

This is a marketing communication. Please refer to the prospectus of the funds and to the key information document before making any investment decision.

The quality of the ranking, award or label obtained by the fund or the management company depends on the quality of the issuing institution and the ranking, award or label does not guarantee the future results of the fund or the management company.

REPORTING 30|04|2024

Candriam Sustainable Bond Global High Yield

Share Class: V (EUR)

MORNINGSTAR RATING OVERALL™: ★★★★★
03.2024

Risk indicator



The summary risk indicator ("SRI") is an indicator with a rating ranging from 1 to 7 and corresponds to increasing levels of risk and return. The methodology for calculating this regulatory indicator is available in the KID. The summary risk indicator ("SRI") is a guide to the level of risk of this product compared to other products. It shows how likely it is that the product will lose money because of movements in the markets or because we are not able to pay you.

- The SRI assumes you keep the product for 3 years.
- The actual risk can vary significantly if you cash in at an early stage and you may get less back.
- This product does not include any protection from future market performance. Please refer to the "Risk" section of the prospectus for more details

SRI Label





Thomas Joret
Senior Fund Manager



Jean-Claude Tamvakis
Senior Fund Manager



Nicolas Jullien
Head of High Yield & Credit
Arbitrage / Deputy Global Head
of Credit

*Years of experience

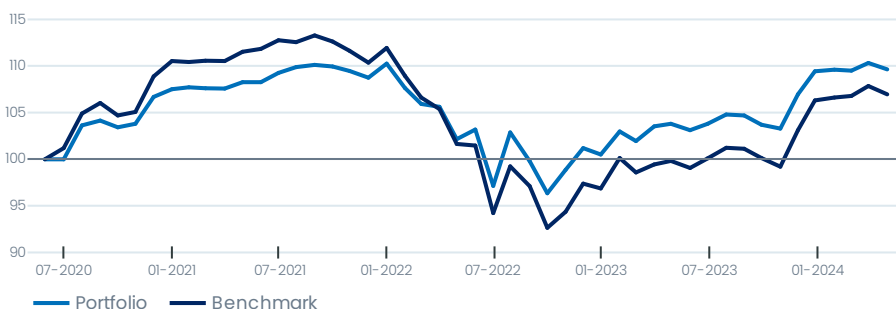
Investment strategy

Candriam Sustainable Bond Global High Yield, a sub-fund of the Candriam Sustainable sicav, offers investors exposure to the Global High Yield corporate bonds market, to benefit from attractive yielding debt of companies with a high credit risk. The fund invests predominantly in bonds or in derivative instruments (credit derivatives based on indices or individual names) issued by companies with a rating exceeding B-/B3 by one of the 3 main ratings agencies. The fund may use currency, volatility, interest rate or credit derivatives for efficient portfolio management purposes (hedge, exposure). This strategy takes into account environmental, social and governance (ESG) criteria via an analysis developed by the Management Company. The fund's sustainable investment objective is to reduce greenhouse gas emissions whilst also seeking to achieve a long term positive impact on social and environmental dimensions. The investment horizon is 3 years. The fund is managed actively, with reference to the index mentioned on the section "characteristics". For further information about this index and its use, please consult the fund's key investor information document (KIID).

Performance

Past Performances does not predict future returns. See important disclosures on performance under the section 'warning' in the 'Important Information' on page 5. NAVs are net of fees and are provided by the accounting department and the reference index by official providers.

	1M	3M	YTD	1Y	3Y	5Y	10Y	SI
Fund	-0.6%	0.0%	0.2%	5.6%	1.3%	-	-	9.6%
Benchmark	-0.8%	0.3%	0.6%	7.1%	-4.1%	-	-	-
	0.2%	-0.3%	-0.4%	-1.5%	5.4%	-	-	-
	2023	2022	2021	2020	3Y annualized	5Y annualized	10Y annualized	SI annualized
Fund	8.9%	-8.8%	2.5%	-	0.4%	-	-	2.4%
Benchmark	9.7%	-13.5%	1.3%	-	-1.4%	-	-	-
	-0.8%	4.6%	1.2%	-	1.8%	-	-	-



This graph represents the synthetic net asset value of the fund. It is provided for information and illustrative purposes only. The synthetic net asset value is obtained by a recalculation of the values of the fund's assets by leveling out the effect of securities transactions (split, coupon, dividend distribution...) in order to reflect the real performance of the fund share or unit. Data may be rounded for convenience. Data expressed in a currency other than that of the investor's country of residence is subject to exchange rate fluctuations, with a positive or negative impact. Gross performance may be impacted by commissions, fees and other expenses.

Fund characteristics

Inception Date	29/05/2020
Fund Domicile	Luxembourg
Fund Legal Form	SICAV
Benchmark	ICE BofA BB-B Global High Yield Non-Financial Constrained Index Hedged EUR (Total Return)
SFDR Category	Article 9
Total net assets (M EUR)	1,331.65
NAV per share cap.(EUR) (C)	1,096.47
Fund Reference Currency	EUR
NAV Calculation	Daily
Morningstar™ Category	EAA Fund Global High Yield Bond - EUR Hedged
ISIN Code (C)	LU1644441807
ISIN Code (D)	LU2501585488
Ticker Bloomberg (C)	CAGHVEA LX Equity
Ticker Bloomberg (D)	ABHYBYD LX Equity
Latest Dividend Distributed	-
Dealing Cut Off	D<12:00
Antidilution Mechanisms	Yes
Custodian Bank	CACEIS Bank, Luxembourg Branch
Management Company	CANDRIAM

Statistics

based on weekly data over 3 years (1 year if too little history)

	Funds	Benchmark
Volatility	5.60%	6.39%
Tracking Error	2.04%	-
Sharpe Ratio	-0.17	-0.43
Number of Issues	91	2,439
Number of Issuers	63	1,274
Modified Duration to Worst	3.34	3.63
Yield to Worst	6.03	7.26
Average Rating	BB	BB-
Average Spread	167.30	254.68
Credit sensitivity	3.59	3.44
Net IG exposure	14.34%	0.77%
Net HY Exposure	78.94%	99.21%

ESG Assessment

Exclusion	Norm based	Positive selection	Integration

Costs*

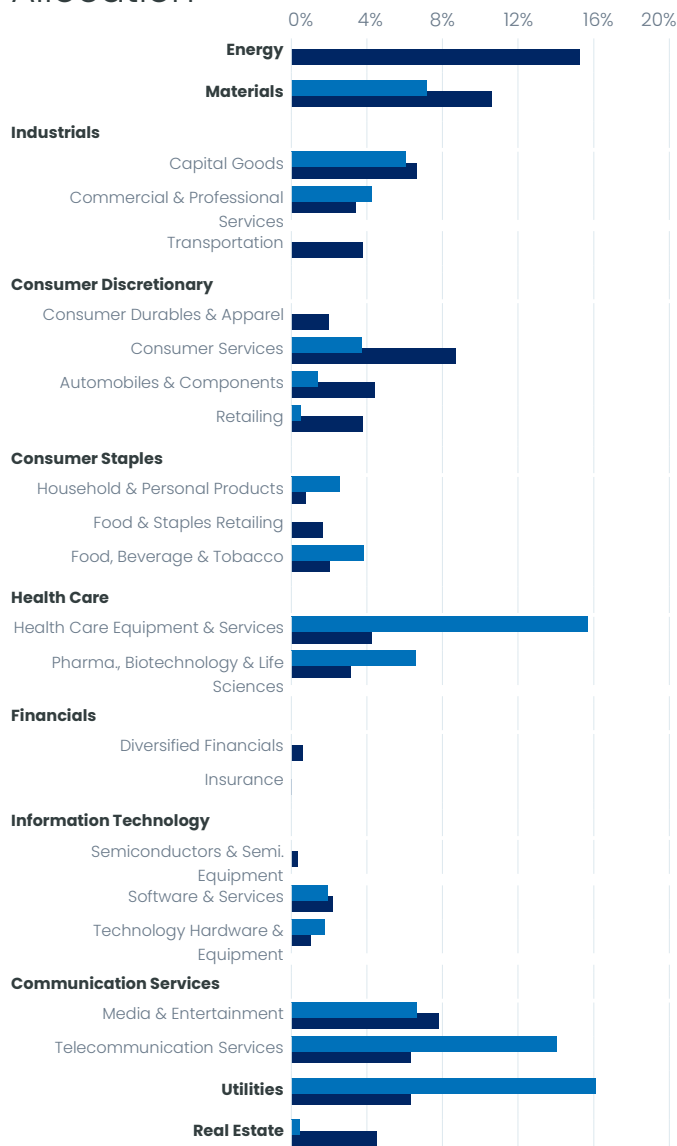
C	0.42%	0.45%	-
D	0.42%	0.45%	
Real Management Fee	Ongoing costs	Performance Fees	

*cfr. the glossary for more information

Top 10 Issuers

		% Fund	Sector	Country	% Active weight
1	TENET HEALTHCARE CORP	3.78	Health Care	United States	+3.00
2	VMED O2 UK LTD	3.66	Communication Services	United Kingdom	+3.29
3	VODAFONE GROUP PLC	3.35	Communication Services	United Kingdom	+2.79
4	NEXTERA ENERGY PARTNERS LP	3.12	Utilities	United States	+3.01
5	UNITED RENTALS INC	2.85	Industrials	United States	+2.41
6	IQVIA HOLDINGS INC	2.76	Health Care	United States	+2.38
7	ENEL SPA	2.70	Utilities	Italy	+2.70
8	TELECOM ITALIA SPA/MILANO	2.48	Communication Services	Italy	+1.91
9	AVANTOR INC	2.23	Health Care	United States	+2.02
10	VEOLIA ENVIRONNEMENT SA	2.22	Utilities	France	+1.99

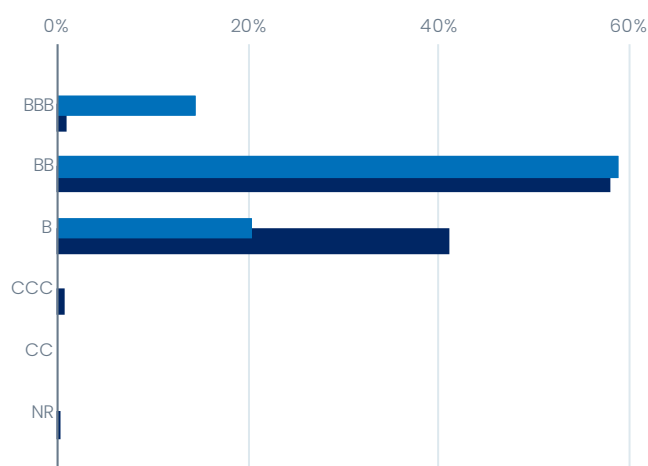
Sector Allocation



Portfolio Composition

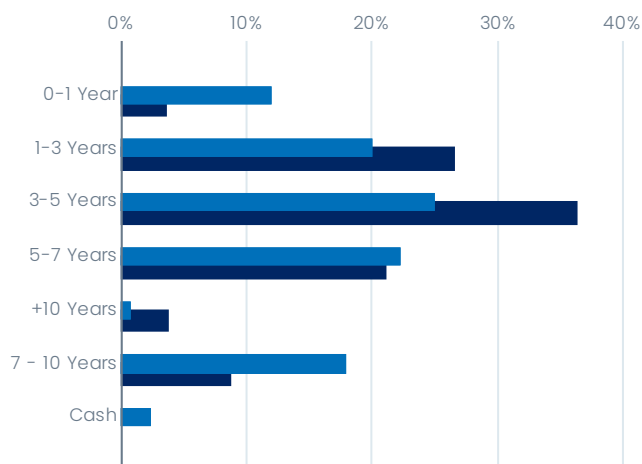
	IG	High Yield
Bonds	14.34%	78.94%
	-	-
	14.34%	78.94%
Total Credit Investment	93.28%	
IR / Govies hedging	-	

Rating Allocation

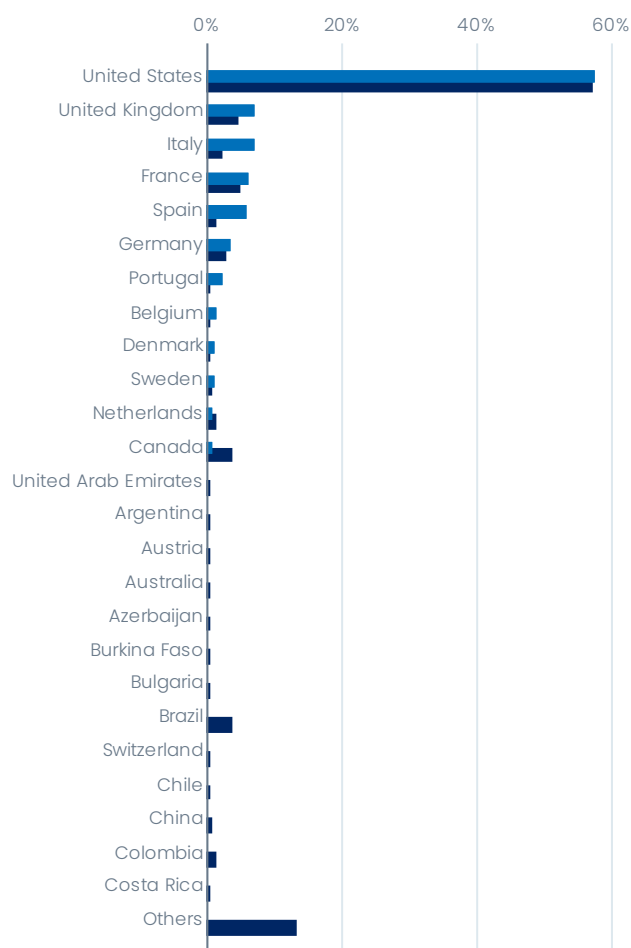


■ Fund
■ Benchmark

Maturity Breakdown

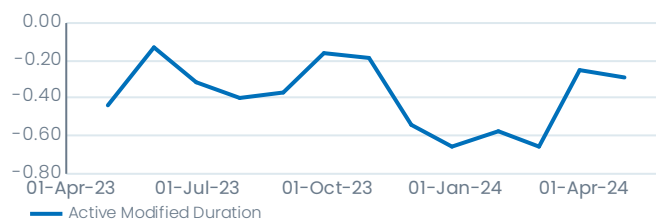


Allocation by Country



 Fund
 Benchmark

Evolution of Active modified duration



Currency Exposure

	Gross Exposure	Net Exposure
EUR	99.65%	99.65%
USD	0.28%	0.28%
GBP	0.07%	0.07%
CHF	0.00%	-0.00%
Others	-	-

SCR

Solvency Capital Requirement

-7.12%		6.00%
SCR Int Rates UP		SCR Int Rates DOWN
-17.94%	-0.22%	-4.37%
SCR Spread	SCR Currency	SCR Concentration
18.57%	19.53%	20.14%
Duration Liability 3Y	Duration Liability 7Y	Duration Liability 10Y
-19.86%		
Market SCR		

Important Information

This is a marketing communication. Please refer to the prospectus of the funds and to the key information document before making any investment decision. This marketing communication does not constitute an offer to buy or sell financial instruments, nor does it represent an investment recommendation or confirm any kind of transaction, except where expressly agreed. Although Candriam selects carefully the data and sources within this document, errors or omissions cannot be excluded a priori. Candriam cannot be held liable for any direct or indirect losses as a result of the use of this document. The intellectual property rights of Candriam must be respected at all times, contents of this document may not be reproduced without prior written approval.

Warning: Past performance of a given financial instrument or index or an investment service or strategy, or simulations of past performance, or forecasts of future performance does not predict future returns. Gross performances may be impacted by commissions, fees and other expenses. Performances expressed in a currency other than that of the investor's country of residence are subject to exchange rate fluctuations, with a negative or positive impact on gains. If the present document refers to a specific tax treatment, such information depends on the individual situation of each investor and may change.

In respect to money market funds, please be aware that an investment in a fund is different from an investment in deposits and that the investment's principal is capable of fluctuation. The fund does not rely on external support for guaranteeing its liquidity or stabilizing its NAV per unit or share. The risk of loss of the principal is borne by the investor.

Candriam consistently recommends investors to consult via our website <https://www.candriam.com> the key information document, prospectus, and all other relevant information prior to investing in one of our funds,

including the net asset value ("NAV") of the funds. Investor rights and complaints procedure, are accessible on Candriam's dedicated regulatory webpages <https://www.candriam.com/en/professional/legal-information/regulatory-information/>. This information is available either in English or in local languages for each country where the fund's marketing is approved.

According to the applicable laws and regulations, Candriam may decide to terminate the arrangements made for the marketing of a relevant fund at any time. Information on sustainability-related aspects: the information on sustainability-related aspects contained in this communication are available on Candriam webpage <https://www.candriam.com/en/professional/sfd/>. The decision to invest in the promoted product should take into account all the characteristics or objectives of the promoted product as described in its prospectus, or in the information documents which are to be disclosed to investors in accordance with the applicable law.

Notice to investors in Switzerland: The information provided herein does not constitute an offer of financial instruments in Switzerland pursuant to the Swiss Financial Services Act ("FinSA") and its implementing ordinance. This is solely an advertisement pursuant to FinSA and its implementing ordinance for financial instruments. Swiss representative: CACEIS (Switzerland) SA, Route de Signy 35, CH-1260 Nyon. The legal documents as well as the latest annual and semi-annual financial reports, if any, of the investment funds may be obtained free of charge from the Swiss representative. Swiss paying agent: CACEIS Bank, Paris, succursale de Nyon/Suisse, Route de Signy, 35, CH-1260 Nyon. Place of performance: Route de Signy 35, CH-1260 Nyon. Place of jurisdiction: Route de Signy 35, CH-1260 Nyon.

Specific information for investors in France: the appointed representative and paying agent in France is CACEIS Bank, Luxembourg Branch, sis 1-3, place

Valhubert, 75013 Paris, France. The prospectus, the key information document, the articles of association or as applicable the management rules as well as the annual and semi-annual reports, each in paper form, are made available free of charge at the representative and paying agent in France.

Specific information for investors in Spain: Candriam Luxembourg Sucursal en España has its registered office at C/ Pedro Teixeira, 8, Edif. Iberia Mart I, planta 4, 28020 Madrid and is registered with the Comisión Nacional del Mercado de Valores (CNMV) as an European Economic Area management company with a branch.

Specific information for investors in Austria: The appointed Paying and Information Agent in Austria is Erste Bank der oesterreichischen Sparkassen AG, Am Belvedere 1, 1100 Vienna, Austria. The prospectus, the Key Information Document (KID) relating to the portfolios of the Fund, the Articles, the audited annual accounts, the semi-annual accounts as well as the issuance and redemption prices are available in Austria free of charge (in the German language) at the Austrian Paying and Information Agent.



© 2022 Morningstar. All Rights Reserved. The information contained here: (1) is proprietary to Morningstar and/or its content providers; (2) may not be copied or distributed; and (3) is not warranted to be accurate, complete or timely. Neither Morningstar nor its content providers are responsible for any damages or losses arising from any use of this information. Past performance is no guarantee of future results. For more detailed information about the Morningstar Rating, including its methodology, please go to: https://s21.q4cdn.com/198919461/files/doc_downloads/othe_disclosure_materials/MorningstarRatingforFunds.pdf

Glossary

EXPOSURE

The Exposure of a fund is expressed as a percentage of total portfolio holdings, taking into account the leverage of derivative instruments. It represents the amount an investor can lose from the risks unique to a particular investment.

NET HY EXPOSURE

The Net High Yield Exposure is the percentage difference between a fund's long and short exposures to high yield fixed income instruments, including derivatives. An instrument is considered as a high yield instrument if its credit rating is below BBB-.

NET IG EXPOSURE

The Net Investment Grade Exposure is the percentage difference between a fund's long and short exposures to investment grade fixed income instruments, including derivatives. An instrument is considered as an investment grade instrument if its credit rating is above or equal to BBB-.

VOLATILITY*

The Volatility is the statistical measure of dispersion of returns for a fund around the mean. A higher volatility means that a fund's value can potentially be spread out over a larger range of values and makes the fund a riskier investment.

THE SUMMARY RISK INDICATOR

The summary risk indicator ("SRI") is an indicator with a rating ranging from 1 to 7 and corresponds to increasing levels of risk and return. The methodology for calculating this regulatory indicator is available in the KID. The summary risk indicator ("SRI") is a guide to the level of risk of this product compared to other products. It shows how likely it is that the product will lose money because of movements in the markets or because we are not able to pay you.

TRACKING ERROR*

The Tracking Error is a statistical measure of dispersion of the excess returns of the fund around the mean, making it the volatility of the difference between the fund's return and its reference index return. A higher tracking error indicates a higher deviation from the reference index.

SHARPE RATIO*

The Sharpe Ratio measures the level of compensation an investment in the fund offered for the risk taken. It is calculated by subtracting the risk-free rate from the return of the fund and dividing that result by the volatility. The higher the Sharpe ratio the better, a negative ratio has no significance other than that the fund underperformed the risk-free rate.

* based on weekly data over 3 Years (1 year if too little history)

RISK-FREE RATE

The Risk-Free Rate is the market return on an asset that is considered to have no (or negligible) risk. It will be used for the calculation of risk adjusted returns (e.g. Sharpe Ratio) and it will always be a rate in the performance calculation currency. The most common used rates will be ESTER for EUR denominated performances and FED Fund Rate for USD denominated performances.

AVERAGE RATING

The Average Rating is calculated using the Weighted Average Rating Factor (WARF) and is a measure to indicate the credit quality of the fund. The measure aggregates the credit ratings of the fund's holdings into a single rating.

MODIFIED DURATION TO WORST

The Modified Duration is a formula that expresses the measurable change in the value of a fixed income instrument in response to a change in interest rates. The Modified Duration to Worst is calculated taking into account the call date for callable bonds and the scenario that would provide the worst yield to the holders of fixed income instruments. The Modified Duration to Worst for the fund is calculated as the weighted average MDTW of all underlying fixed income instruments.

YIELD TO WORST

The Yield To Worst (YTW) is the lowest potential yield that can be received on all fixed income instruments in a fund without the issuers actually defaulting. It represents the lowest of all yields computed at each call date for callable bonds. The YTW for the fund is calculated as the weighted average YTW of all underlying fixed income instruments.

CREDIT SENSITIVITY

The Credit Sensitivity is a formula that expresses the measurable change in the value of a fixed income instrument in response to a change in credit spread. The credit sensitivity for the fund is calculated as the weighted average credit sensitivity of all underlying fixed income instruments.

AVERAGE SPREAD

The Average Spread for the fund is the weighted average Option-Adjusted Spread (OAS) for all underlying fixed income instruments. The OAS refers to the difference or spread between the fixed income instrument's yield and the swap rate with the same maturity, using a dynamic pricing model that accounts for embedded options.

NUMBER OF ISSUERS

The Number of Issuers represents the total number of companies in position.

RATING

A (credit) Rating is a quantified assessment of the creditworthiness of a borrower. Rating in this report refer to the 2nd best rating, a daily calculated, standardized rating. It is calculated on instrument level, using ratings from 3 worldwide renowned rating agencies. It is the 2nd best rating, unless no more than one rating from one agency exists. NR indicated that none of the rating agencies issued a rating on the instrument.

NUMBER OF ISSUES

The Number of Issues represents the total number of instruments in position.

REAL MANAGEMENT FEES

The Real Management Fee is the actual percentage charge deducted from the fund's average net assets.

OCG

Ongoing charges represent all operating and management costs invoiced to the UCI net of retrocessions.

PERFORMANCE FEE

The Performance Fee refers to a charge on any returns that the Fund achieves above the reference index. Please refer to the Prospectus for further information.

ESG ASSESSMENT – EXCLUSION

The Exclusion filter refers to the exclusion of companies involved in harmful or controversial activities. Involvement is assessed using activity-specific revenue-based threshold levels.

ESG ASSESSMENT – NORMS-BASED

The Norms-Based analysis excludes companies which are in violation of the 10 principles of the United Nations Global Compact (UNGC). These principles cover 4 main categories: Human Rights, Labour Rights, Environment and Anti-Corruption.

ESG ASSESSMENT – POSITIVE SELECTION

The Positive selection analysis is inclusive, not exclusive. It includes only the companies with the best ESG score, obtained by evaluating their ability to manage the sustainable development issues based on a combination of specific factors material to each sector.

ESG ASSESSMENT – INTEGRATION

The Integration of ESG factors into investment decisions consists of integrating specific extra-financial factors into the financial valuation or credit assessment of securities. The factors used are selected based on their materiality in the given asset class.

Sustainability Reporting

The following pages provide metrics and indicators related to the sustainability impact of corporate instruments (i.e. equities, corporate bonds etc.).

The Fund is classified as an article 9 financial product according to the Sustainable Finance Disclosure Regulation. The sustainable investment objective of the Fund is two-fold:

- The Fund aims to contribute to the reduction of greenhouse gas emissions in order to fulfil the long-term objectives of the Paris Agreement.
- Moreover, not focusing on specific themes, the Fund aims to have long-term positive impacts on the environment, beyond the issue of climate change, and on social domains.

The Fund aims to achieve these objective through a combination of positive selection of issuers based on sustainability considerations, exclusions, impact measurement and active ownership.

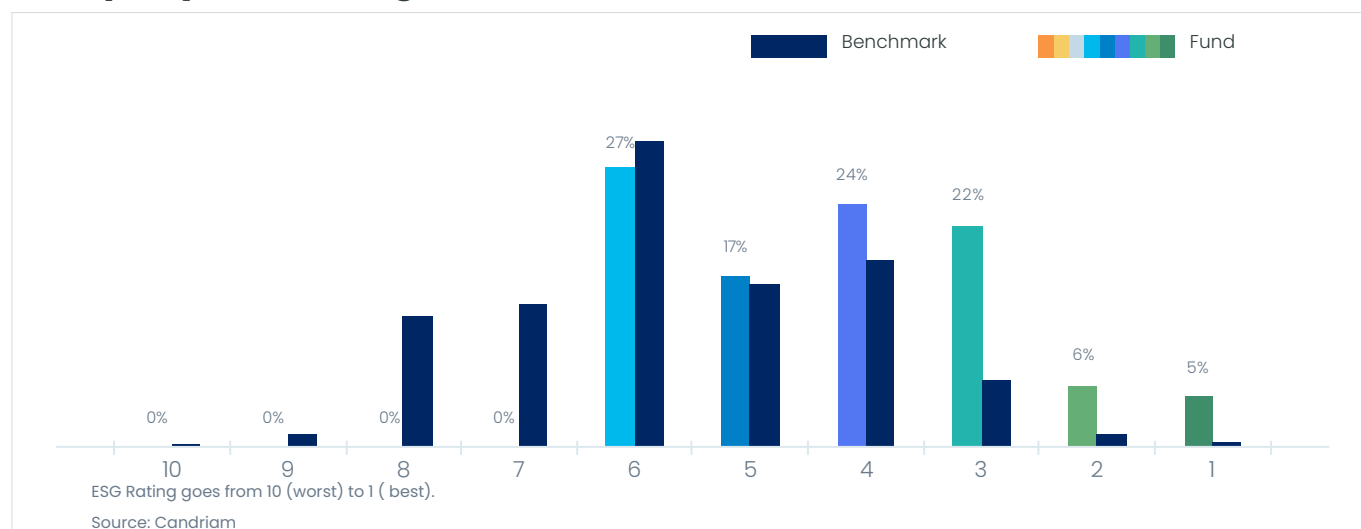
For more information on our sustainable investments, the methodology and relevant sustainability indicators used to measure the impact of such investments, refer to our website: [//www.candriam.com/en/professional/market-insights/sfdr](http://www.candriam.com/en/professional/market-insights/sfdr).

Overall sustainability score

The sustainability score (also called 'ESG score') is based on Candriam's proprietary ESG analysis and scoring methodology. For companies, Candriam's proprietary ESG analysis is done from two distinct but related angles: analysis of the impacts of business activities (products and services) and management of companies' key stakeholders.



Company ESG Rating



Company Sustainability Indicators



Carbon footprint



The difference in carbon footprint is equivalent to



94 Round Trips
Brussels – New York



Emissions produced by
114 cars annually

Tons CO₂eq per million € invested in fund/benchmark

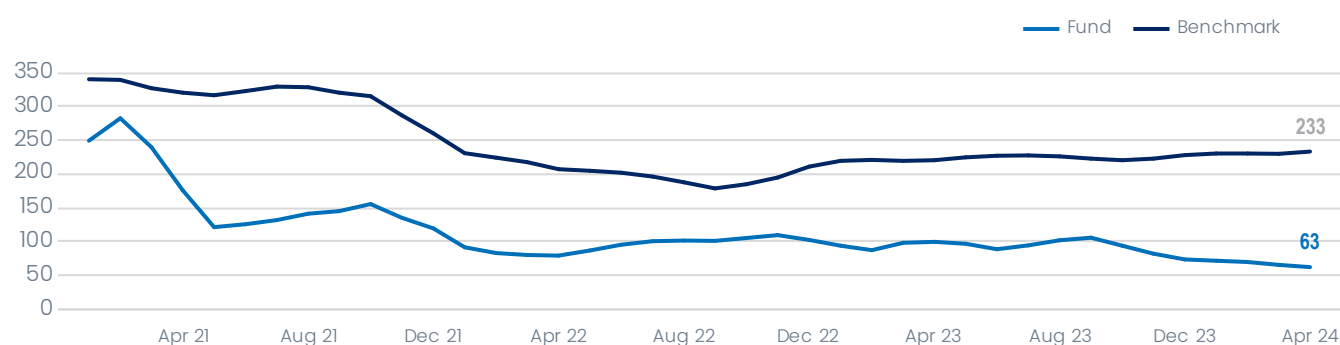
Source: Candriam, Trucost

Coverage Rate (Fund/Benchmark): 94.3% / 74.6%



Evolution carbon footprint

Tons CO₂eq per million € invested (3 months moving average)

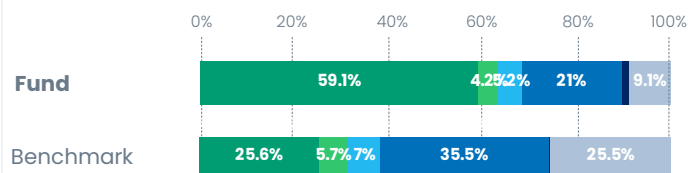


Source: Candriam, Trucost



Power generation mix

The power generation mix of a portfolio shows the percentages that different energy sources represent within electric power generating companies held in the portfolio.



Source: Candriam, Trucost

Renewables

Others

Nuclear

Natural Gas

Oil

Coal

Exposure of electric power generation companies

Fund 15.3%

Benchmark 5.1%

Total power generation from
renewables
134,191 MWH



Equivalent annual power
consumption of
17,427 PEOPLE

Environmental indicators



Green exposure

(by MSCI ESG Research)

Fund 9.66%

Benchmark 3.89%

Source: Candriam, MSCI

Coverage Rate (Fund/Benchmark): 93.8% / 82.2%



Fossil Fuel exposure

(by MSCI ESG Research)

Fund 6.29%

Benchmark 14.05%

Source: Candriam, MSCI

Coverage Rate (Fund/Benchmark): 92.4% / 79.0%

% Green bonds

Fund

16%

Source: Bloomberg

Board Gender Diversity



Source: Candriam, ISS-Oekom
Coverage Rate (Fund/Benchmark): 78.9% / 62.0%

Percentage of Independent board members



Source: Candriam, ISS-Oekom
Coverage Rate (Fund/Benchmark): 78.9% / 62.0%

Sustainable Development Goals

The Sustainable Development Goals (SDGs) are a collection of 17 global goals set by the United Nations General Assembly in 2015, and to be achieved by year 2030. A score is calculated with respect to each SDG of investee companies held in portfolio. Each score is a weighted average of the level of contribution to such SDG by such companies.

In order to estimate this contribution, the scores consider three dimensions:

- Contribution of the companies' products and services to achieving each goal
- Impact of the companies' operations on relevant ESG dimensions (e.g. human capital management, environmental impact, supply chain management)
- Exposure of the companies to controversies detrimental to attaining the Sustainable Development Goals

The fund and the benchmark are rated from -10 to +10 on each SDG, reflecting their degree of positive or negative contribution to each goal.

Fund (%)

9 45

Benchmark (%)

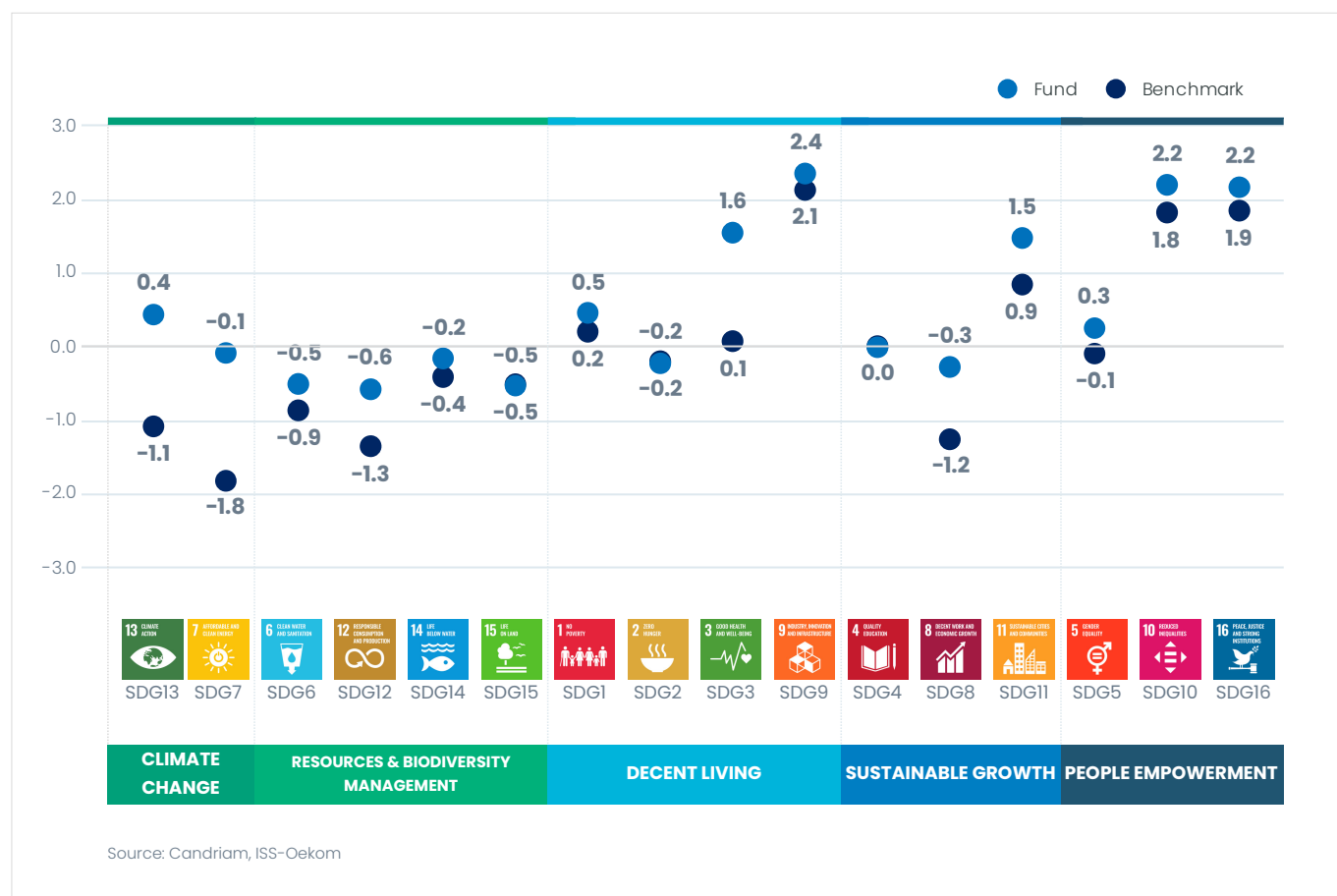
2 34

● Significant positive impact (5.1 to 10)

● Some positive impact (0.2 to 5)

Source: Candriam

Coverage Rate (Fund/Benchmark): 93.6% / 72.7%



Summary ESG Data

Indicator (Source)	Metric	Benchmark	Fund	Coverage rate (% rate/% eligible assets)	Fund weight concerned (% rated/total assets)
Carbon footprint ¹	Tons CO2eq/million € invested	238	61	94.3%	72.4%
Carbon intensity ¹	Tons CO2eq/million € revenues	326	117	90.6%	72.4%
Weighted Average Carbon Intensity ¹	Tons CO2eq/million € revenues	326	114	90.6%	72.4%
Green exposure ²	Percentage green exposure	4	10	93.8%	87.5%
Fossil Fuel exposure ²	Percentage fossil fuel exposure	14	6	92.4%	71.0%
Renewable energy production ¹	Total Mwatt/h	24759	134191	15.3%	14.3%
Water consumption ¹	M3 water/million € invested	14835.49	3341.55	89.3%	83.3%
Water intensity ¹	M3 water/million € revenues	20420	6476	89.3%	83.3%
Weighted Average Water Intensity (WAWI) ¹	M3 water/million € revenues	13480	7236	90.6%	83.3%
Board gender diversity ³	Percentage gender diversity board members	31%	36%	78.9%	73.6%
Board independence ³	Percentage independent Board members	74%	75%	78.9%	73.6%
Biodiversity programmes ⁴	Score from 0 to 100 (100 is best)	66.27	94.94	15.1%	14.1%
Employee fatality rate ⁴	Score from 0 to 100 (100 is best)	56.68	48.84	38.4%	35.8%
Collective bargaining agreements ⁴	Score from 0 to 100 (100 is best)	41.21	46.09	62.6%	58.4%
Bribery & corruption policy ⁴	Score from 0 to 100 (100 is best)	61.90	70.93	73.9%	68.9%
Money laundering policy ⁴	Score from 0 to 100 (100 is best)	44.75	0.00	0.0%	0.0%

Sources: 1) Candriam, Trucost 2) Candriam, MSCI 3) Candriam, ISS-Oekom 4) Candriam, Sustainalytics

Norms-based analysis / controversial activities

Candriam's Norms-Based Analysis excludes companies which are in violation of the ten principles of the United Nations Global Compact.



Candriam controversial activities analysis excludes companies involved in harmful or controversial activities. The details of Candriam's controversial activity are available on the Management Company's website via the link:

<https://www.candriam.com/en/professional/Market-insights/sri-publications>

Glossary

COMPANY CARBON FOOTPRINT METRICS

Refer to the measurement of greenhouse gas (GHG) emissions of an investment portfolio by summing the proportional GHG emissions of the underlying holdings, proportional to the share of ownership.

tCO₂-eq: Carbon dioxide (CO₂) is the most common GHG emitted by human activities, in terms of the quantity released and the total impact on global warming. As a result, the term 'CO₂' is sometimes used as a shorthand expression for all greenhouse gases. A portfolio's carbon footprint is measured in tonnes of carbon dioxide equivalent (tCO₂-eq) which allows to bundle various greenhouse gas emissions in a single number. For any quantity and type of greenhouse gas, CO₂-eq signifies the amount of CO₂ which would have the equivalent global warming impact.

Scope 1, 2 and 3: The international GHG Protocol classifies a company's GHG emissions into three 'scopes':

- Scope 1 emissions: Direct emissions from owned or controlled sources.
- Scope 2 emissions: Indirect emissions from the generation of purchased energy.
- Scope 3 emissions: All indirect emissions (not included in scope 2) that occur in the value chain of the reporting company, including both upstream and downstream emissions.

All Carbon Footprint Metrics analysed in this report are based on both Scope 1 and Scope 2 data sourced from specialist data provider Trucost.

Good quality Scope 3 data currently do not exist because of the complexity to measure and control upstream and downstream value chain data. That also entails that so-called 'avoided emissions' are excluded from Carbon Footprinting analytics.

One can distinguish between four Carbon Footprint Metrics:

(1) Total Carbon Emissions: Measure the total GHG emissions of a portfolio in the most literal sense by summing all GHG emissions of the underlying holdings, proportional to the share of ownership. The dependence of this measure on a portfolio's size makes this metric of limited usefulness for benchmarking and comparison purposes.

(2) (Normalized) Carbon footprint: Measure the asset-weighted carbon emissions of a portfolio normalized per million \$ invested (expressed in tCO₂-eq / million \$ invested).

(3) (Normalized) Carbon Intensity: Measures the asset-weighted carbon emissions of a portfolio normalized per million \$ of revenue (expressed in tCO₂-eq / million \$ revenues). This metric provides an indication of the amount of GHG emitted by the holdings in a portfolio to generate 1 million \$ of revenue.

(4) Weighted Average Carbon Intensity (WACI): The sum product of the portfolio's holdings' weights and carbon intensities, where holdings' carbon and carbon intensities, where holdings' carbon intensities are calculated as the company's total carbon emissions divided by the company's total revenues.

EQUIVALENT CO₂ EMISSIONS

'Equivalent CO₂ emissions' information aims to provide investors with examples of human activities generating CO₂ emissions that are equivalent to the CO₂ emissions of the companies held in the fund and the benchmark for €1 million invested. Real-life examples illustrate of how much less or more CO₂ is emitted by the companies held by the fund compared to its benchmark. For commercial flights, this information is expressed as the number of round-trip flights from Brussels to New York in economy class. For family cars, it is expressed as the number of cars driving 13 000 km per year and emitting 120g of CO₂ per km on average (Source: Eurostat).

CARBON FOOTPRINT EVOLUTION

Provides a graphical representation of historical carbon footprints of the portfolio, based on monthly calculations of 3-months moving averages of greenhouse gas emission (Tons CO₂eq per million € invested).

COMPANY ESG RATING

Based on Candriam's proprietary ESG Analytical Framework, each issuer receives an ESG Rating, from ESG 1 (best) to ESG 10 (worst). The ESG Rating is the result of our Business Activity Analysis and Stakeholder Analysis. It expresses each issuer's absolute ESG performance, including sustainability-related risks, opportunities and impacts.

RENEWABLE ENERGY PRODUCTION

Measures the absolute level (i.e. not asset-weighted) of renewable energy production within the Fund, expressed in MWh.

GREEN EXPOSURE

Asset-weighted percentage of revenues generated from green goods and services, such as alternative energy, energy efficiency, green buildings, pollution prevention and sustainable water. The data is sourced from MSCI ESG research.

FOSSIL FUEL EXPOSURE

Asset-weighted percentage of revenues generated from thermal coal extraction, unconventional and conventional oil and gas extraction, oil refining, thermal coal-based power generation, liquid fuel-based power generation and natural gas power generation. The data is sourced from MSCI ESG research.

GREEN BONDS

The percentage of green bonds held by the fund. This calculation is based on the identification of green bond securities sourced from Bloomberg.

BOARD GENDER DIVERSITY

Average ratio of female-to-male board members in investee companies.

BOARD INDEPENDENCE

Asset-weighted percentage of independent board members at the companies held in the portfolio.

BIODIVERSITY PROGRAMMES

Provides an assessment of the quality of biodiversity protection programmes within the underlying companies of a portfolio.

EMPLOYEE FATALITY RATE

Provides an assessment of the fatality rates in the underlying companies of the portfolio over the last three years.

COLLECTIVE BARGAINING AGREEMENTS

Provides an assessment of the extent to which the employees of the companies held in the portfolio are covered by collective bargaining agreements.

BRIBERY CORRUPTION POLICY

Provides an assessment of the quality of anti-bribery and corruption policies within the underlying companies of the portfolio.

MONEY LAUNDERING POLICY

Provides an assessment of the quality of anti-money laundering policies within the underlying companies of the portfolio.

WATER CONSUMPTION

Measures the asset-weighted water consumption of a portfolio normalized per million \$ invested (expressed in cubic meters water / million \$ invested). Data are sourced from "Trucost" and do not include the supply of drinkable water and the wastewater that enters a company's facility to be treated.

WATER INTENSITY (M3/MIO USD REVENUES)

Measures the asset-weighted water consumption of a portfolio normalized per million \$ of revenue (expressed in cubic meters water / million \$ revenues). This metric provides an indication of the amount of water consumed by the companies in the portfolio to generate 1 million \$ of revenue. Data are sourced from "Trucost" and do not include the supply of drinkable water and the wastewater that enter a company's facility to be treated.

WEIGHTED AVERAGE WATER INTENSITY (WAWI)

The sum product of the portfolio's holdings' weights and water intensities, where holdings' water intensities are calculated as a company's total water consumption divided by the company's total revenues.

NORMS-BASED ANALYSIS

Candriam's Norms-Based Analysis excludes companies which are in violation of the ten principals of the United Nations Global Compact.

CONTROVERSIAL ACTIVITIES ANALYSIS

Candriam's Controversial Activities Analysis excludes companies involved in harmful or controversial activities. Involvement is assessed using activity-specific revenue-based threshold levels.

COVERAGE RATE (FUND/INDEX)

Indicates the percentage of holdings within the Fund or within the Benchmark for which the relevant ESG data is available and analysed.

Important Disclosures

Important information in relation to the extra-financial part of this reporting:

MSCI ESG Research LLC's ("MSCI ESG") Fund Metrics products (the "Information") provide environmental, social and governance data with respect to underlying securities within more than 23,000 multi-asset class Mutual Funds and ETFs globally. MSCI ESG is a Registered Investment Adviser under the Investment Advisers Act of 1940. MSCI ESG materials have not been submitted to, nor received approval from, the US SEC or any other regulatory body. None of the Information constitutes an offer to buy or sell, or a promotion or recommendation of, any security, financial instrument or product or trading strategy, nor should it be taken as an indication or guarantee of any future performance, analysis, forecast or prediction. None of the Information can be used to determine which securities to buy or sell or when to buy or sell them. The Information is provided "as is" and the user of the Information assumes the entire risk of any use it may make or permit to be made of the Information.

© S&P Trucost Limited ("Trucost"), an affiliate of S&P Dow Jones Indices LLC. All rights reserved.

© 2023 | Institutional Shareholder Services and/or its Affiliates. This document contains information that is the property of Institutional Shareholder Services Inc. ("ISS") or its subsidiaries. The Information may not be reproduced or redisseminated in whole or in part without prior written permission of ISS. ISS MAKES NO EXPRESS OR IMPLIED WARRANTIES OR REPRESENTATIONS WITH RESPECT TO THE INFORMATION.

© 2023 Sustainalytics. All Rights Reserved. The information, data, analyses and opinions contained here: (1) includes the proprietary information of Sustainalytics; (2) may not be copied or redistributed except as specifically authorized; (3) do not constitute investment advice nor an endorsement of any product or project; (4) are provided solely for informational purposes; and (5) are not warranted to be complete, accurate or timely. Sustainalytics is not responsible for any trading decisions, damages or other losses related to it or its use. The use of the data is subject to conditions available at <https://www.sustainalytics.com/legal-disclaimers>.

ESG investment risk

The extra financial objectives presented in this document are based on the realization of assumptions made by Candriam.

Implementing Candriam's ESG rating models does require access to various quantitative as well as qualitative data, depending on the sector and the exact activities of a given company. In some areas, such as board composition and background of the directors, data is usually available and subject to quality and accuracy checks by company auditors or regulators. In many other areas however, our ESG analysts cannot rely on the same degree of systematic availability and data reliability. Yet, the quality of the data is of the essence of the assessment of a company. These limitations do affect Candriam's ESG ratings.



This label/rating is valid for a limited term and is subject to reevaluation. Obtaining this label by the fund does not mean that it meets your own sustainability objectives, nor that the label meets the requirements of future national or European rules. For more information on this subject, see the website <https://www.lelabelisr.fr/>. The quality of the ranking, award or label obtained by the fund or the management company depends on the quality of the issuing institution and the ranking, award or label does not guarantee the future results of the fund or the management company.



© 2023 Central Labeling Agency (CLA): see <https://www.towardssustainability.be>. This fund has received the sustainability label Towards Sustainability. Reassessed each year, the label is a quality standard overseen by the Central Labelling Agency of the Belgian SRI Label (CLA). To meet this standard, financial products must meet a number of minimum sustainability requirements, both at the portfolio level and in the investment process. You will find more information about the label on the website <https://towardssustainability.be/the-label/quality-standard>. Obtaining this label by the fund does not mean that it meets your own sustainability objectives or that the label meets the requirements of future national or European rules. For more information on this subject, see the website <https://www.fsma.be/en/sustainable-finance>. The quality of the ranking, award or label obtained by the fund or the management company depends on the quality of the issuing institution and the ranking, award or label does not guarantee the future results of the fund or the management company.