

RobecoSAM Sustainable Healthy Living Equities I EUR

RobecoSAM Sustainable Healthy Living Equities is an actively managed fund that invests globally in companies that promote good health and well-being and contribute to an efficient healthcare system. The selection of these stocks is based on fundamental analysis. The fund has sustainable investment as its objective, within the meaning of Article 9 of the Regulation (EU) 2019/2088 of 27 November 2019 on Sustainability-related disclosures in the financial sector. The strategy integrates sustainability criteria as part of the stock selection process and through a theme-specific sustainability assessment. The portfolio is built on the basis of an eligible investment universe that includes companies whose business models contribute to the thematic investment objectives. The assessment regarding relevant SDGs uses an internally developed framework, more information on which can be obtained at www.robeco.com/si. The fund also aims to achieve a better return than the index.



David Kägi PhD
Fund manager since 01-03-2020

Performance

	Fund	Index
1 m	4.48%	3.42%
3 m	8.36%	11.37%
Ytd	8.36%	11.37%
1 Year	12.09%	25.86%
2 Years	2.10%	9.47%
3 Years	3.50%	11.71%
5 Years	5.90%	12.95%
10 Years	7.78%	12.09%
Since 04-2007	6.98%	8.32%

Annualized (for periods longer than one year)

Note: due to a difference in measurement period between the fund and the index, performance differences may arise. For further info, see last page.

Calendar year performance

	Fund	Index
2023	4.91%	19.60%
2022	-14.94%	-12.78%
2021	23.32%	31.07%
2020	-0.13%	6.33%
2019	27.99%	30.02%
2021-2023	3.24%	10.99%
2019-2023	7.06%	13.58%

Annualized (years)

Index

MSCI World Index TRN

General facts

Morningstar	★★★
Type of fund	Equities
Currency	EUR
Total size of fund	EUR 337,957,814
Size of share class	EUR 126,474,989
Outstanding shares	404,240
1st quotation date	29-10-2020
Close financial year	31-12
Ongoing charges	0.93%
Daily tradable	Yes
Dividend paid	No
Ex-ante tracking error limit	-
Management company	Robeco Institutional Asset Management B.V.

Sustainability profile

- Exclusions+
- ESG Integration
- Voting
- Target Universe

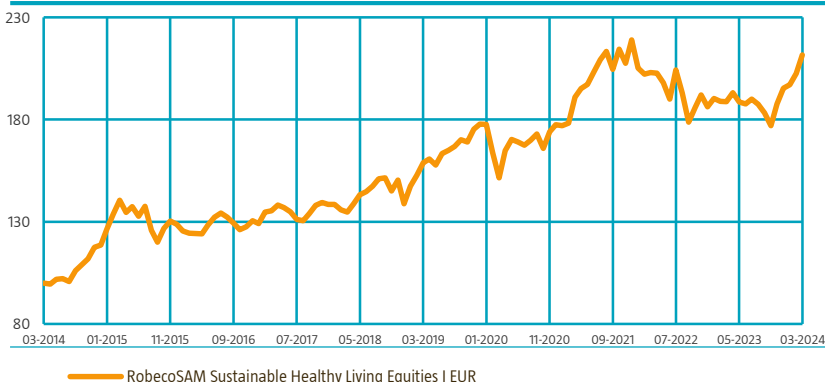


For more information on exclusions see <https://www.robeco.com/exclusions/>

For more information on target universe methodology see <https://www.robeco.com/si>

Performance

Indexed value (until 31-03-2024) - Source: Robeco



Performance

Based on transaction prices, the fund's return was 4.48%.

In the first quarter of 2024, the Sustainable Healthy Living fund performed above both its broad benchmark and its investible universe. All clusters performed positively, with the Therapeutics cluster leading, followed by Healthy Lifestyles, Healthy Nutrition and Healthcare Efficiency. On an individual stock level, the biggest positive contribution came from Lonza. The share price of the manufacturer of active biotech compounds bounced back from the lows after the company announced decent results and new leadership. These announcements prompted investors to focus again on the opportunities in the structural trend to outsource biotech manufacturing. The largest negative contribution came from Grifols. Shares of the supplier of blood plasma products again came under pressure after some confusing communications about its outlook in an analyst call. This reignited concerns, which had been raised in an earlier short seller report.

Market development

Slowing inflation, solid economic growth, low unemployment, fiscal support from the IRA program and rate cuts likely to start around mid-year support a soft landing scenario for the US economy. In the EU, low-level stabilization is probably going to continue until consumer demand – driven by both higher wages and still low unemployment – may bring some growth later in the year. These factors alleviate fears of a pronounced recession in 2024, which would have implied a strong slowdown of consumer demand. However, a string of weak results reported by JD Sports, Nike and Puma in December and January have reset expectations in the sportswear space for the next few months. For the healthcare sector, the normalizations in doctor's offices and hospitals had a positive impact, mainly on medtech companies, which broadly benefited from the solid demand for medical devices. For managed care companies running healthcare insurance plans, higher medical use translates into higher costs, which weighed on profit expectations for these companies. The energy, materials and industrials sectors outperformed the broad global markets, while consumer staples healthcare, IT and materials lagged.

Expectation of fund manager

The risks to economic growth have increased due to inflation, rate increases by central banks, geopolitical tensions and the economic imbalances in China. With consumers feeling the impact of inflation, buying patterns have become more cautious. It will therefore be even more important to focus on solid business fundamentals, pricing power and quality. We remain constructive on the mid to long-term potential of the equity markets and are making use of current market conditions to further solidify our positions in companies that have very strong long-term business prospects. The pandemic has accelerated changes necessary to build more robust and sustainable economies. It has also made individuals more inclined to adopt a healthier lifestyle. The Healthy Living portfolio of sustainable companies is well positioned to benefit from these changes in the longer run.

Top 10 largest positions

Lonza – contract manufacturer for the biopharmaceutical industry specialized in biotech active compounds; Boston Scientific – innovative producer of a broad portfolio of medical devices; Siemens Healthineers – leading medical equipment and hospital diagnostics company; Bakkafrøst – producer of cultured salmon located on the Faroe Islands; L'Occitane – manufactures and distributes natural personal care products globally through a portfolio of brands; Thermo Fisher Scientific – leading provider of analytical equipment; Alcon – leading eye care company; Novo Nordisk – innovative pharmaceutical company with a major market share in diabetes; UnitedHealth – leading US health insurer and pharmacy benefits manager; Nomad Foods – Leading producer in the frozen food category

Top 10 largest positions

Holdings

Lonza Group AG
Boston Scientific Corp
Siemens Healthineers AG
Bakkafrøst P/F
L'Occitane International SA
Thermo Fisher Scientific Inc
Alcon Inc
Novo Nordisk A/S
UnitedHealth Group Inc
Nomad Foods Ltd
Total

Sector	%
Life Sciences Tools & Services	4.59
Health Care Equipment & Supplies	4.52
Health Care Equipment & Supplies	4.49
Food Products	4.02
Personal Products	3.53
Life Sciences Tools & Services	3.48
Health Care Equipment & Supplies	3.44
Pharmaceuticals	3.32
Health Care Providers & Services	3.17
Food Products	3.14
Total	37.69

Fund price

31-03-24	EUR	314.87
High Ytd (28-03-24)	EUR	314.87
Low Ytd (17-01-24)	EUR	284.17

Top 10/20/30 weights

TOP 10	37.69%
TOP 20	66.33%
TOP 30	89.54%

Fees

Management fee	0.80%
Performance fee	None
Service fee	0.12%

Statistics

	3 Years	5 Years
Tracking error ex-post (%)	7.25	7.59
Information ratio	-1.00	-0.79
Sharpe ratio	0.25	0.50
Alpha (%)	-4.40	-2.28
Beta	0.78	0.72
Standard deviation	12.67	12.78
Max. monthly gain (%)	7.61	8.88
Max. monthly loss (%)	-7.32	-7.77

Above mentioned ratios are based on gross of fees returns.

Legal status

Investment company with variable capital incorporated under Luxembourg law (SICAV)
Issue structure Open-end
UCITS V Yes
Share class I EUR
This fund is a subfund of Robeco Capital Growth Funds, SICAV.

Hit ratio

	3 Years	5 Years
Months outperformance	13	22
Hit ratio (%)	36.1	36.7
Months Bull market	22	38
Months outperformance Bull	8	12
Hit ratio Bull (%)	36.4	31.6
Months Bear market	14	22
Months Outperformance Bear	5	10
Hit ratio Bear (%)	35.7	45.5

Above mentioned ratios are based on gross of fees returns.

Registered in

Austria, Belgium, Finland, France, Germany, Ireland, Italy, Liechtenstein, Netherlands, Singapore, Spain, Sweden, Switzerland, United Kingdom

Currency policy

The fund is allowed to pursue an active currency policy to generate extra returns and can engage in currency hedging transactions.

Risk management

Risk management is fully integrated into the investment process to ensure that positions always meet predefined guidelines.

Dividend policy

In principle the fund does not intend to distribute dividend and so both the income earned by the fund and its overall performance are reflected in its share price.

Fund codes

ISIN	LU2146190165
Bloomberg	RSSHIE LX
WKN	A2QBUP
Valoren	55753617

Changes

This share class shows performance information prior to its launch date. On the launch date of this share class, the fund absorbed Multipartner SICAV - RobecoSAM Sustainable Healthy Living Fund. Performance prior to the launch date has been simulated on the basis of the past performance of the absorbed fund that had similar investment policy and applied higher or comparable charges.

Asset Allocation

Asset allocation		
Equity		97.6%
Cash		2.4%

Sector allocation

The fund invests in companies benefiting from structural growth aligned with the Healthy Living trend. The strategy aims to capture investment opportunities linked to health promotion, disease prevention and effective treatment of chronic illness. As a result, the portfolio is invested mostly in the healthcare, consumer discretionary, consumer staples, materials, industrials and information technology sectors.

Sector allocation		Deviation index	
Health Care Equipment & Supplies	19.4%		17.1%
Food Products	15.2%		13.9%
Life Sciences Tools & Services	13.4%		12.3%
Personal Products	10.4%		9.8%
Chemicals	6.9%		4.9%
Health Care Providers & Services	6.0%		4.1%
Textiles, Apparel & Luxury Goods	5.7%		4.6%
Pharmaceuticals	5.4%		0.4%
Specialty Retail	4.9%		3.2%
Professional Services	4.3%		3.3%
Hotels, Restaurants & Leisure	3.1%		1.1%
Biotechnology	3.1%		1.5%
Other	2.3%		-76.4%

Regional allocation

The fund is currently 57% exposed to Europe, 40% to the Americas and 3% to Asia.

Regional allocation		Deviation index	
Europe	59.1%		42.1%
America	38.3%		-35.7%
Asia	2.6%		-6.3%
Middle East	0.0%		-0.2%

Currency allocation

The fund does not engage in currency hedging transactions.

Currency allocation		Deviation index	
U.S. Dollar	45.0%		-26.0%
Euro	20.9%		12.1%
Pound Sterling	9.0%		5.2%
Swiss Franc	7.6%		5.2%
Norwegian Kroner	6.7%		6.5%
Danish Kroner	3.8%		2.9%
Hong Kong Dollar	3.4%		3.0%
Japanese Yen	2.5%		-3.6%
Mexico New Peso	1.1%		1.1%
Canadian Dollar	0.0%		-3.1%
Israeli Shekel	0.0%		-0.1%
Australian Dollar	0.0%		-1.9%
Other	0.0%		-1.2%

ESG Important information

The sustainability information in this factsheet can help investors integrate sustainability considerations in their process. This information is for informational purposes only. The reported sustainability information may not at all be used in relation to binding elements for this fund. A decision to invest should take into account all characteristics or objectives of the fund as described in the prospectus. The prospectus is available on request and free of charge on the Robeco website.

Sustainability

The fund's sustainable investment objective is to promote good health and well-being and contributing to an efficient healthcare system. Healthy living and sustainability considerations are incorporated in the investment process by the means of a target universe definition, exclusions, ESG integration, and voting. The fund only invests in companies that have a significant thematic fit as per Robeco's thematic universe methodology. Through screening on both Robeco's internally developed SDG Framework and Robeco's exclusion policy, the fund does not invest in issuers that have a negative impact on the SDGs, are in breach of international norms or where products have been deemed controversial. Financially material ESG factors are integrated in the bottom-up fundamental investment analysis to assess existing and potential ESG risks and opportunities. In addition, where a stock issuer is flagged for breaching international standards in the ongoing monitoring, the issuer will become subject to exclusion. Lastly, the fund makes use of shareholder rights and applies proxy voting in accordance with Robeco's proxy voting policy.

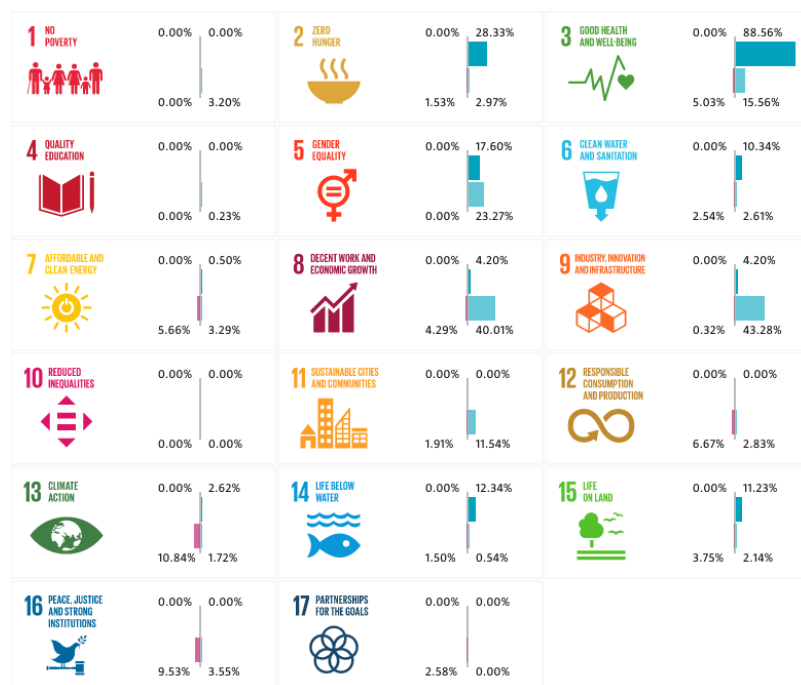
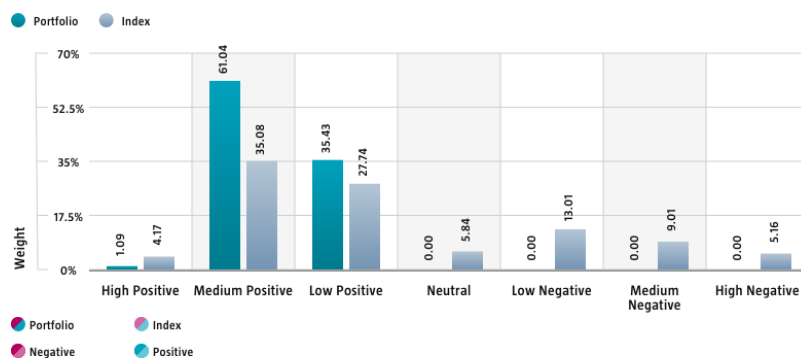
The following sections display the ESG-metrics for this fund along with short descriptions. For more information please visit the sustainability-related disclosures.

The index used for all sustainability visuals is based on MSCI World Index TRN.

SDG Impact Alignment

This distribution across SDG scores shows the portfolio weight allocated to companies with a positive, negative and neutral impact alignment with the Sustainable Development Goals (SDG) based on Robeco's SDG Framework. The framework utilizes a three-step approach to assess a company's impact alignment with the relevant SDGs and assign a total SDG score. The score ranges from positive to negative impact alignment with levels from high, medium or low impact alignment. This results in a 7-step scale from -3 to +3. For comparison, index figures are provided alongside that of the portfolio. Only holdings mapped as corporates are included in the figures.

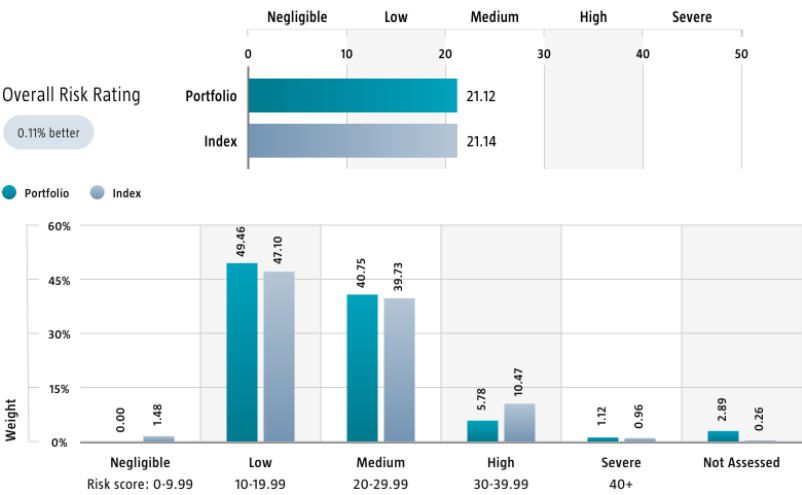
Use of the United Nations Sustainable Development Goals (SDG) logos, including the colour wheel, and icons shall only serve explanatory and illustrative purposes and may not be interpreted as an endorsement by the United Nations of this entity, or the product(s) or service(s) mentioned in this document. The opinions or interpretations shown in this document hence do not reflect the opinion or interpretations of the United Nations.



Source: Robeco. Data derived from internal processes.

Sustainalytics ESG Risk Rating

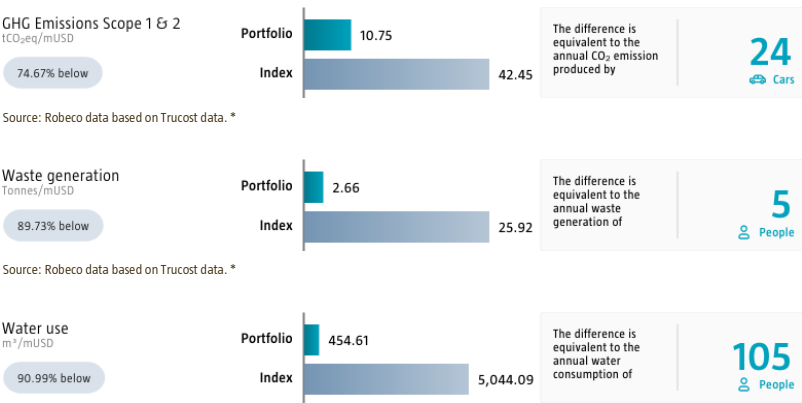
The Portfolio Sustainalytics ESG Risk Rating chart displays the portfolio's ESG Risk Rating. This is calculated by multiplying each portfolio component's Sustainalytics ESG Risk Rating by its respective portfolio weight. The Distribution across Sustainalytics ESG Risk levels chart shows the portfolio allocations broken into Sustainalytics' five ESG risk levels: negligible (0-10), low (10-20), medium (20-30), high (30-40) and severe (40+), providing an overview of portfolio exposure to the different ESG risk levels. Index scores are provided alongside the portfolio scores, highlighting the portfolio's ESG risk level compared to the index. Only holdings mapped as corporates are included in the figures.



Source: Copyright ©2024 Sustainalytics. All rights reserved.

Environmental Footprint

Environmental footprint expresses the total resource consumption of the portfolio per mUSD invested. Each assessed company's footprint is calculated by normalizing resources consumed by the company's enterprise value including cash (EVIC). We aggregate these figures to portfolio level using a weighted average, multiplying each assessed portfolio constituent's footprint by its respective position weight. For comparison, index footprints are shown besides that of the portfolio. The equivalent factors that are used for comparison between the portfolio and index represent European averages and are based on third-party sources combined with own estimates. As such, the figures presented are intended for illustrative purposes and are purely an indication. Only holdings mapped as corporates are included in the figures.



Source: Robeco data based on Trucost data. *

* Source: S&P Trucost Limited © Trucost 2024. All rights in the Trucost data and reports vest in Trucost and/or its licensors. Neither Trucost, nor its affiliates, nor its licensors accept any liability for any errors, omissions, or interruptions in the Trucost data and/or reports. No further distribution of the Data and/or Reports is permitted without Trucost's express written consent.

Engagement

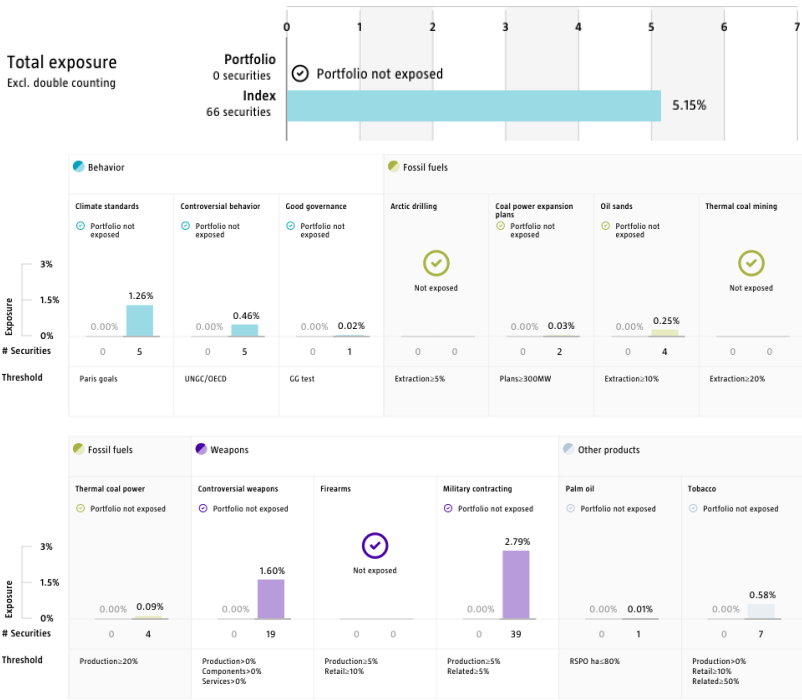
Robeco distinguishes between three types of engagement. Value Engagement focuses on long-term issues that are financially material and/or are causing adverse sustainability impacts. The themes can be broken into Environmental, Social, Governance, or Voting-related. SDG Engagement aims to drive a clear and measurable improvement in a company's SDG contribution. Enhanced engagement is triggered by misconduct and focuses on companies severely breaching international standards. The report is based on all companies in the portfolio for which engagement activities have taken place during the past 12 months. Note that companies may be under engagement in multiple categories simultaneously. While the total portfolio exposure excludes double counting, it may not equal the sum of individual category exposures.

	Portfolio exposure	# companies engaged with	# activities with companies engaged with
Total (* excluding double counting)	28.88%	12	49
Environmental	6.18%	3	10
Social	3.39%	1	4
Governance	11.21%	5	18
Sustainable Development Goals	13.59%	6	16
Voting Related	2.89%	1	1
Enhanced	0.00%	0	0

Source: Robeco. Data derived from internal processes.

Exclusions

The Exclusions charts display the degree of adherence to exclusion applied by Robeco. For reference, index exposures are shown beside that of the portfolio. Thresholds are based on revenues unless otherwise indicated. For more information about the exclusion policy and which level applies, please refer to the Exclusion Policy and Exclusion List available on Robeco.com.



Source: We use several data sources such as Sustainalytics, RSPO (Roundtable on Sustainable Palm Oil), World Bank, Freedom House, Fund for Peace and International Sanctions; further policy document available [Exclusion Policy](#)

Investment policy

RobecoSAM Sustainable Healthy Living Equities is an actively managed fund that invests globally in companies that promote good health and well-being and contribute to an efficient healthcare system. The selection of these stocks is based on fundamental analysis. The fund has sustainable investment as its objective, within the meaning of Article 9 of the Regulation (EU) 2019/2088 of 27 November 2019 on Sustainability-related disclosures in the financial sector. The strategy integrates sustainability criteria as part of the stock selection process and through a theme-specific sustainability assessment. The portfolio is built on the basis of an eligible investment universe that includes companies whose business models contribute to the thematic investment objectives. The assessment regarding relevant SDGs uses an internally developed framework, more information on which can be obtained at www.robeco.com/si. The fund also aims to achieve a better return than the index. The fund has sustainable investment as its objective within the meaning of Article 9 of the European Sustainable Finance Disclosure Regulation. The fund aims to mitigate the rising incidence of lifestyle diseases and increasing healthcare costs, by investing in companies that provide technologies, products or services, medical treatments linked to the prevention of disease and reducing the spread of infectious diseases. This is done by investing in companies that mainly advance the following UN Sustainable Development Goals (UN SDGs): Good health and well-being, Zero Hunger, and Clean water and sanitation. The fund integrates ESG (Environmental, Social and Governance) factors in the investment process and applies Robeco's Good Governance policy. The fund applies sustainability indicators, including but not limited to, normative, activity-based and region-based exclusions, and proxy voting. The majority of stocks selected will be components of the benchmark, but stocks outside the benchmark may be selected too. While the investment policy is not constrained by a benchmark, the fund may use one for comparison purposes. The fund can deviate substantially from the issuer, country and sector weightings of the benchmark. There are no restrictions on the deviation from the benchmark. The benchmark is a broad market-weighted index that is not consistent with the sustainable objective of the fund.

Fund manager's CV

David Kägi is Portfolio Manager of the RobecoSAM Sustainable Healthy Living Equities strategy and member of the Thematic Investing team. Before joining Robeco in 2019, he worked as a Buy-Side analyst covering the global healthcare sector for Bank J. Safra Sarasin in Zurich, first for Private Banking, then for Asset Management. There, he also managed the Demography Health basket certificate for Bank J. Safra Sarasin. After some years in biomedical research following his PhD, he started his career in the financial industry in 1999 as a Healthcare Analyst at the investment company BT&T, followed by a position as an Investment Analyst for private biotechnology companies with Schweizerhall Management AG in Zurich. David holds a Master in Biochemistry and a PhD in T-cell Immunology both from the ETH Zurich.

Fiscal product treatment

The fund is established in Luxembourg and is subject to the Luxembourg tax laws and regulations. The fund is not liable to pay any corporation, income, dividend or capital gains tax in Luxembourg. The fund is subject to an annual subscription tax ('tax d'abonnement') in Luxembourg, which amounts to 0.05% of the net asset value of the fund. This tax is included in the net asset value of the fund. The fund can in principle use the Luxembourg treaty network to partially recover any withholding tax on its income.

Sustainability images

The figures shown in the sustainability visuals are calculated on subfund level.

MSCI disclaimer

Source MSCI. MSCI makes no express or implied warranties or representations and shall have no liability whatsoever with respect to any MSCI data contained herein. The MSCI data may not be further redistributed or used as a basis for other indices or any securities or financial products. This report is not approved, endorsed, reviewed or produced by MSCI. None of the MSCI data is intended to constitute investment advice or a recommendation to make (or refrain from making) any kind of investment decision and may not be relied on as such.

Morningstar

Copyright © Morningstar Benelux. All Rights Reserved. The information contained herein: (1) is proprietary to Morningstar and/or its content providers; (2) may not be copied or distributed; and (3) is not warranted to be accurate, complete or timely. Neither Morningstar nor its content providers are responsible for any damages or losses arising from any use of this information. Past performance is no guarantee of future results. For more information on Morningstar, please refer to www.morningstar.com

Febelfin disclaimer

The fact that the sub-fund has obtained this label does not mean that it meets your personal sustainability goals or that the label is in line with requirements arising from any future national or European rules. The label obtained is valid for one year and subject to annual reappraisal. For further information on this label, please visit www.towardsustainability.be.



Disclaimer

This document has been carefully prepared by Robeco Institutional Asset Management B.V. (Robeco). The information contained in this publication is based upon sources of information believed to be reliable. Robeco is not answerable for the accuracy or completeness of the facts, opinions, expectations and results referred to therein. Whilst every care has been taken in the preparation of this document, we do not accept any responsibility for damage of any kind resulting from incorrect or incomplete information. This document is subject to change without notice. The value of the investments may fluctuate. Past performance is no guarantee of future results. If the currency in which the past performance is displayed differs from the currency of the country in which you reside, then you should be aware that due to exchange rate fluctuations the performance shown may increase or decrease if converted into your local currency. Unless otherwise stated, performances are i) net of fees based on transaction prices and ii) with dividends reinvested. Please refer to the prospectus and the Key Information Document of the funds for further details. These are available at the Robeco offices or via the www.robeco.com website. The ongoing charges mentioned in this publication express the operational costs including management fee, service fee, taxe d'abonnement, depositary fee and bank charges and is the one stated in the fund's latest annual report at closing date. The information contained in this document is solely intended for professional investors under the Dutch Act on the Financial Supervision (Wet financieel toezicht) or persons who are authorized to receive such information under any other applicable laws. Robeco Institutional Asset Management B.V. has a license as manager of UCITS and AIFs from the Netherlands Authority for the Financial Markets in Amsterdam.