

Strategy

The managers have a disciplined, bottom-up security selection approach, seeking to capture structural growth opportunities in Europe. The fund is run in an unconstrained, high conviction manner, focusing only on those European companies whose long-term structural growth potential is mispriced by the market. On the long side, they invest in European companies that trade below their intrinsic value. The managers can also use other investment techniques, including shorting and options. On the short side, the managers look for negative factors, such as stretched balance sheets or valuations, alongside structural changes within a company's industry. ESG considerations are fully integrated in the investment process. The typical range for net market exposure is 90-110% of fund TNA under normal market conditions. The fund also maintains higher levels of active share than a long-only equivalent.

Objectives & Investment Policy

Objective: The fund aims to achieve capital growth over the long term.

Investment Policy: The fund invests at least 70% of its assets, in equities of, and related instruments providing exposure to, companies that are listed, headquartered or do most of their business in Europe. The fund may also invest up to 20% of its assets in money market instruments on an ancillary basis.

The fund invests at least 50% of its assets in securities of companies with favourable environmental, social and governance (ESG) characteristics.

Investment Process: In actively managing the fund, the Investment Manager considers growth and valuation metrics, company financials, return on capital, cash flows and other measures, as well as company management, industry economic conditions, and other factors. The Investment Manager also considers ESG characteristics when assessing investment risks and opportunities. In determining favourable ESG characteristics, the Investment Manager takes into account ESG ratings provided by Fidelity or external agencies. Through the investment management process the Investment Manager aims to ensure that investee companies follow good governance practices.

The fund adheres to the Fidelity Sustainable Investing Framework standards. For more information, see "Sustainable Investing and ESG Integration" and the Sustainability Annex.

Derivatives and Techniques: The fund may use derivatives for hedging, efficient portfolio management and investment purposes. The fund uses derivatives, including complex derivative instruments or strategies, to meet the investment objectives of the fund which may result in leverage. The fund may maintain long and short exposure to securities through derivatives.

Benchmark: MSCI Europe Index an index that does not take into account ESG characteristics. Used for: risk monitoring, performance comparison, and performance fee calculation.

The fund invests in securities of the benchmark, however, management of the fund is discretionary, therefore the fund may invest in securities not included in the benchmark, and its performance over any period may or may not deviate significantly from that of the benchmark.

Fund Facts

Launch date: 01.10.04

Portfolio manager: Fabio Riccelli, Karoline Rosenberg

Appointed to fund: 01.07.17, 01.07.17

Years at Fidelity: 26, 17

Fund size: € 847m

Number of positions in fund*: Long 40 / Short 19

Fund reference currency: Euro (EUR)

Fund domicile: Luxembourg

Fund legal structure: SICAV

Management company: FIL Investment Management (Luxembourg) S.A.

Capital guarantee: No

Portfolio Turnover Cost (PTC): 0.07%

Portfolio Turnover Rate (PTR): -7.43%

*A definition of positions can be found on page 3 of this factsheet in the section titled "How data is calculated and presented."

Share Class Facts

Other share classes may be available. Please refer to the prospectus for more details.

Launch date: 22.02.08

NAV price in share class currency: 295.91

ISIN: LU0348529792

SEDOL: B2PZ5Q4

WKN: A0Q5FS

Bloomberg: FASTEUE LX

Dealing cut-off: 12:00 UK time (normally 13:00 Central European Time)

Distribution type: Accumulating

Ongoing Charges Figure (OCF) per year: 2.68% (30.09.23)

OCF takes into account annual management charge per year: 1.50%

Performance fee: 20% of the out-performance if the class exceeds the return of the MSCI Europe Index by more than 2% annualised. 0.00% year ended 30.09.23.

Risk Indicator



The risk indicator assumes you keep the product for 4 years. The actual risk can vary significantly if you cash in at the early stage and you may get back less.

The summary risk indicator is a guide to the level of risk of this product compared to other products. It shows how likely it is that the product will lose money because of movements in the markets or because we are not able to pay you. We have classified this product as 4 out of 7, which is a medium risk class. This rates the potential losses from future performance at a medium level, and poor market conditions could impact the capacity to pay you. Returns may increase or decrease as a result of currency fluctuations. This product does not include any protection from future market performance so you could lose some or all of your investment. If FIL Investment Management (Luxembourg) S.A. is not able to pay you what is owed, you could lose your entire investment.

Important Information

The value of your investment may fall as well as rise and you may get back less than you originally invested. The use of financial derivative instruments may result in increased gains or losses within the fund. The fund may be exposed to the risk of financial loss if a counterparty used for derivative instruments subsequently defaults. The Investment Manager's focus on securities of issuers which maintain favourable ESG characteristics or that are sustainable investments may affect the fund's investment performance favourably or unfavourably in comparison to similar funds without such focus. Funds are subject to charges and expenses. Charges and expenses reduce the potential growth of your investment. This means you could get back less than you paid in. The costs may increase or decrease as a result of currency and exchange rate fluctuations. Please refer to the Prospectus and KID of the fund before making any final investment decisions. When referring to sustainability - related aspects of the promoted fund, the decision to invest should take into account all characteristics or objectives of the promoted fund as detailed in the Prospectus. Information on sustainability-related aspects is provided pursuant to SFDR at <https://www.fidelity.lu/sfdr-entity-disclosures>.

Past performance does not predict future returns. The fund's returns may increase or decrease as a result of currency fluctuations. The investment which is promoted concerns the acquisition of units or shares in a fund, and not in a given underlying asset owned by the fund.

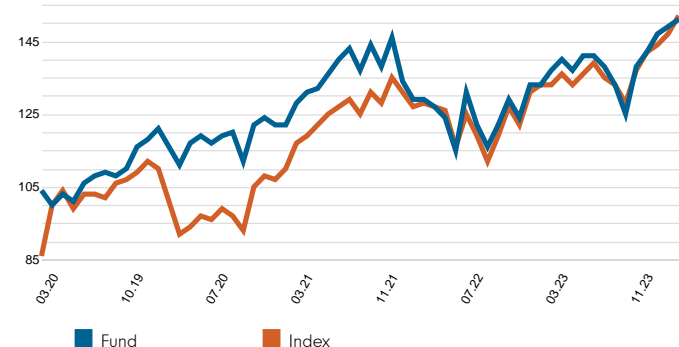
Performance Comparator(s)

Peer Group Universe Morningstar EAA Fund Europe Large-Cap Growth Equity
Market index from 22.02.08 MSCI Europe Index (Net)

Market index is for comparative purposes only unless specifically referenced in the Objectives & Investment Policy on page 1. The same index is used in the positioning tables on this factsheet.

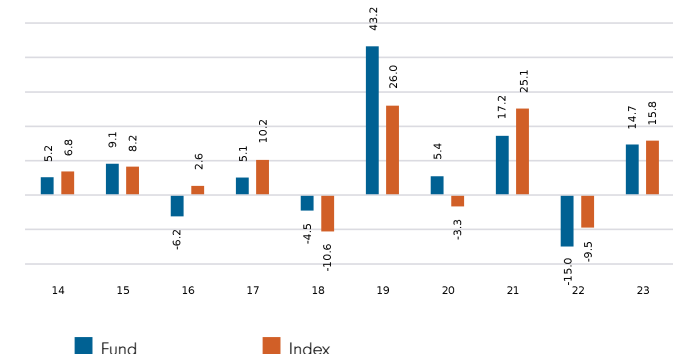
Where the effective date for the current market index is after the share class launch date, full history is available from Fidelity.

Cumulative performance in EUR (rebased to 100)



Performance is shown for the last five years (or since launch for funds launched within that period).

Performance for calendar years in EUR (%)



Performance to 31.03.24 in EUR (%)

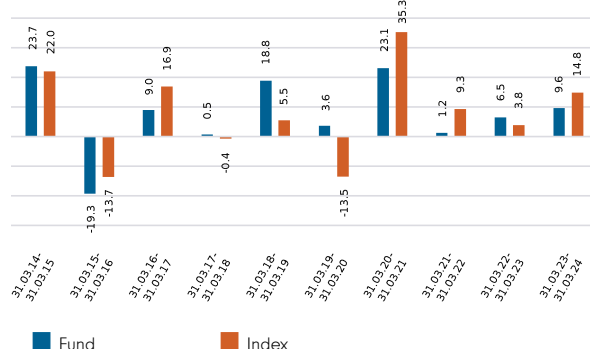
	1m	3m	YTD	1yr	3yr	5yr	Since 22.02.08*
Fund cumulative growth	0.9	6.1	6.1	9.6	18.1	50.6	196.0
Index cumulative growth	3.9	7.6	7.6	14.8	30.3	52.5	143.6
Fund annualised growth	-	-	-	9.6	5.7	8.5	7.0
Index annualised growth	-	-	-	14.8	9.2	8.8	5.7
Ranking within Peer Group Universe							
Y-ACC-Euro	54	44	44	44	19	17	
Total number of funds	56	56	56	54	48	38	
Quartile ranking**	4	4	4	4	2	2	

Source of fund performance and volatility and risk measures is Fidelity. Performance is excluding initial charge. Basis: nav-nav with income reinvested, in EUR, net of fees. If you took an initial charge of 5.25% from an investment, this is the equivalent of reducing a growth rate of 6% per annum over 5 years to 4.9%. This is the highest initial charge applicable, if the initial charge you pay is less than 5.25%, the impact on the overall performance will be less. Market indices are sourced from RIMES and other data is sourced from third-party providers such as Morningstar.

*Performance commencement date.

**Quartile rank is for the fund's primary share class as identified by Morningstar, which may be different than the share class detailed in this factsheet and refers to performance over time rated on a scale of 1-4. A ranking of 1 indicates that the item being ranked is in the top 25% of the sample and so on. Rankings are based on a performance record that is included in the Peer Group Universe. In line with Investment Association methodology, this record may include a track record extension from a legacy share class and the record may not be the same class of this factsheet. Quartile ranking is an internal Fidelity International calculation. Ranking may vary by share class.

Performance for 12 month periods in EUR (%)



Volatility & Risk (3 years)

Annualised Volatility: fund (%)	16.82	Annualised Alpha	-4.09
Relative Volatility	1.24	Beta	1.14
Sharpe Ratio: fund	0.28	Annualised Tracking Error (%)	7.02
		Information Ratio	-0.50
		R²	0.84

Calculated using month-end data points. Definitions of these terms can be found in the Glossary section of this factsheet.

Introduction

This factsheet contains information about the composition of the fund at a particular point in time. It aims to help you understand how the fund manager is positioned to achieve the fund's objectives.

The Equity Exposure table below provides an overall view of the fund. Net Equity represents - in percentage terms - how much of the fund is invested in the market. The higher the figure, the more the fund will take part in any market rises (or falls). It is important to note that Net Equity can be greater than 100% (for example if the manager is using derivative contracts).

The Long and Short Equity figures are included to show how the manager is achieving the Net Equity amount.

The definitions section at the foot of the page provides a more comprehensive explanation of the individual elements in the table.

The history chart shows how Net Equity (and its constituent parts) has changed over time.

The exposure and positioning tables on page 4 break the fund down into a number of different views, each providing a different perspective on the fund's investments.

Equity Exposure (% TNA)

	Exposure (% TNA)
Net Equity	93.1
...which is made up of	
Long Equity	106.4
Short Equity	-13.3
Other	0.0
Uninvested Cash	6.9
	100.0
Gross Equity (before aggregation)	119.7
Gross Equity (after aggregation)	119.7

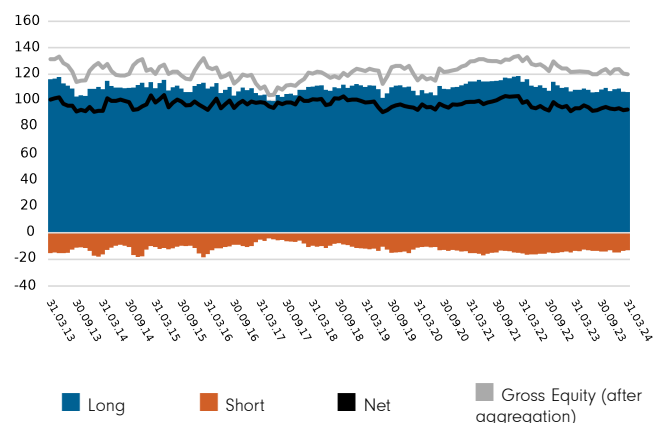
	Number of single stocks overwritten	Exposure (% TNA)
Call overwriting	0	0.0

How data is calculated and presented

Portfolio composition data has been calculated and presented according to several general principles, which are listed below.

- **Aggregation:** all investments, including derivatives, linked to a particular issuing company have been combined to form a total percentage holding for each company. The aggregate holding is referred to in this factsheet as a position. Where a company is listed in two separate countries, each listing may be classified as a separate issuing company. Exchange Traded Funds (ETFs) and derivatives on ETFs are treated as individual securities - ie not aggregated.
- **Categorisation:** for investments that have underlying securities we use the attributes of the underlying issuing company or common share to determine the appropriate sector, market capitalisation band and geographic area.
- **Derivatives:** all derivatives are included on an exposure basis and, where necessary, are delta-adjusted. Delta-adjusting expresses derivatives in terms of the equivalent number of shares that would be needed to generate the same return.
- **"Basket" securities:** securities that represent a number of company shares - like index futures or options - are allocated to categories (such as sector) whenever possible. Otherwise they are included in the "Other Index / Unclassified" category.

Equity Exposure: monthly history (% TNA)



Definition of terms:

Long Equity exposure: long positions are created through purchases of company shares or derivatives. They profit from share price increases and suffer losses if prices fall. Long Equity exposure is the total of the fund's long positions after aggregation. The reduction in market risk provided by verified hedges* is not included in this total.

Short Equity exposure: short positions are created through derivatives. They can allow the fund to profit from a fall in the price of an underlying share (although fund returns will be hurt if the price of the underlying share rises). Short Equity exposure is the total of the fund's short positions after aggregation. The total includes verified hedges* used to reduce risk and manage equity exposure.

Net Equity exposure: the percentage of the fund invested in the equity market. It is the difference between the long and the short exposures. For example, if the fund is 120% long and 25% short, the fund is 95% net invested.

Other: the value of any non-equity investments (excluding cash funds) expressed as a percentage of fund TNA.

Uninvested cash: this is 100% minus the fund's Net Equity exposure and minus Other. This leaves any residual cash exposure that is not invested in shares or via derivatives.

Gross Equity exposure: this is shown before and after the aggregation of investments linked to a particular issuing company or basket security. Any difference between the two figures shows the fund is holding long and short exposure for the same company or basket security.

Call overwriting: this is a strategy used to commit to sell shares a fund already owns at a set price, in return for a payment. The payment is retained whether the shares are ultimately sold or not and therefore generates additional return for the fund (although it sets a limit on gains). The table shows the number of underlying single stocks overwritten as well as the total of all call overwriting exposure.

% TNA: Data is presented as a percentage of TNA, which stands for Total Net Assets (the value of all the fund's assets after the deduction of any liabilities).

* A verified hedge is one where the underlying exposures of any positions held for hedging purposes demonstrate regional congruence and a correlation of at least 0.80 to the fund's portfolio or a subset thereof. Exposure calculation methodologies vary and the inclusion of verified hedges is a more conservative interpretation of gross exposure. This methodology will result in a higher gross exposure number than that calculated using a methodology that excludes verified hedges.

Active Money

Active Money 96.3%

This is the sum of the fund's overweight positions (including effective cash) when compared to the market index.

Sector/Industry Exposure (% TNA)

Sector GICS	Long	Short	Net	Index	Relative
Health Care	29.0	-0.5	28.5	15.4	13.1
Industrials	26.5	-3.2	23.3	16.4	6.9
Information Technology	17.4	-1.0	16.4	8.1	8.4
Consumer Discretionary	11.2	-1.8	9.4	11.1	-1.8
Financials	7.5	0.0	7.5	18.4	-10.9
Consumer Staples	7.5	-1.3	6.2	10.7	-4.4
Materials	3.6	-0.4	3.2	7.0	-3.7
Energy	0.0	0.0	0.0	5.4	-5.4
Utilities	0.0	0.0	0.0	3.8	-3.8
Real Estate	0.0	-0.6	-0.6	0.8	-1.4
Communication Services	3.6	-4.5	-0.9	3.0	-3.9
Total Sector Exposure	106.4	-13.3	93.1	100.0	
Other Index / Unclassified	0.0	0.0	0.0	0.0	
Total Equity Exposure	106.4	-13.3	93.1	100.0	

Geographic Exposure (% TNA)

	Long	Short	Net	Index	Relative
United Kingdom	31.8	-1.2	30.6	22.3	8.3
Germany	21.1	0.0	21.1	13.4	7.7
France	17.7	-2.3	15.3	18.6	-3.3
Denmark	8.9	0.0	8.9	5.6	3.3
Switzerland	10.3	-1.7	8.6	14.4	-5.8
Spain	5.5	-0.8	4.7	4.1	0.6
Italy	2.6	0.0	2.6	4.3	-1.7
Ireland	2.1	0.0	2.1	0.5	1.6
United States	1.5	0.0	1.5	0.0	1.5
Sweden	4.9	-4.3	0.6	4.7	-4.1
Others	0.0	-2.9	-2.9	12.1	-15.0
Total Geographic Exposure	106.4	-13.3	93.1	100.0	
Other Index / Unclassified	0.0	0.0	0.0	0.0	
Total Equity Exposure	106.4	-13.3	93.1	100.0	

Top Net Long Positions (% TNA)

	Sector GICS	Geographic Location	Fund	Index	Relative
RELX PLC	Industrials	United Kingdom	8.6	0.7	7.8
EXPERIAN PLC	Industrials	United Kingdom	6.3	0.4	5.9
SAP SE	Information Technology	Germany	6.0	1.8	4.1
NOVO-NORDISK AS	Health Care	Denmark	5.0	3.8	1.2
MERCK KGAA	Health Care	Germany	5.0	0.2	4.7
SAGE GROUP PLC	Information Technology	United Kingdom	4.9	0.1	4.7
COLOPLAST AS	Health Care	Denmark	3.9	0.2	3.7
AIR LIQUIDE SA	Materials	France	3.6	1.0	2.6
BEIERSDORF AG	Consumer Staples	Germany	3.6	0.1	3.5
EDENRED	Financials	France	3.6	0.1	3.4

Top Overweight Positions (% TNA)

	Fund	Index	Relative
RELX PLC	8.6	0.7	7.8
EXPERIAN PLC	6.3	0.4	5.9
SAGE GROUP PLC	4.9	0.1	4.7
MERCK KGAA	5.0	0.2	4.7
SAP SE	6.0	1.8	4.1
COLOPLAST AS	3.9	0.2	3.7
BEIERSDORF AG	3.6	0.1	3.5
EDENRED	3.6	0.1	3.4
CONVATEC GROUP PLC	3.1	0.0	3.1
INDUSTRIA DE DISEÑO TXTL IN SA	3.1	0.5	2.6

Positions Concentration (% TNA)

	Fund	Index
Top 10	50.3	22.7
Top 20	75.5	33.7
Top 50	106.4	52.8

Definition of terms:

Index: the index used in the positioning tables on this page is the index defined in the Performance Comparator(s) section on page 2 of this factsheet.

Top Net Long Positions: those companies in which the largest percentages of the fund's total net assets are effectively invested. Positions in other funds - including ETFs (Exchange Traded Funds) - can appear in this table, but index derivatives form part of an "Other Index / Unclassified" category which will not appear.

Top Overweight & Underweight Positions: those positions which have the largest active weight relative to the index. Positions in other funds - including ETFs (Exchange Traded Funds) - can appear in this table, but index derivatives form part of an "Other Index / Unclassified" category which will not appear. In the underweight table, any short position names have been withheld in line with Fidelity's disclosure policy.

Top Net Long Positions Concentration: illustrates the weight of the top 10, 20 and 50 positions in the fund and the weight of the top 10, 20 and 50 positions in the index. It does not attempt to show the coincidence of security ownership between fund and index.

The **sector/industry classification** used (ie GICS, ICB, TOPIX and IPD) varies by fund. Full descriptions of GICS, ICB, TOPIX and IPD can be found in the glossary.

Figures may not always sum to totals due to rounding

Market Capitalisation Exposure (% TNA)

EUR	Long	Short	Net	Index	Relative
>10bn	90.6	-5.1	85.4	92.6	-7.2
5-10bn	12.2	-5.6	6.7	6.4	0.3
1-5bn	3.5	-2.4	1.2	0.8	0.3
0-1bn	0.0	-0.2	-0.2	0.0	-0.2
Total Market Cap Exposure	106.4	-13.3	93.1	99.8	
Index / Unclassified	0.0	0.0	0.0	0.2	
Total Equity Exposure	106.4	-13.3	93.1	100.0	

Regional Exposure (% TNA)

	Long	Short	Net	Index	Relative
Europe (Eurozone)	48.9	-5.9	43.1	52.1	-9.1
UK	31.8	-1.2	30.6	22.3	8.3
Europe (non-Eurozone/UK)	24.1	-6.2	17.9	25.6	-7.7
North America	1.5	0.0	1.5	0.0	1.5
Total Regional Exposure	106.4	-13.3	93.1	100.0	
Other Index / Unclassified	0.0	0.0	0.0	0.0	
Total Equity Exposure	106.4	-13.3	93.1	100.0	

Top Underweight Positions (% TNA)

	Fund	Index	Relative
ASML HOLDING NV	0.0	3.5	-3.5
NESTLE SA	0.0	2.6	-2.6
SHELL PLC	0.0	2.0	-2.0
ASTRAZENECA PLC	0.0	1.9	-1.9
NOVARTIS AG	0.0	1.8	-1.8
Short Position - name withheld	-1.7	0.1	-1.7
ROCHE HOLDING AG	0.0	1.7	-1.7
Short Position - name withheld	-1.3	0.1	-1.4
HSBC HOLDINGS PLC	0.0	1.4	-1.4
TOTALENERGIES SE	0.0	1.3	-1.3

Attribution

Performance attribution is produced in the currency shown below. For funds with multiple share classes, the attribution return reflects the aggregate performance across all the share classes. It may therefore deviate from the published return for a particular share class. When using the analysis for hedged share classes, please consider that the attribution is shown before the impact of hedging.

The contributions shown in the tables are before the impact of charges. If charges are applied, their effect is captured in the "Other" category in the tables and will also be reflected in the fund return.

All investments, including derivatives, linked to a particular issuing company have been combined to form a total percentage for each issuing company.

The sector/industry and geographic contribution tables (where relevant) display a maximum of eleven individual entries. Where applicable, only top five and bottom five are listed, with the remaining contribution shown in the "Other Sectors" or "Others" category.

One month relative return (%) -2.97

Sector/Industry Contribution (%)

1 month

Contributions To Relative Return

	Average Relative Weight	Security Selection	Sector/ Industry Selection	Total Relative Contribution
Sector GICS				
Health Care	12.6	0.24	0.03	0.27
Consumer Staples	-4.8	0.06	0.15	0.21
Utilities	-3.8	0.00	-0.01	-0.01
Real Estate	-1.4	0.01	-0.06	-0.05
Consumer Discretionary	-2.0	-0.43	0.30	-0.13
Energy	-5.3	0.00	-0.16	-0.16
Materials	-4.0	-0.13	-0.16	-0.29
Communication Services	-3.6	-0.21	-0.11	-0.33
Information Technology	8.1	-0.32	-0.12	-0.44
Industrials	7.1	-0.17	-0.56	-0.73
Financials	-10.4	-0.31	-0.61	-0.92
Total Primary Assets	-7.5	-1.25	-1.32	-2.57
Other*	7.5			-0.40
Total	0.0			-2.97

Geographic Contribution (%)

1 month

Contributions To Relative Return

	Average Relative Weight	Security Selection	Geographic Selection	Total Relative Contribution
Switzerland	-6.4	-0.01	0.17	0.16
Belgium	-3.0	0.11	-0.02	0.09
Finland	-2.6	-0.03	0.11	0.08
Spain	0.5	0.03	0.04	0.07
Norway	-1.1	0.01	0.02	0.03
Sweden	-3.8	-0.22	0.12	-0.10
Italy	-1.5	-0.32	-0.05	-0.36
Germany	7.6	-0.42	0.01	-0.41
France	-3.3	-0.94	0.02	-0.92
United Kingdom	9.8	-1.30	0.07	-1.23
Others	-3.7	-0.07	0.09	0.02
Total Primary Assets	-7.5	-3.14	0.57	-2.57
Other*	7.5			-0.40
Total	0.0			-2.97

*Other includes portfolio components not already listed such as cash, expenses and other miscellaneous items.

Glossary / additional notes

Volatility & Risk

Annualised volatility: a measure of how variable returns for a fund or comparative market index have been around their historical average (also known as “standard deviation”). Two funds may produce the same return over a period. The fund whose monthly returns have varied less will have a lower annualised volatility and will be considered to have achieved its returns with less risk. The calculation is the standard deviation of 36 monthly returns presented as an annualised number. Volatility for funds and indices are calculated independently of each other.

Relative volatility: a ratio calculated by comparing the annualised volatility of a fund to the annualised volatility of a comparative market index. A value greater than 1 indicates the fund has been more volatile than the index. A value less than 1 shows the fund has been less volatile than the index. A relative volatility of 1.2 means the fund has been 20% more volatile than the index, while a measure of 0.8 would mean the fund has been 20% less volatile than the index.

Sharpe ratio: a measure of a fund's risk-adjusted performance, taking into account the return on a risk-free investment. The ratio allows an investor to assess whether the fund is generating adequate returns for the level of risk it is taking. The higher the ratio, the better the risk-adjusted performance has been. If the ratio is negative, the fund has returned less than the risk-free rate. The ratio is calculated by subtracting the risk-free return (such as cash) in the relevant currency from the fund's return, then dividing the result by the fund's volatility. It is calculated using annualised numbers.

Annualised alpha: the difference between a fund's expected return (based on its beta) and the fund's actual return. A fund with a positive alpha has delivered more return than would be expected given its beta.

Beta: a measure of a fund's sensitivity to market movements (as represented by a market index). The beta of the market is 1.00 by definition. A beta of 1.10 shows that the fund could be expected to perform 10% better than the index in up markets and 10% worse in down markets, assuming all other factors remain constant. Conversely, a beta of 0.85 indicates that the fund could be expected to perform 15% worse than the market return during up markets and 15% better during down markets.

Annualised tracking error: a measure showing how closely a fund follows the index to which it is being compared. It is the standard deviation of the fund's excess returns. The higher the fund's tracking error, the higher the variability of fund returns around the market index.

Information ratio: a measure of a fund's effectiveness in generating excess return for the level of risk taken. An information ratio of 0.5 shows the fund has delivered an annualised excess return equivalent to half the value of the tracking error. The ratio is calculated by taking the fund's annualised excess return and dividing it by the fund's tracking error.

R²: a measure representing the degree to which a fund's return can be explained by the returns of a comparative market index. A value of 1 signifies the fund and index are perfectly correlated. A measure of 0.5 means only 50% of the fund's performance can be explained by the index. If the R² is 0.5 or lower, the fund's beta (and therefore its alpha too) is not a reliable measure (due to a low correlation between fund and index).

Ongoing charges

The ongoing charges figure represents the charges taken from the fund over a year. It is calculated at the fund's financial year end and may vary from year to year. For classes of funds with fixed ongoing charges, this may not vary from year to year. For new classes of funds or classes undergoing corporate actions (eg amendment to annual management charge), the ongoing charges figure is estimated until the criteria are met for an actual ongoing charges figure to be published.

The types of charges included in the ongoing charges figure are management fees, administration fees, custodian and depositary fees and transaction charges, shareholder reporting costs, regulatory registration fees, Directors fees (where applicable) and bank charges.

It excludes: performance fees (where applicable); portfolio transaction costs, except in the case of an entry/exit charge paid by the fund when buying or selling units in another collective investment undertaking.

For more information about charges (including details of the fund's financial year end), please consult the charges section in the most recent Prospectus.

Historic yield

The historic yield for a fund is based on its dividends declared over the preceding 12 months. It is calculated by summing the dividend rates declared in that period, divided by the price as at the date of publication. Declared dividends may not be confirmed and may be subject to change. Where 12 months of declared dividend data does not exist a historic yield will not be published.

Sector/industry classification

GICS: The Global Industry Classification Standard is a taxonomy mainly used across MSCI and S&P indices in which each company is assigned by its principal business activity to one of 11 sectors, 24 industry groups, 69 industries and 158 sub-industries. More information is available at <http://www.msci.com/gics>

ICB: The Industry Classification Benchmark is a taxonomy mainly used across FTSE Russell indices in which each company is assigned by its principal business activity to one of 11 industries, 20 supersectors, 45 sectors and 173 subsectors. More information is available at <https://www.ftserussell.com/data/industry-classification-benchmark-icb>

TOPIX: Tokyo stock Price Index, commonly known as TOPIX, is a stock market index for the Tokyo Stock Exchange (TSE) in Japan, tracking all domestic companies of the exchange's First Section. It is calculated and published by the TSE.

IPD means the Investment Property Databank who are a provider of performance analysis and benchmarking services for investors in real estate. IPD UK Pooled Property Funds Index - All Balanced Funds is a component of the IPD Pooled Funds Indices which is published quarterly by IPD.

Independent Assessment

Primary share class: is identified by Morningstar when the analysis calls for only one share class per fund to be in the peer group. It is the share class Morningstar recommends as the best proxy for the portfolio for the relevant market and category/GIF combination. In most cases the share class chosen will be the most retail version (based upon actual management charge, inception date, distribution status, currency and other factors) unless a share class that is less retail focused has a much longer track record. It is different to the oldest share class data point in that it is on an available for sale level and not all markets will have the oldest share class for sale in that region. The Primary share class is also based on category so each available for sale/category combination for the fund will have its own primary share class.

Portfolio Turnover Rate (PTR) and Portfolio Turnover Cost (PTC), where shown: SRII does not define a methodology for these values; ours is as follows: **PTR** = (purchases of securities + sales of securities) minus (subscriptions of units + redemptions of units), divided by average fund value over the prior 12 months multiplied by 100. Any funds' trading in Fidelity Institutional Liquidity Funds is excluded from the PTR calculation. **PTC** = PTR (capped at 100%) x transaction cost, where transaction cost is calculated as ex-post (i.e. prior 12 months) MiFID disclosure of portfolio transaction costs minus implicit costs.



Important Information

This is a marketing communication. This information must not be reproduced or circulated without prior permission.

Fidelity only offers information on products and services and does not provide investment advice based on individual circumstances, other than when specifically stipulated by an appropriately authorised firm, in a formal communication with the client.

Fidelity International refers to the group of companies which form the global investment management organisation that provides information on products and services in designated jurisdictions outside of North America. This communication is not directed at, and must not be acted upon by persons inside the United States and is otherwise only directed at persons residing in jurisdictions where the relevant funds are authorised for distribution or where no such authorisation is required.

Unless otherwise stated all products are provided by Fidelity International, and all views expressed are those of Fidelity International. Fidelity, Fidelity International, the Fidelity International logo and F symbol are registered trademarks of FIL Limited. FIL Limited assets and resources as at 28/02/2023 - data is unaudited. Research professionals include both analysts and associates. The performance figures shown do not take into account the fund's Initial Charge. If you took an initial charge of 5.25% from an investment, this is the equivalent of reducing a growth rate of 6% per annum over 5 years to 4.9%. This is the highest initial charge applicable, if the initial charge you pay is less than 5.25%, the impact on the overall performance will be less.

Fidelity Active Strategy ('FAST' or the 'Fund') is an open-ended investment company (SICAV) established in Luxembourg with different classes of shares. The Fund is registered under Part I of the Luxembourg Law of 17 December 2010 relating to undertakings for collective investment, as amended. The Fund therefore qualifies as an undertaking for collective investment in transferable securities ('UCITS') and has obtained recognition under the amended EC Council Directive 2009/65/EC. FIL Investment Management (Luxembourg) S.A. reserves the right to terminate the arrangements made for the marketing of the sub-fund and/or its shares in accordance with Article 93a of Directive 2009/65/EC and Article 32a of Directive 2011/61/EU. Prior notice of this cessation will be made in Luxembourg.

Morningstar annualised growth rates, total return, sector median performance and ranks - Data Source - © 2024 Morningstar, Inc. All Rights Reserved. The information contained herein: (1) is proprietary to Morningstar and/or its content providers; (2) may not be copied or distributed; and (3) is not warranted to be accurate, complete or timely. Neither Morningstar nor its content providers are responsible for any damages or losses arising from any use of this information.

This share class is registered and distributed in the following locations: Czech Republic, France, Germany, Hungary, Italy, Luxembourg, Poland, Portugal, Slovakia, Spain.

We recommend that you obtain detailed information before taking any investment decision on the basis of the current prospectus and KID (key information document), along with the current annual and semi-annual reports free of charge through <https://www.fidelityinternational.com>, from our distributors, from your financial advisor or from the branch of your bank and from our European Service Centre in Luxembourg, FIL (Luxembourg) S.A. 2a, rue Albert Borschette BP 2174 L-1021 Luxembourg. Issued by FIL (Luxembourg) S.A., authorised and supervised by the CSSF (Commission de Surveillance du Secteur Financier). Investors/ potential investors can obtain information on their respective rights regarding complaints and litigation on your local Fidelity website which can be accessed via the following link <https://www.fidelityinternational.com> (Products & services) by selecting your country of residence. All documentation and information will be in the local or an accepted European language of the country selected.

Documentation can also be obtained from the following paying agents/distributors: **Czech Republic** - UniCredit Bank Czech Republic a.s., Zeletavská 1525/1, 14092 Prag 4 - Michle, Czech Republic., **Hungary** - Raiffeisenbank Zentralbank Österreich AG, Akademia u. 6, 1054 Budapest., **Slovakia** - UniCredit Bank Slovakia, a.s., Sancova 1/A 81333, Slovakia.

France : Issued by FIL Gestion, a portfolio management company approved by the AMF under the number GP03-004, 21 avenue Kleber, 75116 Paris.

Germany : For German Wholesale clients issued by FIL Investments Services GmbH, Kastanienhöhe 1, 61476 Kronberg im Taunus. For German Institutional clients issued by FIL (Luxembourg) S.A., 2a, rue Albert Borschette BP 2174 L-1021 Luxembourg. For German Pension clients issued by FIL Finance Services GmbH, Kastanienhöhe 1, 61476 Kronberg im Taunus.

Poland : This material does not constitute a recommendation within the meaning of the Regulation of the Polish Minister of Finance Regarding Information Constituting Recommendations Concerning Financial Instruments or Issuers Thereof dated October 19, 2005. No statements or representations made in this document are legally binding on Fidelity or the recipient and not constitute an offer within the meaning of the Polish Civil Code Act of 23 April 1964.

Portugal : Fidelity Funds is registered with the CMVM and the legal documents can be obtained from locally authorised distributors.

Spain : Fidelity Funds and Fidelity Active Strategy (FAST) are open-ended collective investment schemes incorporated in Luxembourg. The distributing and depository entities are, respectively, FIL (Luxembourg) S.A. and Brown Brothers Harriman (Luxembourg) S.C.A. Fidelity Funds and FAST are registered for marketing in Spain in the register of Foreign Collective Investment Undertakings of the CNMV under registration numbers 124 and 649 respectively, where detailed information on the local distributors can be obtained.

United Arab Emirates : For the United Arab Emirates, the DIFC branch of FIL Distributors International Limited, is regulated by the DFSA for the provision of Arranging Deals in Investments only. All communications and services are directed at Professional Clients and Market Counterparty only (as defined in the DFSA rulebook). Persons other than Professional Clients and Market Counterparties, such as Retail Clients, are NOT the intended recipients of our communications or services. This document contains information that makes reference to a Fund which is not subject to any form of regulation or approval by the Dubai Financial Services Authority ("DFSA"). The DFSA has no responsibility for reviewing or verifying any Prospectus or other documents in connection with this Fund. Accordingly, the DFSA has not approved this Prospectus or any other associated documents nor taken any steps to verify the information set out in this Prospectus and has no responsibility for it. Collective Investment Rules (CIR) 134 CIR/VER30/02-21. The Units to which this Prospectus relates may be illiquid and/or subject to restrictions on their resale. Prospective purchasers should conduct their own due diligence on the Units. If you do not understand the contents of this document, you should consult an authorised financial adviser.

CSO4925 CL1305901/NA English 51407 T3a