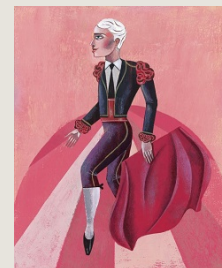


BANTLEON OPPORTUNITIES L (IT)

Factsheet 28 March 2024

Promotional material



Investment strategy

BANTLEON OPPORTUNITIES L is an absolute return fund that focuses on high-quality bonds. The investment objective is to generate attractive returns by consistently adapting bond maturities and equity exposure to projected economic developments while largely avoiding debtor and exchange rate risks.

The total return is comprised of the following components: management of average bond maturities ranging from 0 to 9 years, management of equity exposure ranging from 0% to 40% of the fund's total assets, management of the yield curve, management of the bond allocation based on a good to very good credit rating, occasional inclusion of inflation-indexed bonds. The fund invests in particular in government bonds, bonds issued by public authorities or similar safe bonds from the Eurozone. Up to 40% of the fund assets may be invested in the global equity markets via equity index futures.

General facts

ISIN	LU0337414568
WKN	A0NB6T
Net asset value	177.78 EUR
Fund volume	53.16 m EUR
Fiscal year	1 December - 30 November
Use of income	accumulating
Fund domicile	Luxembourg
Legal form	SICAV (UCITS)
Universe	Multi-Asset
Inception date	31 March 2008
Share class currency	EUR
Fund currency	EUR
Approved for distribution in	LU, DE, AT, CH, ES, IT
Custodian	UBS Europe SE, Luxembourg Branch
Management company	BANTLEON Invest AG
Sustainable Finance Disclosure Regulation	Art. 8

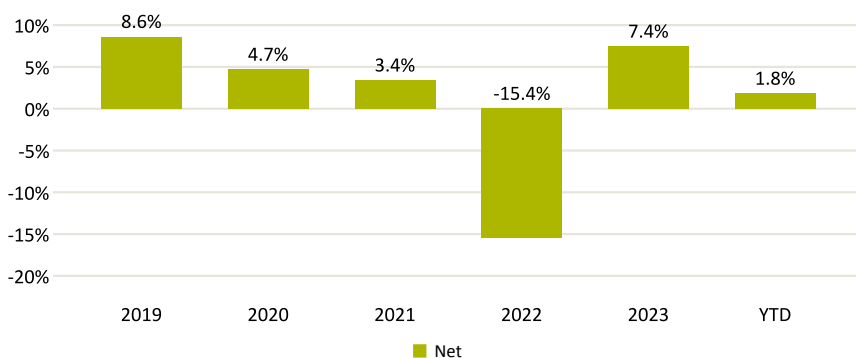
Performance since inception



Fees

Management fee	0.88%
All-in fee	0.17% p.a.
Total expenses	1.06% p.a.
Subscription fee	no subscription fee
Minimum investment	No

Calendar year performance



Risk and return figures

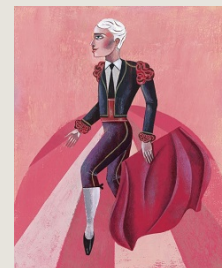
YTD	1.80%
1 year	6.31%
3 years p.a.	-1.75%
5 years p.a.	1.17%
Since inception	77.78%
Since inception p.a.	3.66%
Ex-ante Value at Risk 99% (10 days) ²	2.84%
Volatility p.a. (36 months)	6.02%
Max. historical drawdown (36 months)	18.30%
Sharpe ratio (36 months)	-0.52

²As of: 27 March 2024

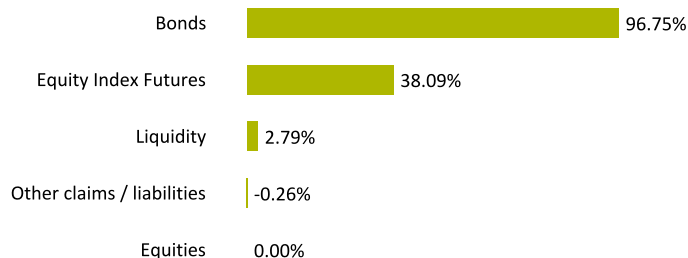
BANTLEON OPPORTUNITIES L (IT)

Factsheet 28 March 2024

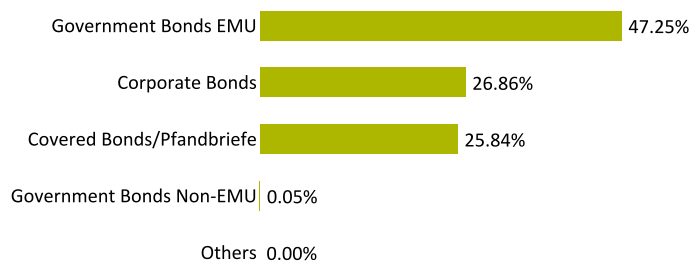
Promotional material



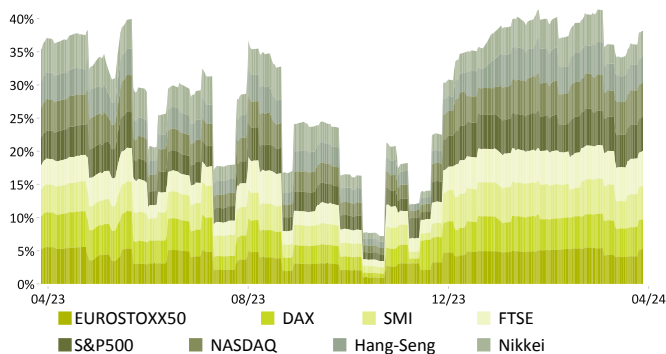
Overall asset allocation



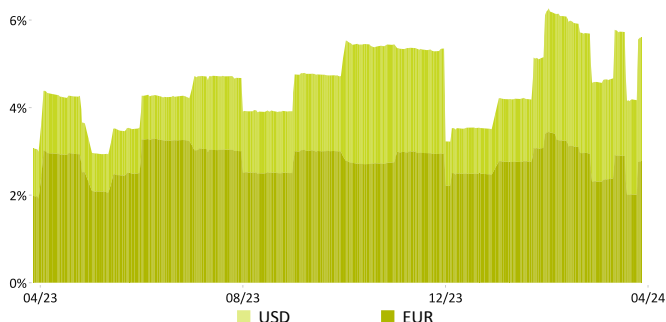
Bonds by borrower category



Equity exposure over time (12 months)



Duration over time (12 months)

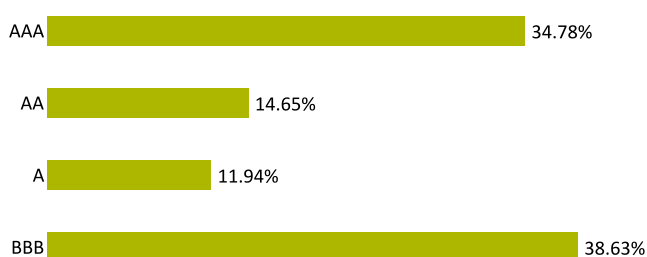


Key figures

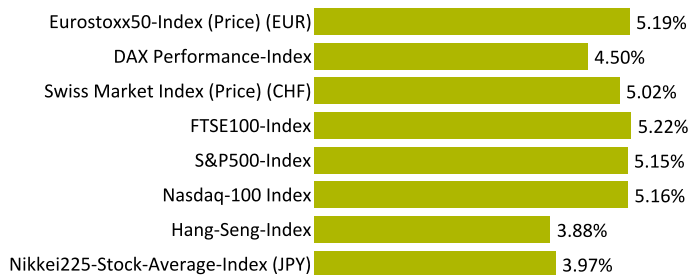
Ø Bond ratings	A+
Ø Macaulay duration incl. derivatives	5.73 years
Ø Effective duration incl. derivatives	5.59%
Equity exposure incl. futures	38.09%
Foreign currency exposure	2.77%
Solvency coefficient ³	30.37%

³As of: 18 March 2024

Bonds by rating



Current equity exposure



BANTLEON OPPORTUNITIES L (IT)

Factsheet 28 March 2024

Promotional material



Opportunities

- Capital gains resulting from increasing bond and equity prices
- Continuous adjustment of equity allocation and bond duration in line with economic environment
- Professional asset management makes the most of the earnings potential of bonds
- Broad diversification across individual bonds reduces the issuer risk
- Fund invests exclusively in bonds with high issuer quality

Risks

- Capital losses resulting from declining bond and equity prices
- Use of derivatives could amplify capital market losses
- Risk of rating downgrades for issuers
- Liquidity risk in the event of general turmoil on the capital market
- Net asset value per share could fall below purchase price

Summary Risk Indicator (SRI)



Contact

BANTLEON AG
Claridenstrasse 35
CH-8002 Zürich

BANTLEON Invest AG
An der Börse 7
D-30159 Hannover

Additional information and disclaimer

* The bar chart illustrates the performance in the past. In the presentation of the gross performance (BVI method), all costs incurred at fund level (e.g. management and custodian bank fees) have already been taken into account. In the presentation of the net performance, the current maximum front-end load included in the issue price was also deducted. Since the front-end load for a one-time investment is only payable in the first year, the net performance differs from the BVI performance only in the first year. Investor-specific costs such as custody account fees are not taken into account. The figures are historical data and do not constitute a guarantee of future developments. The present document shall exclusively serve for information purposes and shall neither be seen as an investment advice nor a recommendation or request for a purchase or sale of investment instruments (including funds). The given information can and should not replace an individually coordinated consultation by persons qualified for this purpose. All statements are based on the information currently available to BANTLEON and can be changed without any notification. The full details of the »BANTLEON Mutual Funds« are described in the currently valid prospectus, the key information document (PRIIP-KID) and the semi-annual and annual reports. These documents are the only binding basis for a purchase of fund shares. They are available free of charge in German and English on www.bantleon.com or can be ordered in printed form from BANTLEON Invest AG, An der Börse 7, 30159 Hannover (Fund Management Company in Germany), BANTLEON GmbH, An der Börse 7, 30159 Hannover, Erste Bank der österreichischen Sparkassen AG, Am Belvedere 1, 1100 Vienna (Contact and Information Agent in Austria), BANTLEON AG, Claridenstrasse 35, 8002 Zurich (Representative in Switzerland) or UBS Switzerland AG, Bahnhofstrasse 45, 8001 Zurich (Paying Agent in Switzerland). A summary of investor rights including further information on instruments of legal enforcement is available in German and English at <https://www.bantleon.com/rechtliche-hinweise> respectively <https://www.bantleon.com/en/general-information>. Bantleon may revoke the distribution of the »BANTLEON Mutual Funds« in a member state of the European Union at any time. Performance calculations are based on the daily fund share prices and the reinvestment of income (BVI method). All costs within the fund are taken into consideration, except the subscription fee. Additional fees, commissions and other costs can be charged at the time of buying. These costs are not taken into account in the calculations presented here and can have a negative impact on performance. Past performance is not indicative of future results. The issued shares of the »BANTLEON Mutual Funds« are only allowed to be offered or sold in legal jurisdictions where such an offer or sale is permitted. In particular, the shares cannot be offered or sold within the United States of America nor to or on behalf of US citizens or persons living in the United States of America or anyone qualifying as a US person according to the applicable regulations in the United States of America. This document and its content are not allowed to be distributed within the USA. The distribution and publication of this document as well as the offer and sale of shares may also be subject to restrictions in other legal jurisdictions. The information herein has been compiled with the utmost care and attention. However, no responsibility is taken for the correctness and completeness of this information. Any liability for possible losses directly or indirectly linked to this information is excluded. This is a translation of the German disclaimer. The German version shall be binding for the interpretation of this document.