

Strategy

The portfolio manager focuses on three main factors: high return on capital, strong management and industry analysis before investing in a company. This focus leads to a portfolio with a quality growth bias. The manager invests in two categories of stocks i.e. Compounders category holdings form the core of the portfolio and are typically held from a long-term perspective of approximately 2-5 years. They typically have defensive characteristics, enjoy some pricing power and/or secular growth opportunities. The second category is Transformers. These are companies which are either witnessing high cyclical growth or are special situations. Cyclical / positive momentum companies typically consist of defensible brands at the early stage of the cycle, which often enjoy positive business momentum. Special Situations companies are those involved in M&A, divestitures, reorganisations, etc.

Objectives & Investment Policy

Objective: The fund aims to achieve capital growth over the long term.

Investment Policy: The fund invests at least 70% of its assets, in equities of companies from anywhere in the world, including emerging markets. The fund may also invest in money market instruments on an ancillary basis. The fund invests at least 50% of its assets in securities of companies with favourable environmental, social and governance (ESG) characteristics.

The fund will invest in a limited number of securities, resulting in portfolio concentration.

Investment Process: In actively managing the fund, the Investment Manager considers growth and valuation metrics, company financials, return on capital, cash flows and other measures, as well as company management, industry, economic conditions, and other factors. The Investment Manager also considers ESG characteristics when assessing investment risks and opportunities. In determining favourable ESG characteristics, the Investment Manager takes into account ESG ratings provided by Fidelity or external agencies. Through the investment management process, the Investment Manager aims to ensure that investee companies follow good governance practices.

The fund adheres to the Fidelity Sustainable Investing Framework standards. For more information, see the section "Sustainable Investing and ESG Integration".

Derivatives and Techniques: The fund may use derivatives for hedging, efficient portfolio management and investment purposes.

Benchmark: MSCI ACWI Index, an index that does not take into account ESG characteristics. Used for: investment selection, risk monitoring, and performance comparison.

Fund Facts

Launch date: 14.01.03

Portfolio manager: Ashish Kochar

Appointed to fund: 15.09.21

Years at Fidelity: 2

Fund size: € 791m

Number of positions in fund*: 85

Fund reference currency: US Dollar (USD)

Fund domicile: Luxembourg

Fund legal structure: SICAV

Management company: FIL Investment Management (Luxembourg) S.A.

Capital guarantee: No

Portfolio Turnover Cost (PTC): 0.03%

Portfolio Turnover Rate (PTR): 71.31%

*A definition of positions can be found on page 3 of this factsheet in the section titled "How data is calculated and presented."

Share Class Facts

Other share classes may be available. Please refer to the prospectus for more details.

Launch date: 25.09.13

NAV price in share class currency: 28.39

ISIN: LU0936578706

SEDOL: BD5HW00

WKN: A1W4T6

Bloomberg: FFGFYEU LX

Dealing cut-off: 15:00 UK time (normally 16:00 Central European Time)

Distribution type: Income

Distribution frequency: Annual

Ongoing Charges Figure (OCF) per year: 1.06% (30.04.23)

OCF takes into account annual management charge per year: 0.8%

Independent Assessment

Information is the latest available at date of publication. See Glossary for further details. As some ratings agencies may use past performance to produce their assessments, these are not a reliable indicator of future results.

Morningstar Rating: ****

Scope Rating: (A)

Risk Indicator



The risk indicator assumes you keep the product for 4 years. The actual risk can vary significantly if you cash in at the early stage and you may get back less.

The summary risk indicator is a guide to the level of risk of this product compared to other products. It shows how likely it is that the product will lose money because of movements in the markets or because we are not able to pay you. We have classified this product as 4 out of 7, which is a medium risk class. This rates the potential losses from future performance at a medium level, and poor market conditions could impact the capacity to pay you. Returns may increase or decrease as a result of currency fluctuations. This product does not include any protection from future market performance so you could lose some or all of your investment. If FIL Investment Management (Luxembourg) S.A. is not able to pay you what is owed, you could lose your entire investment.

Important Information

The value of your investment may fall as well as rise and you may get back less than you originally invested. The use of financial derivative instruments may result in increased gains or losses within the fund. This fund invests in a relatively small number of companies. This can make the fund more volatile than other funds that are more diversified. The Investment Manager's focus on securities of issuers which maintain favourable ESG characteristics or that are sustainable investments may affect the fund's investment performance favourably or unfavourably in comparison to similar funds without such focus. Funds are subject to charges and expenses. Charges and expenses reduce the potential growth of your investment. This means you could get back less than you paid in. The costs may increase or decrease as a result of currency and exchange rate fluctuations. Please refer to the Prospectus and KID of the fund before making any final investment decisions. When referring to sustainability-related aspects of a promoted fund, the decision to invest should take into account all characteristics or objectives of the promoted fund as detailed in the prospectus.

Past performance does not predict future returns. The fund's returns may increase or decrease as a result of currency fluctuations. The investment which is promoted concerns the acquisition of units or shares in a fund, and not in a given underlying asset owned by the fund.

Performance Comparator(s)

Peer Group Universe

Morningstar EAA Fund Global Large-Cap Blend Equity

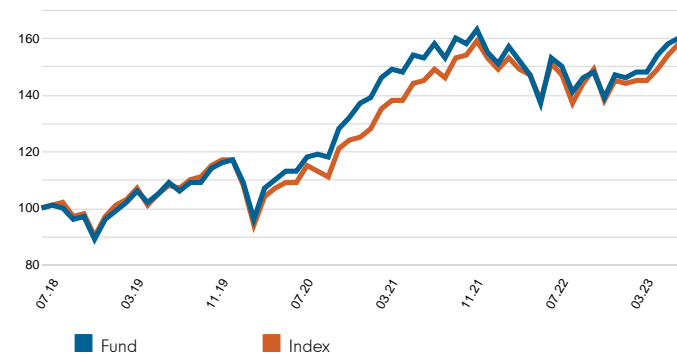
Market index from 01.11.11

MSCI ACWI Index (Net)

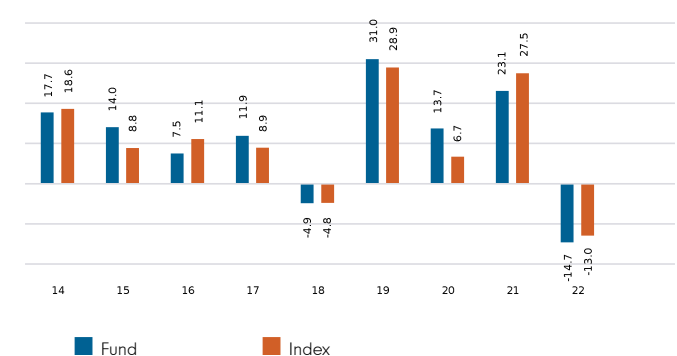
Market index is for comparative purposes only unless specifically referenced in the Objectives & Investment Policy on page 1. The same index is used in the positioning tables on this factsheet.

Where the effective date for the current market index is after the share class launch date, full history is available from Fidelity.

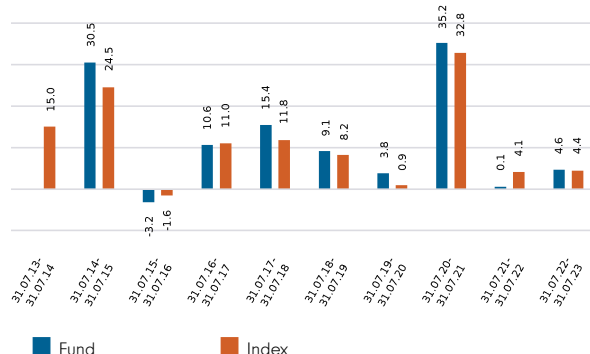
Cumulative performance in EUR (rebased to 100)



Performance for calendar years in EUR (%)



Performance for 12 month periods in EUR (%)



Volatility & Risk (3 years)

| | | | |
|--|-------|--------------------------------------|-------|
| Annualised Volatility: fund (%) | 14.06 | Annualised Alpha | -0.19 |
| Relative Volatility | 1.01 | Beta | 0.97 |
| Sharpe Ratio: fund | 0.87 | Annualised Tracking Error (%) | 3.98 |
| | | Information Ratio | -0.18 |
| | | R² | 0.92 |

Calculated using month-end data points. Definitions of these terms can be found in the Glossary section of this factsheet.

Performance to 31.07.23 in EUR (%)

| | 1m | 3m | YTD | 1yr | 3yr | 5yr | Since 25.09.13* |
|---|-----|-----|------|-----|------|------|-----------------|
| Fund cumulative growth | 1.6 | 8.6 | 15.4 | 4.6 | 41.6 | 60.4 | 188.5 |
| Index cumulative growth | 2.6 | 8.6 | 14.3 | 4.4 | 44.4 | 57.6 | 170.4 |
| Fund annualised growth | - | - | - | 4.6 | 12.3 | 9.9 | 11.4 |
| Index annualised growth | - | - | - | 4.4 | 13.0 | 9.5 | 10.6 |
| Ranking within Peer Group Universe | | | | | | | |
| Y-ACC-USD | 637 | 248 | 235 | 298 | 222 | 89 | |
| Total number of funds | 880 | 857 | 836 | 780 | 580 | 435 | |
| Quartile ranking** | 3 | 2 | 2 | 2 | 2 | 1 | |

Source of fund performance and volatility and risk measures is Fidelity. Performance is excluding initial charge. Basis: nav-nav with income reinvested, in EUR, net of fees. If you took an initial charge of 5.25% from an investment, this is the equivalent of reducing a growth rate of 6% per annum over 5 years to 4.9%. This is the highest initial charge applicable, if the initial charge you pay is less than 5.25%, the impact on the overall performance will be less. Market indices are sourced from RIMES and other data is sourced from third-party providers such as Morningstar.

*Performance commencement date.

**Quartile rank is for the fund's primary share class as identified by Morningstar, which may be different than the share class detailed in this factsheet and refers to performance over time rated on a scale of 1-4. A ranking of 1 indicates that the item being ranked is in the top 25% of the sample and so on. Rankings are based on a performance record that is included in the Peer Group Universe. In line with Investment Association methodology, this record may include a track record extension from a legacy share class and the record may not be the same class of this factsheet. Quartile ranking is an internal Fidelity International calculation. Ranking may vary by share class.

Introduction

This factsheet contains information about the composition of the fund at a particular point in time. It aims to help you understand how the fund manager is positioned to achieve the fund's objectives.

The Equity Exposure table below provides an overall view of the fund. This represents - in percentage terms - how much of the fund is invested in the market. The higher the figure, the more the fund will take part in any market rises (or falls).

The definitions section provides a more comprehensive explanation of the individual elements in the table.

The exposure and positioning tables on page 4 break the fund down into a number of different views, each providing a different perspective on the fund's investments.

How data is calculated and presented

Portfolio composition data has been calculated and presented according to several general principles, which are listed below.

- **Aggregation:** all investments, including derivatives, linked to a particular issuing company have been combined to form a total percentage holding for each company. The aggregate holding is referred to in this factsheet as a position. Where a company is listed in two separate countries, each listing may be classified as a separate issuing company. Exchange Traded Funds (ETFs) and derivatives on ETFs are treated as individual securities - ie not aggregated.
- **Categorisation:** for investments that have underlying securities we use the attributes of the underlying issuing company or common share to determine the appropriate sector, market capitalisation band and geographic area.
- **Derivatives:** all derivatives are included on an exposure basis and, where necessary, are delta-adjusted. Delta-adjusting expresses derivatives in terms of the equivalent number of shares that would be needed to generate the same return.
- **"Basket" securities:** securities that represent a number of company shares - like index futures or options - are allocated to categories (such as sector) whenever possible. Otherwise they are included in the "Other Index / Unclassified" category.

Equity Exposure (% TNA)

| | Exposure (% TNA) |
|-----------------|---------------------|
| Equity | 94.6 |
| Other | 0.0 |
| Uninvested Cash | 5.4 |

Definition of terms:

Equity: the percentage of the fund that is currently invested in the equity market.

Other: the value of any non-equity investments (excluding cash funds) expressed as a percentage of fund TNA.

Uninvested cash: this is 100% minus the fund's Equity exposure and minus Other. This leaves any residual cash exposure that is not invested in shares or via derivatives.

% TNA: Data is presented as a percentage of TNA, which stands for Total Net Assets (the value of all the fund's assets after the deduction of any liabilities).

Active Money

Active Money 78.0%

This is the sum of the fund's overweight positions (including effective cash) when compared to the market index.

Sector/Industry Exposure (% TNA)

| Sector GICS | Fund | Index | Relative |
|------------------------------|-------------|--------------|----------|
| Financials | 24.3 | 15.6 | 8.7 |
| Information Technology | 19.7 | 21.9 | -2.2 |
| Industrials | 12.5 | 10.5 | 2.0 |
| Consumer Discretionary | 11.4 | 11.4 | 0.0 |
| Health Care | 9.0 | 11.6 | -2.6 |
| Consumer Staples | 6.8 | 7.2 | -0.3 |
| Communication Services | 5.5 | 7.5 | -2.0 |
| Materials | 3.5 | 4.6 | -1.1 |
| Utilities | 1.0 | 2.7 | -1.7 |
| Energy | 0.7 | 4.7 | -4.0 |
| Real Estate | 0.2 | 2.3 | -2.1 |
| Total Sector Exposure | 94.6 | 100.0 | |
| Other Index / Unclassified | 0.0 | 0.0 | |
| Total Equity Exposure | 94.6 | 100.0 | |

Geographic Exposure (% TNA)

| | Fund | Index | Relative |
|----------------------------------|-------------|--------------|----------|
| United States | 61.2 | 62.0 | -0.8 |
| France | 5.5 | 3.0 | 2.5 |
| Canada | 4.6 | 2.9 | 1.7 |
| India | 4.5 | 1.5 | 3.0 |
| Japan | 4.3 | 5.5 | -1.2 |
| United Kingdom | 3.1 | 3.6 | -0.5 |
| China | 2.8 | 3.3 | -0.5 |
| Switzerland | 1.9 | 2.5 | -0.5 |
| Korea (South) | 1.9 | 1.3 | 0.5 |
| Netherlands | 1.4 | 1.1 | 0.3 |
| Others | 3.4 | 13.4 | -10.0 |
| Total Geographic Exposure | 94.6 | 100.0 | |
| Other Index / Unclassified | 0.0 | 0.0 | |
| Total Equity Exposure | 94.6 | 100.0 | |

Top Positions (% TNA)

| | Sector GICS | Geographic Location | Fund | Index | Relative |
|----------------------------------|------------------------|---------------------|------|-------|----------|
| BERKSHIRE HATHAWAY INC DEL | Financials | United States | 4.3 | 0.7 | 3.6 |
| ALPHABET INC | Communication Services | United States | 3.6 | 2.3 | 1.3 |
| MICROSOFT CORP | Information Technology | United States | 3.6 | 3.6 | -0.1 |
| AMAZON.COM INC | Consumer Discretionary | United States | 3.4 | 1.9 | 1.5 |
| QUALCOMM INC | Information Technology | United States | 3.2 | 0.2 | 3.0 |
| GALLAGHER (ARTHUR J.) & CO | Financials | United States | 3.1 | 0.1 | 3.0 |
| CANADIAN PACIFIC KANSAS CITY LTD | Industrials | Canada | 2.9 | 0.1 | 2.8 |
| S&P GLOBAL INC | Financials | United States | 2.8 | 0.2 | 2.6 |
| ALIBABA GROUP HOLDING LTD | Consumer Discretionary | China | 2.8 | 0.3 | 2.5 |
| UNITEDHEALTH GROUP INC | Health Care | United States | 2.2 | 0.7 | 1.5 |

Top Overweight Positions (% TNA)

| | Fund | Index | Relative |
|----------------------------------|------|-------|----------|
| BERKSHIRE HATHAWAY INC DEL | 4.3 | 0.7 | 3.6 |
| GALLAGHER (ARTHUR J.) & CO | 3.1 | 0.1 | 3.0 |
| QUALCOMM INC | 3.2 | 0.2 | 3.0 |
| CANADIAN PACIFIC KANSAS CITY LTD | 2.9 | 0.1 | 2.8 |
| S&P GLOBAL INC | 2.8 | 0.2 | 2.6 |
| ALIBABA GROUP HOLDING LTD | 2.8 | 0.3 | 2.5 |
| AIRBUS SE | 2.0 | 0.1 | 1.9 |
| DANAHER CORP | 2.0 | 0.3 | 1.7 |
| HDFC BANK LTD | 1.7 | 0.1 | 1.6 |
| NORFOLK SOUTHERN CORP | 1.6 | 0.1 | 1.6 |

Positions Concentration (% TNA)

| | Fund | Index |
|--------|------|-------|
| Top 10 | 31.9 | 18.6 |
| Top 20 | 50.1 | 24.4 |
| Top 50 | 79.5 | 35.1 |

Definition of terms:

Index: the index used in the positioning tables on this page is the index defined in the Performance Comparator(s) section on page 2 of this factsheet.

Top Positions: those companies in which the largest percentages of the fund's total net assets are effectively invested. Positions in other funds - including ETFs (Exchange Traded Funds) - can appear in this table, but index derivatives form part of an "Other Index / Unclassified" category which will not appear.

Top Overweight & Underweight Positions: those positions which have the largest active weight relative to the index. Positions in other funds - including ETFs (Exchange Traded Funds) - can appear in this table, but index derivatives form part of an "Other Index / Unclassified" category which will not appear.

Positions Concentration: illustrates the weight of the top 10, 20 and 50 positions in the fund and the weight of the top 10, 20 and 50 positions in the index. It does not attempt to show the coincidence of security ownership between fund and index.

The **sector/industry classification** used (ie GICS, ICB, TOPIX or IPD) varies by fund. Full descriptions of GICS, ICB, TOPIX and IPD can be found in the glossary.

Figures may not always sum to totals due to rounding

Market Capitalisation Exposure (% TNA)

| EUR | Fund | Index | Relative |
|----------------------------------|-------------|--------------|----------|
| >10bn | 89.2 | 92.3 | -3.1 |
| 5-10bn | 3.5 | 5.3 | -1.8 |
| 1-5bn | 1.1 | 1.7 | -0.6 |
| 0-1bn | 0.0 | 0.0 | 0.0 |
| Total Market Cap Exposure | 93.8 | 99.4 | |
| Index / Unclassified | 0.8 | 0.6 | |
| Total Equity Exposure | 94.6 | 100.0 | |

Regional Exposure (% TNA)

| | Fund | Index | Relative |
|--------------------------------|-------------|--------------|----------|
| North America | 65.7 | 64.8 | 0.9 |
| Emerging Markets | 11.3 | 10.9 | 0.4 |
| Europe (ex-UK) | 9.7 | 12.4 | -2.7 |
| Japan | 4.3 | 5.5 | -1.2 |
| UK | 3.1 | 3.6 | -0.5 |
| Asia Pacific (ex-Japan) | 0.5 | 2.8 | -2.3 |
| Total Regional Exposure | 94.6 | 100.0 | |
| Other Index / Unclassified | 0.0 | 0.0 | |
| Total Equity Exposure | 94.6 | 100.0 | |

Attribution

Performance attribution is produced in the currency shown below. For funds with multiple share classes, the attribution return reflects the aggregate performance across all the share classes. It may therefore deviate from the published return for a particular share class. When using the analysis for hedged share classes, please consider that the attribution is shown before the impact of hedging.

The contributions shown in the tables are before the impact of charges. If charges are applied, their effect is captured in the "Other" category in the tables and will also be reflected in the fund return.

All investments, including derivatives, linked to a particular issuing company have been combined to form a total percentage for each issuing company.

The sector/industry and geographic contribution tables (where relevant) display a maximum of eleven individual entries. Where applicable, only top five and bottom five are listed, with the remaining contribution shown in the "Other Sectors" or "Others" category.

Currency of attribution US Dollar (USD)

One month relative return (%) -0.97

Position Contribution (%)

1 month

| | Average Relative Weight | Relative Performance Contribution | | Average Relative Weight | Relative Performance Contribution |
|---------------------------|-------------------------|-----------------------------------|----------------------------|-------------------------|-----------------------------------|
| Top Contributors | | | Top Detractors | | |
| ALIBABA GROUP HOLDING LTD | 2.2 | 0.38 | GALLAGHER (ARTHUR J.) & CO | 3.0 | -0.18 |
| QUALCOMM INC | 2.7 | 0.21 | HCA HEALTHCARE INC | 1.1 | -0.17 |
| APPLE INC | -2.9 | 0.08 | S&P GLOBAL INC | 2.7 | -0.15 |
| META PLATFORMS INC | 0.8 | 0.07 | HDFC BANK LTD | 1.7 | -0.12 |
| ALPHABET INC | 1.2 | 0.07 | NVIDIA CORP | -1.7 | -0.11 |
| AIRBNB INC | 0.4 | 0.06 | BOSTON SCIENTIFIC CORP | 1.5 | -0.11 |
| EXPEDIA GROUP INC | 1.0 | 0.06 | AXIS BANK LTD | 1.4 | -0.10 |
| AUTOLIV INC | 0.5 | 0.06 | KENVUE INC | 0.6 | -0.09 |
| BUNGE LIMITED | 0.5 | 0.05 | ASML HOLDING NV | 1.7 | -0.08 |
| MERCK & CO INC | -0.4 | 0.05 | HONEYWELL INTL INC | 0.8 | -0.08 |

Positions in other funds - including ETFs (Exchange Traded Funds) - can appear in this table, but index derivatives form part of an "Index / Unclassified" category which will appear in the table(s) below when relevant.

Sector/Industry Contribution (%)

1 month

Contributions To Relative Return

| | Average Relative Weight | Security Selection | Sector/ Industry Selection | Total Relative Contribution |
|-----------------------------|-------------------------|--------------------|----------------------------|-----------------------------|
| Sector GICS | | | | |
| Consumer Discretionary | -0.7 | 0.44 | 0.10 | 0.54 |
| Communication Services | -1.9 | 0.00 | 0.16 | 0.16 |
| Information Technology | -1.4 | 0.00 | 0.10 | 0.11 |
| Utilities | -1.7 | 0.01 | 0.04 | 0.05 |
| Real Estate | -2.1 | -0.01 | 0.01 | 0.00 |
| Health Care | -2.9 | -0.19 | 0.17 | -0.03 |
| Consumer Staples | -0.8 | -0.04 | -0.02 | -0.06 |
| Energy | -4.0 | 0.04 | -0.12 | -0.08 |
| Materials | -0.6 | -0.08 | -0.08 | -0.16 |
| Industrials | 0.6 | -0.29 | 0.10 | -0.19 |
| Financials | 9.2 | -1.18 | 0.09 | -1.09 |
| Total Primary Assets | -6.4 | -1.30 | 0.54 | -0.76 |
| Other* | 6.4 | | | -0.22 |
| Total | 0.0 | | | -0.97 |

Geographic Contribution (%)

1 month

Contributions To Relative Return

| | Average Relative Weight | Security Selection | Geographic Selection | Total Relative Contribution |
|-----------------------------|-------------------------|--------------------|----------------------|-----------------------------|
| | | | | |
| China | -0.7 | 0.23 | -0.03 | 0.21 |
| Denmark | -0.7 | 0.00 | 0.02 | 0.02 |
| Sweden | -0.8 | 0.00 | 0.02 | 0.02 |
| Mexico | -0.3 | 0.01 | 0.00 | 0.01 |
| Spain | -0.6 | 0.00 | 0.01 | 0.01 |
| United States | -0.6 | -0.08 | 0.01 | -0.08 |
| Netherlands | 1.1 | -0.08 | -0.01 | -0.09 |
| Japan | -1.0 | -0.12 | 0.01 | -0.11 |
| Korea (South) | 0.6 | -0.13 | 0.02 | -0.11 |
| India | 2.3 | -0.22 | -0.01 | -0.23 |
| Others | -5.6 | -0.26 | -0.14 | -0.40 |
| Total Primary Assets | -6.4 | -0.66 | -0.10 | -0.76 |
| Other* | 6.4 | | | -0.22 |
| Total | 0.0 | | | -0.97 |

*Other includes portfolio components not already listed such as cash, expenses and other miscellaneous items.

ESG Metrics

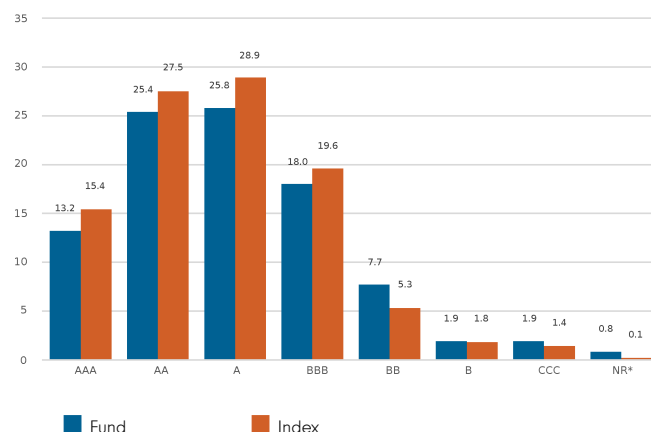
The factsheet is a snapshot of the portfolio at the date indicated above. ESG ratings distribution may vary over time. Representation of this data is for informational purposes only. If the SFDR classification is shown as 6 below then this fund does not promote environmental or social characteristics nor does it have a sustainable investment objective. If it is shown as 8, the fund promotes environmental or social characteristics. If it is shown as 9, the fund has a sustainable investment objective. Product-specific information can be found on our website at www.fidelityinternational.com

Sustainability Characteristics (31.07.2023)

| | Fund | Index |
|---|-------------|--------------|
| MSCI ESG Fund Rating (AAA-CCC) | A | N/R |
| Weighted Average Carbon Intensity (tCo2e/\$M Revenue) | 84,5 | 138,9 |
| SFDR Classification | 8 | N/A |

N/A - Not Applicable
 N/R - Not Rated

MSCI Ratings Distribution % (31.07.2023)



ESG Fund rating based on holding as at 31.05.23 with 97.5% security coverage. Carbon intensity data based on holdings as at 31.07.23 with 93.8% security coverage.

Glossary

MSCI ESG Fund Rating: This shows the fund's ESG rating based on the Quality Scores given to the fund by MSCI. This ranges from AAA, AA (Leader), A, BBB, BB (Average) to B, CCC (Laggard). To be included in MSCI ESG Fund Ratings, 65% of the fund's gross weight must come from covered securities (and excluding cash), the fund's holdings date must be less than one year old and the fund must have at least ten securities.

Weighted Average Carbon Intensity: is calculated as the sum of each portfolio weight multiplied by the Co2e per \$M of Revenue of each holding. This metric provides a snapshot of the fund's exposure to carbon-intensive companies and includes scope 1 and scope 2 carbon emissions. For carbon data, the coverage of underlying securities must be over 50% for data to be shown.

SFDR Classification: Shows the classification given to each fund as part of the EU Sustainable Finance Disclosure Regulation (SFDR). Article 9 funds aim to achieve an ESG outcome and are products with ESG objectives. Article 8 funds focus on promoting ESG characteristics and this must be a primary focus of the product. Article 6 funds integrate sustainability risks into investment analysis and decision-making, without the funds promoting environmental or social characteristics or having sustainable investments as their objective.

MSCI Ratings Distribution: This shows the percentage distribution of ESG ratings in the fund, based on the Net Asset Value of holdings excluding cash, liquidity funds, derivatives and Exchange Traded Funds.

Information on sustainability-related aspects is provided pursuant to SFDR at <https://www.fidelity.lu/sfdr-entity-disclosures>

Disclaimer

ESG Rating Source: ©2023 MSCI ESG Research LLC. Reproduced by permission, no further distribution. MSCI ESG Research LLC and its affiliates (the "ESG Parties"), obtain information from sources they consider reliable, none of the ESG Parties warrants or guarantees the originality, accuracy and/or completeness of any data herein. None of the ESG Parties makes any express or implied warranties of any kind, and the ESG Parties hereby expressly disclaim all warranties of merchantability and fitness for a particular purpose, with respect to any data herein. None of the ESG Parties shall have any liability for any errors or omissions in connection with any data herein. Further, without limiting any of the foregoing, in no event shall any of the ESG Parties have any liability for any direct, indirect, special, punitive, consequential or any other damages (including lost profits) even if notified of the possibility of such damages. The information is as at the date of production based on data provided by MSCI. There may be timing differences between the date at which data is captured and reported. For more up to date information, you can visit <https://www.msci.com/esg-fund-ratings>

Carbon Data Source: Data provided by ISS ESG. All rights in the information provided by Institutional Shareholder Services Inc. and its affiliates (ISS) reside with ISS and/or its licensors. ISS makes no express or implied warranties of any kind and shall have no liability for any errors, omissions or interruptions in or in connection with any data provided by ISS. The information is as at the date of production based on carbon data provided by ISS. There may be timing differences between the date at which data is captured and reported.

SFDR Classification is assigned by Fidelity in line with the EU Sustainable Financial Disclosure Regulation.

Glossary / additional notes

Volatility & Risk

Annualised volatility: a measure of how variable returns for a fund or comparative market index have been around their historical average (also known as “standard deviation”). Two funds may produce the same return over a period. The fund whose monthly returns have varied less will have a lower annualised volatility and will be considered to have achieved its returns with less risk. The calculation is the standard deviation of 36 monthly returns presented as an annualised number. Volatility for funds and indices are calculated independently of each other.

Relative volatility: a ratio calculated by comparing the annualised volatility of a fund to the annualised volatility of a comparative market index. A value greater than 1 indicates the fund has been more volatile than the index. A value less than 1 shows the fund has been less volatile than the index. A relative volatility of 1.2 means the fund has been 20% more volatile than the index, while a measure of 0.8 would mean the fund has been 20% less volatile than the index.

Sharpe ratio: a measure of a fund's risk-adjusted performance, taking into account the return on a risk-free investment. The ratio allows an investor to assess whether the fund is generating adequate returns for the level of risk it is taking. The higher the ratio, the better the risk-adjusted performance has been. If the ratio is negative, the fund has returned less than the risk-free rate. The ratio is calculated by subtracting the risk-free return (such as cash) in the relevant currency from the fund's return, then dividing the result by the fund's volatility. It is calculated using annualised numbers.

Annualised alpha: the difference between a fund's expected return (based on its beta) and the fund's actual return. A fund with a positive alpha has delivered more return than would be expected given its beta.

Beta: a measure of a fund's sensitivity to market movements (as represented by a market index). The beta of the market is 1.00 by definition. A beta of 1.10 shows that the fund could be expected to perform 10% better than the index in up markets and 10% worse in down markets, assuming all other factors remain constant. Conversely, a beta of 0.85 indicates that the fund could be expected to perform 15% worse than the market return during up markets and 15% better during down markets.

Annualised tracking error: a measure showing how closely a fund follows the index to which it is being compared. It is the standard deviation of the fund's excess returns. The higher the fund's tracking error, the higher the variability of fund returns around the market index.

Information ratio: a measure of a fund's effectiveness in generating excess return for the level of risk taken. An information ratio of 0.5 shows the fund has delivered an annualised excess return equivalent to half the value of the tracking error. The ratio is calculated by taking the fund's annualised excess return and dividing it by the fund's tracking error.

R²: a measure representing the degree to which a fund's return can be explained by the returns of a comparative market index. A value of 1 signifies the fund and index are perfectly correlated. A measure of 0.5 means only 50% of the fund's performance can be explained by the index. If the R² is 0.5 or lower, the fund's beta (and therefore its alpha too) is not a reliable measure (due to a low correlation between fund and index).

Ongoing charges

The ongoing charges figure represents the charges taken from the fund over a year. It is calculated at the fund's financial year end and may vary from year to year. For classes of funds with fixed ongoing charges, this may not vary from year to year. For new classes of funds or classes undergoing corporate actions (eg amendment to annual management charge), the ongoing charges figure is estimated until the criteria are met for an actual ongoing charges figure to be published.

The types of charges included in the ongoing charges figure are management fees, administration fees, custodian and depositary fees and transaction charges, shareholder reporting costs, regulatory registration fees, Directors fees (where applicable) and bank charges.

It excludes: performance fees (where applicable); portfolio transaction costs, except in the case of an entry/exit charge paid by the fund when buying or selling units in another collective investment undertaking.

For more information about charges (including details of the fund's financial year end), please consult the charges section in the most recent Prospectus.

Historic yield

The historic yield for a fund is based on its dividends declared over the preceding 12 months. It is calculated by summing the dividend rates declared in that period, divided by the price as at the date of publication. Declared dividends may not be confirmed and may be subject to change. Where 12 months of declared dividend data does not exist a historic yield will not be published.

Sector/industry classification

GICS: The Global Industry Classification Standard is a taxonomy mainly used across MSCI and S&P indices in which each company is assigned by its principal business activity to one of 11 sectors, 24 industry groups, 69 industries and 158 sub-industries. More information is available at <http://www.msci.com/gics>

ICB: The Industry Classification Benchmark is a taxonomy mainly used across FTSE Russell indices in which each company is assigned by its principal business activity to one of 11 industries, 20 supersectors, 45 sectors and 173 subsectors. More information is available at <https://www.ftserussell.com/data/industry-classification-benchmark-icb>

TOPIX: Tokyo stock Price Index, commonly known as TOPIX, is a stock market index for the Tokyo Stock Exchange (TSE) in Japan, tracking all domestic companies of the exchange's First Section. It is calculated and published by the TSE.

IPD means the Investment Property Databank who are a provider of performance analysis and benchmarking services for investors in real estate. IPD UK Pooled Property Funds Index - All Balanced Funds is a component of the IPD Pooled Funds Indices which is published quarterly by IPD.

Independent Assessment

Scope Fund Rating: The rating measures how well a fund has balanced risk and reward relative to its peers. The rating is based solely on performance for funds with a five year track record. Funds with a shorter history also undergo qualitative assessment. For example, this may include looking at management style. The rating scale is A = very good, B = good, C = average, D = below average and E = poor.

Morningstar Star Rating for Funds: The rating measures how well a fund has balanced risk and reward relative to its peers. Star ratings are strictly based on past performance and Morningstar suggests investors use them to identify funds that are worthy for further research. The top 10% of funds in a category will receive a 5-star rating and the next 22.5% receive a 4-star rating. Only ratings of 4 or 5 stars are displayed on the factsheet.

Primary share class: is identified by Morningstar when the analysis calls for only one share class per fund to be in the peer group. It is the share class Morningstar recommends as the best proxy for the portfolio for the relevant market and category/GIF combination. In most cases the share class chosen will be the most retail version (based upon actual management charge, inception date, distribution status, currency and other factors) unless a share class that is less retail focused has a much longer track record. It is different to the oldest share class data point in that it is on an available for sale level and not all markets will have the oldest share class for sale in that region. The Primary share class is also based on category so each available for sale/category combination for the fund will have its own primary share class.

Portfolio Turnover Rate (PTR) and Portfolio Turnover Cost (PTC), where shown: SRDII does not define a methodology for these values; ours is as follows: **PTR** = (purchases of securities + sales of securities) minus (subscriptions of units + redemptions of units), divided by average fund value over the prior 12 months multiplied by 100. Any funds' trading in Fidelity Institutional Liquidity Funds is excluded from the PTR calculation. **PTC** = PTR (capped at 100%) x transaction cost, where transaction cost is calculated as ex-post (i.e. prior 12 months) MiFID disclosure of portfolio transaction costs minus implicit costs.



Important Information

This is a marketing communication. This information must not be reproduced or circulated without prior permission.

Fidelity only offers information on products and services and does not provide investment advice based on individual circumstances, other than when specifically stipulated by an appropriately authorised firm, in a formal communication with the client.

Fidelity International refers to the group of companies which form the global investment management organisation that provides information on products and services in designated jurisdictions outside of North America. This communication is not directed at, and must not be acted upon by persons inside the United States and is otherwise only directed at persons residing in jurisdictions where the relevant funds are authorised for distribution or where no such authorisation is required.

Unless otherwise stated all products are provided by Fidelity International, and all views expressed are those of Fidelity International. Fidelity, Fidelity International, the Fidelity International logo and F symbol are registered trademarks of FIL Limited. FIL Limited assets and resources as at 28/02/2023 - data is unaudited. Research professionals include both analysts and associates. The performance figures shown do not take into account the fund's Initial Charge. If you took an initial charge of 5.25% from an investment, this is the equivalent of reducing a growth rate of 6% per annum over 5 years to 4.9%. This is the highest initial charge applicable, if the initial charge you pay is less than 5.25%, the impact on the overall performance will be less.

Fidelity Funds "FF" is an open-ended investment company (UCITS) established in Luxembourg with different classes of shares. FIL Investment Management (Luxembourg) S.A. reserves the right to terminate the arrangements made for the marketing of the sub-fund and/ or its shares in accordance with Article 93a of Directive 2009/65/EC and Article 32a of Directive 2011/61/EU. Prior notice of this cessation will be made in Luxembourg.

Morningstar annualised growth rates, total return, sector median performance and ranks - Data Source - © 2023 Morningstar, Inc. All Rights Reserved. The information contained herein: (1) is proprietary to Morningstar and/or its content providers; (2) may not be copied or distributed; and (3) is not warranted to be accurate, complete or timely. Neither Morningstar nor its content providers are responsible for any damages or losses arising from any use of this information.

This share class is registered and distributed in the following locations: Austria, Bahrain, Belgium, Chile, France, Germany, Italy, Liechtenstein, Luxembourg, Netherlands, Oman, Qatar, Spain, Switzerland, United Kingdom.

We recommend that you obtain detailed information before taking any investment decision on the basis of the current prospectus and KID (key information document), along with the current annual and semi-annual reports free of charge through <https://www.fidelityinternational.com>, from our distributors, from your financial advisor or from the branch of your bank and from our European Service Centre in Luxembourg, FIL (Luxembourg) S.A., 2a, rue Albert Borschette BP 2174 L-1021 Luxembourg. Issued by FIL (Luxembourg) S.A., authorised and supervised by the CSSF (Commission de Surveillance du Secteur Financier). Investors/ potential investors can obtain information on their respective rights regarding complaints and litigation on your local Fidelity website which can be accessed via the following link <https://www.fidelityinternational.com> (Products & services) by selecting your country of residence. All documentation and information will be in the local or an accepted European language of the country selected.

Documentation can also be obtained from the following paying agents/distributors: **Austria** - UniCredit Bank Austria AG, Schottengasse 6-8, 1010 Vienna., **Liechtenstein** - VP Bank AG, Aulestrasse 6, 9490 Vaduz., **Switzerland** - BNP Paribas, Paris, succursale de Zurich, Selnastrasse 16, 8002 Zurich.

Chile : Neither the issuer nor the securities have been registered with the Superintendencia de Valores y Seguros pursuant to law no. 18,045, the Ley de Mercado de Valores, and regulations thereunder. This document does not constitute an offer of, or an invitation to subscribe for or purchase, the securities in the republic of Chile, other than to individually identified buyers pursuant to a private offering within the meaning of article 4 of the Ley de Mercado de Valores (an offer that is not addressed to the public at large or to a certain sector or specific group of the public).

France : Issued by FIL Gestion, a portfolio management company approved by the AMF under the number GP03-004, 21 avenue Kleber, 75116 Paris.

Germany : For German Wholesale clients issued by FIL Investments Services GmbH, Kastanienhöhe 1, 61476 Kronberg im Taunus. For German Institutional clients issued by FIL (Luxembourg) S.A., 2a, rue Albert Borschette BP 2174 L-1021 Luxembourg. For German Pension clients issued by FIL Finance Services GmbH, Kastanienhöhe 1, 61476 Kronberg im Taunus.

Netherlands : The fund is authorised to offer participation rights in The Netherlands pursuant to article 2:66 (3) in conjunction with article 2:71 and 2:72 Financial Supervision Act.

Spain : Fidelity Funds and Fidelity Active Strategy (FAST) are open-ended collective investment schemes incorporated in Luxembourg. The distributing and depositary entities are, respectively, FIL (Luxembourg) S.A. and Brown Brothers Harriman (Luxembourg) S.C.A. Fidelity Funds and FAST are registered for marketing in Spain in the register of Foreign Collective Investment Undertakings of the CNMV under registration numbers 124 and 649 respectively, where detailed information on the local distributors can be obtained.

Switzerland : Fidelity undertakes the financial services of purchasing and/or selling financial instruments within the meaning of the Financial Services Act ("FinSA"). Fidelity is not required to assess the appropriateness and suitability under FinSA. Issued by FIL Investment Switzerland AG.

C504925 CL1305901/NA English 28303 T1a