

Strategy

The fund primarily invests in high yield corporate bonds of European domiciled issuers, diversified across a number of countries and sectors. Emphasis is placed on bottom up name selection, due diligence and ensuring adequate liquidity and diversification due to the asymmetric nature of high yield bond returns. The manager also retains a degree of flexibility to invest in out-of-index strategies as a means of adding performance but adherence to the investment objective remains imperative. The fund is managed according to Fidelity's active philosophy and approach to fixed income investing. This is team-based, but led by the Portfolio Manager to generate attractive risk-adjusted returns through combining multiple, diversified investment positions advised by in-house fundamental credit research, quantitative modelling and specialist traders.

Objectives & Investment Policy

Objective: The fund aims to achieve capital growth over time and provide a high level of income.

Investment Policy: The fund invests at least 70% of its assets, in high-yielding below investment grade debt securities of issuers that are headquartered, or do most of their business, in Western, Central and Eastern Europe (including Russia), including emerging markets. These securities will be subject to high risk, will not be required to meet a minimum rating standard, although, most, but not all, will be rated for creditworthiness by an internationally recognised rating agency. The fund may also invest in money market instruments on an ancillary basis.

The fund invests at least 50% of its assets in securities of issuers with favourable environmental, social and governance (ESG) characteristics.

The fund may invest in the following assets according to the percentages indicated: hybrids and contingent convertible (CoCo) bonds: less than 30%, with CoCos less than 20%

The fund may invest in other subordinated financial debt and preference shares.

The fund's exposure to distressed securities is limited to 10% of its assets.

Investment Process: In actively managing the fund, the Investment Manager uses in-house research and investment capabilities to identify suitable opportunities across bond issuers, sectors, geographies, and security types. This may include an assessment of bond issuers' creditworthiness, macroeconomic factors, and valuations. The Investment Manager also considers ESG characteristics when assessing investment risks and opportunities. In determining favourable ESG characteristics, the Investment Manager takes into account ESG ratings provided by Fidelity or external agencies. Through the investment management process, the Investment Manager aims to ensure that investee issuers follow good governance practices.

The fund adheres to the Fidelity Sustainable Investing Framework standards. For more information, see "Sustainable Investing and ESG Integration" and the Sustainability Annex.

Derivatives and Techniques: The fund may use derivatives for hedging, efficient portfolio management and investment purposes.

Benchmark: ICE BofA Global High Yield European Issuers Constrained (Level 4 20% Cap) Index, an index that does not take into account ESG characteristics. Used for: investment selection, risk monitoring, and performance comparison.

Fund Facts

Launch date: 26.06.00

Portfolio manager: Andrei Gorodilov, James Durance, Peter Khan

Appointed to fund: 01.02.13, 01.04.17, 01.01.19

Years at Fidelity: 20, 11, 24

Fund size: \$ 2,660m

Fund reference currency: Euro (EUR)

Fund domicile: Luxembourg

Fund legal structure: SICAV

Management company: FIL Investment Management (Luxembourg) S.A.

Capital guarantee: No

Portfolio Turnover Cost (PTC): 0.00%

Portfolio Turnover Rate (PTR): 50.02%

Share Class Facts

Other share classes may be available. Please refer to the prospectus for more details.

Launch date: 01.04.15

NAV price in share class currency: 15.34

ISIN: LU1207409209

SEDOL: BWDPMBO

WKN: A14Q8Y

Bloomberg: FFEYAUH LX

Dealing cut-off: 15:00 UK time (normally 16:00 Central European Time)

Distribution type: Accumulating

Ongoing Charges Figure (OCF) per year: 0.90% (30.04.23)

OCF takes into account annual management charge per year: 0.65%

Risk Indicator



The risk indicator assumes you keep the product for 3 years. The actual risk can vary significantly if you cash in at the early stage and you may get back less.

The summary risk indicator is a guide to the level of risk of this product compared to other products. It shows how likely it is that the product will lose money because of movements in the markets or because we are not able to pay you. We have classified this product as 3 out of 7, which is a medium risk class. This rates the potential losses from future performance at a medium level, and poor market conditions could impact the capacity to pay you. Returns may increase or decrease as a result of currency fluctuations. This product does not include any protection from future market performance so you could lose some or all of your investment. If FIL Investment Management (Luxembourg) S.A. is not able to pay you what is owed, you could lose your entire investment.

Important Information

The value of your investment may fall as well as rise and you may get back less than you originally invested. The use of financial derivative instruments may result in increased gains or losses within the fund. Liquidity is a measure of how easily an investment can be converted into cash. Under certain market conditions assets may be more difficult to value or sell at a desired price. This could affect the fund's ability to meet redemptions in a timely manner. There is a risk that the issuers of bonds may not be able to repay the money they have borrowed or make interest payments. When interest rates rise, bonds may fall in value. Rising interest rates may cause the value of your investment to fall. The investment policy of this fund means it can be more than 35% invested in Government and public securities. These can be issued or guaranteed by other countries and Governments. For a full list please refer to the fund's prospectus. The Investment Manager's focus on securities of issuers which maintain favourable ESG characteristics or that are sustainable investments may affect the fund's investment performance favourably or unfavourably in comparison to similar funds without such focus. Funds are subject to charges and expenses. Charges and expenses reduce the potential growth of your investment. This means you could get back less than you paid in. The costs may increase or decrease as a result of currency and exchange rate fluctuations. Please refer to the Prospectus and KID of the fund before making any final investment decisions. When referring to sustainability - related aspects of the promoted fund, the decision to invest should take into account all characteristics or objectives of the promoted fund as detailed in the Prospectus. Information on sustainability-related aspects is provided pursuant to SFDR at <https://www.fidelity.lu/sfdr-entity-disclosures>.

Past performance does not predict future returns. Currency hedging is used to substantially reduce the risk of losses from unfavourable exchange rate movements on holdings in currencies that differ from the dealing currency. The investment which is promoted concerns the acquisition of units or shares in a fund, and not in a given underlying asset owned by the fund.

Performance Comparator(s)

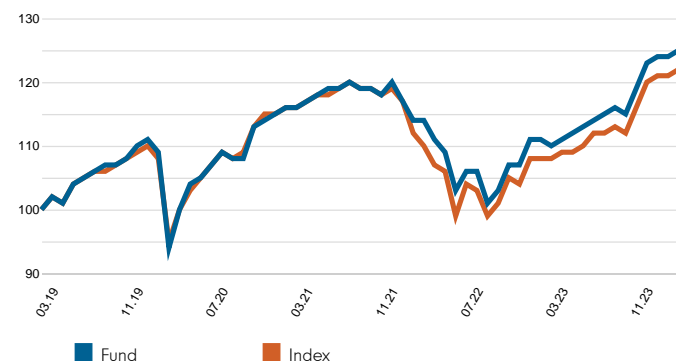
Market index from 01.04.15

ICE BofA Q843 Custom Index Hedged to USD

Market index is for comparative purposes only unless specifically referenced in the Objectives & Investment Policy on page 1. The same index is used in the positioning tables on this factsheet.

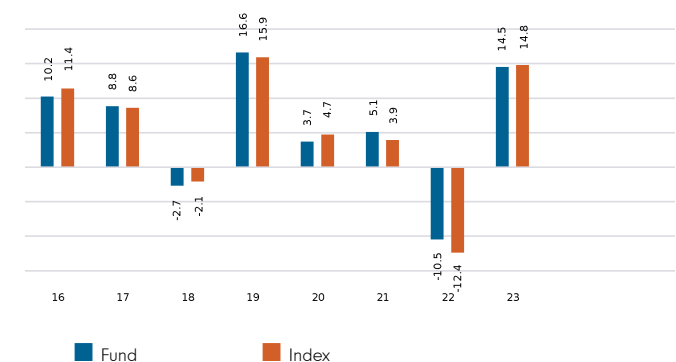
Where the effective date for the current market index is after the share class launch date, full history is available from Fidelity.

Cumulative performance in USD (rebased to 100)



Performance is shown for the last five years (or since launch for funds launched within that period).

Performance for calendar years in USD (%)



Performance to 31.03.24 in USD (%)

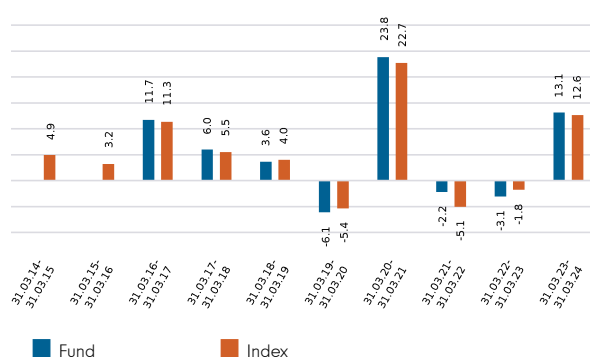
| | 1m | 3m | YTD | 1yr | 3yr | 5yr | Since 01.04.15* |
|---|-----|-----|-----|------|-----|------|-----------------|
| Fund cumulative growth | 0.3 | 1.6 | 1.6 | 13.1 | 7.2 | 24.6 | 53.4 |
| Index cumulative growth | 0.2 | 1.6 | 1.6 | 12.6 | 4.9 | 21.7 | 53.2 |
| Fund annualised growth | - | - | - | 13.1 | 2.3 | 4.5 | 4.9 |
| Index annualised growth | - | - | - | 12.6 | 1.6 | 4.0 | 4.9 |
| Ranking within Peer Group Universe | | | | | | | |
| Total number of funds | - | - | - | - | - | - | - |
| Quartile ranking** | - | - | - | - | - | - | - |

Source of fund performance and volatility and risk measures is Fidelity. Performance is excluding initial charge. Basis: nav-nav with income reinvested, in USD, net of fees. If you took an initial charge of 5.25% from an investment, this is the equivalent of reducing a growth rate of 6% per annum over 5 years to 4.9%. This is the highest initial charge applicable, if the initial charge you pay is less than 5.25%, the impact on the overall performance will be less. Market indices are sourced from RIMES and other data is sourced from third-party providers such as Morningstar.

*Performance commencement date.

**Quartile rank is for the fund's primary share class as identified by Morningstar, which may be different than the share class detailed in this factsheet and refers to performance over time rated on a scale of 1-4. A ranking of 1 indicates that the item being ranked is in the top 25% of the sample and so on. Rankings are based on a performance record that is included in the Peer Group Universe. In line with Investment Association methodology, this record may include a track record extension from a legacy share class and the record may not be the same class of this factsheet. Quartile ranking is an internal Fidelity International calculation. Ranking may vary by share class.

Performance for 12 month periods in USD (%)



Volatility & Risk

| | | | |
|---------------------------------|-------|-------------------------------|------|
| Annualised Volatility: fund (%) | 7.29 | Annualised Alpha | 0.85 |
| Relative Volatility | 0.94 | Beta | 0.92 |
| Sharpe Ratio: fund | -0.05 | Annualised Tracking Error (%) | 1.64 |
| Sharpe Ratio: index | -0.14 | Information Ratio | 0.46 |
| | | R ² | 0.96 |

Calculated using month-end data points. Definitions of these terms can be found in the Glossary section of this factsheet.

Introduction

This factsheet contains information about the composition of the fund at a particular point in time. It aims to help you understand how the manager has positioned the fund to meet its objectives. Each table shows a different breakdown of the fund's investments. The index used in the positioning tables is the index defined in the Performance Comparator(s) section on page 2 of this factsheet.

Portfolio Characteristics

| | Fund | Index | Relative |
|---------------------------------------|------|-------|----------|
| Distribution Yield (%) | 5.0 | - | - |
| Effective Duration | 2.7 | 2.9 | -0.1 |
| Running Yield (%) | 6.0 | 5.6 | 0.5 |
| Yield to Maturity (%) | 7.4 | 7.5 | 0.0 |
| Spread Duration | 2.5 | 3.2 | -0.7 |
| Option Adjusted Spread (Basis Points) | 347 | 379 | -32 |
| Duration Times Spread (DTS) | 1011 | 1088 | -77 |
| Number of Holdings | 296 | - | - |
| Number of Names | 159 | - | - |
| Average Credit Rating (Exponential) | BB- | B+ | n / a |
| Average Credit Rating (Linear) | BB- | BB- | n / a |
| Average Maturity (years) | 12.1 | 14.2 | -2.2 |
| Average Coupon (%) | 5.5 | 5.3 | 0.2 |

Definitions of these characteristics can be found in the Glossary section of this factsheet.

Derivatives Exposure

| | Long % | Short % | Net % | Gross % |
|------------------------------|--------|---------|-------|--------------|
| Bond / Interest Rate Futures | 7.12 | -0.80 | 6.32 | 7.93 |
| Interest Rate Swaps | 5.69 | 0.00 | 5.69 | 5.69 |
| Inflation Indexed Swaps | 0.00 | 0.00 | 0.00 | 0.00 |
| Credit Default Swaps | 2.55 | 0.00 | 2.55 | 2.55 |
| Index Credit Default Swaps | 0.00 | -2.41 | -2.41 | 2.41 |
| Mortgage To Be Announced | 0.00 | 0.00 | 0.00 | 0.00 |
| TOTAL | | | | 18.58 |

Exposure as a percent of total net assets. Excludes FX forwards.

Asset Allocation

| | Security Holdings (excl. Derivatives) | | | Contribution to Duration (incl. Derivatives) | | | Contribution to Duration Times Spread (incl. Derivatives) | | |
|---|---------------------------------------|---------------|----------|--|------------|-------------|---|-------------|------------|
| | Fund | Index | Relative | Fund | Index | Relative | Fund | Index | Relative |
| Treasury | 0.00 | 0.00 | 0.00 | 0.0 | 0.0 | 0.0 | 0 | 0 | 0 |
| Index Linked | 0.00 | 0.00 | 0.00 | 0.0 | 0.0 | 0.0 | 0 | 0 | 0 |
| Investment Grade - Sovs Supras & Agencies | 1.08 | 0.56 | 0.52 | 0.0 | 0.0 | 0.0 | 7 | 9 | -1 |
| Investment Grade - Financials | 3.94 | 0.00 | 3.94 | 0.1 | 0.0 | 0.1 | 32 | 0 | 32 |
| Investment Grade - Non-Financials | 2.26 | 1.08 | 1.17 | 0.1 | 0.0 | 0.1 | 17 | 7 | 10 |
| Investment Grade - ABS | 0.22 | 0.00 | 0.22 | 0.0 | 0.0 | 0.0 | 2 | 0 | 2 |
| Investment Grade - Emerging Markets | 0.15 | 0.30 | -0.15 | 0.0 | 0.0 | 0.0 | 3 | 4 | -1 |
| High Yield | 86.60 | 97.91 | -11.31 | 2.0 | 2.8 | -0.7 | 918 | 1065 | -147 |
| Index Credit Default Swaps | 0.00 | 0.00 | 0.00 | 0.0 | 0.0 | 0.0 | 0 | 0 | 0 |
| Other | 0.64 | 0.15 | 0.49 | 0.0 | 0.0 | 0.0 | 16 | 4 | 12 |
| Interest Rate Derivatives | 0.00 | 0.00 | 0.00 | 0.0 | 0.0 | 0.0 | 0 | 0 | 0 |
| FX / Derivative P&L | -0.44 | 0.00 | -0.44 | 0.5 | 0.0 | 0.5 | 15 | 0 | 15 |
| Cash | 5.55 | 0.00 | 5.55 | 0.0 | 0.0 | 0.0 | 0 | 0 | 0 |
| Rounding adjustment | 0.00 | 0.00 | - | 0.0 | 0.1 | -0.1 | 1 | -1 | 1 |
| TOTAL | 100.00 | 100.00 | - | 2.7 | 2.9 | -0.1 | 1011 | 1088 | -77 |

Security Holdings as a percent of total net assets. Contribution to duration (CTD) and contribution to duration-times-spread (DTS) are in the appropriate units of measure. CTD and DTS include the effect of derivatives. 'FX / Derivative P&L' includes collateral balances with counterparties arising from derivatives used in the fund (this can lead to a negative balance). 'Index linked' includes non-government index linked bonds.

Sector Positioning

| | Security Holdings (excl. Derivatives) | | | Contribution to Duration Times Spread (incl. Derivatives) | | |
|-----------------------------|---------------------------------------|---------------|----------|---|-------------|------------|
| | Fund | Index | Relative | Fund | Index | Relative |
| Treasury | 0.00 | 0.00 | 0.00 | 0 | 0 | 0 |
| Quasi / Sov / Supra / Agncy | 4.64 | 5.11 | -0.47 | 58 | 60 | -3 |
| Agency Mortgages | 0.00 | 0.00 | 0.00 | 0 | 0 | 0 |
| Banks & Brokers | 21.92 | 13.83 | 8.09 | 201 | 117 | 84 |
| Insurance | 0.08 | 1.22 | -1.14 | 2 | 16 | -14 |
| Property | 0.22 | 0.72 | -0.50 | 1 | 12 | -11 |
| Other Financials | 6.79 | 4.35 | 2.44 | 125 | 102 | 22 |
| Basic Industry | 4.87 | 4.71 | 0.16 | 46 | 43 | 3 |
| Capital Goods | 3.59 | 6.96 | -3.37 | 77 | 68 | 9 |
| Consumer Cyclical | 14.93 | 18.23 | -3.31 | 99 | 130 | -31 |
| Consumer Non Cyclical | 5.33 | 9.48 | -4.15 | 30 | 106 | -76 |
| Energy | 5.54 | 2.26 | 3.28 | 74 | 28 | 46 |
| Transportation | 1.45 | 3.90 | -2.44 | 22 | 33 | -11 |
| Technology | 2.12 | 1.51 | 0.60 | 28 | 24 | 4 |
| Communications | 14.19 | 21.15 | -6.96 | 207 | 296 | -88 |
| Industrial Other | 2.71 | 1.75 | 0.96 | 6 | 12 | -6 |
| Utility | 5.14 | 4.82 | 0.33 | 40 | 40 | 0 |
| Covered | 0.00 | 0.00 | 0.00 | 0 | 0 | 0 |
| Non Agency | 0.00 | 0.00 | 0.00 | 0 | 0 | 0 |
| ABS / MBS | 1.36 | 0.00 | 1.36 | 5 | 0 | 5 |
| Unclassified | 0.00 | 0.00 | 0.00 | 0 | 0 | 0 |
| Index Credit Default Swaps | 0.00 | 0.00 | 0.00 | -24 | 0 | -24 |
| Interest Rate Derivatives | 0.00 | 0.00 | 0.00 | 0 | 0 | 0 |
| FX / Derivative P&L | -0.44 | 0.00 | -0.44 | 15 | 0 | 15 |
| Cash | 5.55 | 0.00 | 5.55 | 0 | 0 | 0 |
| Rounding adjustment | 0.01 | 0.00 | - | -1 | 1 | -1 |
| Total | 100.00 | 100.00 | - | 1011 | 1088 | -77 |

Security Holdings as a percent of total net assets. Contribution to duration-times-spread (DTS) in the appropriate unit of measure. DTS includes the effect of derivatives. 'FX / Derivative P&L' includes collateral balances with counterparties arising from derivatives used in the fund (this can lead to a negative balance).

Financial Sector Exposure By Capital Structure

| | Security Holdings (excl. Derivatives) | | | Contribution to Duration Times Spread (incl. Derivatives) | | |
|------------------------|---------------------------------------|--------------|----------|---|------------|-----------|
| | Fund | Index | Relative | Fund | Index | Relative |
| Govt Guaranteed | 0.31 | 0.46 | -0.15 | 2 | 3 | -1 |
| Covered | 0.00 | 0.00 | 0.00 | 0 | 0 | 0 |
| Senior | 13.91 | 11.53 | 2.38 | 124 | 131 | -7 |
| Tier 2 | 3.96 | 7.74 | -3.78 | 32 | 73 | -41 |
| Tier 2 CoCo | 0.00 | 0.00 | 0.00 | 0 | 0 | 0 |
| Tier 1 | 0.00 | 0.00 | 0.00 | 0 | 0 | 0 |
| Additional Tier 1 | 9.70 | 0.22 | 9.48 | 95 | 2 | 93 |
| Insurance Corp Hybrids | 0.08 | 0.00 | 0.08 | 2 | 0 | 2 |
| Other | 2.78 | 2.00 | 0.78 | 91 | 50 | 41 |
| Total | 30.74 | 21.95 | | 346 | 259 | 87 |

Security Holdings as a percent of total net assets. Contribution to duration-times-spread (DTS) in the appropriate unit of measure. DTS includes the effect of derivatives. 'FX / Derivative P&L' includes collateral balances with counterparties arising from derivatives used in the fund (this can lead to a negative balance). The Financials sector includes the following sub-sectors: Banks & Brokers, Insurance & Covered.

Duration Breakdown (By Currency)

| | Fund | | | Index | Relative |
|--------------|-------------|-------------|-------------|-------------|--------------|
| | Nominal | Real | TOTAL | | |
| EUR | 1.52 | 0.00 | 1.52 | 1.83 | -0.31 |
| USD | 0.85 | 0.00 | 0.85 | 0.79 | 0.06 |
| GBP | 0.37 | 0.00 | 0.37 | 0.23 | 0.14 |
| JPY | 0.00 | 0.00 | 0.00 | 0.00 | 0.00 |
| CAD | 0.00 | 0.00 | 0.00 | 0.00 | 0.00 |
| Other | 0.00 | 0.00 | 0.00 | 0.00 | 0.00 |
| TOTAL | 2.74 | 0.00 | 2.74 | 2.85 | -0.11 |

Duration includes the effect of interest rate derivatives such as government bond futures, inflation swaps and interest rate swaps. Nominal Fund refers to the sensitivity to nominal yields, whereas Real Fund refers to the sensitivity to inflation-linked / real yields.

Credit Rating

| | Security Holdings (excl. Derivatives) | | | Contribution to Duration Times Spread (incl. Derivatives) | | |
|---------------------------|---------------------------------------|---------------|----------|---|-------------|------------|
| | Fund | Index | Relative | Fund | Index | Relative |
| AAA/Aaa | 0.00 | 0.00 | 0.00 | 1 | 0 | 1 |
| AA/Aa | 0.00 | 0.00 | 0.00 | 14 | 0 | 14 |
| A | 0.00 | 0.00 | 0.00 | -8 | 0 | -8 |
| BBB/Baa | 7.65 | 1.94 | 5.71 | 70 | 19 | 51 |
| BB/Ba | 48.74 | 55.65 | -6.91 | 453 | 460 | -7 |
| B | 30.46 | 33.50 | -3.04 | 249 | 359 | -111 |
| CCC and Below | 7.40 | 8.81 | -1.42 | 216 | 245 | -29 |
| Not Rated | 0.64 | 0.10 | 0.54 | 16 | 4 | 12 |
| Interest Rate Derivatives | 0.00 | 0.00 | 0.00 | 0 | 0 | 0 |
| FX / Derivative P&L | -0.44 | 0.00 | -0.44 | 0 | 0 | 0 |
| Cash | 5.55 | 0.00 | 5.55 | 0 | 0 | 0 |
| Rounding adjustment | 0.00 | 0.00 | - | 0 | 1 | 0 |
| TOTAL | 100.00 | 100.00 | - | 1011 | 1088 | -77 |

Exposure as a percent of total net assets and contribution to duration-times-spread (DTS). 'FX / Derivative P&L' includes collateral balances with counterparties arising from derivatives used in the fund (this can lead to a negative balance). DTS includes the effect of derivatives. For ratings breakdown, worst of the two best ratings from across S&P, Moody's and Fitch is applied (commonly known as the Basel method).

Maturity Profile (Contribution to Duration)

| | Fund | Index | Relative |
|---------------------|------------|------------|-------------|
| 0 to 1 years | 0.3 | 0.0 | 0.3 |
| 1 to 3 years | 0.5 | 0.5 | 0.0 |
| 3 to 5 years | 0.6 | 0.9 | -0.4 |
| 5 to 10 years | 0.6 | 0.8 | -0.2 |
| 10 to 15 years | 0.1 | 0.1 | 0.0 |
| 15 to 20 years | 0.0 | 0.0 | 0.0 |
| 20 to 25 years | 0.0 | 0.0 | 0.0 |
| 25 to 30 years | 0.5 | 0.3 | 0.2 |
| 30 to 40 years | 0.0 | 0.0 | 0.0 |
| 40 + years | 0.1 | 0.2 | -0.1 |
| Rounding adjustment | 0.0 | 0.1 | 0.1 |
| TOTAL | 2.7 | 2.9 | -0.1 |

Includes the effect of interest rate derivatives such as government bond futures, inflation swaps and interest rate swaps.

Currency Exposure

| | Before Hedging | After Hedging | Index |
|---------------------|----------------|---------------|---------------|
| EUR | 59.21 | 99.77 | 67.15 |
| USD | 22.14 | 0.21 | 24.02 |
| GBP | 18.64 | 0.02 | 8.83 |
| JPY | 0.00 | 0.00 | 0.00 |
| CAD | 0.00 | 0.00 | 0.00 |
| Other | 0.00 | 0.00 | 0.00 |
| Rounding adjustment | 0.01 | - | 0.00 |
| TOTAL | 100.00 | 100.00 | 100.00 |

Exposure as a percent of total net assets.

This table shows the currency exposure and hedging of the fund's investments.

Investors in hedged classes have opted not to have the currency exposure shown in the table, but instead to have c100% exposure to the dealing currency. The table still provides information on the fund's underlying investments. The effect of hedging is described in the Objectives & Investment Policy section on page 1 of this factsheet.

Regional Exposure - Domicile Of Issuer

| | Security Holdings (excl. Derivatives) | | | Contribution to Duration (incl. Derivatives) | | | Contribution to Duration Times Spread (incl. Derivatives) | | |
|-------------------------------|---------------------------------------|--------|----------|---|-------|----------|--|-------|----------|
| | Fund | Index | Relative | Fund | Index | Relative | Fund | Index | Relative |
| Multinational | 0.00 | 0.00 | 0.00 | 0.0 | 0.0 | 0.0 | 3 | 0 | 3 |
| United States (& Other Amer.) | 2.07 | 1.77 | 0.30 | 0.1 | 0.0 | 0.0 | 17 | 22 | -4 |
| Canada | 0.00 | 0.00 | 0.00 | 0.0 | 0.0 | 0.0 | 0 | 0 | 0 |
| United Kingdom (& Ire.) | 26.63 | 19.07 | 7.56 | 0.5 | 0.6 | -0.1 | 182 | 196 | -14 |
| France | 11.86 | 16.88 | -5.02 | 0.3 | 0.5 | -0.1 | 124 | 180 | -56 |
| Germany (& Aust.) | 11.11 | 11.59 | -0.48 | 0.3 | 0.3 | 0.0 | 138 | 108 | 30 |
| Benelux | 7.82 | 10.27 | -2.45 | 0.2 | 0.3 | -0.1 | 139 | 151 | -12 |
| Scandinavia | 5.20 | 4.90 | 0.30 | 0.1 | 0.1 | 0.0 | 53 | 82 | -29 |
| Mediterranean | 17.72 | 24.54 | -6.82 | 0.6 | 0.8 | -0.2 | 178 | 218 | -40 |
| Switzerland | 0.29 | 1.33 | -1.05 | 0.0 | 0.0 | 0.0 | 5 | 22 | -17 |
| Other Europe | 0.98 | 0.30 | 0.68 | 0.0 | 0.0 | 0.0 | 16 | 5 | 11 |
| Japan | 0.00 | 0.00 | 0.00 | 0.0 | 0.0 | 0.0 | 0 | 0 | 0 |
| Australia & N.Z. | 0.00 | 0.00 | 0.00 | 0.0 | 0.0 | 0.0 | 0 | 0 | 0 |
| Asia ex Japan ex Aus. | 1.29 | 0.12 | 1.17 | 0.0 | 0.0 | 0.0 | 18 | 1 | 17 |
| C.I.S / Eastern Europe | 7.43 | 8.63 | -1.21 | 0.2 | 0.2 | -0.1 | 109 | 96 | 13 |
| Latin America | 0.00 | 0.37 | -0.37 | 0.0 | 0.0 | 0.0 | 0 | 6 | -6 |
| Middle East / N Africa | 0.99 | 0.09 | 0.90 | 0.0 | 0.0 | 0.0 | 0 | 1 | -1 |
| Sub-Saharan Africa | 1.51 | 0.13 | 1.38 | 0.0 | 0.0 | 0.0 | 12 | 0 | 12 |
| Other | 0.00 | 0.00 | 0.00 | 0.0 | 0.0 | 0.0 | 0 | 0 | 0 |
| Unclassified | 0.00 | 0.00 | 0.00 | 0.0 | 0.0 | 0.0 | 0 | 0 | 0 |
| FX / Derivative P&L | -0.44 | 0.00 | -0.44 | 0.5 | 0.0 | 0.5 | 15 | 0 | 15 |
| Index Credit Default Swaps | 0.00 | 0.00 | 0.00 | 0.0 | 0.0 | 0.0 | 0 | 0 | 0 |
| Cash | 5.55 | 0.00 | 5.55 | 0.0 | 0.0 | 0.0 | 0 | 0 | 0 |
| Rounding adjustment | -0.01 | 0.01 | - | -0.1 | 0.1 | -0.0 | 2 | 0 | 1 |
| Total | 100.00 | 100.00 | - | 2.7 | 2.9 | -0.1 | 1011 | 1088 | -77 |

Security Holdings as a percent of total net assets. Contribution to duration (CTD) and contribution to duration-times-spread (DTS) are in the appropriate units of measure. CTD and DTS include the effect of derivatives. 'FX / Derivative P&L' includes collateral balances with counterparties arising from derivatives used in the fund (this can lead to a negative balance).

Top 10 Long Exposures By Issuer

| | Fund | Index | Relative |
|---|------|-------|----------|
| (EDF) ELECTRICITE 7.5%/VAR PERP RGS | 2.77 | 2.03 | 0.74 |
| (ASSDLN) BELLIS ACQUISIT 4.5% 2/26 RGS | 2.39 | 0.77 | 1.62 |
| (ILDFP) ILIAD HLDG 5.125% 10/15/26 RGS | 2.32 | 1.65 | 0.67 |
| (ZFFNGR) ZF FINANCE GMBH 3% 9/21/25 RGS | 2.21 | 2.02 | 0.19 |
| (JERRGB) Jerrold Finco Plc | 2.10 | 0.26 | 1.84 |
| (TITIM) Telecom Italia Spa | 2.04 | 3.00 | -0.95 |
| (VKFP) VALLOUREC SA 8.5% 06/30/26 RGS | 2.02 | 0.23 | 1.79 |
| (ISPIIM) INTESA SA 6.375%/VAR PERP RGS | 1.89 | 1.39 | 0.50 |
| (TELEFO) Telefonica Europe Bv | 1.77 | 1.58 | 0.19 |
| (CAJAMA) BANCO DE C 8%/VAR 09/22/26 RGS | 1.59 | 0.50 | 1.09 |

Top long exposures are those bond issuers that reflect the largest percentage of the fund's total net assets. The effect of credit derivatives is included where the reference entity is a specific bond issuer. Government bond futures and index credit default swaps are excluded.

Where bonds are issued by different entities within the same corporate group/complex, the aggregated exposure may not be reflected in the data above.

Top Overweights By Issuer

| | Fund | Index | Relative |
|---|------|-------|----------|
| (JERRGB) Jerrold Finco Plc | 2.10 | 0.26 | 1.84 |
| (VKFP) VALLOUREC SA 8.5% 06/30/26 RGS | 2.02 | 0.23 | 1.79 |
| (ASSDLN) BELLIS ACQUISIT 4.5% 2/26 RGS | 2.39 | 0.77 | 1.62 |
| (AABOND) AA BOND CO LTD 6.5% 1/26 RGS | 1.36 | 0.00 | 1.36 |
| (COOPBK) Co-Operative Bnk Finance | 1.34 | 0.18 | 1.16 |
| (ENRGRP) ENERGIA GRP 6.875% 7/28 RGS | 1.29 | 0.13 | 1.15 |
| (ENGPRO) ENERGO-PRO AS 8.5% 2/4/27 RGS | 1.28 | 0.16 | 1.12 |
| (NEMEAN) NEMEAN BONDCO 13.25% 12/26 RGS | 1.17 | 0.07 | 1.10 |
| (SAZGR) NIDDA HEALTHCAR 7.5% 8/26 RGS | 1.42 | 0.33 | 1.09 |
| (CAJAMA) BANCO DE C 8%/VAR 09/22/26 RGS | 1.59 | 0.50 | 1.09 |

Top Underweights By Issuer

| | Fund | Index | Relative |
|---------------------------------------|------|-------|----------|
| (RENAUL) Renault Sa | 0.00 | 1.05 | -1.05 |
| (TITIM) Telecom Italia Spa | 2.04 | 3.00 | -0.95 |
| (BAYNGR) Bayer Ag | 0.00 | 0.89 | -0.89 |
| (CMZB) Commerzbank Ag | 0.29 | 1.17 | -0.88 |
| (BPEIM) Bper Banca | 0.00 | 0.86 | -0.86 |
| (VMED) VMED O2 UK FIN 4% 01/31/29 RGS | 1.49 | 2.34 | -0.84 |
| (VOD) Vodafone Group Plc | 1.00 | 1.80 | -0.79 |
| (ELOFR) Auchan Holding Sadir | 0.00 | 0.78 | -0.78 |
| (VIEFP) Veolia Environnement Sa | 0.00 | 0.73 | -0.73 |
| (GRFSM) Grifols Sa | 0.00 | 0.70 | -0.70 |

Top overweights and underweights are those bond issuers that have the largest active positions relative to the index holding. The effect of credit derivatives is included where the reference entity is a specific bond issuer. Government bond futures and index credit default swaps are excluded.

ESG Metrics

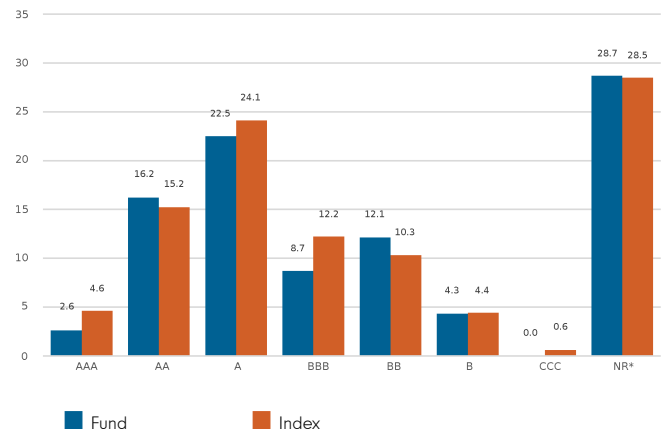
The factsheet is a snapshot of the portfolio at the date indicated above. ESG ratings distribution may vary over time. Representation of this data is for informational purposes only. If the SFDR classification is shown as 6 below then this fund does not promote environmental or social characteristics nor does it have a sustainable investment objective. If it is shown as 8, the fund promotes environmental or social characteristics. If it is shown as 9, the fund has a sustainable investment objective. Product-specific information can be found on our website at www.fidelityinternational.com

Sustainability Characteristics (31.03.2024)

| | Fund | Index |
|---|-------|-------|
| MSCI ESG Fund Rating (AAA-CCC) | A | N/R |
| Weighted Average Carbon Intensity (tCo2e/\$M Revenue) | 100.7 | 102 |
| SFDR Classification | 8 | N/A |

N/A - Not Applicable
N/R - Not Rated

MSCI Ratings Distribution % (31.03.2024)



ESG Fund rating based on holding as at 31.01.24 with 64.6% security coverage. Carbon intensity data based on holdings as at 31.03.24 with 67.2% security coverage.

Glossary

MSCI ESG Fund Rating: This shows the fund's ESG rating based on the Quality Scores given to the fund by MSCI. This ranges from AAA, AA (Leader), A, BBB, BB (Average) to B, CCC (Laggard). To be included in MSCI ESG Fund Ratings, 65% of the fund's gross weight must come from covered securities (and excluding cash), the fund's holdings date must be less than one year old and the fund must have at least ten securities.

Weighted Average Carbon Intensity: is calculated as the sum of each portfolio weight multiplied by the Co2e per \$M of Revenue of each holding. This metric provides a snapshot of the fund's exposure to carbon-intensive companies and includes scope 1 and scope 2 carbon emissions. For carbon data, the coverage of underlying securities must be over 50% for data to be shown.

SFDR Classification: Shows the classification given to each fund as part of the EU Sustainable Finance Disclosure Regulation (SFDR). Article 9 funds aim to achieve an ESG outcome and are products with ESG objectives. Article 8 funds focus on promoting ESG characteristics and this must be a primary focus of the product. Article 6 funds integrate sustainability risks (unless specified otherwise in the prospectus) into investment analysis and decision-making, without the funds promoting environmental or social characteristics or having sustainable investments as their objective.

MSCI Ratings Distribution: This shows the percentage distribution of ESG ratings in the fund, based on the Net Asset Value of holdings excluding cash, liquidity funds, derivatives and Exchange Traded Funds.

Information on sustainability-related aspects is provided pursuant to SFDR at <https://www.fidelity.lu/sfdr-entity-disclosures>

Disclaimer

ESG Rating Source: ©2024 MSCI ESG Research LLC. Reproduced by permission, no further distribution. MSCI ESG Research LLC and its affiliates (the "ESG Parties"), obtain information from sources they consider reliable, none of the ESG Parties warrants or guarantees the originality, accuracy and/or completeness of any data herein. None of the ESG Parties makes any express or implied warranties of any kind, and the ESG Parties hereby expressly disclaim all warranties of merchantability and fitness for a particular purpose, with respect to any data herein. None of the ESG Parties shall have any liability for any errors or omissions in connection with any data herein. Further, without limiting any of the foregoing, in no event shall any of the ESG Parties have any liability for any direct, indirect, special, punitive, consequential or any other damages (including lost profits) even if notified of the possibility of such damages. The information is as at the date of production based on data provided by MSCI. There may be timing differences between the date at which data is captured and reported. For more up to date information, you can visit <https://www.msci.com/esg-fund-ratings>

Carbon Data Source: Data provided by ISS ESG. All rights in the information provided by Institutional Shareholder Services Inc. and its affiliates (ISS) reside with ISS and/or its licensors. ISS makes no express or implied warranties of any kind and shall have no liability for any errors, omissions or interruptions in or in connection with any data provided by ISS. The information is as at the date of production based on carbon data provided by ISS. There may be timing differences between the date at which data is captured and reported.

SFDR Classification is assigned by Fidelity in line with the EU Sustainable Financial Disclosure Regulation.

Glossary

Volatility & Risk

Annualised volatility: a measure of how variable returns for a fund or comparative market index have been around their historical average (also known as “standard deviation”). Two funds may produce the same return over a period. The fund whose monthly returns have varied less will have a lower annualised volatility and will be considered to have achieved its returns with less risk. The calculation is the standard deviation of 36 monthly returns presented as an annualised number. Volatility for funds and indices are calculated independently of each other.

Relative volatility: a ratio calculated by comparing the annualised volatility of a fund to the annualised volatility of a comparative market index. A value greater than 1 indicates the fund has been more volatile than the index. A value less than 1 shows the fund has been less volatile than the index. A relative volatility of 1.2 means the fund has been 20% more volatile than the index, while a measure of 0.8 would mean the fund has been 20% less volatile than the index.

Sharpe ratio: a measure of a fund’s risk-adjusted performance, taking into account the return on a risk-free investment. The ratio allows an investor to assess whether the fund is generating adequate returns for the level of risk it is taking. The higher the ratio, the better the risk-adjusted performance has been. If the ratio is negative, the fund has returned less than the risk-free rate. The ratio is calculated by subtracting the risk-free return (such as cash) in the relevant currency from the fund’s return, then dividing the result by the fund’s volatility. It is calculated using annualised numbers.

Annualised alpha: the difference between a fund’s expected return (based on its beta) and the fund’s actual return. A fund with a positive alpha has delivered more return than would be expected given its beta.

Beta: a measure of a fund’s sensitivity to market movements (as represented by a market index). The beta of the market is 1.00 by definition. A beta of 1.10 shows that the fund could be expected to perform 10% better than the index in up markets and 10% worse in down markets, assuming all other factors remain constant. Conversely, a beta of 0.85 indicates that the fund could be expected to perform 15% worse than the market return during up markets and 15% better during down markets.

Annualised tracking error: a measure showing how closely a fund follows the index to which it is being compared. It is the standard deviation of the fund’s excess returns. The higher the fund’s tracking error, the higher the variability of fund returns around the market index.

Information ratio: a measure of a fund’s effectiveness in generating excess return for the level of risk taken. An information ratio of 0.5 shows the fund has delivered an annualised excess return equivalent to half the value of the tracking error. The ratio is calculated by taking the fund’s annualised excess return and dividing it by the fund’s tracking error.

R²: a measure representing the degree to which a fund’s return can be explained by the returns of a comparative market index. A value of 1 signifies the fund and index are perfectly correlated. A measure of 0.5 means only 50% of the fund’s performance can be explained by the index. If the R² is 0.5 or lower, the fund’s beta (and therefore its alpha too) is not a reliable measure (due to a low correlation between fund and index).

Ongoing charges

The ongoing charges figure represents the charges taken from the fund over a year. It is calculated at the fund’s financial year end and may vary from year to year. For classes of funds with fixed ongoing charges, this may not vary from year to year. For new classes of funds or classes undergoing corporate actions (eg amendment to annual management charge), the ongoing charges figure is estimated until the criteria are met for an actual ongoing charges figure to be published.

The types of charges included in the ongoing charges figure are management fees, administration fees, custodian and depositary fees and transaction charges, shareholder reporting costs, regulatory registration fees, Directors fees (where applicable) and bank charges.

It excludes: performance fees (where applicable); portfolio transaction costs, except in the case of an entry/exit charge paid by the fund when buying or selling units in another collective investment undertaking.

For more information about charges (including details of the fund’s financial year end), please consult the charges section in the most recent Prospectus.

Independent Assessment

Primary share class: is identified by Morningstar when the analysis calls for only one share class per fund to be in the peer group. It is the share class Morningstar recommends as the best proxy for the portfolio for the relevant market and category/GIF combination. In most cases the share class chosen will be the most retail version (based upon actual management charge, inception date, distribution status, currency and other factors) unless a share class that is less retail focused has a much longer track record. It is different to the oldest share class data point in that it is on an available for sale level and not all markets will have the oldest share class for sale in that region. The Primary share class is also based on category so each available for sale/category combination for the fund will have its own primary share class.



Glossary

Portfolio Characteristics

Distribution Yield (%)

The Distribution Yield reflects the amounts that may be expected to be distributed over the next twelve months as a percentage of the mid-market unit price of the fund as at the date shown and is based on a snapshot of the portfolio on that day. It includes the fund's ongoing charges but does not include any preliminary charge and investors may be subject to tax on distributions.

Effective Duration

Duration is a measure of sensitivity of the fund value to changes in interest rates.

Effective duration is a duration calculation for bonds with embedded options (such as a call or a put option). It takes into account that expected cash flows will fluctuate as interest rates change and affect a bond's price.

The effective duration of a fund is calculated by a market weighted sum of the effective duration of each individual instrument. The effect of derivatives such as bond futures and interest rate swaps are included in the calculation.

Running Yield (%)

Describes the income investors get from their portfolio as a percentage of market value of the securities, incorporating the effect of derivatives. It should not be relied on as a measure of expected fund return (or distribution). Bonds with high probability of default are excluded from the calculation. The running yield does not reflect the total return over the life of the bond and takes no account of reinvestment risk (the uncertainty about the rate at which future cash flows can be reinvested) or the fact that bonds usually mature at par value, which can be an important component of a bond's return. The running yield does not include the impact of fees.

Yield to Maturity (%)

The Yield to Maturity (also known as the Redemption Yield) is the aggregate of all anticipated returns on each individual bond within the portfolio expressed as an annual rate based on market value as at date shown, coupon rate and time to maturity of each bond. It is based on a snapshot of the portfolio on that date. The redemption yield is gross of the fund's charges and gross of tax.

Average Maturity (Years)

The market-weighted average maturity of bonds held in the portfolio. Perpetual bonds are assigned a maturity of 31 December 2049. Derivatives are excluded from the calculation.

Average Coupon (%)

The coupon is the interest rate stated on a bond when it is issued. Average Coupon is the weighted average coupon of bonds held in the portfolio. Derivatives are excluded from the calculation.

Spread Duration

The sensitivity of the price of a bond to a change in its Option Adjusted Spread.

Option Adjusted Spread (Basis Points)

Option Adjusted Spread (OAS) measures the yield spread that is not directly attributable to the bond's characteristics. OAS is a measurement tool for evaluating price differences between similar bonds with different embedded options. A larger OAS implies a greater return for greater risks.

Duration Times Spread (DTS)

DTS is a measure of credit risk sensitivity that utilises credit spread and credit spread duration based on current market valuations. It is superior to spread duration as a standalone measure of credit risk because it recognises that securities with a higher spread tend to experience greater spread changes. The portfolio's DTS is the value weighted sum of the DTS of each individual instrument.

Number of Holdings

The number of bonds and derivatives held in the fund. Where the fund invests in another fund, it is counted as one holding. FX (foreign exchange) forwards are excluded. These are forward contracts that allow currency to be bought or sold at an agreed price on a future date.

Number of Names

The total number of individual issuers whose bonds are held in the fund. Since the fund will often hold more than one bond from an issuer, this figure is generally lower than the number of holdings.

Average Credit Rating

This is the weighted average of all the bond credit ratings in the fund, expressed using the industry standard letter system (ie AAA, BBB). It takes into account all investments in the fund, including derivatives. This measure gives an idea of how risky the fund's bonds are overall: the lower the average credit rating, the riskier the fund.

With a Linear weighted average, the weight assigned to each issue is equal to its market value weight. With an Exponential weighted average, the weight gets proportionally higher for lower-quality credit. In both calculations, the final value is the S&P-equivalent rating nearest to the calculated average.

Primary share class: is identified by Morningstar when the analysis calls for only one share class per fund to be in the peer group. It is the share class Morningstar recommends as the best proxy for the portfolio for the relevant market and category/GIF combination. In most cases the share class chosen will be the most retail version (based upon actual management charge, inception date, distribution status, currency and other factors) unless a share class that is less retailed focused has a much longer track record. It is different to the oldest share class data point in that it is on an available for sale level and not all markets will have the oldest share class for sale in that region. The Primary share class is also based on category so each available for sale/category combination for the fund will have its own primary share class.

Weighted Average Life: The weighted average life (WAL) is the average length of time that each euro of unpaid principal on a loan, a mortgage or an amortizing bond remains outstanding.

Discount Margin: A discount margin (DM) is the average expected return earned in addition to the index underlying, or reference rate of, the floating rate security.

Portfolio Turnover Rate (PTR) and Portfolio Turnover Cost (PTC), where shown: SRDII does not define a methodology for these values; ours is as follows: **PTR** = (purchases of securities + sales of securities) minus (subscriptions of units + redemptions of units), divided by average fund value over the prior 12 months multiplied by 100. Any funds' trading in Fidelity Institutional Liquidity Funds is excluded from the PTR calculation. **PTC** = PTR (capped at 100%) x transaction cost, where transaction cost is calculated as ex-post (i.e. prior 12 months) MiFID disclosure of portfolio transaction costs minus implicit costs.

Important Information

This is a marketing communication. This information must not be reproduced or circulated without prior permission.

Fidelity only offers information on products and services and does not provide investment advice based on individual circumstances, other than when specifically stipulated by an appropriately authorised firm, in a formal communication with the client.

Fidelity International refers to the group of companies which form the global investment management organisation that provides information on products and services in designated jurisdictions outside of North America. This communication is not directed at, and must not be acted upon by persons inside the United States and is otherwise only directed at persons residing in jurisdictions where the relevant funds are authorised for distribution or where no such authorisation is required.

Unless otherwise stated all products are provided by Fidelity International, and all views expressed are those of Fidelity International. Fidelity, Fidelity International, the Fidelity International logo and F symbol are registered trademarks of FIL Limited. FIL Limited assets and resources as at 28/02/2023 - data is unaudited. Research professionals include both analysts and associates. The performance figures shown do not take into account the fund's Initial Charge. If you took an initial charge of 5.25% from an investment, this is the equivalent of reducing a growth rate of 6% per annum over 5 years to 4.9%. This is the highest initial charge applicable, if the initial charge you pay is less than 5.25%, the impact on the overall performance will be less.

Fidelity Funds "FF" is an open-ended investment company (UCITS) established in Luxembourg with different classes of shares. FIL Investment Management (Luxembourg) S.A. reserves the right to terminate the arrangements made for the marketing of the sub-fund and/ or its shares in accordance with Article 93a of Directive 2009/65/EC and Article 32a of Directive 2011/61/EU. Prior notice of this cessation will be made in Luxembourg.

Morningstar annualised growth rates, total return, sector median performance and ranks - Data Source - © 2024 Morningstar, Inc. All Rights Reserved. The information contained herein: (1) is proprietary to Morningstar and/or its content providers; (2) may not be copied or distributed; and (3) is not warranted to be accurate, complete or timely. Neither Morningstar nor its content providers are responsible for any damages or losses arising from any use of this information.

This share class is registered and distributed in the following locations: Austria, Belgium, Croatia, France, Germany, Hungary, Italy, Liechtenstein, Luxembourg, Qatar, Romania, Spain, Switzerland, United Kingdom.

We recommend that you obtain detailed information before taking any investment decision on the basis of the current prospectus and KID (key information document), along with the current annual and semi-annual reports free of charge through <https://www.fidelityinternational.com>, from our distributors, from your financial advisor or from the branch of your bank and from our European Service Centre in Luxembourg, FIL (Luxembourg) S.A., 2a, rue Albert Borschette BP 2174 L-1021 Luxembourg. Issued by FIL (Luxembourg) S.A., authorised and supervised by the CSSF (Commission de Surveillance du Secteur Financier). Investors/ potential investors can obtain information on their respective rights regarding complaints and litigation on your local Fidelity website which can be accessed via the following link <https://www.fidelityinternational.com> (Products & services) by selecting your country of residence. All documentation and information will be in the local or an accepted European language of the country selected.

Documentation can also be obtained from the following paying agents/distributors: **Austria** - UniCredit Bank Austria AG, Schottengasse 6-8, 1010 Vienna., **Croatia** - Zagrebacka banka d.d., Trg bana Josipa Jelacica 10, 10000 Zagre., **Hungary** - Raiffeisenbank Zentralbank Österreich AG, Akademie u. 6, 1054 Budapest., **Liechtenstein** - VP Bank AG, Äulestrasse 6, 9490 Vaduz., **Switzerland** - BNP Paribas, Paris, succursale de Zurich, Selnastrasse 16, 8002 Zurich.

France : Issued by FIL Gestion, a portfolio management company approved by the AMF under the number GP03-004, 21 avenue Kleber, 75116 Paris.

Germany : For German Wholesale clients issued by FIL Investments Services GmbH, Kastanienhöhe 1, 61476 Kronberg im Taunus. For German Institutional clients issued by FIL (Luxembourg) S.A., 2a, rue Albert Borschette BP 2174 L-1021 Luxembourg. For German Pension clients issued by FIL Finance Services GmbH, Kastanienhöhe 1, 61476 Kronberg im Taunus.

Spain : Fidelity Funds and Fidelity Active Strategy (FAST) are open-ended collective investment schemes incorporated in Luxembourg. The distributing and depositary entities are, respectively, FIL (Luxembourg) S.A. and Brown Brothers Harriman (Luxembourg) S.C.A. Fidelity Funds and FAST are registered for marketing in Spain in the register of Foreign Collective Investment Undertakings of the CNMV under registration numbers 124 and 649 respectively, where detailed information on the local distributors can be obtained.

Switzerland : Fidelity undertakes the financial services of purchasing and/or selling financial instruments within the meaning of the Financial Services Act ("FinSA"). Fidelity is not required to assess the appropriateness and suitability under FinSA. Issued by FIL Investment Switzerland AG.

United Arab Emirates : For the United Arab Emirates, the DIFC branch of FIL Distributors International Limited, is regulated by the DFSA for the provision of Arranging Deals in Investments only. All communications and services are directed at Professional Clients and Market Counterparty only (as defined in the DFSA rulebook). Persons other than Professional Clients and Market Counterparties, such as Retail Clients, are NOT the intended recipients of our communications or services. This document contains information that makes reference to a Fund which is not subject to any form of regulation or approval by the Dubai Financial Services Authority ("DFSA"). The DFSA has no responsibility for reviewing or verifying any Prospectus or other documents in connection with this Fund. Accordingly, the DFSA has not approved this Prospectus or any other associated documents nor taken any steps to verify the information set out in this Prospectus and has no responsibility for it. Collective Investment Rules (CIR) 134 CIR/VER30/02-21. The Units to which this Prospectus relates may be illiquid and/or subject to restrictions on their resale. Prospective purchasers should conduct their own due diligence on the Units. If you do not understand the contents of this document, you should consult an authorised financial adviser.

CSO3463/na English 29412 T101a