

## Strategy

The fund aims to achieve long-term growth, primarily through investments in Sustainable European equity securities. The investment approach will leverage Fidelity's differentiated research capabilities and analyst top ideas to deliver a concentrated portfolio which promotes sustainable characteristics, with high stock-specific risk that aims to generate consistent, predictable excess returns. The investment process is a direct reflection of the analyst's teams' best sustainable ideas, on a cross sector basis, within European equities.

## Objectives & Investment Policy

**Objective:** The fund aims to achieve capital growth over the long term.

**Investment Policy:** The fund invests at least 70% of its assets, in equities of companies that are listed, headquartered, or do most of their business in Europe. The fund may also invest in money market instruments on an ancillary basis. The fund invests at least 70% of its assets in securities of issuers with favourable environmental, social and governance (ESG) characteristics and up to 30% in securities of issuers with improving ESG characteristics.

**Investment Process:** In actively managing the fund, the Investment Manager considers growth and valuation metrics, company financials, return on capital, cash flows and other measures, as well as company management, industry, economic conditions, and other characteristics. The Investment Manager also considers ESG characteristics when assessing investment risks and opportunities. In determining favourable ESG characteristics, the Investment Manager takes into account ESG ratings provided by Fidelity or external agencies.

Through the investment management process, the Investment Manager aims to ensure that investee companies follow good governance practices. The fund assesses the ESG characteristics of at least 90% of its assets. The fund's average ESG rating exceeds the average ESG rating of its investment universe after excluding 20% of the assets with the lowest ESG ratings.

The fund adheres to the Fidelity Sustainable Family of Funds standards. For more information, see "Sustainable Investing and ESG Integration" and the Sustainability Annex.

**Derivatives and Techniques:** The fund may use derivatives for hedging, efficient portfolio management and investment purposes.

**Benchmark:** MSCI Europe Index, an index that does not take into account ESG characteristics. Used for: investment selection, risk monitoring and performance comparison.

## Fund Facts

**Launch date:** 30.09.98

**Portfolio manager:** Terry Raven, Alexander Grant

**Appointed to fund:** 01.08.19, 28.10.21

**Years at Fidelity:** 6, 10

**Fund size:** S\$ 308m

**Number of positions in fund\*:** 42

**Fund reference currency:** Euro (EUR)

**Fund domicile:** Luxembourg

**Fund legal structure:** SICAV

**Management company:** FIL Investment Management (Luxembourg) S.A.

**Capital guarantee:** No

**Portfolio Turnover Cost (PTC):** 0.07%

**Portfolio Turnover Rate (PTR):** 52.27%

\*A definition of positions can be found on page 3 of this factsheet in the section titled "How data is calculated and presented."

## Share Class Facts

Other share classes may be available. Please refer to the prospectus for more details.

**Launch date:** 05.10.15

**NAV price in share class currency:** 1.171

**ISIN:** LU1295420803

**SEDOL:** BYSPZK9

**WKN:** A14013

**Bloomberg:** FFEBCYS LX

**Dealing cut-off:** 15:00 UK time (normally 16:00 Central European Time)

**Distribution type:** Income

**Distribution frequency:** Annual

**Ongoing Charges Figure (OCF) per year:** 1.09% (30.04.23)

**OCF takes into account annual management charge per year:** 0.8%

## Risk Indicator



The risk indicator assumes you keep the product for 5 years. The actual risk can vary significantly if you cash in at the early stage and you may get back less.

The summary risk indicator is a guide to the level of risk of this product compared to other products. It shows how likely it is that the product will lose money because of movements in the markets or because we are not able to pay you. We have classified this product as 4 out of 7, which is a medium risk class. This rates the potential losses from future performance at a medium level, and poor market conditions could impact the capacity to pay you. Returns may increase or decrease as a result of currency fluctuations. This product does not include any protection from future market performance so you could lose some or all of your investment. If FIL Investment Management (Luxembourg) S.A. is not able to pay you what is owed, you could lose your entire investment.

## Important Information

The value of your investment may fall as well as rise and you may get back less than you originally invested. The use of financial derivative instruments may result in increased gains or losses within the fund. The Investment Manager's focus on securities of issuers which maintain favourable ESG characteristics or that are sustainable investments may affect the fund's investment performance favourably or unfavourably in comparison to similar funds without such focus. Funds are subject to charges and expenses. Charges and expenses reduce the potential growth of your investment. This means you could get back less than you paid in. The costs may increase or decrease as a result of currency and exchange rate fluctuations. Please refer to the Prospectus and KID of the fund before making any final investment decisions. When referring to sustainability - related aspects of the promoted fund, the decision to invest should take into account all characteristics or objectives of the promoted fund as detailed in the Prospectus. Information on sustainability-related aspects is provided pursuant to SFDR at <https://www.fidelity.lu/stdr-entity-disclosures>.

Past performance does not predict future returns. The fund's returns may increase or decrease as a result of currency fluctuations. The investment which is promoted concerns the acquisition of units or shares in a fund, and not in a given underlying asset owned by the fund.

## Performance Comparator(s)

### Peer Group Universe

Market index from 28.10.21

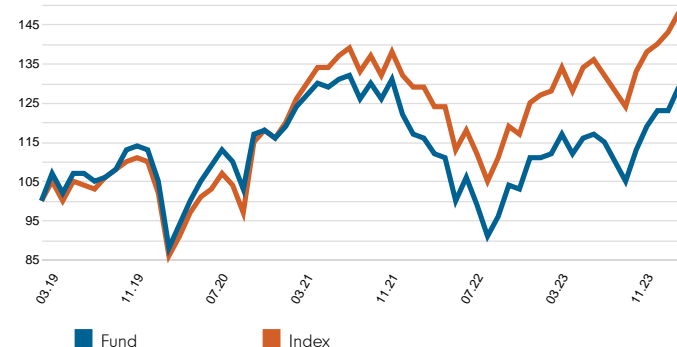
Morningstar EAA Fund Eurozone Large-Cap Equity

MSCI Europe Index (Net)

Market index is for comparative purposes only unless specifically referenced in the Objectives & Investment Policy on page 1. The same index is used in the positioning tables on this factsheet.

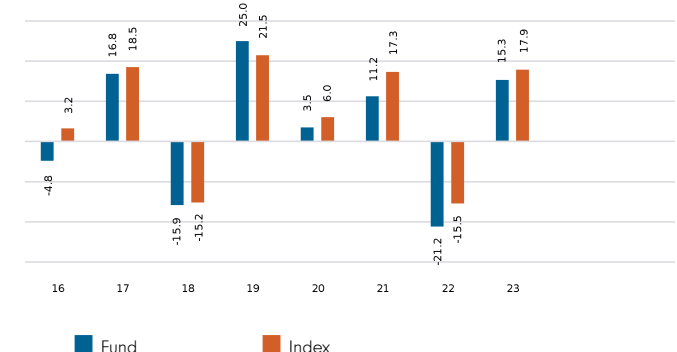
Where the effective date for the current market index is after the share class launch date, full history is available from Fidelity.

## Cumulative performance in SGD (rebased to 100)



Performance is shown for the last five years (or since launch for funds launched within that period).

## Performance for calendar years in SGD (%)



## Performance to 31.03.24 in SGD (%)

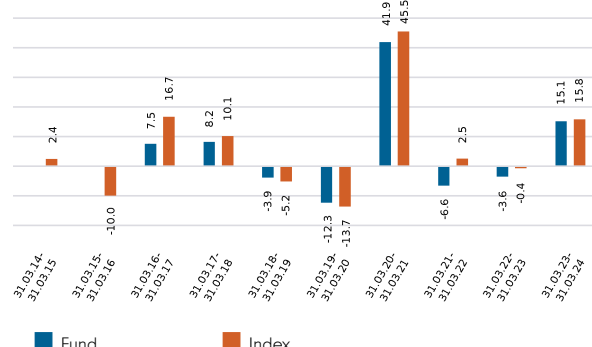
|   | 1m  | 3m  | YTD | 1yr  | 3yr  | 5yr  | Since 05.10.15* |
|---|-----|-----|-----|------|------|------|-----------------|
| Fund cumulative growth                    | 4.7 | 8.6 | 8.6 | 15.1 | 3.7  | 28.9 | 30.6            |
| Index cumulative growth                   | 4.1 | 7.7 | 7.7 | 15.8 | 18.3 | 48.5 | 67.9            |
| Fund annualised growth                    | -   | -   | -   | 15.1 | 1.2  | 5.2  | 3.2             |
| Index annualised growth                   | -   | -   | -   | 15.8 | 5.8  | 8.2  | 6.3             |
| <b>Ranking within Peer Group Universe</b> |     |     |     |      |      |      |                 |
| Y-Euro                                    | 29  | 105 | 105 | 233  | 437  | 322  |                 |
| Total number of funds                     | 616 | 613 | 613 | 596  | 529  | 455  |                 |
| Quartile ranking**                        | 1   | 1   | 1   | 2    | 4    | 3    |                 |

The performance figures above include performance prior to the repurpose of the fund on 28 October 2021 from the legacy Fidelity Funds - Euro Blue Chip Fund. Before this date the performance was achieved in circumstances that no longer apply. Source of fund performance and volatility and risk measures is Fidelity. Performance is excluding initial charge. Basis: nav-nav with income reinvested, in SGD, net of fees. If you took an initial charge of 5.25% from an investment, this is the equivalent of reducing a growth rate of 6% per annum over 5 years to 4.9%. This is the highest initial charge applicable, if the initial charge you pay is less than 5.25%, the impact on the overall performance will be less. Market indices are sourced from RIMES and other data is sourced from third-party providers such as Morningstar.

\*Performance commencement date.

\*\*Quartile rank is for the fund's primary share class as identified by Morningstar, which may be different than the share class detailed in this factsheet and refers to performance over time rated on a scale of 1-4. A ranking of 1 indicates that the item being ranked is in the top 25% of the sample and so on. Rankings are based on a performance record that is included in the Peer Group Universe. In line with Investment Association methodology, this record may include a track record extension from a legacy share class and the record may not be the same class of this factsheet. Quartile ranking is an internal Fidelity International calculation. Ranking may vary by share class.

## Performance for 12 month periods in SGD (%)



## Volatility & Risk (3 years)

|                                 |       |                               |       |
|---------------------------------|-------|-------------------------------|-------|
| Annualised Volatility: fund (%) | 16.07 | Annualised Alpha              | -4.65 |
| Relative Volatility             | 1.12  | Beta                          | 1.09  |
| Sharpe Ratio: fund              | -0.05 | Annualised Tracking Error (%) | 3.77  |
|                                 |       | Information Ratio             | -1.21 |
|                                 |       | R <sup>2</sup>                | 0.95  |

Calculated using month-end data points. Definitions of these terms can be found in the Glossary section of this factsheet.

## Introduction

This factsheet contains information about the composition of the fund at a particular point in time. It aims to help you understand how the fund manager is positioned to achieve the fund's objectives.

The Equity Exposure table below provides an overall view of the fund. This represents - in percentage terms - how much of the fund is invested in the market. The higher the figure, the more the fund will take part in any market rises (or falls).

The definitions section provides a more comprehensive explanation of the individual elements in the table.

The exposure and positioning tables on page 4 break the fund down into a number of different views, each providing a different perspective on the fund's investments.

## How data is calculated and presented

Portfolio composition data has been calculated and presented according to several general principles, which are listed below.

- **Aggregation:** all investments, including derivatives, linked to a particular issuing company have been combined to form a total percentage holding for each company. The aggregate holding is referred to in this factsheet as a position. Where a company is listed in two separate countries, each listing may be classified as a separate issuing company. Exchange Traded Funds (ETFs) and derivatives on ETFs are treated as individual securities - ie not aggregated.
- **Categorisation:** for investments that have underlying securities we use the attributes of the underlying issuing company or common share to determine the appropriate sector, market capitalisation band and geographic area.
- **Derivatives:** all derivatives are included on an exposure basis and, where necessary, are delta-adjusted. Delta-adjusting expresses derivatives in terms of the equivalent number of shares that would be needed to generate the same return.
- **"Basket" securities:** securities that represent a number of company shares - like index futures or options - are allocated to categories (such as sector) whenever possible. Otherwise they are included in the "Other Index / Unclassified" category.

## Equity Exposure (% TNA)

|                 | Exposure<br>(% TNA) |
|-----------------|---------------------|
| Equity          | 99.7                |
| Other           | 0.0                 |
| Uninvested Cash | 0.3                 |

### Definition of terms:

**Equity:** the percentage of the fund that is currently invested in the equity market.

**Other:** the value of any non-equity investments (excluding cash funds) expressed as a percentage of fund TNA.

**Uninvested cash:** this is 100% minus the fund's Equity exposure and minus Other. This leaves any residual cash exposure that is not invested in shares or via derivatives.

**% TNA:** Data is presented as a percentage of TNA, which stands for Total Net Assets (the value of all the fund's assets after the deduction of any liabilities).

## Active Money

|              |       |
|--------------|-------|
| Active Money | 75.4% |
|--------------|-------|

This is the sum of the fund's overweight positions (including effective cash) when compared to the market index.

### Sector/Industry Exposure (% TNA)

| Sector GICS                  | Fund        | Index        | Relative |
|------------------------------|-------------|--------------|----------|
| Health Care                  | 17.9        | 15.4         | 2.5      |
| Financials                   | 17.7        | 18.4         | -0.7     |
| Industrials                  | 16.2        | 16.4         | -0.2     |
| Information Technology       | 11.5        | 8.1          | 3.5      |
| Consumer Staples             | 11.5        | 10.7         | 0.9      |
| Consumer Discretionary       | 7.0         | 11.1         | -4.1     |
| Materials                    | 6.9         | 7.0          | -0.1     |
| Utilities                    | 4.2         | 3.8          | 0.4      |
| Energy                       | 4.2         | 5.4          | -1.2     |
| Communication Services       | 1.8         | 3.0          | -1.2     |
| Real Estate                  | 0.8         | 0.8          | 0.0      |
| <b>Total Sector Exposure</b> | <b>99.7</b> | <b>100.0</b> |          |
| Other Index / Unclassified   | 0.0         | 0.0          |          |
| <b>Total Equity Exposure</b> | <b>99.7</b> | <b>100.0</b> |          |

### Geographic Exposure (% TNA)

|                                  | Fund        | Index        | Relative |
|----------------------------------|-------------|--------------|----------|
| France                           | 26.7        | 18.6         | 8.1      |
| United Kingdom                   | 20.3        | 22.3         | -2.0     |
| Netherlands                      | 12.1        | 7.8          | 4.3      |
| Germany                          | 11.9        | 13.4         | -1.4     |
| Switzerland                      | 9.1         | 14.4         | -5.3     |
| Sweden                           | 4.7         | 4.7          | -0.1     |
| Ireland                          | 4.5         | 0.5          | 4.0      |
| Finland                          | 4.4         | 1.5          | 2.9      |
| Italy                            | 2.3         | 4.3          | -2.0     |
| Austria                          | 2.1         | 0.3          | 1.8      |
| Others                           | 1.8         | 12.3         | -10.5    |
| <b>Total Geographic Exposure</b> | <b>99.7</b> | <b>100.0</b> |          |
| Other Index / Unclassified       | 0.0         | 0.0          |          |
| <b>Total Equity Exposure</b>     | <b>99.7</b> | <b>100.0</b> |          |

### Top Positions (% TNA)

|                       | Sector GICS            | Geographic Location | Fund | Index | Relative |
|-----------------------|------------------------|---------------------|------|-------|----------|
| ASML HOLDING NV       | Information Technology | Netherlands         | 5.1  | 3.5   | 1.6      |
| UNILEVER PLC          | Consumer Staples       | United Kingdom      | 4.3  | 1.1   | 3.2      |
| DANONE SA             | Consumer Staples       | France              | 4.3  | 0.4   | 3.9      |
| RELX PLC              | Industrials            | United Kingdom      | 4.2  | 0.7   | 3.5      |
| ROCHE HOLDING AG      | Health Care            | Switzerland         | 4.1  | 1.7   | 2.4      |
| BNP PARIBAS           | Financials             | France              | 3.8  | 0.7   | 3.1      |
| ASTRAZENECA PLC       | Health Care            | United Kingdom      | 3.7  | 1.9   | 1.8      |
| SAP SE                | Information Technology | Germany             | 3.5  | 1.8   | 1.7      |
| ING GROEP NV          | Financials             | Netherlands         | 3.4  | 0.5   | 2.9      |
| LVMH MOET HENNESSY SE | Consumer Discretionary | France              | 3.4  | 2.3   | 1.1      |

### Top Overweight Positions (% TNA)

|                        | Fund | Index | Relative |
|------------------------|------|-------|----------|
| DANONE SA              | 4.3  | 0.4   | 3.9      |
| RELX PLC               | 4.2  | 0.7   | 3.5      |
| UNILEVER PLC           | 4.3  | 1.1   | 3.2      |
| BNP PARIBAS            | 3.8  | 0.7   | 3.1      |
| ING GROEP NV           | 3.4  | 0.5   | 2.9      |
| COMPAGNIE DE ST GOBAIN | 3.2  | 0.3   | 2.8      |
| CONVATEC GROUP PLC     | 2.7  | 0.0   | 2.7      |
| AIB GROUP PLC          | 2.7  | 0.1   | 2.6      |
| EPIROC AB              | 2.6  | 0.2   | 2.5      |
| ROCHE HOLDING AG       | 4.1  | 1.7   | 2.4      |

### Positions Concentration (% TNA)

|        | Fund | Index |
|--------|------|-------|
| Top 10 | 39.9 | 22.7  |
| Top 20 | 66.2 | 33.7  |
| Top 50 | 99.7 | 52.8  |

#### Definition of terms:

**Index:** the index used in the positioning tables on this page is the index defined in the Performance Comparator(s) section on page 2 of this factsheet.

**Top Positions:** those companies in which the largest percentages of the fund's total net assets are effectively invested. Positions in other funds - including ETFs (Exchange Traded Funds) - can appear in this table, but index derivatives form part of an "Other Index / Unclassified" category which will not appear.

**Top Overweight & Underweight Positions:** those positions which have the largest active weight relative to the index. Positions in other funds - including ETFs (Exchange Traded Funds) - can appear in this table, but index derivatives form part of an "Other Index / Unclassified" category which will not appear.

**Positions Concentration:** illustrates the weight of the top 10, 20 and 50 positions in the fund and the weight of the top 10, 20 and 50 positions in the index. It does not attempt to show the coincidence of security ownership between fund and index.

The **sector/industry classification** used (ie GICS, ICB, TOPIX or IPD) varies by fund. Full descriptions of GICS, ICB, TOPIX and IPD can be found in the glossary.

Figures may not always sum to totals due to rounding

### Market Capitalisation Exposure (% TNA)

| SGD                              | Fund        | Index        | Relative |
|----------------------------------|-------------|--------------|----------|
| >10bn                            | 92.9        | 96.7         | -3.8     |
| 5-10bn                           | 4.5         | 3.1          | 1.4      |
| 1-5bn                            | 2.4         | 0.1          | 2.3      |
| 0-1bn                            | 0.0         | 0.0          | 0.0      |
| <b>Total Market Cap Exposure</b> | <b>99.7</b> | <b>99.8</b>  |          |
| Index / Unclassified             | 0.0         | 0.2          |          |
| <b>Total Equity Exposure</b>     | <b>99.7</b> | <b>100.0</b> |          |

### Regional Exposure (% TNA)

|                                | Fund        | Index        | Relative |
|--------------------------------|-------------|--------------|----------|
| Europe (Eurozone)              | 65.7        | 52.1         | 13.5     |
| UK                             | 20.3        | 22.3         | -2.0     |
| Europe (non-Eurozone/UK)       | 13.7        | 25.6         | -11.8    |
| <b>Total Regional Exposure</b> | <b>99.7</b> | <b>100.0</b> |          |
| Other Index / Unclassified     | 0.0         | 0.0          |          |
| <b>Total Equity Exposure</b>   | <b>99.7</b> | <b>100.0</b> |          |

## Attribution

Performance attribution is produced in the currency shown below. For funds with multiple share classes, the attribution return reflects the aggregate performance across all the share classes. It may therefore deviate from the published return for a particular share class. When using the analysis for hedged share classes, please consider that the attribution is shown before the impact of hedging.

The contributions shown in the tables are before the impact of charges. If charges are applied, their effect is captured in the "Other" category in the tables and will also be reflected in the fund return.

All investments, including derivatives, linked to a particular issuing company have been combined to form a total percentage for each issuing company.

The sector/industry and geographic contribution tables (where relevant) display a maximum of eleven individual entries. Where applicable, only top five and bottom five are listed, with the remaining contribution shown in the "Other Sectors" or "Others" category.

### Currency of attribution

Euro (EUR)

One month relative return (%)

0.87

### Position Contribution (%)

1 month

| Top Contributors   | Average Relative Weight | Relative Performance Contribution | Top Detractors                 | Average Relative Weight | Relative Performance Contribution |
|--------------------|-------------------------|-----------------------------------|--------------------------------|-------------------------|-----------------------------------|
|                    |                         |                                   |                                |                         |                                   |
| ING GROEP NV       | 2.7                     | 0.41                              | RELX PLC                       | 3.5                     | -0.18                             |
| BNP PARIBAS        | 2.9                     | 0.41                              | NOVO-NORDISK AS                | -3.9                    | -0.15                             |
| ZALANDO SE         | 1.3                     | 0.37                              | DR. MARTENS LTD                | 1.1                     | -0.14                             |
| AIB GROUP PLC      | 2.6                     | 0.30                              | ROCHE HOLDING AG               | 2.5                     | -0.10                             |
| CONVATEC GROUP PLC | 2.6                     | 0.30                              | DANONE SA                      | 3.9                     | -0.10                             |
| SCOR SE            | 1.8                     | 0.17                              | CELLNEX TELECOM SAU            | 1.7                     | -0.09                             |
| LONZA GRP AG       | 1.5                     | 0.16                              | BANCO BILBAO VIZ ARGENTARIA SA | -0.6                    | -0.09                             |
| NOVARTIS AG        | -1.9                    | 0.12                              | ERICSSON                       | 1.9                     | -0.09                             |
| SIEMENS AG         | -1.4                    | 0.10                              | BANCO SANTANDER SA             | -0.7                    | -0.09                             |
| OMV AG             | 1.9                     | 0.07                              | COMPAGNIE DE ST GOBAIN         | 2.8                     | -0.08                             |

Positions in other funds - including ETFs (Exchange Traded Funds) - can appear in this table, but index derivatives form part of an "Index / Unclassified" category which will appear in the table(s) below when relevant.

### Sector/Industry Contribution (%)

1 month

### Geographic Contribution (%)

1 month

| Contributions To Relative Return |                               |                       |                                  |                                   | Contributions To Relative Return |                               |                       |                         |                                |
|----------------------------------|-------------------------------|-----------------------|----------------------------------|-----------------------------------|----------------------------------|-------------------------------|-----------------------|-------------------------|--------------------------------|
|                                  | Average<br>Relative<br>Weight | Security<br>Selection | Sector/<br>Industry<br>Selection | Total<br>Relative<br>Contribution |                                  | Average<br>Relative<br>Weight | Security<br>Selection | Geographic<br>Selection | Total Relative<br>Contribution |
| <b>Sector GICS</b>               |                               |                       |                                  |                                   |                                  |                               |                       |                         |                                |
| Financials                       | -1.2                          | 0.76                  | 0.05                             | 0.81                              | France                           | 7.7                           | 0.57                  | -0.05                   | 0.52                           |
| Health Care                      | 2.3                           | 0.12                  | 0.28                             | 0.40                              | Netherlands                      | 4.1                           | 0.50                  | 0.00                    | 0.50                           |
| Consumer Discretionary           | -4.3                          | 0.13                  | 0.11                             | 0.24                              | Ireland                          | 3.9                           | 0.25                  | 0.08                    | 0.33                           |
| Consumer Staples                 | 1.3                           | 0.08                  | 0.02                             | 0.10                              | Switzerland                      | -5.0                          | 0.20                  | 0.13                    | 0.32                           |
| Information Technology           | 3.5                           | 0.08                  | -0.08                            | -0.01                             | Germany                          | -1.5                          | 0.14                  | 0.00                    | 0.14                           |
| Real Estate                      | 0.0                           | -0.02                 | 0.00                             | -0.02                             | Denmark                          | -5.7                          | 0.00                  | -0.11                   | -0.11                          |
| Energy                           | -1.0                          | 0.00                  | -0.03                            | -0.03                             | Finland                          | 3.0                           | 0.01                  | -0.13                   | -0.11                          |
| Communication Services           | -1.2                          | -0.08                 | 0.03                             | -0.05                             | Italy                            | -1.9                          | -0.08                 | -0.07                   | -0.14                          |
| Utilities                        | 0.5                           | -0.08                 | 0.02                             | -0.05                             | United Kingdom                   | -1.8                          | -0.28                 | -0.01                   | -0.29                          |
| Industrials                      | -0.1                          | 0.02                  | -0.24                            | -0.22                             | Spain                            | -2.1                          | -0.23                 | -0.16                   | -0.39                          |
| Materials                        | 0.0                           | -0.14                 | -0.13                            | -0.28                             | Others                           | -1.0                          | 0.03                  | 0.10                    | 0.13                           |
| <b>Total Primary Assets</b>      | <b>-0.2</b>                   | <b>0.86</b>           | <b>0.02</b>                      | <b>0.89</b>                       | <b>Total Primary Assets</b>      | <b>-0.2</b>                   | <b>1.11</b>           | <b>-0.22</b>            | <b>0.89</b>                    |
| Other*                           | 0.2                           |                       |                                  | -0.02                             | Other*                           | 0.2                           |                       |                         | -0.02                          |
| <b>Total</b>                     | <b>0.0</b>                    |                       |                                  | <b>0.87</b>                       | <b>Total</b>                     | <b>0.0</b>                    |                       |                         | <b>0.87</b>                    |

\*Other includes portfolio components not already listed such as cash, expenses and other miscellaneous items.

## ESG Metrics

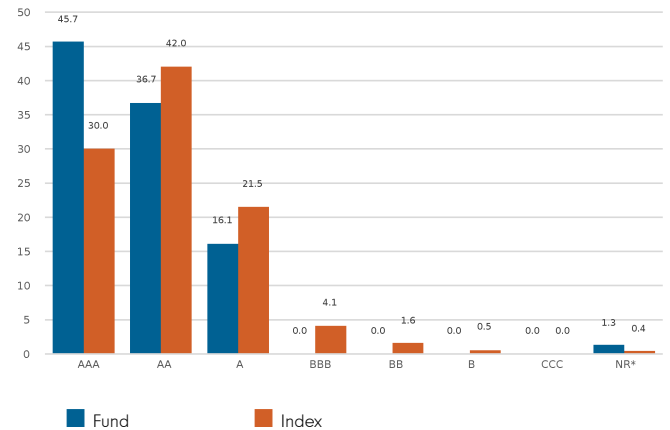
The factsheet is a snapshot of the portfolio at the date indicated above. ESG ratings distribution may vary over time. Representation of this data is for informational purposes only. If the SFDR classification is shown as 6 below then this fund does not promote environmental or social characteristics nor does it have a sustainable investment objective. If it is shown as 8, the fund promotes environmental or social characteristics. If it is shown as 9, the fund has a sustainable investment objective. Product-specific information can be found on our website at [www.fidelityinternational.com](http://www.fidelityinternational.com)

### Sustainability Characteristics (31.03.2024)

|   | Fund  | Index |
|---|-------|-------|
| MSCI ESG Fund Rating (AAA-CCC)                        | AA    | N/R   |
| Weighted Average Carbon Intensity (tCo2e/\$M Revenue) | 109.6 | 87.1  |
| SFDR Classification                                   | 8     | N/A   |

N/A - Not Applicable  
N/R - Not Rated

### MSCI Ratings Distribution % (31.03.2024)



ESG Fund rating based on holding as at 31.01.24 with 98.8% security coverage. Carbon intensity data based on holdings as at 31.03.24 with 99.8% security coverage.

## Glossary

**MSCI ESG Fund Rating:** This shows the fund's ESG rating based on the Quality Scores given to the fund by MSCI. This ranges from AAA, AA (Leader), A, BBB, BB (Average) to B, CCC (Laggard). To be included in MSCI ESG Fund Ratings, 65% of the fund's gross weight must come from covered securities (and excluding cash), the fund's holdings date must be less than one year old and the fund must have at least ten securities.

**Weighted Average Carbon Intensity:** is calculated as the sum of each portfolio weight multiplied by the Co2e per \$M of Revenue of each holding. This metric provides a snapshot of the fund's exposure to carbon-intensive companies and includes scope 1 and scope 2 carbon emissions. For carbon data, the coverage of underlying securities must be over 50% for data to be shown.

**SFDR Classification:** Shows the classification given to each fund as part of the EU Sustainable Finance Disclosure Regulation (SFDR). Article 9 funds aim to achieve an ESG outcome and are products with ESG objectives. Article 8 funds focus on promoting ESG characteristics and this must be a primary focus of the product. Article 6 funds integrate sustainability risks (unless specified otherwise in the prospectus) into investment analysis and decision-making, without the funds promoting environmental or social characteristics or having sustainable investments as their objective.

**MSCI Ratings Distribution:** This shows the percentage distribution of ESG ratings in the fund, based on the Net Asset Value of holdings excluding cash, liquidity funds, derivatives and Exchange Traded Funds.

Information on sustainability-related aspects is provided pursuant to SFDR at <https://www.fidelity.lu/sfdr-entity-disclosures>

## Disclaimer

ESG Rating Source: ©2024 MSCI ESG Research LLC. Reproduced by permission, no further distribution. MSCI ESG Research LLC and its affiliates (the "ESG Parties"), obtain information from sources they consider reliable, none of the ESG Parties warrants or guarantees the originality, accuracy and/or completeness of any data herein. None of the ESG Parties makes any express or implied warranties of any kind, and the ESG Parties hereby expressly disclaim all warranties of merchantability and fitness for a particular purpose, with respect to any data herein. None of the ESG Parties shall have any liability for any errors or omissions in connection with any data herein. Further, without limiting any of the foregoing, in no event shall any of the ESG Parties have any liability for any direct, indirect, special, punitive, consequential or any other damages (including lost profits) even if notified of the possibility of such damages. The information is as at the date of production based on data provided by MSCI. There may be timing differences between the date at which data is captured and reported. For more up to date information, you can visit <https://www.msci.com/esg-fund-ratings>

Carbon Data Source: Data provided by ISS ESG. All rights in the information provided by Institutional Shareholder Services Inc. and its affiliates (ISS) reside with ISS and/or its licensors. ISS makes no express or implied warranties of any kind and shall have no liability for any errors, omissions or interruptions in or in connection with any data provided by ISS. The information is as at the date of production based on carbon data provided by ISS. There may be timing differences between the date at which data is captured and reported.

SFDR Classification is assigned by Fidelity in line with the EU Sustainable Financial Disclosure Regulation.

## Glossary / additional notes

### Volatility & Risk

**Annualised volatility:** a measure of how variable returns for a fund or comparative market index have been around their historical average (also known as “standard deviation”). Two funds may produce the same return over a period. The fund whose monthly returns have varied less will have a lower annualised volatility and will be considered to have achieved its returns with less risk. The calculation is the standard deviation of 36 monthly returns presented as an annualised number. Volatility for funds and indices are calculated independently of each other.

**Relative volatility:** a ratio calculated by comparing the annualised volatility of a fund to the annualised volatility of a comparative market index. A value greater than 1 indicates the fund has been more volatile than the index. A value less than 1 shows the fund has been less volatile than the index. A relative volatility of 1.2 means the fund has been 20% more volatile than the index, while a measure of 0.8 would mean the fund has been 20% less volatile than the index.

**Sharpe ratio:** a measure of a fund’s risk-adjusted performance, taking into account the return on a risk-free investment. The ratio allows an investor to assess whether the fund is generating adequate returns for the level of risk it is taking. The higher the ratio, the better the risk-adjusted performance has been. If the ratio is negative, the fund has returned less than the risk-free rate. The ratio is calculated by subtracting the risk-free return (such as cash) in the relevant currency from the fund’s return, then dividing the result by the fund’s volatility. It is calculated using annualised numbers.

**Annualised alpha:** the difference between a fund’s expected return (based on its beta) and the fund’s actual return. A fund with a positive alpha has delivered more return than would be expected given its beta.

**Beta:** a measure of a fund’s sensitivity to market movements (as represented by a market index). The beta of the market is 1.00 by definition. A beta of 1.10 shows that the fund could be expected to perform 10% better than the index in up markets and 10% worse in down markets, assuming all other factors remain constant. Conversely, a beta of 0.85 indicates that the fund could be expected to perform 15% worse than the market return during up markets and 15% better during down markets.

**Annualised tracking error:** a measure showing how closely a fund follows the index to which it is being compared. It is the standard deviation of the fund’s excess returns. The higher the fund’s tracking error, the higher the variability of fund returns around the market index.

**Information ratio:** a measure of a fund’s effectiveness in generating excess return for the level of risk taken. An information ratio of 0.5 shows the fund has delivered an annualised excess return equivalent to half the value of the tracking error. The ratio is calculated by taking the fund’s annualised excess return and dividing it by the fund’s tracking error.

**R<sup>2</sup>:** a measure representing the degree to which a fund’s return can be explained by the returns of a comparative market index. A value of 1 signifies the fund and index are perfectly correlated. A measure of 0.5 means only 50% of the fund’s performance can be explained by the index. If the R<sup>2</sup> is 0.5 or lower, the fund’s beta (and therefore its alpha too) is not a reliable measure (due to a low correlation between fund and index).

### Ongoing charges

The ongoing charges figure represents the charges taken from the fund over a year. It is calculated at the fund’s financial year end and may vary from year to year. For classes of funds with fixed ongoing charges, this may not vary from year to year. For new classes of funds or classes undergoing corporate actions (eg amendment to annual management charge), the ongoing charges figure is estimated until the criteria are met for an actual ongoing charges figure to be published.

The types of charges included in the ongoing charges figure are management fees, administration fees, custodian and depositary fees and transaction charges, shareholder reporting costs, regulatory registration fees, Directors fees (where applicable) and bank charges.

It excludes: performance fees (where applicable); portfolio transaction costs, except in the case of an entry/exit charge paid by the fund when buying or selling units in another collective investment undertaking.

For more information about charges (including details of the fund’s financial year end), please consult the charges section in the most recent Prospectus.

### Historic yield

The historic yield for a fund is based on its dividends declared over the preceding 12 months. It is calculated by summing the dividend rates declared in that period, divided by the price as at the date of publication. Declared dividends may not be confirmed and may be subject to change. Where 12 months of declared dividend data does not exist a historic yield will not be published.

### Sector/industry classification

**GICS:** The Global Industry Classification Standard is a taxonomy mainly used across MSCI and S&P indices in which each company is assigned by its principal business activity to one of 11 sectors, 24 industry groups, 69 industries and 158 sub-industries. More information is available at <http://www.msci.com/gics>

**ICB:** The Industry Classification Benchmark is a taxonomy mainly used across FTSE Russell indices in which each company is assigned by its principal business activity to one of 11 industries, 20 supersectors, 45 sectors and 173 subsectors. More information is available at <https://www.ftserussell.com/data/industry-classification-benchmark-icb>

**TOPIX:** Tokyo stock Price Index, commonly known as TOPIX, is a stock market index for the Tokyo Stock Exchange (TSE) in Japan, tracking all domestic companies of the exchange’s First Section. It is calculated and published by the TSE.

**IPD** means the Investment Property Databank who are a provider of performance analysis and benchmarking services for investors in real estate. IPD UK Pooled Property Funds Index – All Balanced Funds is a component of the IPD Pooled Funds Indices which is published quarterly by IPD.

### Independent Assessment

**Primary share class:** is identified by Morningstar when the analysis calls for only one share class per fund to be in the peer group. It is the share class Morningstar recommends as the best proxy for the portfolio for the relevant market and category/GIF combination. In most cases the share class chosen will be the most retail version (based upon actual management charge, inception date, distribution status, currency and other factors) unless a share class that is less retailed focused has a much longer track record. It is different to the oldest share class data point in that it is on an available for sale level and not all markets will have the oldest share class for sale in that region. The Primary share class is also based on category so each available for sale/category combination for the fund will have its own primary share class.

**Portfolio Turnover Rate (PTR) and Portfolio Turnover Cost (PTC), where shown:** SRDII does not define a methodology for these values; ours is as follows: **PTR** = (purchases of securities + sales of securities) minus (subscriptions of units + redemptions of units), divided by average fund value over the prior 12 months multiplied by 100. Any funds’ trading in Fidelity Institutional Liquidity Funds is excluded from the PTR calculation. **PTC** = PTR (capped at 100%) x transaction cost, where transaction cost is calculated as ex-post (i.e. prior 12 months) MiFID disclosure of portfolio transaction costs minus implicit costs.



## Important Information

This is a marketing communication. This information must not be reproduced or circulated without prior permission.

Fidelity only offers information on products and services and does not provide investment advice based on individual circumstances, other than when specifically stipulated by an appropriately authorised firm, in a formal communication with the client.

Fidelity International refers to the group of companies which form the global investment management organisation that provides information on products and services in designated jurisdictions outside of North America. This communication is not directed at, and must not be acted upon by persons inside the United States and is otherwise only directed at persons residing in jurisdictions where the relevant funds are authorised for distribution or where no such authorisation is required.

Unless otherwise stated all products are provided by Fidelity International, and all views expressed are those of Fidelity International. Fidelity, Fidelity International, the Fidelity International logo and F symbol are registered trademarks of FIL Limited. FIL Limited assets and resources as at 28/02/2023 - data is unaudited. Research professionals include both analysts and associates. The performance figures shown do not take into account the fund's Initial Charge. If you took an initial charge of 5.25% from an investment, this is the equivalent of reducing a growth rate of 6% per annum over 5 years to 4.9%. This is the highest initial charge applicable, if the initial charge you pay is less than 5.25%, the impact on the overall performance will be less.

Fidelity Funds "FF" is an open-ended investment company (UCITS) established in Luxembourg with different classes of shares. FIL Investment Management (Luxembourg) S.A. reserves the right to terminate the arrangements made for the marketing of the sub-fund and/ or its shares in accordance with Article 93a of Directive 2009/65/EC and Article 32a of Directive 2011/61/EU. Prior notice of this cessation will be made in Luxembourg.

Morningstar annualised growth rates, total return, sector median performance and ranks - Data Source - © 2024 Morningstar, Inc. All Rights Reserved. The information contained herein: (1) is proprietary to Morningstar and/or its content providers; (2) may not be copied or distributed; and (3) is not warranted to be accurate, complete or timely. Neither Morningstar nor its content providers are responsible for any damages or losses arising from any use of this information.

This share class is registered and distributed in the following locations: Austria, Belgium, Czech Republic, Denmark, Finland, France, Germany, Hungary, Liechtenstein, Luxembourg, Malta, Netherlands, Norway, Poland, Slovakia, Spain, Sweden, Switzerland, United Kingdom.

We recommend that you obtain detailed information before taking any investment decision on the basis of the current prospectus and KID (key information document), along with the current annual and semi-annual reports free of charge through <https://www.fidelityinternational.com>, from our distributors, from your financial advisor or from the branch of your bank and from our European Service Centre in Luxembourg, FIL (Luxembourg) S.A. 2a, rue Albert Borschette BP 2174 L-1021 Luxembourg. Issued by FIL (Luxembourg) S.A., authorised and supervised by the CSSF (Commission de Surveillance du Secteur Financier). Investors/ potential investors can obtain information on their respective rights regarding complaints and litigation on your local Fidelity website which can be accessed via the following link <https://www.fidelityinternational.com> (Products & services) by selecting your country of residence. All documentation and information will be in the local or an accepted European language of the country selected.

Documentation can also be obtained from the following paying agents/distributors: **Austria** - UniCredit Bank Austria AG, Schottengasse 6-8, 1010 Vienna., **Czech Republic** - UniCredit Bank Czech Republic a.s., Zeletavská 1525/1, 14092 Prag 4 - Michle, Czech Republic., **Hungary** - Raiffeisenbank Zentralbank Österreich AG, Akademie u. 6, 1054 Budapest., **Liechtenstein** - VP Bank AG, Aulestrasse 6, 9490 Vaduz., **Slovakia** - UniCredit Bank Slovakia, a.s., Sancova 1/A 81333, Slovakia., **Switzerland** - BNP Paribas, Paris, succursale de Zurich, Selnastrasse 16, 8002 Zurich.

**France** : Issued by FIL Gestion, a portfolio management company approved by the AMF under the number GP03-004, 21 avenue Kleber, 75116 Paris.

**Germany** : For German Wholesale clients issued by FIL Investments Services GmbH, Kastanienhöhe 1, 61476 Kronberg im Taunus. For German Institutional clients issued by FIL (Luxembourg) S.A., 2a, rue Albert Borschette BP 2174 L-1021 Luxembourg. For German Pension clients issued by FIL Finance Services GmbH, Kastanienhöhe 1, 61476 Kronberg im Taunus.

**Malta** : Fidelity Funds are promoted in Malta by Growth Investments Ltd in terms of the EU UCITS Directive and Legal Notices 207 and 309 of 2004. The Funds are regulated in Luxembourg by the Commission de Surveillance du Secteur Financier. Issued by FIL (Luxembourg) S.A.

**Netherlands** : The fund is authorised to offer participation rights in The Netherlands pursuant to article 2:66 (3) in conjunction with article 2:71 and 2:72 Financial Supervision Act.

**Poland** : This material does not constitute a recommendation within the meaning of the Regulation of the Polish Minister of Finance Regarding Information Constituting Recommendations Concerning Financial Instruments or Issuers Thereof dated October 19, 2005. No statements or representations made in this document are legally binding on Fidelity or the recipient and not constitute an offer within the meaning of the Polish Civil Code Act of 23 April 1964.

**Spain** : Fidelity Funds and Fidelity Active Strategy (FAST) are open-ended collective investment schemes incorporated in Luxembourg. The distributing and depositary entities are, respectively, FIL (Luxembourg) S.A. and Brown Brothers Harriman (Luxembourg) S.C.A. Fidelity Funds and FAST are registered for marketing in Spain in the register of Foreign Collective Investment Undertakings of the CNMV under registration numbers 124 and 649 respectively, where detailed information on the local distributors can be obtained.

**Switzerland** : Fidelity undertakes the financial services of purchasing and/or selling financial instruments within the meaning of the Financial Services Act ("FinSA"). Fidelity is not required to assess the appropriateness and suitability under FinSA. Issued by FIL Investment Switzerland AG.

**United Arab Emirates** : For the United Arab Emirates, the DIFC branch of FIL Distributors International Limited, is regulated by the DFSA for the provision of Arranging Deals in Investments only. All communications and services are directed at Professional Clients and Market Counterparty only (as defined in the DFSA rulebook). Persons other than Professional Clients and Market Counterparties, such as Retail Clients, are NOT the intended recipients of our communications or services. This document contains information that makes reference to a Fund which is not subject to any form of regulation or approval by the Dubai Financial Services Authority ("DFSA"). The DFSA has no responsibility for reviewing or verifying any Prospectus or other documents in connection with this Fund. Accordingly, the DFSA has not approved this Prospectus or any other associated documents nor taken any steps to verify the information set out in this Prospectus and has no responsibility for it. Collective Investment Rules (CIR) 134 CIR/VER30/02-21. The Units to which this Prospectus relates may be illiquid and/or subject to restrictions on their resale. Prospective purchasers should conduct their own due diligence on the Units. If you do not understand the contents of this document, you should consult an authorised financial adviser.

CSO4925 CL1305901/NA English 29749 T1a