



# CANDRIAM SUSTAINABLE EQUITY WORLD

REPORTING 28|02|2022

Share Class: I (EUR)



OVERALL  
MORNINGSTAR RATING  
TM

Lower Risk Higher Risk

Potentially lower return Potentially higher return



RISK AND REWARD  
PROFILE

The risk level shown reflects the fund's historical volatility, completed where applicable by that of its reference framework. The volatility indicates the extent to which the value of the fund may fluctuate upwards or downwards.

- The indicated category may vary over time.
- The historical data give no indication of a future risk profile.
- The lowest category does not mean "risk-free".
- There is no guarantee or mechanism to protect the capital.



Candriam Sustainable Equity World is in top 32 % percentile (as of 31 December 2021)

MORNINGSTAR  
SUSTAINABILITY  
RATING



(1)

SRI Label

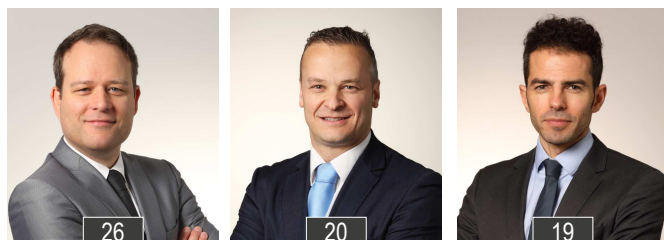


**THINK**  
BEFORE PRINTING

PAGES 1 / 9 FOR PROFESSIONAL INVESTORS ONLY

Nota bene: Even if the subfund is awarded the label, it does not mean that the same subfund meets your sustainability objectives or that the label will be compliant with the requirements of future national or European regulations. For further information, please go to [www.fsma.be/fr/finance-durable](http://www.fsma.be/fr/finance-durable).

**CANDRIAM**  
A NEW YORK LIFE INVESTMENTS COMPANY



Bart Goosens

Global Head of Quantitative Equity Management Team

Tanguy Cornet

Deputy Head of Quantitative Equity Management Team

Dave Benichou

Senior Fund Manager / Senior Equity Analyst

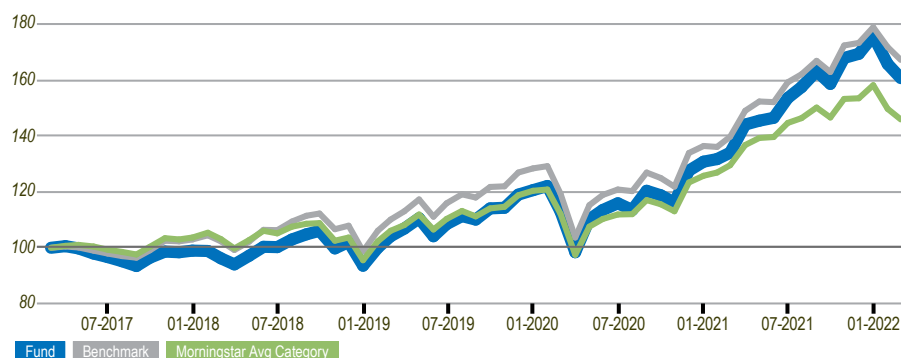
Years of experience

## INVESTMENT STRATEGY

Candriam Sustainable Equity World, a sub-fund of the Candriam Sustainable sicav, invests worldwide in companies stocks which are, within their sector, best-in-class (top 50%) in terms of successfully integrating social, environmental and corporate governance concerns into their business models and their stakeholder management. Moreover, eligible portfolio holdings must act in accordance with the United Nations Global Compact's ten principles and must not be involved in the arms industry. The fund's sustainable investment objective is to reduce greenhouse gas emissions whilst also seeking to achieve a long term positive impact on social and environmental dimensions. The investment horizon is 6 years. The fund is managed actively, with reference to the benchmark mentioned on the section "characteristics". For further information about this benchmark and its use, please consult the fund's key investor information document (KIID).

## PERFORMANCE (1)

	1 month	3 months	YTD	1 year	3 years	5 years
<b>Fund</b>	<b>-3.0%</b>	<b>-5.1%</b>	<b>-8.6%</b>	<b>19.9%</b>	<b>54.4%</b>	<b>60.6%</b>
Benchmark	-2.7%	-3.5%	-6.5%	19.7%	52.0%	67.1%
	-0.3%	-1.6%	-2.1%	0.2%	2.4%	-6.5%
	2021	2020	2019	2018	3 years annualized	5 years annualized
<b>Fund</b>	<b>34.4%</b>	<b>8.4%</b>	<b>28.9%</b>	<b>-5.5%</b>	<b>15.6%</b>	<b>9.9%</b>
Benchmark	31.1%	6.3%	30.0%	-4.1%	15.0%	10.8%
	3.4%	2.1%	-1.1%	-1.3%	0.6%	-0.9%



(1) Past Performances shown on this page are not an indicator of future performances and are not constant over time. See important disclosures on performance under the section 'warning' in the 'Important Information' on page 4. NAVs are net of fees and are provided by the accounting department and the reference index by official providers.

## FUND CHARACTERISTICS

Inception Date	23/03/2017
Fund Domicile	Luxembourg
Fund Legal Form	SICAV
Benchmark	MSCI World NR
Total net assets (M EUR)	1,165.60
NAV per share cap.(EUR) (C)	595.55
NAV per share dis.(EUR) (D)	2,743.47
Fund Reference Currency	EUR
NAV Calculation	Daily
Morningstar™ Category	EAA Fund Global Large-Cap Blend Equity
ISIN Code (C)	LU1434527781
ISIN Code (D)	LU1434527864
Ticker Bloomberg (C)	CSEWICE LX Equity
Ticker Bloomberg (D)	CSEWICE LX Equity
Latest Dividend Distributed	37.14 (2021-05-06)
Dealing Cut Off	D<12:00
Antidilution Mechanisms	Yes
Custodian Bank	CACEIS Bank, Luxembourg Branch
Management Company	Candriam Luxembourg

## STATISTICS

	Funds	Benchmark
Equity Exposure	98.98%	100.00%
Number of Positions	187	1,542
Active Share	70.85%	-
Volatility	19.22%	19.14%
Tracking Error	2.31%	-
Sharpe Ratio	0.82	0.79
Alpha	0.58%	-
Beta	1.00	-
Price Earning Ratio	19.24	19.44
ROE	22.35%	20.92%
P/Book value	3.15	3.02
Dividend Yield	1.48%	1.85%

## ESG ASSESSMENT

<input checked="" type="checkbox"/>	<input checked="" type="checkbox"/>	<input checked="" type="checkbox"/>	<input checked="" type="checkbox"/>
Exclusion	Norm based	Positive selection	Integration

## FEES

<b>C</b>	0.55%	0.75%	-
<b>D</b>	0.55%	0.75%	-
Real Management Fee	Ongoing Charges	Performance Fees	

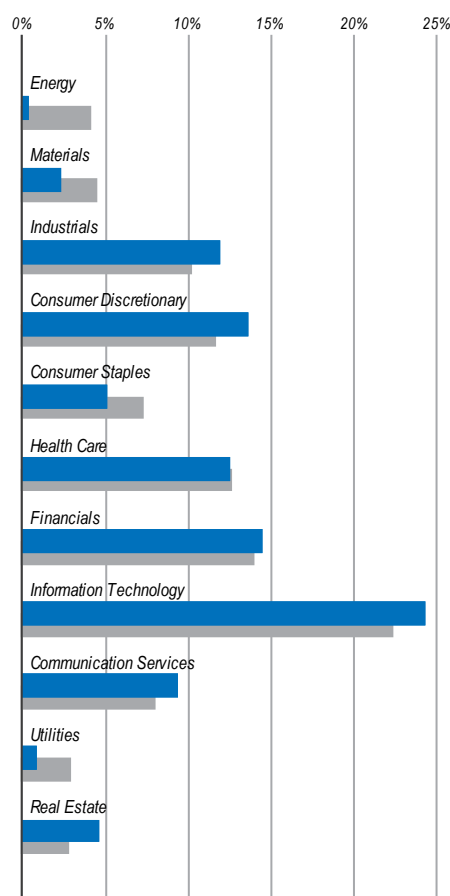
## TOP 10 ISSUERS

		% Fund	Sector	Country	% Active weight
1	MICROSOFT CORP	4.75	Information Technology	United States	+1.04
2	APPLE INC	4.38	Information Technology	United States	-0.34
3	ALPHABET INC	4.37	Communication Services	United States	+1.61
4	PROCTER & GAMBLE CO/THE	1.55	Consumer Staples	United States	+0.89
5	MCDONALD'S CORP	1.47	Consumer Discretionary	United States	+1.15
6	NVIDIA CORP	1.41	Information Technology	United States	+0.35
7	ACCENTURE PLC	1.30	Information Technology	United States	+0.95
8	WALT DISNEY CO/THE	1.25	Communication Services	United States	+0.78
9	COSTCO WHOLESALE CORP	1.19	Consumer Staples	United States	+0.80
10	ROYAL BANK OF CANADA	1.18	Financials	Canada	+0.90

## TOP 10 COUNTRIES

	Country	% Fund	% Bench	% Active weight
1	United States	67.02	68.50	-1.48
2	Japan	8.05	6.35	+1.70
3	United Kingdom	4.72	4.32	+0.40
4	Canada	4.70	3.51	+1.19
5	Germany	2.36	2.39	-0.03
6	Netherlands	2.31	1.24	+1.07
7	France	2.28	3.22	-0.94
8	Denmark	1.88	0.73	+1.15
9	Australia	1.55	2.07	-0.53
10	Switzerland	1.29	2.89	-1.60

## SECTOR ALLOCATION

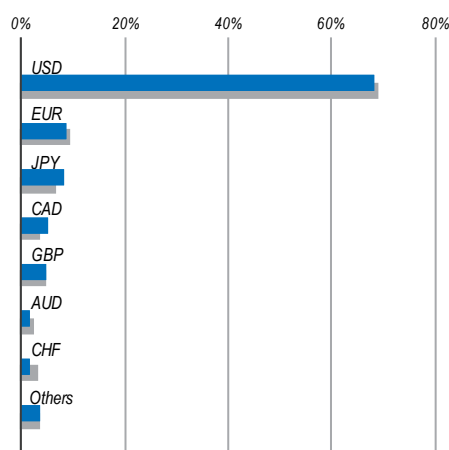


Legend

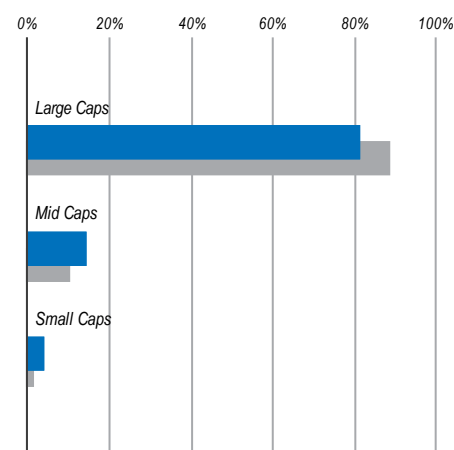
Fund

Benchmark

## CURRENCY ALLOCATION



## MARKET CAPITALISATION



## SCR

## SOLVENCY CAPITAL REQUIREMENT

-39.85%      -0.18%

SCR Equities Type 1      SCR Equities Type 2

-0.31%      -22.48%

SCR Concentration      SCR Currency

-50.53%

Market SCR



## GLOSSARY

### EXPOSURE

The Exposure of a fund is expressed as a percentage of total portfolio holdings, taking into account the leverage of derivative instruments. It represents the amount an investor can lose from the risks unique to a particular investment. The Equity Exposure is the sum of exposures to equity instruments, including derivatives.

### VOLATILITY\*

The Volatility is the statistical measure of dispersion of returns for a fund around the mean. A higher volatility means that a fund's value can potentially be spread out over a larger range of values and makes the fund a riskier investment.

### SHARPE RATIO\*

The Sharpe Ratio measures the level of compensation an investment in the fund offered for the risk taken. It is calculated by subtracting the risk-free rate from the return of the fund and dividing that result by the volatility. The higher the Sharpe ratio the better, a negative ratio has no significance other than that the fund underperformed the risk-free rate.

### TRACKING ERROR\*

The Tracking Error is a statistical measure of dispersion of the excess returns of the fund around the mean, making it the volatility of the difference between the fund's return and its reference index return. A higher tracking error indicates a higher deviation from the reference index.

### BETA

Beta measures the sensitivity of fund returns to changes in returns of its reference index. A beta greater than 1 indicates the fund is more volatile, thus more risky than the reference index.

### ALPHA

Alpha represents the performance of a fund relative to its reference index, it is often considered to represent the value that a portfolio manager adds to or subtracts from a fund's return. It is the return on a fund that is not a result of general movement in the greater market.

\* based on weekly data over 3 Years (1 year if too little history)

### NUMBERS OF POSITIONS

The Number of Positions represents the total number of instruments in position.

### ACTIVE SHARE

It is calculated by taking the sum of the absolute value of the differences of the weight of each holding in the fund and the weight of each holding in the reference index and dividing by two. The greater the difference between the composition of the fund and its reference index, the greater the active share.

### P/E RATIO

The Price/Earnings Ratio of a fund is calculated by dividing the market value of the fund by the total amount of the underlying company's realized earnings per share. Index derivatives are excluded.

### P/BOOK VALUE

The Price/Book Value of a fund is calculated by dividing the market value of the fund by the total amount of the underlying company's published book value per share. Index derivatives are excluded.

### RETURN ON EQUITY (ROE)

The Return on Equity is a measure of the profitability. For a fund this is calculated as the average of the underlying company's realized earnings per share divided by their published book value per share. Index derivatives are excluded.

### DIVIDEND YIELD

The Dividend Yield of a fund is determined by dividing the total amount of the annual dividends received for all shares in the fund by the current market value of the fund. Index derivatives are excluded.

### SCR (Solvency Capital Requirement)

Market SCR represents an estimate of the capital charge for market risk, broken down into risk sub-modules (Interest rate, Spread, Equity...), which is applicable to insurers under Solvency 2 Directive. Candriam calculations are based on the standard formula as provided by the regulation.

### OCF

The Ongoing Charges Figure (OCF) informs the investor on the total annual cost of investing within the fund and is comprised of all annual charges & other payments.

### REAL MANAGEMENT FEES

The Real Management Fee is the actual percentage charge deducted from the fund's average net assets.

### PERFORMANCE FEE

The Performance Fee refers to a charge on any returns that the Fund achieves above the reference index. Please refer to the Prospectus for further information.

### ESG ASSESSMENT – EXCLUSION

The Exclusion filter refers to the exclusion of companies involved in harmful or controversial activities. Involvement is assessed using activity-specific revenue-based threshold levels.

### ESG ASSESSMENT – NORMS-BASED

The Norms-Based analysis excludes companies which are in violation of the 10 principles of the United Nations Global Compact (UNGC). These principles cover 4 main categories: Human Rights, Labour Rights, Environment and Anti-Corruption.

### ESG ASSESSMENT – POSITIVE SELECTION

The Positive selection analysis is inclusive, not exclusive. It includes only the companies with the best ESG score, obtained by evaluating their ability to manage the sustainable development issues based on a combination of specific factors material to each sector.

### ESG ASSESSMENT – INTEGRATION

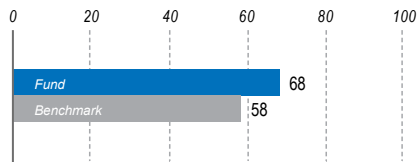
The Integration of ESG factors into investment decisions consists of integrating specific extra-financial factors into the financial valuation or credit assessment of securities. The factors used are selected based on their materiality in the given asset class.

## EXTRA-FINANCIAL REPORTING

Hereinafter Candriam presents a series of sustainability indicators related to the fund and benchmark holdings in companies (equity holdings and/or corporate bond holdings).

### OVERALL SUSTAINABILITY SCORE

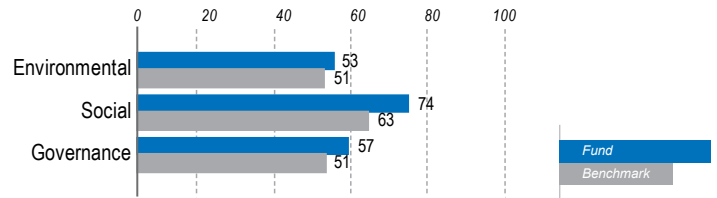
#### OVERALL COMPANY ESG SCORE



Score goes from 0 (worst) to 100 (best).

Coverage Rate (Fund/Benchmark): 92.7% / 92.7%

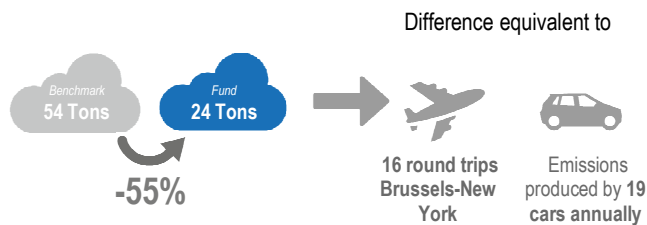
#### COMPANY E-S-G SCORES



### COMPANY IMPACT INDICATORS



#### CARBON FOOTPRINT



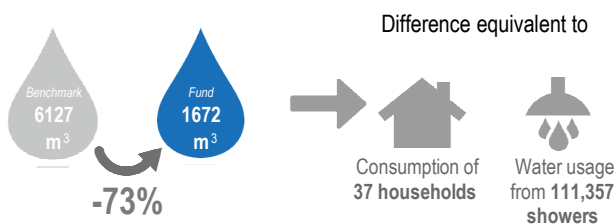
(Tons CO<sub>2</sub>eq per million € invested in fund/benchmark)

Source: Candriam, Trucost

Coverage Rate (Fund/Benchmark): 99.5% / 98.8%



#### WATER CONSUMPTION



(cubic meter of water per million € invested in fund/benchmark)

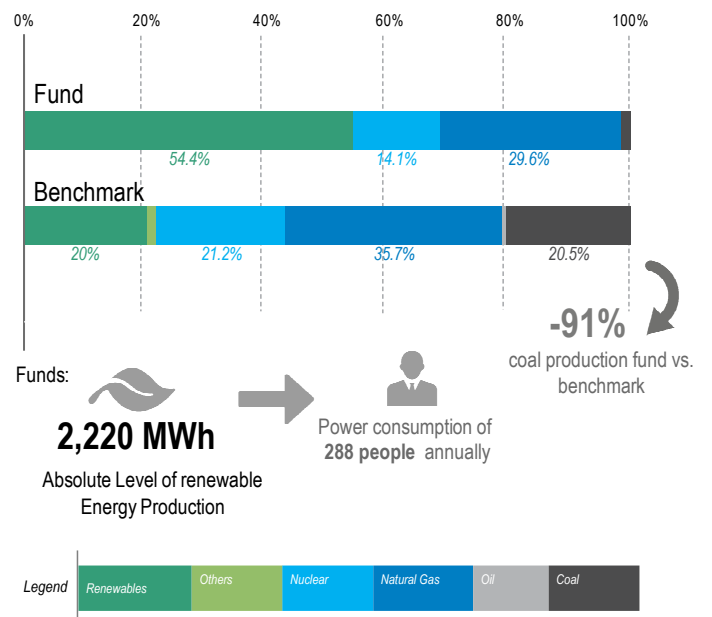
Source: Candriam, Trucost

Coverage Rate (Fund/Benchmark): 99.5% / 98.8%



#### ENERGY MIX

The Energy Mix of a portfolio refers to the mix (percentage-wise) of underlying energy sources used to generate electrical power by the underlying power generation companies within a portfolio.

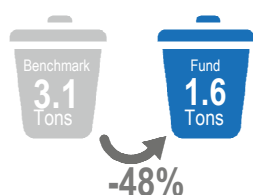


Source: Candriam, Trucost

Coverage Rate (Fund/Benchmark): 0.5% / 4.2%



#### WASTE GENERATION



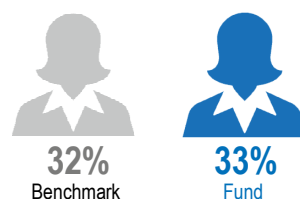
(Tons of waste per million € invested in fund/benchmark)

Source: Candriam, Trucost

Coverage Rate (Fund/Benchmark): 99.5% / 98.8%



#### PERCENTAGE OF WOMEN ON THE BOARD

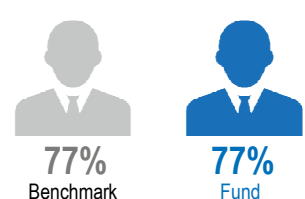


Source: Candriam, MSCI

Coverage Rate (Fund/Benchmark): 98.8% / 98.6%



#### PERCENTAGE OF INDEPENDENT BOARD MEMBERS



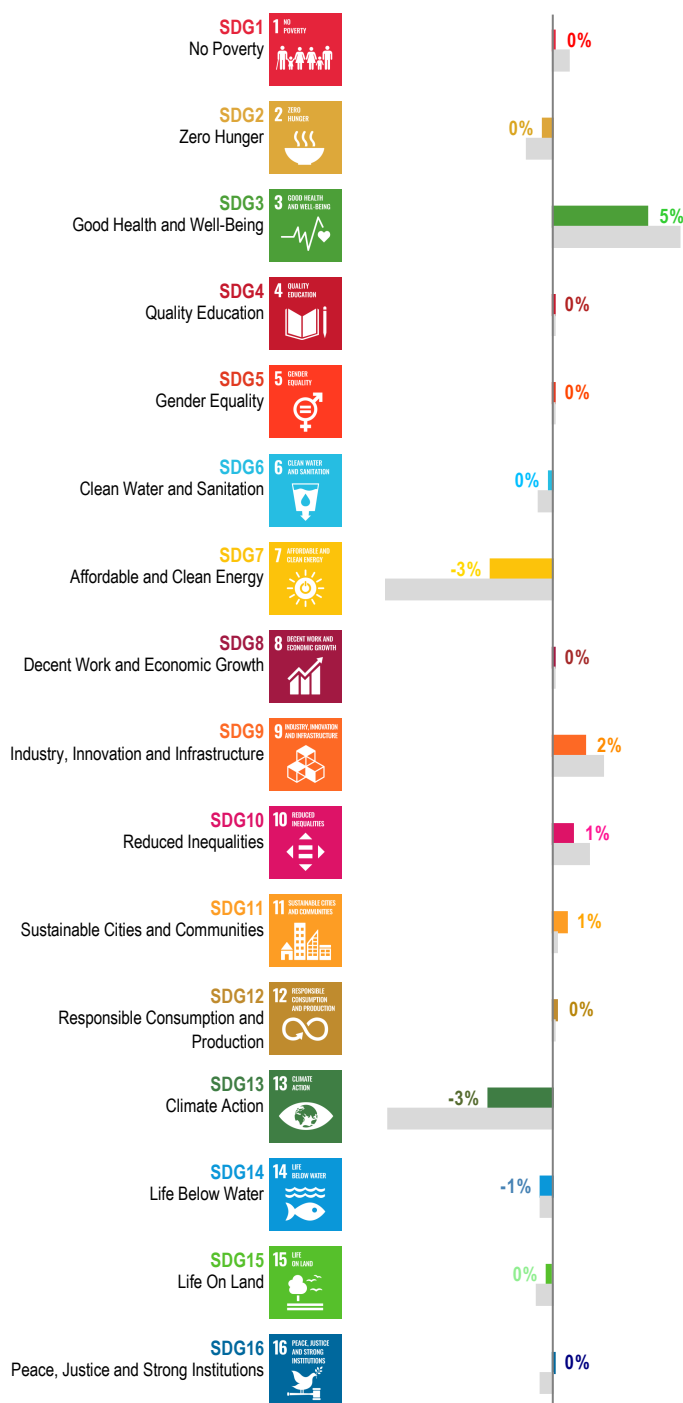
Source: Candriam, ISS-Oekom

Coverage Rate (Fund/Benchmark): 97.9% / 98.5%

## COMPANY CONTRIBUTIONS TO SUSTAINABLE DEVELOPMENT GOALS

The Sustainable Development Goals (SDGs) are a collection of 17 global goals set by the United Nations General Assembly in 2015, to be achieved by year 2030. Through their activities, companies can directly contribute to the achievement of a number of these goals; by means of their employment policies, products and services, governance and by the way they integrate environmental and social goals into their operations. SDG 17 is not included in this table. The purpose of SDG 17 is to support and create partnerships around the first 16 SDGs. Companies are therefore best able to support SDG 17 by contributing to the first 16 SDGs directly.

Weighted Percentage of company revenues contributed to UN SDG on a net basis.



Color

Funds

Benchmark

Source: Candriam, ISS-Oekom  
Coverage Rate (Fund/Benchmark): 96.7% / 97.7%

## TOP 10 SDG CONTRIBUTORS

Company name	Percentage revenue contribution to top SDG	Other important contributions
CSL LTD	100%	3 GOOD HEALTH AND WELL-BEING
ASTRAZENECA PLC	100%	3 GOOD HEALTH AND WELL-BEING
IONIS PHARMACEUTICALS INC	100%	3 GOOD HEALTH AND WELL-BEING
VERTEX PHARMACEUTICALS INC	100%	3 GOOD HEALTH AND WELL-BEING
ELI LILLY & CO	100%	3 GOOD HEALTH AND WELL-BEING
INCYTE CORP	100%	3 GOOD HEALTH AND WELL-BEING
HALOZYME THERAPEUTICS INC	100%	3 GOOD HEALTH AND WELL-BEING
NOVO NORDISK A/S	100%	3 GOOD HEALTH AND WELL-BEING
AMERICAN WATER WORKS CO INC	100%	6 CLEAN WATER AND SANITATION, 3 GOOD HEALTH AND WELL-BEING
ALIGN TECHNOLOGY INC	94%	3 GOOD HEALTH AND WELL-BEING

## SUMMARY COMPANY ESG DATA

Indicator	Metric	Source	Fund	Benchmark
Carbon Footprint	Tons CO2eq/million € invested	Candriam, Trucost	24	54
Carbon Intensity	Tons CO2eq/million € revenues	Candriam, Trucost	81	179
Weighted Average Carbon Intensity	Tons CO2eq/million € revenues	Candriam, Trucost	68	167
Renewable energy production	Total Mwatt/h	Candriam, Trucost	2220	8819
Water Consumption	M3 water/million € invested	Candriam, Trucost	1672.47	6126.74
Water intensity	M3 water/million € revenues	Candriam, Trucost	5558	20179
Board gender diversity	Board Gender Diversity	Candriam, MSCI	53%	51%
Board Independence	Percentage independent Board members	Candriam, ISS-Oekom	77%	77%
Biodiversity programmes	Score from 0 to 100 (100 is best)	Candriam, Sustainalytics	42.18	64.73
Employee fatality rate	Score from 0 to 100 (100 is best)	Candriam, Sustainalytics	56.74	61.21
Collective bargaining agreements	Score from 0 to 100 (100 is best)	Candriam, Sustainalytics	20.74	24.87
Bribery & corruption policy	Score from 0 to 100 (100 is best)	Candriam, Sustainalytics	70.33	69.30
Money laundering policy	Score from 0 to 100 (100 is best)	Candriam, Sustainalytics	64.68	64.15

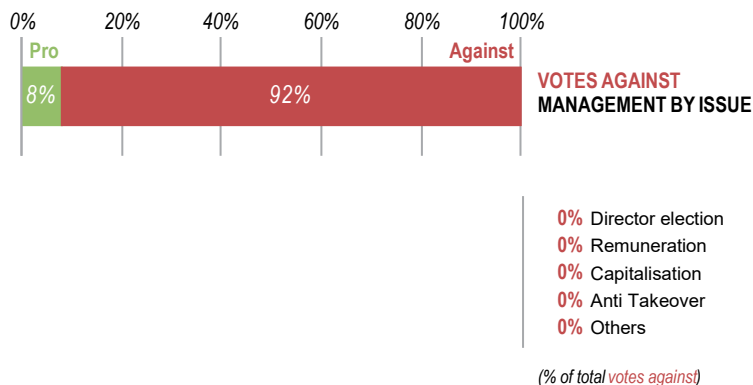
## VOTING POLICIES

### EXERCISE OF VOTING RIGHTS:

Over the course of the last 4 quarters, **Candriam voted at 263 general meetings** on behalf of the fund and **voted against at least one resolution in 242 general meetings**. Candriam has engaged with companies since 2003 through an increasingly active proxy-voting policy that upholds the principle of good corporate governance and sustainable development.

For more information regarding our ESG policy, please visit our webpage:  
[www.candriam.com/en/professional/market-insights/sri-publications](https://www.candriam.com/en/professional/market-insights/sri-publications)

### MEETINGS WITH AT LEAST ONE VOTE AGAINST MANAGEMENT



## CONTROVERSIAL ACTIVITIES NORMS-BASED ANALYSIS

8.5% of companies within the Benchmark are excluded due to Norms-Based analysis and/or controversial activities

**Candriam's Norms-Based Analysis** excludes companies which are in violation of the ten principles of the United Nations Global Compact.

Human Rights	Labour Rights	Environment	Anti-Corruption
--------------	---------------	-------------	-----------------

**Candriam controversial activities analysis** excludes companies involved in harmful or controversial activities. The details of Candriam's controversial activity are available on the Management Company's website via the link:  
<https://www.candriam.com/en/professional/market-insights/sri-publications>

## GLOSSARY

### COMPANY CARBONFOOTPRINT METRICS

Carbon Footprint Metrics of an investment portfolio refers to measurement of greenhouse gas (GHG) emissions by summing the proportional GHG emissions of the underlying holdings, proportional to the share of ownership.

tCO<sub>2</sub>-eq: Carbon dioxide (CO<sub>2</sub>) is the most common GHG emitted by human activities, in terms of the quantity released and the total impact on global warming. As a result the term "CO<sub>2</sub>" is sometimes used as a shorthand expression for all greenhouse gases. A portfolio's carbon footprint is measured in tonnes of carbon dioxide equivalent (tCO<sub>2</sub>-eq) which allows to bundle the various greenhouse gas emissions in a single number. For any quantity and type of greenhouse gas, CO<sub>2</sub>-eq signifies the amount of CO<sub>2</sub> which would have the equivalent global warming impact.

Scope 1, 2 and 3: The international GHG Protocol classifies a company's GHG emissions into three 'scopes':

- Scope 1 emissions are direct emissions from owned or controlled sources
- Scope 2 emissions are indirect emissions from the generation of purchased energy
- Scope 3 emissions are all indirect emissions (not included in scope 2) that occur in the value chain of the reporting company, including both upstream and downstream emissions

All Carbon Footprint Metrics analysed in this report are based on both Scope 1 and Scope 2 data sourced from the specialist data-provider "Trucost". Good quality Scope 3 data currently does not exist because of the complexity to measure and control upstream and downstream value chain data. That also entails that so-called 'avoided emissions' are excluded from the Carbon Footprinting analytics.

Carbon Footprint Metrics: One can distinguish between four Carbon Footprint Metrics:

- (1) Total Carbon Emissions
- (2) (Normalized) Carbon Emissions
- (3) (Normalized) Carbon Intensity
- (4) Weighted Average Carbon Intensity (WACI)

(1) Total Carbon Emissions: measures the total GHG emissions of a portfolio in the most literal sense by summing all the GHG emissions of the underlying holdings, proportional to the share of ownership. The dependence of this measure to a portfolio's specific size makes this metric of limited usefulness for benchmarking and comparison purposes.

(2) (Normalized) Carbon Emissions: measures the asset weighted carbon emissions of a portfolio normalized per million \$ invested (expressed in tCO<sub>2</sub>-eq / million \$ invested).

(3) (Normalized) Carbon Intensity: measures the asset weighted carbon emissions of a portfolio normalized per million \$ of revenue (expressed in tCO<sub>2</sub>-eq / million \$ revenues). This metric provides an indication of the amount of GHG emitted by the holdings in a portfolio to generate 1 million \$ of revenue.

(4) The Weighted Average Carbon Intensity (WACI) is the sum product of the portfolio's holdings weights and Carbon Intensities, where holdings' Carbon Intensities are calculated as the company's total carbon emissions divided by the company's total revenues.

### CARBON EMISSIONS SAVINGS

The "difference equivalent to" compares to the equivalent emissions from both commercial flights and family cars. For commercial flights, it is expressed in the number of return-flights from Brussels to New York in economy class. For family cars, it is expressed in the number of cars based on 13 000 km per year by cars emitting 120g CO<sub>2</sub> per km on average (Source: Eurostat).

### WATER CONSUMPTION

Measures the asset weighted water consumption of a portfolio normalized per million \$ invested (expressed in cubic meters water / million \$ invested). Data sourced from "Trucost", does not include the supply of drinkable water and the wastewater that enters in the company's facility to be treated.

The "difference equivalent to" compares to the equivalent consumption from both the average household and number of showers. For households, it assumes an average daily consumption of 144 litres per person with 2.3 person per household. For showers, it assumes an average consumption of 40 litres per shower.

### WATER INTENSITY (M3/MIO USD REVENUES)

Measures the asset weighted water consumption of a portfolio normalized per million \$ of revenue (expressed in cubic meters water / million \$ revenues). This metric provides an indication of the amount of water consumed by the companies in a portfolio to generate 1 million \$ of revenue. Data sourced from "Trucost", does not include the supply of drinkable water and the wastewater that enter in the company's facility to be treated.

### WASTE GENERATION

Measures the asset weighted waste production of a portfolio normalized per million \$ invested (expressed in tons of waste / million \$ invested). Data sourced from "Trucost", waste production data includes landfill waste, incinerated waste and nuclear waste.

### ABSOLUTE LEVEL OF RENEWABLE ENERGY PRODUCTION

Measures the absolute level (i.e. not asset-weighted) of Renewable Energy Production within the Fund, expressed in MWh.

### TOP 10 SDG CONTRIBUTORS

Top 10 companies held in the Fund with the highest net contribution to a single SDG, independent from the size of the position in the Fund.

### BIODIVERSITY PROGRAMS

This indicator provides an assessment of the quality of biodiversity protection programmes within the underlying companies of a portfolio.

### MONEY LAUNDERING POLICY

This indicator provides an assessment of the quality of anti-money laundering policies within the underlying companies of a portfolio.

### BRIBERY CORRUPTION POLICY

This indicator provides an assessment of the quality of anti-bribery and -corruption policies within the underlying companies of a portfolio.

### COLLECTIVE BARGAINING AGREEMENTS

This indicator provides an assessment of the extent that company's employees are covered by collective bargaining agreements within the underlying companies of a portfolio.

### PERCENTAGE OF WOMEN ON THE BOARD

Asset weighted Percentage of Female Board Members at the companies held in portfolio.

### BOARD INDEPENDENCE

Asset weighted Percentage of Independent Board Members at the companies held in portfolio.

### EMPLOYEE FATALITY RATE

This indicator provides an assessment of the company's fatality rate in the last three years within the underlying companies of a portfolio.

### NORMS-BASED ANALYSIS

Candriam's Norms-Based Analysis excludes companies which are violation of the ten principals of the United Nations Global Compact.

### CONTROVERSIAL ACTIVITIES

Candriam's Controversial Activities Analysis excludes companies involved in harmful or controversial activities. Involvement is assessed using activity-specific revenue-based threshold levels.

### COVERAGE RATE (FUND/INDEX)

The coverage rate indicates the percentage of holdings within the Fund or within the Reference Index for which the relevant ESG data is available and analysed.



## IMPORTANT DISCLOSURES

This reporting is issued by the relevant Management Company of the group Candriam explicitly mentioned above.

This document is provided for information purposes only, it does not constitute an offer to buy or sell financial instruments, nor does it represent an investment recommendation, or confirm any kind of transaction, except where expressly agreed otherwise. Although Candriam selects carefully the data and sources within this document, errors or omissions cannot be excluded a priori. References to particular industries, sectors or companies are for general information and are not necessarily indicative of a fund's holding at any one time. Negative weightings may result from specific circumstances (including timing differences between trade and settlement dates of securities purchased by the funds) and/or the use of certain financial instruments, including derivatives, which may be used to gain or reduce market exposure and/or risk management. Allocations are subject to change. Total are not always equals to 100% due to derivatives, cash or rounding. The investor is invited to **review the description of significant risks** that are set forth in the fund's prospectus and the Key Investor Information Document. The value of investment may decline due in particular to the fund's exposure to such main risks. Such risks are not necessarily adequately taken into account in the SRRI.

Candriam cannot be held liable for any direct or indirect losses as a result of the use of this document. The intellectual property rights of Candriam must be respected all times; contents of this document may not be reproduced without prior written approval.

**Warning :** Past performances of a given financial instrument or index or an investment service, or simulations of past performances, or forecasts of future performances are not reliable indicators of future performances. Gross performances may be impacted by commissions, fees and other expenses. Performances expressed in a currency other than that of the investor's country of residence are subject to exchange rate fluctuations, with a negative or positive impact on gains. If the present document refers to a specific tax treatment, such information depends on the individual situation of each investor and may change.

Candriam consistently recommends investors to consult via our website [www.candriam.com](http://www.candriam.com) the key information document, prospectus, and all other relevant information prior to investing in one of our funds, including the net asset value ("NAV") of the funds. These documents are available either in English or in local languages for each country where the fund's marketing is approved.



© 2019 Morningstar, Inc. All rights reserved. Some of the information contained in this document is the property of Morningstar, Inc. and/or its information providers. It is given without any guarantee as to its accuracy, exhaustiveness or topicality. Its reproduction or redistribution is strictly forbidden.

### Important information in relation to the extra-financial part of this reporting:

MSCI ESG Research LLC's ("MSCI ESG") Fund Metrics products (the "Information") provide environmental, social and governance data with respect to underlying securities within more than 23,000 multi-asset class Mutual Funds and ETFs globally. MSCI ESG is a Registered Investment Adviser under the Investment Advisers Act of 1940. MSCI ESG materials have not been submitted to, nor received approval from, the US SEC or any other regulatory body. None of the Information constitutes an offer to buy or sell, or a promotion or recommendation of, any security, financial instrument or product or trading strategy, nor should it be taken as an indication or guarantee of any future performance, analysis, forecast or prediction. None of the Information can be used to determine which securities to buy or sell or when to buy or sell them. The Information is provided "as is" and the user of the Information assumes the entire risk of any use it may make or permit to be made of the Information."

©2019 S&P Trucost Limited ("Trucost"), an affiliate of S&P Global Market Intelligence. All rights reserved.

© 2019 | Institutional Shareholder Services and/or its Affiliates. This document contains information that is the property of Institutional Shareholder Services Inc. ("ISS") or its subsidiaries. The Information may not be reproduced or disseminated in whole or in part without prior written permission of ISS. ISS MAKES NO EXPRESS OR IMPLIED WARRANTIES OR REPRESENTATIONS WITH RESPECT TO THE INFORMATION.

© 2019 Sustainalytics. All rights reserved. The ownership and all intellectual property rights to some of the information contained herein are vested exclusively in Sustainalytics and/or its suppliers. No part of this website may be reproduced, disseminated, compiled, used to create derivative works, furnished in any manner, made available to third parties or published, parts hereof, or the information contained herein in any form or in any manner, be it electronically, mechanically, through photocopies or recordings without the express written consent of Sustainalytics.

### ESG investment risk

The extra financial objectives presented in this document are based on the realization of assumptions made by Candriam.

Implementing Candriam's ESG rating models does require access to various quantitative as well as qualitative data, depending on the sector and the exact activities of a given company. In some areas, such as board composition and background of the directors, data is usually available and subject to quality and accuracy checks by company auditors or regulators. In many other areas however, our ESG analysts cannot rely on the same degree of systematic availability and data reliability. Yet, the quality of the data is of the essence of the assessment of a company. These limitations do affect Candriam's ESG ratings.