

LYXOR / SANDLER US EQUITY FUND - CLASS A EUR

LYXOR ASSET MANAGEMENT

INVESTMENT OBJECTIVE

The Trading Strategy's investment objective is to achieve capital appreciation across shifting economic and market environments, through both long and short positions in equities which are mainly but not exclusively listed on North American Recognized Markets. The short exposures will be achieved only through the use of FDI.

MONTHLY COMMENTARY

During the month, long positions detracted 1.1% from performance while short positions added 0.1%, on a gross basis. At the sector level, positions in Materials added most to performance during the month, followed by positions in Financials, Consumer Staples, and Healthcare. Positions in Information Technology detracted most from performance during the month, followed by positions in Communication Services, Real Estate, Industrials and Tactical Market Indices. The Fund's delta-adjusted exposure averaged approximately 5% net long and 62% gross during the month. On a beta-adjusted basis, the Fund's exposure averaged approximately 4% net long and 74% gross. The Fund ended the month with delta-adjusted exposure of 8% net long and 65% gross.

The fund had its second consecutive challenging month to start the year, particularly in light of its net positioning. Higher quality stocks significantly underperformed lower quality stocks for the month, by as much as 9% according to some measures. The change to overall positioning during the month was minimal as Sandler Capital don't expect quality to continue to underperform if equities remain under pressure and the crises in the Ukraine certainly makes the macro outlook more uncertain and complex. The only sector in which net exposure changed by more than a point during the month was Financials, for which they reduced net short exposure by just under 2 points. They also reduced cyclical exposure slightly during the month. Beta-adjusted net exposure went up by about 5 points, but this was primarily driven by betas shifting lower for some of the more volatile short names.

FUND FACTS

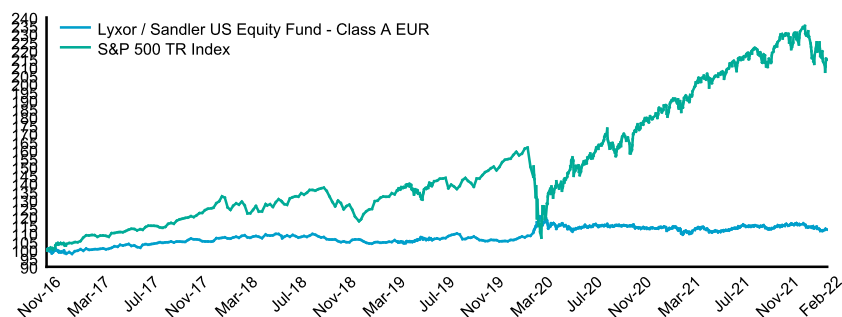
Legal Structure	Sub-Fund Of Lyxor Newcits IRL PLC
Inception Date of the Fund	November 15, 2016
Inception Date of the Class	November 15, 2016
Share Class Currency	EUR
Available Currency Classes	EUR, GBP, USD

ISIN Code	IE00BD8GKW21
Bloomberg Code	LYSDUAE ID
Investment Manager	Lyxor Asset Management S.A.S.
Sub-Investment Manager	Sandler Capital Management
Administrator	CACEIS FASTNET IRELAND LIMITED
Liquidity (1)	Daily
Subscription/Redemption Notice	On D day 10:00 AM (Dublin time)
Valuation Day	Daily

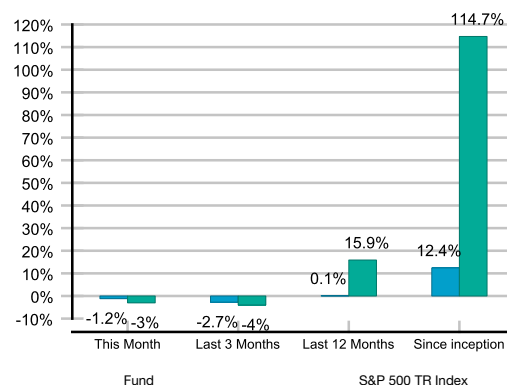
Total Fund Assets (M USD)	1,224
Management Fee (2)	Up to 2.15%
Class Performance Fee (2)	Up to 20%
Administration Fee (2) (3)	Up to 0.25%

Long Exposure	36.41%
Short Exposure	28.65%
Net Exposure (long - short)	7.75%
Gross Exposure (long + short)	65.06%

PERFORMANCE SINCE INCEPTION



PERFORMANCE ANALYSIS



HISTORICAL MONTHLY RETURNS

	Jan	Feb	Mar	Apr	May	Jun	Jul	Aug	Sep	Oct	Nov	Dec	YTD
2022	-2.02%	-1.19%											-3.18%
2021	-0.85%	0.22%	-1.29%	1.81%	-0.93%	0.27%	2.11%	-0.13%	-0.85%	1.43%	0.51%	0.47%	2.74%
2020	1.96%	1.11%	7.56%	-2.88%	0.65%	-0.55%	1.49%	-0.19%	-0.04%	-0.36%	-0.70%	-0.70%	7.23%
2019	-2.38%	0.71%	1.24%	-0.77%	1.57%	-0.22%	0.66%	2.53%	-2.28%	-1.41%	0.11%	-0.65%	-1.00%
2018	2.42%	0.34%	-0.32%	0.31%	0.84%	-0.84%	-0.41%	1.11%	-1.01%	-1.18%	-1.52%	1.59%	1.24%
2017	0.71%	0.51%	0.57%	0.61%	1.78%	-1.27%	1.37%	1.10%	0.21%	1.37%	0.12%	-1.00%	6.20%
2016											-0.67%	-0.31%	-0.98%*

* Since inception: November 15, 2016

RISK ANALYSIS

	Since inception	
	Fund	Index*
Volatility	6.31%	17.11%
Sharpe ratio	0.42	0.88
Maximum DrawDown	-9.10%	-33.12%

*S&P 500 TR Index

Official Fund NAV is calculated on a daily basis, subject to holidays & certain extraordinary events. Performance is based on the Fund's last official NAV, and the Index level as of the same day. These indicators are based upon weekly returns calculation.

IMPORTANT NOTE

Official NAV is calculated every day, subject to holidays & certain extraordinary events. Performance based on the Fund's last official NAV, and the Index level as of the same day.

The Fund complies with the UCITS Directive and has been approved by the Bank of Ireland on September 12th, 2016. Please refer to the prospectus for a full disclosure of fund characteristics.

(1) Under normal market conditions, Lyxor intends to offer the LIQUIDITY mentioned above. However, the LIQUIDITY is not guaranteed and there are circumstances under which such LIQUIDITY may not be possible. Please refer to the Fund's legal documentation for complete terms and conditions.

(2) For any additional information regarding fees, please refer to the relevant fees section of the Fund's Prospectus.

(3) The Fund is subject to an Administrative Expenses Fee at a rate of up to 0.25% of the Net Asset Value of each Class of the Fund per annum

Prospective investors should consult with their independent financial advisor with respect to their specific investment objectives, financial situation or particular needs to determine the suitability of investment. There can be no assurance that the investment objective of the Fund will be achieved and investment results may vary substantially over time. Investments in the Fund places an investor's capital at risk. The price and value of investments may fluctuate and investors may lose all or a substantial portion of their investment. Past performance is not indicative of future results. PAST PERFORMANCE IS NOT A RELIABLE INDICATOR OF FUTURE RESULTS

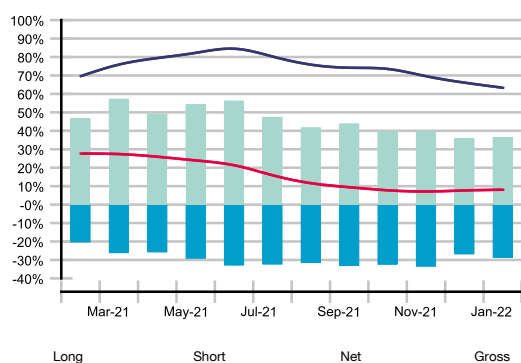
Source: Lyxor Asset Management

CONTACT LYXOR | +33 (0)142133131 | lyxor-crm@lyxor.com | www.lyxor.com

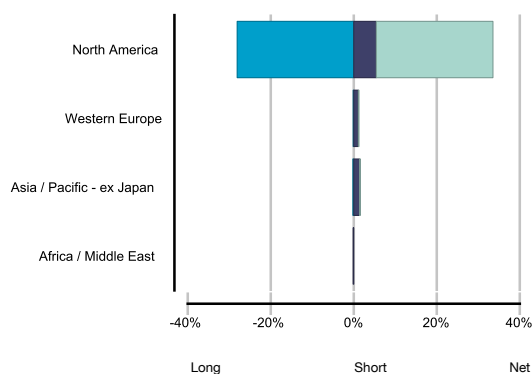
LYXOR / SANDLER US EQUITY FUND - CLASS A EUR

LYXOR ASSET MANAGEMENT

MONTHLY STRATEGY EXPOSURE FOR LAST 12 MONTHS

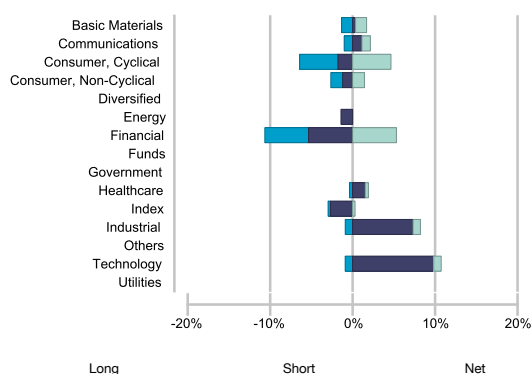


GEOGRAPHICAL BREAKDOWN

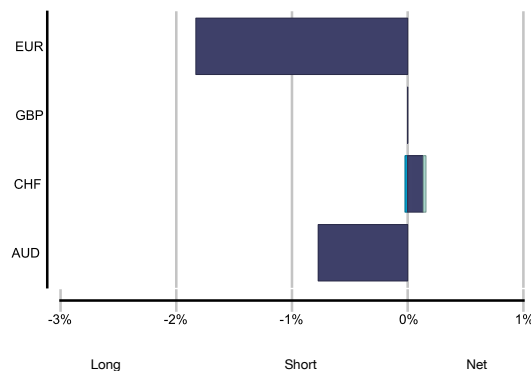


The geographic classification of a security depends on the location of the issuer's main business activity. Treasury securities are categorized according to the issuing country.

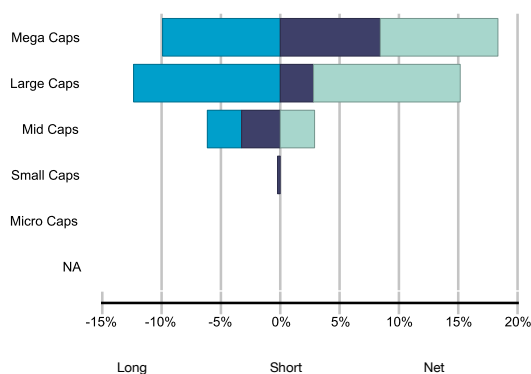
SECTOR ALLOCATION



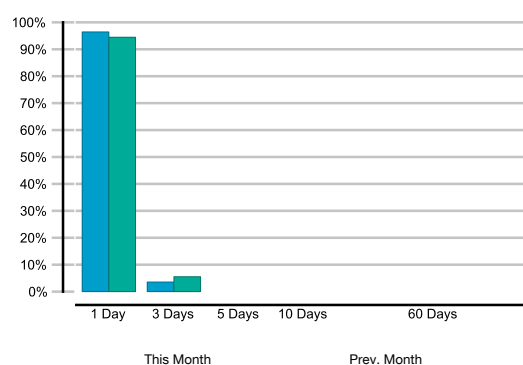
CURRENCY FX RISK



CAPITALISATION BREAKDOWN



EQUITY LIQUIDATION SCENARIO



The percentage of the equity asset that can be liquidated in the designated number of business days, assuming the sub investment manager is limited to selling no more than 25% of the average daily trading volume over last 60 business days. Average daily trading volume data is sourced from Bloomberg. For any security for which average trading volume was not available, it was assumed that the position could not be liquidated in one month.

MAIN RISKS

Risk of losses : The price of Shares can go up as well as down and investors may not realise their initial investment. The investments and the positions held by the Fund are subject to (i) fluctuations in the Strategy (ii) market fluctuations, (iii) reliability of counterparties and (iv) operational efficiency in the actual implementation of the investment policy adopted by the Fund in order to realise such investments or take such positions. Consequently, the investments of the Fund are subject to, inter alia, the risk of declines in the Strategy (which may be abrupt and severe), market risks, credit exposure risks and operational risks. At any time, the occurrence of any such risks is likely to generate a significant depreciation in the value of the Shares. Due to the risks embedded in the investment objective adopted by the Fund, the value of the Shares may decrease substantially and even fall to zero, at any time.

Counterparty risk: the Fund is exposed to the risk that any credit institution with which it has concluded an agreement or a transaction could become insolvent or otherwise default. If such an event occurs, you could lose a significant part of your investment.

Credit risk: the Fund is exposed to the risk that the credit quality of any direct or indirect debtor of the Fund (be it a state, a financial institution or a corporate) deteriorates or that any such entity defaults. This could cause the net asset value of the Fund to decline.

Operational risk and asset custody risk: in the event of an operational failure within the management company, or one of its representatives, investors could experience delays or other disruptions.

Liquidity risk: in certain circumstances, financial instruments held by the Fund or to which the value of the Fund is linked could suffer a temporary lack of liquidity. This could cause the Fund to lose value, and/or to temporarily suspend the publication of its net asset value and/or to refuse subscription and redemption requests.

Risk of using FDI: the Fund invests in financial derivative instruments in order to reach its investment objective. These instruments may include a range of risks which could lead to their adjustment or result in their early termination. This could lead to the loss of a part of your investment.

Capital at risk: the initial capital invested is not guaranteed. As a consequence, investor's capital is at risk and the amount originally invested may not be recovered.

CONTACT LYXOR | +33 (0)142133131 | lyxor-crm@lyxor.com | www.lyxor.com

THIS DOCUMENT IS INTENDED FOR INSTITUTIONAL CLIENTS

The information contained in this document is provided to you confidentially and for exclusive use, and in no way constitutes an offer to buy, investment advice, a solicitation to sell or the basis of an agreement or a commitment of any sort. All forecasts, valuations and statistical analyses included in this document are provided for information purposes only. These forecasts, valuations and analyses may be based on subjective estimates and assumptions and may have been obtained by applying one of a number of methods that may give rise to different results; accordingly, these forecasts, valuations and analyses must not be seen as factually accurate and should not be considered to be accurate predictions of future events. The accuracy, completeness and relevance of the information provided are not guaranteed: although this information has been prepared by reference to reputable sources that are considered to be reliable, it may be amended without notice. This information is necessarily partial, provided on the basis of market data observed at a particular moment, and subject to change. Lyxor Asset Management accepts no liability, whether direct or indirect, that may result from using any information contained in this document or from any decision taken on the basis of the information contained therein. This information must not be copied, reproduced, amended, translated or distributed without the prior written consent of Lyxor Asset Management. Data from rating agencies are provided to you only by virtue of the authorisations that have been granted by those rating agencies. You must notify us as soon as possible in the event that there is any change to these authorisations.

NOTICE

Notice to Investors in Asia-Pacific Region: This document is not directed at retail investors and is prepared for and intended to be distributed in the Asia-Pacific region solely to sophisticated and professional investors. You should therefore be appropriately qualified as a professional, accredited, wholesale, expert or institutional investor (however defined in your local jurisdiction). It is distributed by licensed affiliates of Amundi AM. You should be aware that local regulations may not allow this document to be distributed from your local Amundi AM licensed affiliate but may allow it to be distributed from an offshore branch or affiliate under certain circumstances. If in any doubt, you should always determine which licensed affiliate is responsible for distributing this document to you by contacting Amundi AM. You should also be aware that financial products or services referred to may not be sold, bought, or subscribed to if you do not qualify in your local jurisdiction. Always ensure that you contact and deal through appropriately licensed entities if you wish to purchase any such products or services.

No further disclosure, reproduction or reliance permitted: This document has been prepared solely for persons it has been distributed to directly by Amundi AM or any of its affiliates or delegates. Its contents may not be disclosed to, reproduced, or used or relied upon by, any other person, or used for any other purpose.

For Recipients where this document is distributed by Amundi Hong Kong Limited: This document is distributed to you by Amundi Hong Kong Limited ("Amundi HK") as an activity that is wholly incidental to its carrying out of a regulated activity for which it is already licensed. Details of Amundi HK's license can be provided upon request. Amundi HK has been appointed by Lyxor AM, LIAM, and Lyxor Funds Solutions S.A. (together "Lyxor") to promote the funds launched by Lyxor. Investors and prospective investors should note that a service fee may be paid by Lyxor to Amundi HK for its services.

For Recipients in Hong Kong: This document is issued solely to "professional investors" within the meaning of the Securities and Futures Ordinance (Cap. 571) of Hong Kong and any rules made under that Ordinance.

For Documents Distributed in China from Offshore (as a Result of a Reverse Enquiry): This document has been prepared and distributed by Amundi Hong Kong Limited as a result of a reverse enquiry by you. Amundi HK, a limited liability company incorporated under the laws of Hong Kong on 9 March 1973 and regulated by the SFC. The products or services that may be mentioned in this document may not be able to be provided in China. Any products or services mentioned in this document to be provided are subject to laws and regulations and regulator's requirements in China, as well as the formally executed legal documents (if any).

Notice to Korean Investors: This document is distributed by Amundi Hong Kong Limited outside Korea and intended for Korean financial institutions holding the dealing or brokerage business license under the Financial Investment and Capital Market Act of Korea and the Enforcement Decree thereof. For other types of clients, this is distributed upon their request only. Amundi Hong Kong Limited is regulated by the Securities & Futures Commission under Hong Kong laws. The product mentioned in this document may not be eligible or suitable for all types of investors. This document is not intended for private customers.

For Korean Investors Receiving this document from NH-Amundi Asset Management: This document is distributed by NH-Amundi Asset Management. NH-Amundi Asset Management is regulated by the Financial Services Commission and the Financial Supervisory Service under Korean laws. The product mentioned in this document may not be eligible or suitable for all types of investors. This document is not intended for private customers.

Notice for Documents Distributed in Taiwan: This document is to present to you as a result of reverse enquiry and may only be distributed to "professional institutional investors" within the meaning provided in the applicable regulations in Taiwan. The product(s) or service(s), if any, mentioned in this document, have not been registered with or approved by Taiwan competent authorities and are not regulated by Taiwan laws and regulations. The Fund has not been and will not be registered with the Financial Supervisory Commission (the "FSC") of Taiwan, the Republic of China ("Taiwan") pursuant to applicable securities laws and regulations and any sale of the interests in the Fund ("Interest") in Taiwan shall be in compliance with the local legal requirements and restrictions. There are restrictions on the offering, issue, distribution, transfer, sale or resale of the Interests in Taiwan, either through a public offering or private placement. The Interests cannot be sold, issued or publicly offered in Taiwan without prior approval from or registration with the FSC pursuant to applicable laws. No person or entity in Taiwan has been authorized to offer, sell, give advice regarding or otherwise intermediate the offering and sale of the Interests.

IMPORTANT INFORMATION FOR INVESTORS

Regarding the benchmark index mentioned in this document: Parties entering into transactions (such as a derivative or financing transaction) or investing in financial instruments that use a benchmark index are exposed to the risk that: (1) such benchmark index may be subject to methodological or other changes which could affect the value of the relevant transaction; or (2) (i) may become not compliant with applicable laws and regulations (such as the European Benchmark Regulation), (ii) may cease to be published, or (iii) the supervisor or administrator of any such benchmark may make a statement that the relevant benchmark is no longer representative, and as a consequence the relevant benchmark may be replaced by another benchmark which may have an adverse and material impact on the economics of the relevant transactions. You should conduct your own independent investigation and analysis of the potential consequences of any relevant risks such as those mentioned above, particularly in light of the ongoing industry initiatives related to the development of alternative reference rates and the update of the relevant market standard documentation.