

EQUITY

# AXA WF Framlington UK I EUR

## Key figures (in EUR)

<b>Total assets under management (in million - GBP)</b>	<b>337.25</b>	<b>Current NAV (I)</b>	<b>99.62</b>
Dividend (net Amount)	<b>1.84</b>	12 month NAV price High	128.76
Ex-Dividend Date	<b>30/12/2021</b>	12 month NAV price Low	98.91

## Performance evolution (in EUR)

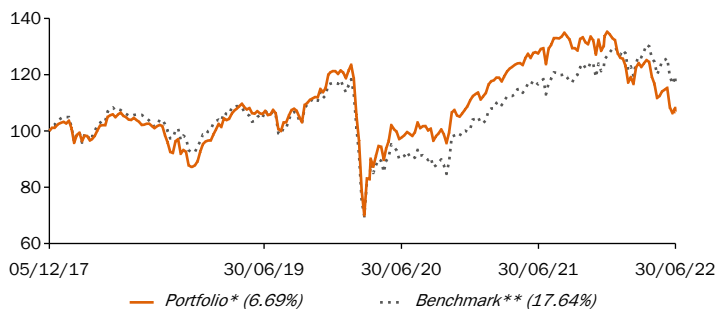
### Annualized performance

	1 Y.	3 Y.	5 Y.	Since launch
Portfolio*	-15.90%	0.09%	-	1.43%
Benchmark**	1.36%	3.73%	-	3.62%
Excess return	-17.27%	-3.64%	-	-2.19%

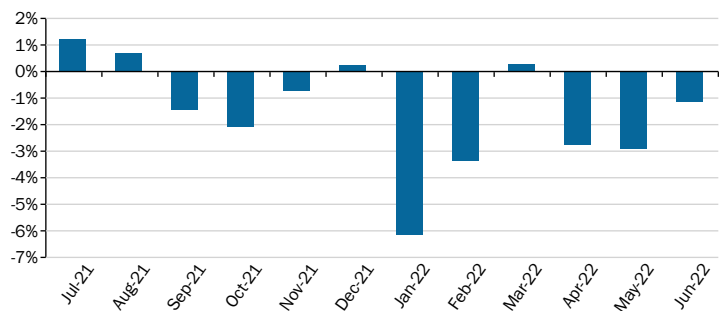
### Cumulative performance

	1 M.	3 M.	6 M.	YTD	Since launch
Portfolio*	-8.30%	-13.06%	-21.09%	-21.09%	6.69%
Benchmark**	-7.16%	-6.77%	-6.92%	-6.92%	17.64%
Excess return	-1.14%	-6.28%	-14.17%	-14.17%	-10.95%

### Performance evolution



### Monthly excess return



### Monthly performance

	Jan	Feb	Mar	Apr	May	Jun	Jul	Aug	Sep	Oct	Nov	Dec	Total
2018 Portfolio*	-0.08%	-3.35%	-1.87%	5.11%	2.80%	-0.39%	-0.81%	-0.59%	-1.21%	-7.29%	-1.14%	-5.06%	-13.54%
2018 Benchmark**	-0.64%	-4.27%	-0.87%	6.37%	2.79%	-0.98%	0.42%	-3.10%	1.21%	-4.78%	-1.72%	-4.83%	-10.47%
2019 Portfolio*	8.98%	5.50%	2.41%	5.10%	-3.07%	0.12%	-0.12%	-1.68%	3.71%	2.30%	3.24%	6.52%	37.60%
2019 Benchmark**	7.19%	4.23%	2.00%	2.93%	-5.69%	2.44%	0.38%	-3.03%	5.23%	1.18%	3.41%	3.94%	26.22%
2020 Portfolio*	-2.09%	-10.38%	-20.67%	11.55%	2.45%	0.35%	-0.05%	4.55%	-3.52%	-2.48%	8.68%	6.50%	-9.15%
2020 Benchmark**	-2.48%	-10.93%	-17.46%	6.92%	-0.19%	0.51%	-2.72%	3.39%	-3.27%	-3.16%	13.35%	3.97%	-14.63%
2021 Portfolio*	-0.89%	4.49%	4.12%	3.51%	2.60%	0.02%	2.42%	2.79%	-2.62%	1.58%	-3.74%	6.32%	22.07%
2021 Benchmark**	0.35%	3.93%	5.98%	2.18%	2.32%	0.24%	1.19%	2.09%	-1.17%	3.67%	-2.99%	6.07%	26.15%
2022 Portfolio*	-6.02%	-4.03%	0.62%	-1.88%	-3.37%	-8.30%	-	-	-	-	-	-	-21.09%
2022 Benchmark**	0.15%	-0.65%	0.34%	0.88%	-0.46%	-7.16%	-	-	-	-	-	-	-6.92%

The figures provided relate to previous months or years and past performance is not a reliable indicator as to future performance.

\* 1st NAV date: 05/12/2017

\*\* Benchmark : Please refer to the Benchmark section in the characteristics/disclaimers part of the document.

Source(s): AXA Investment Managers - FTSE as at 30/06/2022

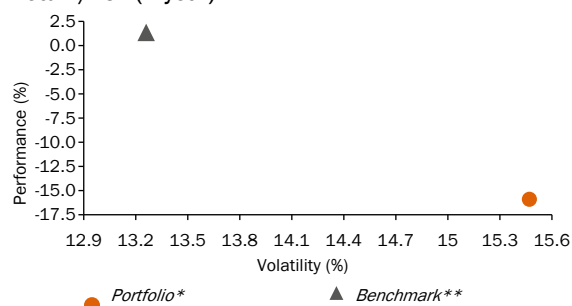
Editor: AXA Investment Managers Paris S.A.

## Risk analysis (please refer to glossary of terms on our website)

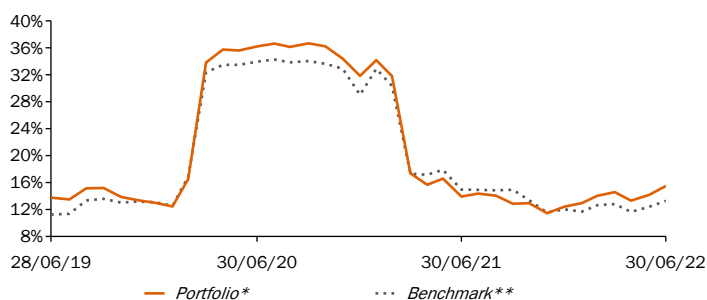
## Risk ratios

	1 Y.	3 Y.	5 Y.	Since launch
<b>Annualized volatility</b>				
Portfolio*	15.47%	20.12%	-	18.20%
Benchmark**	13.26%	18.06%	-	16.49%
<b>Sharpe ratio</b>				
Portfolio*	-0.94	0.07	-	0.14
Benchmark**	0.14	0.23	-	0.25
<b>Relative risk ('Tracking Error')</b>				
	6.13%	7.63%	-	7.02%
<b>Information ratio</b>				
	-2.71	-0.38	-	-0.20

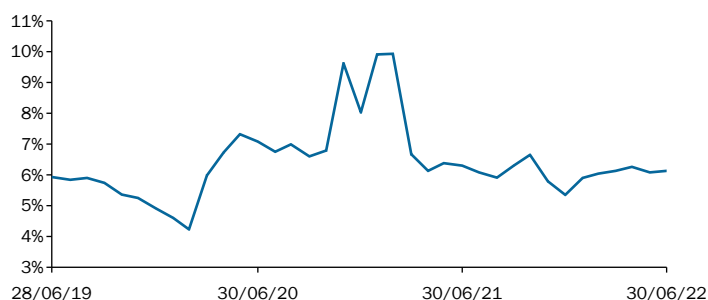
## Return/risk (1 year)



## Volatility evolution (annualized over 1 year)



## Tracking Error evolution (annualized over 1 year)



\* 1st NAV date: 05/12/2017

\*\* Benchmark : Please refer to the Benchmark section in the characteristics/disclaimers part of the document.

Source(s): AXA Investment Managers - FTSE as at 30/06/2022

## Objective and investment strategy

The Sub-Fund seeks to achieve long term capital growth measured in GBP by investing in large, medium and small capitalisation companies domiciled or listed in the United Kingdom.

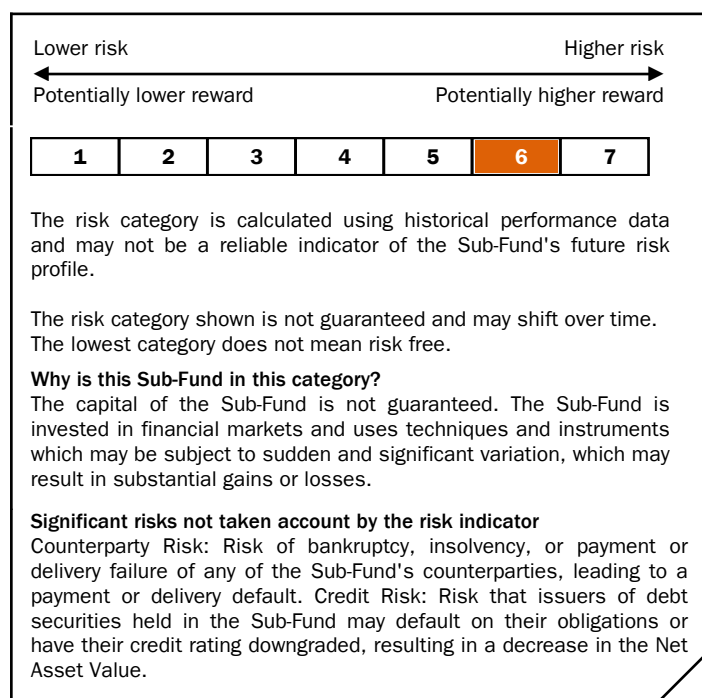
## Benchmark

Since: 02/03/2016

100% FTSE All Share Total Return Gross

## Risk characteristics

**Recommended Investment Time Horizon :** This Sub-Fund may not be suitable for investors who plan to withdraw their contribution within 5 years.



## General characteristics

Legal form	SICAV
Legal country	Luxembourg
Launch date	02/03/16
Fund currency	GBP
Shareclass currency	EUR
Valuation	Daily
Share type	Income
ISIN code	LU1373106605
Ongoing charges	0.77%
Financial management fee*	0.6%
Maximum management fees	0.6%
Performance fee	none

Management company	AXA Funds Management S.A.
(Sub) Financial delegation	AXA Investment Managers UK Limited
Delegation of account administration	State Street Bank International GmbH (Luxembourg Branch)
Custodian	State Street Bank International GmbH (Luxembourg Branch)

\*As disclosed in the most recent Annual Report, the ongoing charges calculation excludes performance fees, but includes management and applied services fees. The effective Applied Service Fee is accrued at each calculation of the Net Asset Value and included in the ongoing charges of each Share Class.

## Subscription / Redemption

The subscription, conversion or redemption orders must be received by the Registrar and Transfer Agent on any Valuation Day no later than 3 p.m. Luxembourg time. Orders will be processed at the Net Asset Value applicable to such Valuation Day. The investor's attention is drawn to the existence of potential additional processing time due to the possible involvement of intermediaries such as Financial Advisers or distributors. The Net Asset Value of this Sub-Fund is calculated on a daily basis.

Minimum initial investment: 5.000.000 GBP or the equivalent in the relevant currency of the relevant Share class.

Minimum subsequent investment: 1.000.000 GBP or the equivalent in the relevant currency of the relevant Share class.

## Disclaimers

Performance calculations are net of management or distribution fees. Performance are shown as annual performance (365 days). Performance calculations are based on the reinvestment dividend.

Risk Ratios are calculated from gross performances

Geographical breakdown - Investments will be classified to match that of the index or by their principle country of investment, this may be different to the legal country of incorporation. This breakdown excludes cash.

The tax treatment relating to the holding, acquisition or disposal of shares or units in the fund depend on each investor's tax status or treatment and may be subject to change. Any potential investor is strongly encouraged to seek advice from its own tax advisors.

Depending on the investment strategy used the information contained herein may be more detailed than the information disclosed in the prospectus. Any such information (i) does not constitute a representation or undertaking on the part of the investment manager; (ii) is subjective and (iii) may be modified at any time within the limits provided in the fund prospectus.

This document is for informational purposes only and does not constitute, on AXA Investment Managers Paris part, an offer to buy or sell or a solicitation or investment advice. Due to its simplification, this document is partial and the information can be subjective. AXA Investment Managers Paris may but shall not be obligated to update or otherwise revise this document without any prior notice. All information in this document is established on the accounting information or on market data basis. All accounting information is un-audited. AXA IM and/or its affiliates may receive or pay fees or rebates in relation to the Mutual Fund or investment vehicle. AXA Investment Managers Paris disclaims any and all liability relating to a decision based on or for reliance on this document. The most recent prospectus is available to all investors and must be read prior

subscription and the decision whether to invest or not must be based on the information contained in the prospectus.

AXA Investment Managers Paris, a company incorporated under the laws of France, having its registered office located at Tour Majunga, 6, Place de la Pyramide 92908 Paris - La Défense cedex – France, registered with the Nanterre Trade and Companies Register under number 353 534 506, a Portfolio Management Company, holder of COB approval no. GP 92-08, issued on 7 April 1992.

#### FTSE

FTSE International Limited («FTSE») © FTSE. [2022] FTSE® is a trade mark of London Stock Exchange Plc and The Financial Times Limited and is used by FTSE under licence. All rights in the FTSE Indices vest in FTSE and/or its licensors. Neither FTSE nor its licensors accept any liability for any errors or omissions in the FTSE Indices or underlying data. No further distribution of FTSE Data is permitted without FTSE's express written consent.

### For your information

Regulatory documents are available on demand

AXA Investment Managers Paris  
a company incorporated under the laws of France, having its registered office located at  
Tour Majunga  
6, Place de la Pyramide  
92908 Paris - La Défense cedex – France  
a Portfolio Management Company, holder of AMF approval no. GP 92-08, issued on 7 April 1992,  
A french corporation (Public Limited Company) with capital of euros 1,384,380  
RCS Nanterre 353 534 506