



THEAM QUANT – EQUITY WORLD GLOBAL GOALS FUND

theam QUANT
FUNDS

SRI

MARKETING COMMUNICATION | FOR PROFESSIONAL CLIENTS ONLY | JUNE 2020

Objective

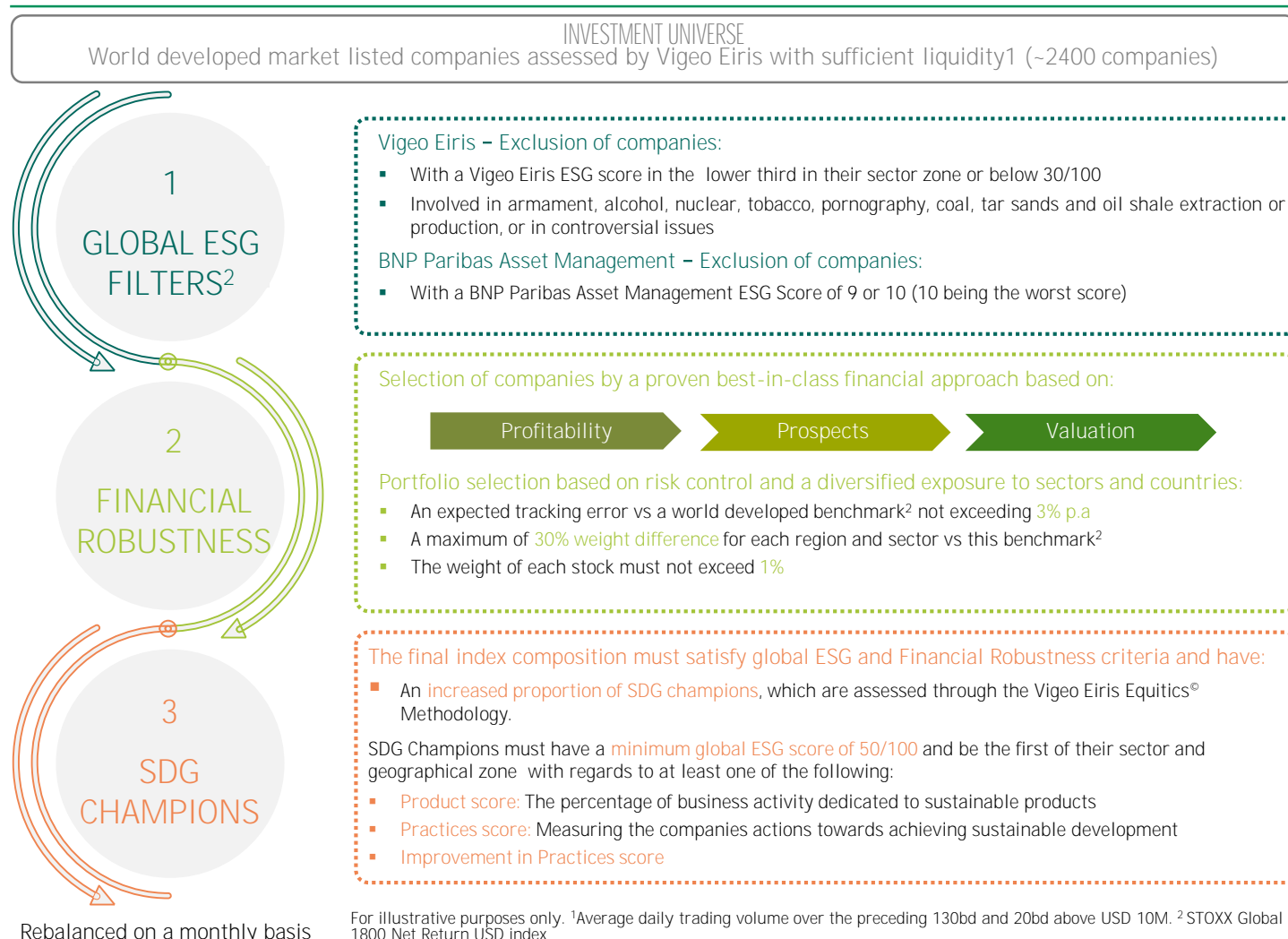
- The Fund's objective is to provide capital growth over the medium term by investing in a dynamic basket of equities listed on developed markets stock exchanges
- Equities are selected in order to achieve three goals: A positive governance outlook and financial outlook while controlling the tracking error versus the benchmark¹, and overweighting companies with high sustainable standards.
- In order to achieve the fund's investment objective, a quantitative investment strategy is implemented replicating the BNP Paribas Equity World Global Goals NTR Index

¹ Stoxx Global 1800 Net Return USD Index

Key points: Three Global Goals

- Positive governance outlook: Exclusion of companies with low ESG standards and involved in controversial activities
- Positive financial outlook: A fundamental stock picking approach to ensure financial stability, subject to a defined tracking error vs the benchmark and diversification constraints
- Overweighting companies with high sustainable standards (SDG Champions): Assessed by Vigeo Eiris on products, practices and progression towards the achievement of the SDGs

Investment Process

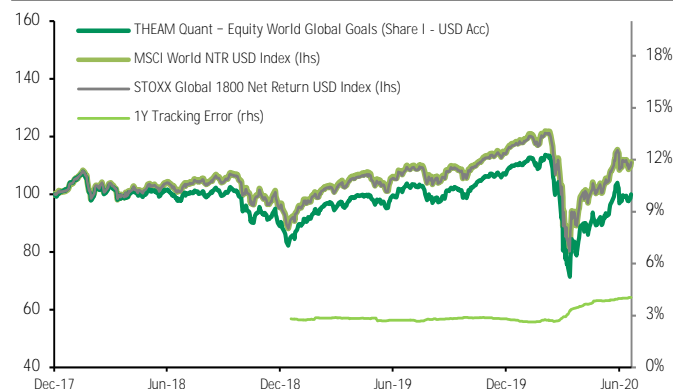


For illustrative purposes only. ¹ Average daily trading volume over the preceding 130bd and 20bd above USD 10M. ² STOXX Global 1800 Net Return USD Index

THEAM Quant – Equity World Global Goals Fund

SRI

Performance Analysis

Historical Performance (net of fees, Share I - USD)¹

Key figures

>50% Of the eligible universe excluded by ESG filters

+25% Alpha generated by the financial filters with respect to the tracking error²

x5 Weighting of SDG champions vs the benchmark

¹Source Bloomberg, BNP Paribas as of 30 June 2020 ²Active return p.a. vs the strategy without financial filters over 14 years/ tracking error as of 31 January 2018

Simulated Performance and Risk Statistics

				1M	3M	1Y	3Y p. a.	5Y p. a.	Global p. a.	Volatility p. a.		Max. Drawdown	Tracking Error ¹			
THEAM Quant - Equity World Global Goals				Return	2.93%	20.51%	-2.03%		0.00%	Risk	20.81%	-37.06%	2.42%			
MSCI World NTR USD Index					2.65%	19.36%	2.84%		4.20%		20.08%	-34.03%				
STOXX Global 1800 Net Return USD index					2.70%	19.40%	3.19%		4.17%		19.66%	-33.82%				
				Jan.	Feb.	Mar.	Apr.	May	Jun.	Jul.	Aug.	Sept.	Oct.	Nov.	Dec.	Year
2020	Fund	-1.39%	-8.24%	-16.84%	10.84%	5.62%	2.93%									-9.32%
	NNDUWI	-0.61%	-8.45%	-13.23%	10.92%	4.83%	2.65%									-5.77%
2019	Fund	8.21%	4.01%	0.34%	3.16%	-4.72%	7.27%	-0.10%	-2.54%	2.08%	3.32%	2.47%	3.04%	29.09%		
	NNDUWI	7.78%	3.01%	1.31%	3.55%	-5.77%	6.59%	0.50%	-2.05%	2.13%	2.54%	2.79%	3.00%	27.67%		
2018	Fund	4.52%	-4.19%	-1.79%	0.42%	-0.28%	-1.11%	2.54%	0.71%	-0.22%	-8.40%	1.31%	-8.34%	-14.63%		
	NNDUWI	5.28%	-4.14%	-2.18%	1.15%	0.63%	-0.05%	3.12%	1.24%	0.56%	-7.34%	1.14%	-7.60%	-8.71%		
2017	Fund	2.04%	2.92%	1.93%	1.62%	2.37%	0.79%	1.93%	-0.30%	3.07%	1.47%	2.40%	1.46%	23.93%		
	NNDUWI	2.41%	2.77%	1.07%	1.48%	2.12%	0.38%	2.39%	0.14%	2.24%	1.89%	2.17%	1.35%	22.40%		

Source: Bloomberg, BNP Paribas as of 30 June 2020. ¹Tracking error versus the MSCI World NTR USD index. Fund performance is expressed net of management fees and in USD. Comparative index: MSCI World NTR Index USD, Bloomberg code: <NNDUWI Index>. Comparative index for illustrative purposes only. This index does not represent an official benchmark of the fund. Past performance or achievement is not indicative of current or future performance. This is for general information only and should not be used as a basis for making any specific investment, business or commercial decisions. Any economic and market trend, prediction, projection or forecast is not necessarily indicative of the future or likely performance of the funds.

Fund characteristics

THEAM Quant – Equity World Global Goals			
Management Company	BNP Paribas Asset Management France		
Benchmark	STOXX Global 1800 Net Return Index USD		
Type	Sub-fund of the Luxembourg SICAV THEAM QUANT, UCITS V compliant		
Capital protection	No		
Investment horizon	The higher the risk, the longer the recommended investment horizon.		
SRRI Ranking (scale from 1 to 7)*	5		
Share	Share C (USD) Acc	Share C (USD) Dis	Share I (USD) Acc
Launch date	11 December 2017	11 December 2017	11 December 2017
Bloomberg code	TQGGCAU LX	TQGGCDU LX	TQGGIAU LX
ISIN code	LU1685643683	LU1685643766	LU1685644657
Ongoing charges	1.70% (as of Mar. 19)		0.76% (as of Mar. 19)
Subscription / Exit fees	3.00% / None		None
Minimum subscription	None		USD 100 000
Passporting	Belgium, Italy		

The value of investments and the income they generate may go down as well as up and it is possible that investors will not recover their initial outlay, the fund described being in risk of capital loss. *The synthetic risk indicator is determined on a scale from 1 to 7 (7 being the highest risk level). It is subject to a periodical computation and can consequently change over time. We invite you to consult regularly the KIID.

Funds' main common risks

- The following list of risk factors associated with the funds is not exhaustive. The risk factors that should be considered in connection with any investment include (but are not limited to) the following:
- An investment in the funds may involve a significant degree of risk. Investment in the funds is only suitable for those persons who are able to bear the economic risk of the investment, understand the degree of risk involved, believe that the investment is suitable based upon their investment objectives and financial needs, and have specific needs for liquidity of investment. There can be no assurance that the funds' objectives will be achieved or that there will be any return of capital.

Economic conditions

- The success of any investment activity is affected by general economic conditions, which may affect the level and volatility of interest rates and the extent and timing of investor participation in the equity markets. Unexpected volatility or illiquidity in the markets in which the funds hold positions could impair the funds' ability to carry out their business or cause them to incur losses. None of these conditions is within the control of the funds or its management company and/or investment manager and no assurances can be given that the funds or its management company and/or investment manager will anticipate these developments.

The funds will possess inherent risks

- These include, among other things, credit, liquidity, volatility, currency and interest rate risk, the financial condition of the underlying obligors, general economic conditions, market price volatility, the condition of certain financial markets, political events and developments or trends in any particular industry.

Currency exchange risk

- The value of an investment may be affected by fluctuations in the currency of the country in which the investment was made, or exchange control regulations.

Interest rate risk

- The value of an investment may be affected by interest rate fluctuations. Interest rates may be influenced by several elements or events, such as monetary policy, the discount rate, inflation, etc.

Derivatives risk

- The use of derivatives by the funds includes various risks. Those risks are (without limitation), the lack of secondary market liquidity under circumstances, valuations risks, the lack of standardization and regulation, the risk of leverage, the risk of counterparty.

Liquidity risk

- There is a risk that investments made in funds may become illiquid due to an over-restricted market (often reflected by a very broad bid-ask spread or by substantial price movements), or if their "rating" declines or their economic situation deteriorates.

Credit risk

- This is the risk that may derive from the rating downgrade of a bond issuer to which the funds are exposed, which may therefore cause the value of the investments to go down. Funds investing in high-yield bonds present a higher than average risk due to the greater fluctuation of their currency or the quality of the issuer.

Risk linked to equity markets

- The risks associated with investments in equities (and similar instruments) include significant fluctuations in prices, negative information about the issuer or market and the subordination of a company's equities to its bonds. The value of investments and the income they generate may go down as well as up and it is possible that investors will not recover their initial outlay.

Counterparty risk

- This risk relates to the quality of the counterparty with whom the funds do business or enter into various transactions. This risk reflects the counterparty's ability to honor its commitments (payment, delivery, repayment, etc.)

Disclaimer

Legal Notice: This document is CONFIDENTIAL AND FOR DISCUSSION PURPOSES ONLY; it constitutes a marketing communication and has been prepared by a Sales and Marketing function within BNP Paribas and/or its subsidiaries or affiliates (collectively “we” or “BNP Paribas”). As a confidential document it is submitted to selected recipients only and it may not be made available (in whole or in part) to any other person without BNP Paribas’ written consent.

This document is not a recommendation to engage in any action, does not constitute or form any part of any offer to sell or issue and is not a solicitation of any offer to purchase any financial instrument, nor shall it or any part of it nor the fact of its distribution form the basis of, or be relied on in connection with, any contract or investment decision. To the extent that any transaction is subsequently entered into between the recipient and BNP Paribas, such transaction will be entered into upon such terms as may be agreed by the parties in the relevant documentation.

The information contained in this document has been obtained from sources believed to be reliable, but there is no guarantee of the accuracy, completeness or suitability for any particular purpose of such information or that such information has been independently verified by BNP Paribas or by any person. None of BNP Paribas, its members, directors, officers, agents or employees accepts any responsibility or liability whatsoever or makes any representation or warranty, express or implied, as to the accuracy or completeness of the information, or any opinions based thereon, contained in this document and it should not be used in place of professional advice. Additional information may be provided on request, at our discretion. Any scenarios, assumptions, historical or simulated performances, indicative prices or examples of potential transactions or returns are included for illustrative purposes only. Past performance is not indicative of future results. Investors may get back less than they invested. BNP Paribas gives no assurance that any favourable scenarios described are likely to happen, that it is possible to trade on the terms described herein or that any potential returns illustrated can be achieved. This document is current as at the date of its production and BNP Paribas is under no obligation to update or keep current the information herein. In providing this document, BNP Paribas offers no investment, financial, legal, tax or any other type of advice to, and has no fiduciary duty towards, recipients. Certain strategies and/or potential transactions discussed in this document may involve the use of derivatives which may be complex in nature and may give rise to substantial risks, including the risk of total or partial loss of any investment or losses without limitation and which should only be undertaken by those with the requisite knowledge and experience. BNP Paribas makes no representation and gives no warranty as to the results to be obtained from any investment, strategy or transaction, or as to whether any strategy, security or transaction described herein may be suitable for recipients’ financial needs, circumstances or requirements. Recipients must make their own assessment of strategies, securities and/or potential transactions detailed herein, using such professional advisors as they deem appropriate. BNP Paribas accepts no liability for any direct or consequential losses arising from any action taken in connection with or reliance on the information contained in this document even where advised of the possibility of such losses.

As an investment bank with a wide range of activities BNP Paribas may face conflicts of interest and you should be aware that BNP Paribas and/or any of its affiliates may be long or short, for their own account or as agent, in investments, transactions or strategies referred to in this document or related products before the material is published to clients and that it may engage in transactions in a manner inconsistent with the views expressed in this document, either for their own account or for the account of their clients. Additionally, BNP Paribas may have acted as an investment banker or may have provided significant advice or investment services to companies or in relation to investments mentioned in this document. The information in this document is not intended for distribution to, or use by, any person or entity in any jurisdiction where (a) the distribution or use of such information would be contrary to law or regulations, or (b) BNP Paribas or a BNP Paribas affiliate would become subject to new or additional legal or regulatory requirements. Persons in possession of this document should inform themselves about possible legal restrictions and observe them accordingly.

This document is intended for, and is directed at, (a) Professional Clients and Eligible Counterparties as defined by the European Union Markets in Financial Instruments Directive (“MiFID”), and (b) where relevant, persons who have professional experience in matters relating to investments falling within Article 19(5) of the Financial Services and Markets Act 2000 (Financial Promotion) Order 2005, and at other persons to whom it may lawfully be communicated (together “Relevant Persons”). Any investment or investment activity to which this document relates is available only to and will be engaged in only with Relevant Persons. Any person who is not a Relevant Person should not act or rely on this document or its content.

This document is being communicated by BNP Paribas, a Limited Liability company incorporated in France. Registered Office: 16 boulevard des Italiens, 75009 Paris, France. 662 042 449 RCS Paris. BNP Paribas is lead supervised by the European Central Bank (ECB) and the French Autorité de Contrôle Prudentiel et de Résolution (ACPR).. © BNP Paribas. All rights reserved.

For funds authorized for marketing in Switzerland or from Switzerland, prospectuses, key investor information documents, articles of association, annual or semi-annual reports can be obtained free of charge from the representative agent in Switzerland, BNP Paribas (Suisse) SA, 2, place de Hollande, CH-1204 Genève; Payment Agency services are provided by BNP Paribas Securities Services, Paris, Zurich branch, 16, Selnaustrasse, 8002 Zurich, Switzerland.

All information referred to in the present document is available <https://theamquant.bnpparibas-am.com/>.