

RobecoSAM Climate Global Bonds DH EUR

RobecoSAM Climate Global Bonds is an actively managed fund that invests in bonds globally. The selection of these bonds is based on fundamental analysis. The fund aims to reduce the carbon footprint of the portfolio and thereby contribute towards the goals of the Paris agreement to keep the maximum global temperature rise well-below 2° C. The fund invests in worldwide bonds and other marketable debt securities and instruments (which may include short dated fixed or floating rate securities) issued or guaranteed by OECD member states and by companies based in OECD countries. The fund's objective is also to provide long term capital growth.



Bob Stoutjesdijk, Michiel de Bruin, Stephan van IJendoorn
Fund manager since 09-12-2020

Performance

	Fund	Index
1 m	-1.86%	-0.91%
3 m	1.06%	1.84%
Ytd	-2.40%	-1.25%
1 Year	1.31%	4.09%
2 Years	-6.66%	-3.66%
3 Years	-5.47%	-3.49%
Since 12-2020	-5.87%	-3.85%

Annualized (for periods longer than one year)
Note: due to a difference in measurement period between the fund and the index, performance differences may arise. For further info, see last page.

Calendar year performance

	Fund	Index
2023	2.69%	5.46%
2022	-15.58%	-13.63%
2021	-2.72%	-2.29%
2021-2023	-5.52%	-3.81%

Annualized (years)

Index

Solactive Paris Aware Global Aggregate Index (hedged into EUR)

General facts

Morningstar	★★★
Type of fund	Bonds
Currency	EUR
Total size of fund	EUR 40,332,012
Size of share class	EUR 1,600,491
Outstanding shares	19,454
1st quotation date	09-12-2020
Close financial year	31-12
Ongoing charges	0.91%
Daily tradable	Yes
Dividend paid	No
Ex-ante tracking error limit	8.00%
Management company	Robeco Institutional Asset Management B.V.

Sustainability profile

- Exclusions+
- ESG Integration
- ESG Target

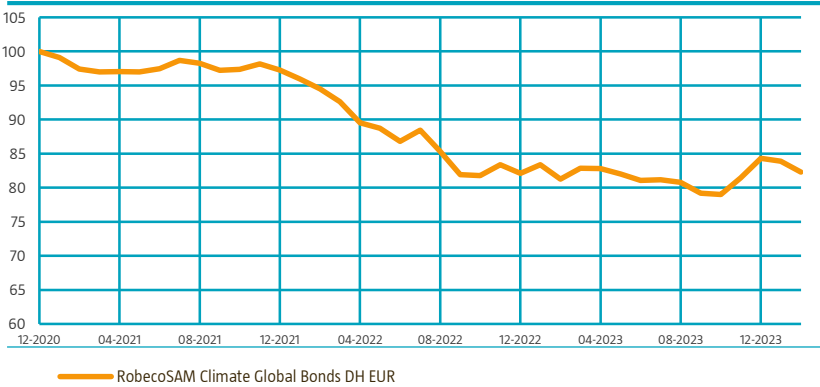
Footprint target

Better than index

For more information on exclusions see <https://www.robeco.com/exclusions/>

Performance

Indexed value (until 29-02-2024) - Source: Robeco



Performance

Based on transaction prices, the fund's return was -1.86%.

The fund posted a negative absolute return in February as global government bond yields increased. The fund's steeper positions in the United States, Canada, Sweden and New Zealand detracted from performance, while the contribution from duration was also negative, coming from the overweights in duration in Europe, the US and the UK. Equally, cross-market spread positions in New Zealand versus Australia also added to performance.

Market development

Government bonds posted negative returns in February, with German Bunds down 2.2%. In the US 10-year yields were up 34 bps on the month, while German Bund yields rose 24 bps. For euro periphery bonds, some of the losses were cushioned by spread tightening. Italian BTPs saw their 10-year yield rise 11 bps, as spreads versus Bunds were down 13 bps to 142 bps. The broad-based sell-off was a response to stronger-than-expected data. In the US, January non-farm payrolls kicked off the negative bond market sentiment by increasing as much as 353k, the highest number since January 2023. High core US CPI numbers (0.4%) added to the sentiment, as did comments from Fed officials suggesting the Fed can be patient in cutting rates. These comments were echoed by ECB officials, which resulted in the market fully pricing out any chance of a March rate cut for both the Fed and the ECB.

Expectation of fund manager

The market has priced out any chance of a Fed or ECB rate cut at their March meetings, while their number of expected 25 bps cuts for 2024 as a whole has been reduced to 3 to 4. The re-pricing was data driven, which suggests that some of the move higher in yields is justified by fundamentals. Still, we remain of the opinion that most major central banks will start cutting rates this year. History suggests that any such policy change should result in lower front-end yields and steeper curves. We remain cautious on Italian government bonds due to expected weak growth, worsening debt dynamics and large supply needs in combination with even more (passive) QT in the second half of the year. Spreads have continued to tighten and in our view are not a proper reflection of (slowly) worsening fundamentals.

Fund price

29-02-24	EUR	82.27
High Ytd (01-02-24)	EUR	84.13
Low Ytd (27-02-24)	EUR	81.99

Fees

Management fee	0.70%
Performance fee	None
Service fee	0.16%

Legal status

Investment company with variable capital incorporated under Luxembourg law (SICAV)

Issue structure	Open-end
UCITS V	Yes
Share class	DH EUR
This fund is a subfund of Robeco Capital Growth Funds, SICAV.	

Registered in

France, Italy, Liechtenstein, Luxembourg, Spain, Switzerland

Currency policy

All currency risks are hedged.

Risk management

Risk management is fully embedded in the investment process so as to ensure that the fund's positions remain within set limits at all times.

Dividend policy

The fund does not distribute a dividend.

Fund codes

ISIN	LU2258388284
Bloomberg	ROCBDHE LX
Valoren	58898199

Statistics

	3 Years
Tracking error ex-post (%)	1.07
Information ratio	-1.02
Sharpe ratio	-0.96
Alpha (%)	-0.97
Beta	1.03
Standard deviation	6.06
Max. monthly gain (%)	3.70
Max. monthly loss (%)	-3.94

Above mentioned ratios are based on gross of fees returns

Hit ratio

	3 Years
Months outperformance	14
Hit ratio (%)	38.9
Months Bull market	13
Months outperformance Bull	5
Hit ratio Bull (%)	38.5
Months Bear market	23
Months Outperformance Bear	9
Hit ratio Bear (%)	39.1

Above mentioned ratios are based on gross of fees returns.

Characteristics

	Fund	Index
Rating	A1/A2	A1/A2
Option Adjusted Modified Duration (years)	6.4	6.4
Maturity (years)	7.1	8.6
Yield to Worst (% , Hedged)	3.6	3.5
Green Bonds (% , Weighted)	8.5	2.7

Changes

RobecoSAM Climate Global Bonds: With effect from 10 March 2021, the benchmark has been changed from Bloomberg Barclays Global Aggregate Index to Solactive Paris Aware Global Aggregate Index.

Sector allocation

At month-end, the fund held overweight positions in Sweden, France, Austria, Brazil, Thailand, Mexico and the Netherlands versus underweights in the United States, China and Japan. The overall beta of the portfolio is equal to 1.4, while the credit beta is 1.0 (only corporate and EMD bonds). Within the corporate allocation, we have a clear preference for euro swap spreads, supranational bonds and covered bonds over corporate bonds. Given the still rich valuations in the different credit spread sectors and further potential spread widening risk, the fund is still underweight in some IG hard and EMD beta, while it is overweight in swap spreads via SSAs.

Sector allocation		Deviation index	
Treasuries	45.2%	-18.6%	
Industrials	13.7%	-0.7%	
Agencies	12.5%	11.6%	
Financials	9.9%	-1.4%	
Covered	6.5%	6.4%	
Sovereign	4.7%	0.9%	
Utilities	1.9%	0.4%	
Supranational	1.5%	-2.5%	
Local Authorities	1.0%	0.9%	
Cash and other instruments	3.0%	3.0%	

Currency allocation

The fund was overweight in the yen versus underweight in the USD, but closed the position in the last week of the month and replaced it with a bigger underweight in JGBs. We consider the yen a strong value case given its long-term valuation play, our view that the Fed has completed its final hike and is signaling rate cuts on the near horizon and given that the BoJ has finally started to acknowledge that its policy mix needs to change from very easy to very tight. Indeed Japan is facing higher levels of inflation and wage growth, while economic growth remains relatively strong in the services sector. Hence we are expecting some important steps from the BoJ such as further tweaks to the YCC policy and raising the policy rate out of negative territory. For now, the portfolio has very moderate FX risk.

Currency allocation		Deviation index	
Euro	100.6%	0.6%	
U.S. Dollar	-0.5%	-0.5%	
Pound Sterling	-0.4%	-0.4%	
Mexico New Peso	0.3%	0.3%	
Chinese Renminbi (Yuan)	0.2%	0.2%	
Peruvian New Sol	-0.2%	-0.2%	
Colombian Peso	-0.1%	-0.1%	
Swiss Franc	0.1%	0.1%	
New Zealand Dollar	-0.1%	-0.1%	
Swedish Kroner	-0.1%	-0.1%	
Indonesian Rupiah	0.1%	0.1%	
Singapore Dollar	0.1%	0.1%	
Other	-0.1%	-0.1%	

Duration allocation

The duration of the fund is close to equal to that of the index level. Most notable is the underweight in Japan, while we have maintained our overweight duration positions in the US and Europe and have added to duration in Canada and emerging local countries like Brazil and Mexico. In the portfolio overall, we retain our preference for UK Gilts and US Treasuries over Japan and Euro government bonds. Over the past few quarters, we have been building steeper positions in the US, New Zealand, Canada and Sweden, as we expect steepening pressure to build as recession risks rise.

Duration allocation		Deviation index	
Euro	2.7	0.2	
U.S. Dollar	1.7	-0.1	
Pound Sterling	0.8	-0.1	
Japanese Yen	-0.4	-0.8	
Mexico New Peso	0.3	0.2	
New Zealand Dollar	0.3	0.3	
Danish Kroner	0.2	0.2	
Indonesian Rupiah	0.2	0.1	
Korean Won	0.2	0.2	
Brasilian Real	0.2	0.2	
Thailand Baht	0.1	0.0	
Indian Rupee	-0.1	-0.1	
Other	0.0	-0.5	

Rating allocation

The fund has roughly 46% invested in AAA/AA bonds, mainly comprising government-related, covered bonds and Dutch and German government bonds. The average rating of the fund is in line with that of the index: A1/A2. The fund kept its conservative stance in corporate and emerging credit markets, targeting a credit beta of one. Furthermore, even though corporate spreads tightened in the past few months, we think risks are tilted to wider spreads, as economic fundamentals deteriorate, while central banks keep tightening policy. Overall exposure to HY remains low at just 4.3%.

Rating allocation		Deviation index	
AAA	23.6%	14.9%	
AA	18.8%	-12.3%	
A	13.6%	-14.3%	
BAA	36.7%	4.9%	
BA	4.3%	4.0%	
NR		-0.1%	
Cash and other instruments	3.0%	3.0%	

ESG Important information

The sustainability information in this factsheet can help investors integrate sustainability considerations in their process. This information is for informational purposes only. The reported sustainability information may not at all be used in relation to binding elements for this fund. A decision to invest should take into account all characteristics or objectives of the fund as described in the prospectus. The prospectus is available on request and free of charge on the Robeco website.

Sustainability

Sustainability is incorporated in the investment process via exclusions, ESG integration, a minimum allocation to ESG-labeled bonds as well as a carbon footprint target for both the government bond component and the credits component. For government bonds, the fund complies with Robeco's exclusion policy for countries. For credits, the fund does not invest in companies that are in breach of international norms and applies the activity-based exclusions of Article 12 of the EU regulation on Climate Transition Benchmarks, EU Paris-aligned Benchmarks and sustainability-related disclosures for benchmarks through exclusions as per Robeco's exclusion policy. ESG factors, including climate change, are integrated in the bottom-up security analysis to assess the decarbonization potential and the impact of financially material ESG risks on the issuer's fundamental quality. Furthermore, the fund invests at least 2.5% in green, social, sustainable, and/or sustainability-linked bonds. In the portfolio construction the fund targets carbon footprints at least equal to or better than the government bond component and the credit component of the Solactive Paris Aware Global Aggregate Index, respectively. This is to ensure the fund is aligned with the desired decarbonization trajectory of an average 7% year on year.

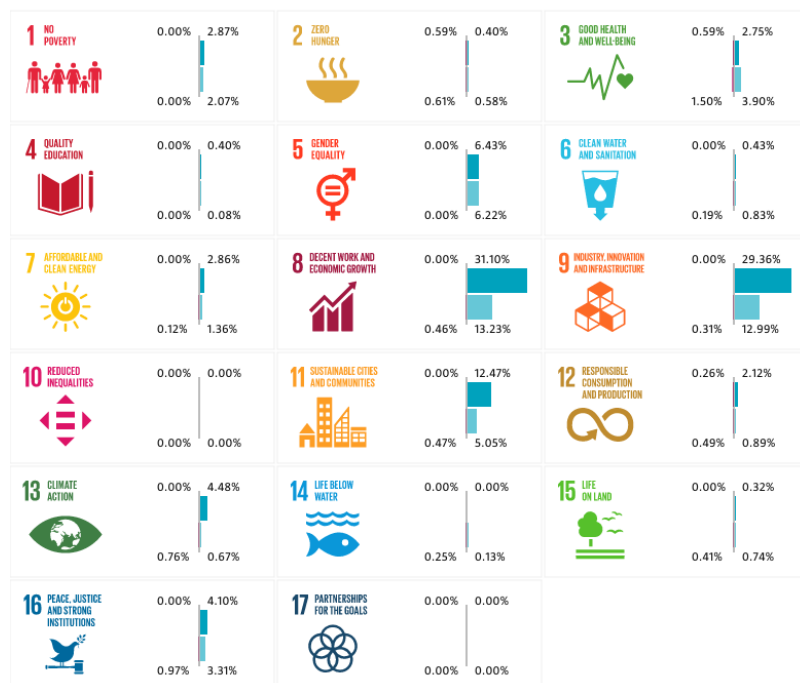
The following sections display the ESG-metrics for this fund along with short descriptions. For more information please visit the sustainability-related disclosures.

The index used for all sustainability visuals is based on Solactive Paris Aware Global Aggregate Index (hedged into EUR).

SDG Impact Alignment

This distribution across SDG scores shows the portfolio weight allocated to companies with a positive, negative and neutral impact alignment with the Sustainable Development Goals (SDG) based on Robeco's SDG Framework. The framework utilizes a three-step approach to assess a company's impact alignment with the relevant SDGs and assign a total SDG score. The score ranges from positive to negative impact alignment with levels from high, medium or low impact alignment. This results in a 7-step scale from -3 to +3. For comparison, index figures are provided alongside that of the portfolio. Only holdings mapped as corporates are included in the figures.

Use of the United Nations Sustainable Development Goals (SDG) logos, including the colour wheel, and icons shall only serve explanatory and illustrative purposes and may not be interpreted as an endorsement by the United Nations of this entity, or the product(s) or service(s) mentioned in this document. The opinions or interpretations shown in this document hence do not reflect the opinion or interpretations of the United Nations.

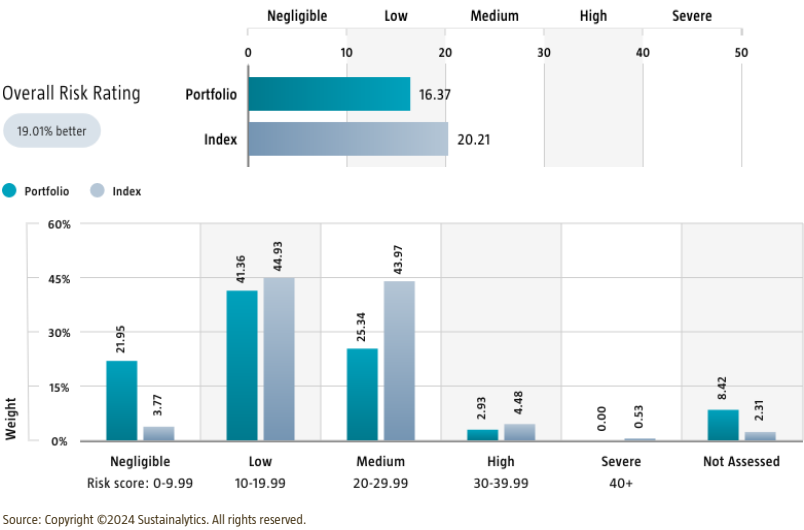


Source: Robeco. Data derived from internal processes.

Sustainalytics ESG Risk Rating

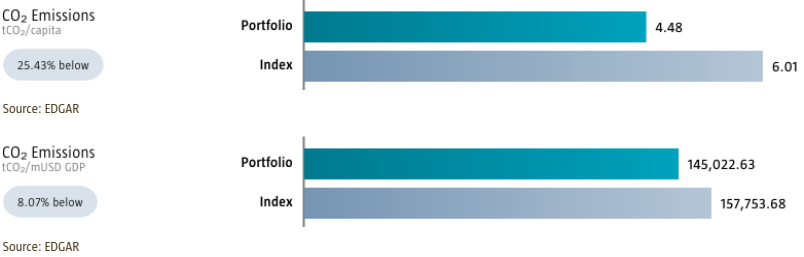
The Portfolio Sustainalytics ESG Risk Rating chart displays the portfolio's ESG Risk Rating. This is calculated by multiplying each portfolio component's Sustainalytics ESG Risk Rating by its respective portfolio weight. The Distribution across Sustainalytics ESG Risk levels chart shows the portfolio allocations broken into Sustainalytics' five ESG risk levels: negligible (0-10), low (10-20), medium (20-30), high (30-40) and severe (40+), providing an overview of portfolio exposure to the different ESG risk levels. Index scores are provided alongside the portfolio scores, highlighting the portfolio's ESG risk level compared to the index.

Only holdings mapped as corporates are included in the figures.



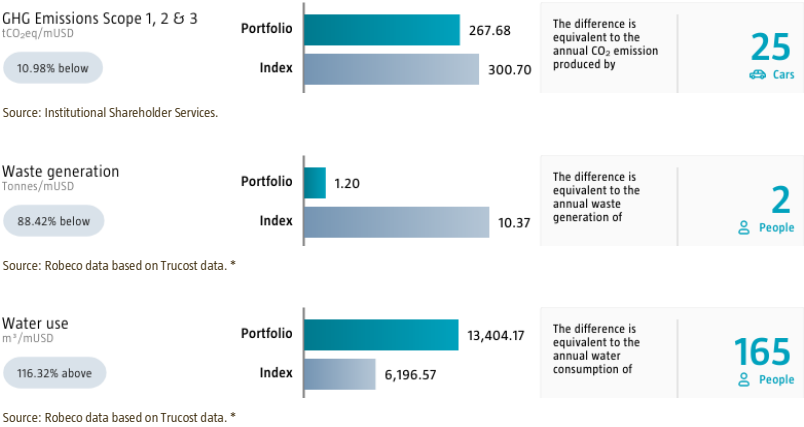
Environmental Intensity - Government bond allocation

Environmental intensity expresses a portfolio's aggregate environmental efficiency. The portfolio's aggregate carbon intensity is based on the related country emissions. We divide each country's carbon emissions, measured in tCO₂, by the population size or gross domestic product to obtain the country's carbon intensity. The portfolio's aggregate intensity figures are calculated as a weighted average by multiplying each assessed portfolio component's intensity figure with its respective position weight. Index intensities are provided alongside the portfolio intensities, highlighting the portfolio's relative carbon intensity. Only holdings mapped as sovereign bonds are included in the figures.



Environmental Footprint - Credit allocation

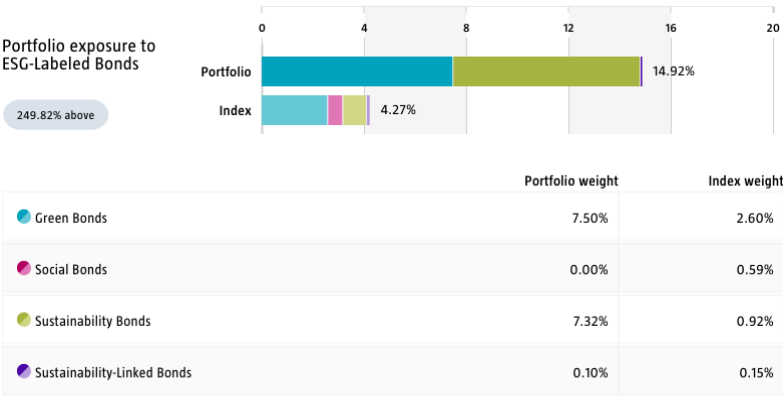
Environmental footprint expresses the total resource consumption of the portfolio per mUSD invested. Each assessed company's footprint is calculated by normalizing resources consumed by the company's enterprise value including cash (EVIC). We aggregate these figures to portfolio level using a weighted average, multiplying each assessed portfolio constituent's footprint by its respective position weight. For comparison, index footprints are shown besides that of the portfolio. The equivalent factors that are used for comparison between the portfolio and index represent European averages and are based on third-party sources combined with own estimates. As such, the figures presented are intended for illustrative purposes and are purely an indication. Only holdings mapped as corporates are included in the figures.



* Source: S&P Trucost Limited © Trucost 2024. All rights in the Trucost data and reports vest in Trucost and/or its licensors. Neither Trucost, nor its affiliates, nor its licensors accept any liability for any errors, omissions, or interruptions in the Trucost data and/or reports. No further distribution of the Data and/or Reports is permitted without Trucost's express written consent.

ESG Labeled Bonds

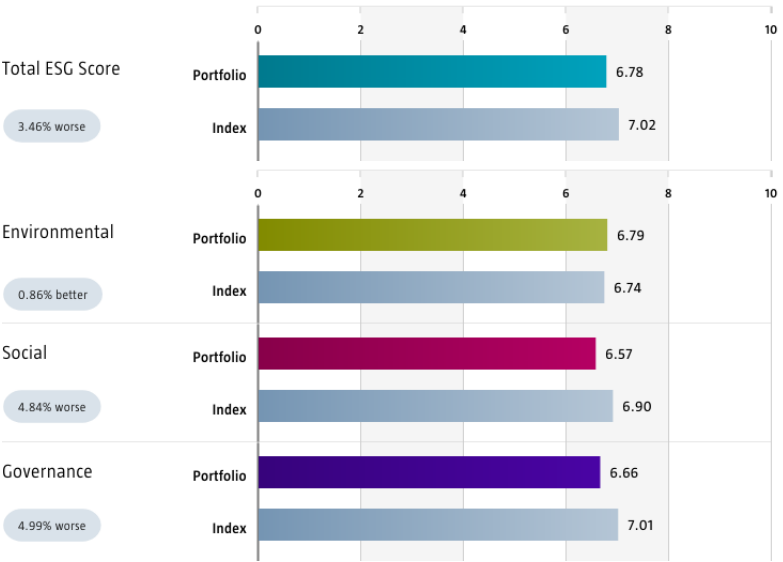
The ESG-labeled bond chart displays the portfolio's exposure to ESG-labeled bonds. Specifically, green bonds, social bonds, sustainability bonds, and sustainability-linked bonds. This is calculated as a sum of weights for those bonds in the portfolio that have one of above mentioned labels. Index exposure figures are provided alongside the portfolio exposure figures, highlighting the difference with the index.



Source: Bloomberg in conjunction with data derived from internal processes. BLOOMBERG® is a trademark and service mark of Bloomberg Finance LP. and its affiliates (collectively "Bloomberg").

Country Sustainability Ranking

The charts displays the portfolio's Total, Environmental, Social and Governance scores following Robeco's Country Sustainability Ranking methodology. These are calculated using the portfolio components' weights and respective country's scores. The scores includes considerations of more than 50 separate indicators, each capturing a unique sustainability feature across environmental, social and governance dimensions at the country level. Index scores are provided alongside the portfolio scores, highlighting the portfolio's relative ESG performance. Only holdings mapped as sovereign bonds are included in the figures.



Source: Robeco. Certain underlying data is sourced from third parties (such as e.g. IMF, OECD and World Bank including Worldwide Governance Indicators Control of Corruption, as well as content from ISS and SanctIO).

Engagement

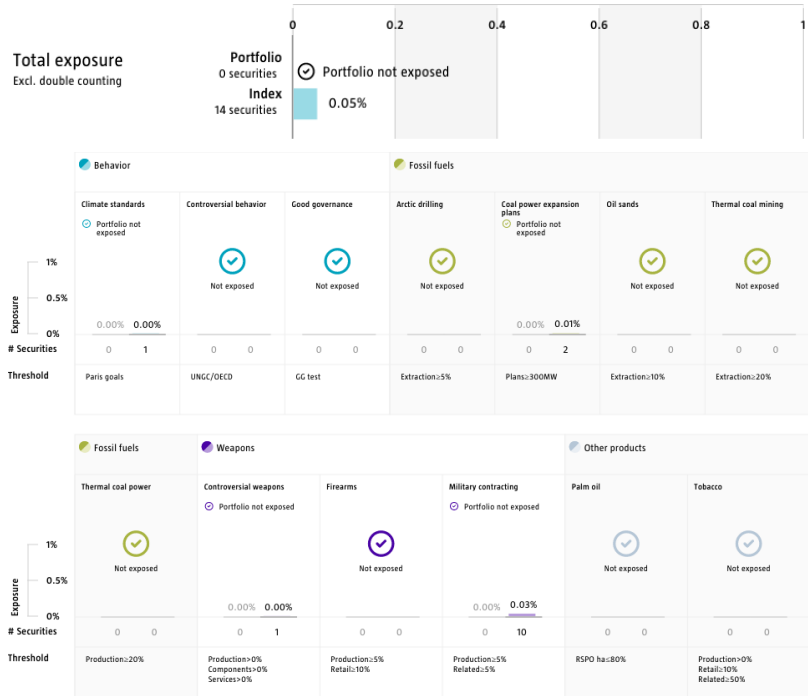
Robeco distinguishes between three types of engagement. Value Engagement focuses on long-term issues that are financially material and/or are causing adverse sustainability impacts. The themes can be broken into Environmental, Social, Governance, or Voting-related. SDG Engagement aims to drive a clear and measurable improvement in a company's SDG contribution. Enhanced engagement is triggered by misconduct and focuses on companies severely breaching international standards. The report is based on all companies in the portfolio for which engagement activities have taken place during the past 12 months. Note that companies may be under engagement in multiple categories simultaneously. While the total portfolio exposure excludes double counting, it may not equal the sum of individual category exposures.

	Portfolio exposure	# companies engaged with	# activities with companies engaged with
Total (* excluding double counting)	4.98%	20	66
Environmental	1.93%	9	31
Social	2.15%	6	18
Governance	0.88%	2	3
Sustainable Development Goals	0.10%	2	11
Voting Related	0.76%	3	3
Enhanced	0.00%	0	0

Source: Robeco. Data derived from internal processes.

Exclusions

The Exclusions charts display the degree of adherence to exclusion applied by Robeco. For reference, index exposures are shown beside that of the portfolio. Thresholds are based on revenues unless otherwise indicated. For more information about the exclusion policy and which level applies, please refer to the Exclusion Policy and Exclusion List available on Robeco.com.



Source: We use several data sources such as Sustainalytics, RSPO (Roundtable on Sustainable Palm Oil), World Bank, Freedom House, Fund for Peace and International Sanctions; further policy document available [Exclusion Policy](#)

Investment policy

RobecoSAM Climate Global Bonds is an actively managed fund that invests in bonds globally. The selection of these bonds is based on fundamental analysis. The fund aims to reduce the carbon footprint of the portfolio and thereby contribute towards the goals of the Paris agreement to keep the maximum global temperature rise well-below 2° C. The fund invests in worldwide bonds and other marketable debt securities and instruments (which may include short dated fixed or floating rate securities) issued or guaranteed by OECD member states and by companies based in OECD countries. The fund's objective is also to provide long term capital growth.

The fund promotes E&S (i.e. Environmental and Social) characteristics within the meaning of Article 8 of the European Sustainable Finance Disclosure Regulation, integrates sustainability risks in the investment process and applies Robeco's Good Governance policy. The fund aims to reduce the carbon footprint of the portfolio and thereby contribute towards the goals of the Paris agreement to keep the maximum global temperature rise well-below 2° C. The fund applies sustainability indicators, including but not limited to normative exclusions and activity-based exclusions in line with Article 12 of the EU regulation on Climate Transition Benchmarks, EU Paris-aligned Benchmarks and sustainability-related disclosures for benchmark.

The fund is managed against a benchmark that is consistent with the sustainable investment objectives pursued by the fund. It aims to align with the Paris Agreement requirements on greenhouse gas emission reduction. For corporate bonds the Benchmark aims to represent the performance of an investment strategy that is aligned with the technical standards for EU Paris Aligned benchmarks in areas such as exclusions and carbon reduction objectives. For investments in government bonds in the Benchmark, the long term aim is to strive for a 7% year-on-year decarbonization as long as this is realistically feasible and technical standards are not applicable. The Benchmark differs from a broad market index in that the latter does not take into account in its methodology any criteria for alignment with the Paris Agreement on greenhouse gas emission reduction and related exclusions.

Fund manager's CV

Bob Stoutjesdijk is Portfolio Manager and member of Robeco's Global Macro team. He joined Robeco in 2019. He worked at Shell Asset Management Company as Portfolio Manager Fixed Income Sovereign Credit in the period 2011-2019. Prior to that, he was Portfolio Manager Fixed Income at SNS Asset Management. He started his career as Quantitative Analyst at APG Asset Management in 2008. Bob has a Master's in Economics & Business from Erasmus University Rotterdam and is a CAIA® Charterholder. Michiel de Bruin is Head of Global Macro and Portfolio Manager. Prior to joining Robeco in 2018, Michiel was Head of Global Rates and Money Markets at BMO Global Asset Management in London. He held various other positions before that, including Head of Euro Government Bonds. Before he joined BMO in 2003, he was, among others, Head of Fixed Income Trading at Deutsche Bank in Amsterdam. Michiel started his career in the industry in 1986. He holds a post graduate diploma investment analyses from the VU University in Amsterdam and is a Certified EFFAS Analyst (CEFA) charterholder. He holds a Bachelor's in Applied Sciences from University of Applied Sciences in Amsterdam. Stephan van IJendoorn is Portfolio Manager and member of Robeco's Global Macro team. Prior to joining Robeco in 2013, Stephan was employed by F&C Investments as a Portfolio Manager Fixed Income and worked in similar functions at Allianz Global Investors and A&O Services prior to that. Stephan started his career in the Investment Industry in 2003. He holds a Bachelor's in Financial Management, a Master's in Investment Management from VU University Amsterdam and is Certified European Financial Analyst (CEFA) Charterholder.

Fiscal product treatment

The fund is established in Luxembourg and is subject to the Luxembourg tax laws and regulations. The fund is not liable to pay any corporation, income, dividend or capital gains tax in Luxembourg. The fund is subject to an annual subscription tax ('tax d'abonnement') in Luxembourg, which amounts to 0.05% of the net asset value of the fund. This tax is included in the net asset value of the fund. The fund can in principle use the Luxembourg treaty network to partially recover any withholding tax on its income.

Morningstar

Copyright © Morningstar Benelux. All Rights Reserved. The information contained herein: (1) is proprietary to Morningstar and/or its content providers; (2) may not be copied or distributed; and (3) is not warranted to be accurate, complete or timely. Neither Morningstar nor its content providers are responsible for any damages or losses arising from any use of this information. Past performance is no guarantee of future results. For more information on Morningstar, please refer to www.morningstar.com

Sustainability images

The figures shown in the sustainability visuals are calculated on subfund level.

Bloomberg disclaimer

Bloomberg or Bloomberg's licensors own all proprietary rights in the Bloomberg Indices. Neither Bloomberg nor Bloomberg's licensors approves or endorses this material, or guarantees the accuracy or completeness of any information herein, or makes any warranty, express or implied, as to the results to be obtained therefrom and, to the maximum extent allowed by law, neither shall have any liability or responsibility for injury or damages arising in connection therewith.

Disclaimer

This document has been carefully prepared by Robeco Institutional Asset Management B.V. (Robeco). The information contained in this publication is based upon sources of information believed to be reliable. Robeco is not answerable for the accuracy or completeness of the facts, opinions, expectations and results referred to therein. Whilst every care has been taken in the preparation of this document, we do not accept any responsibility for damage of any kind resulting from incorrect or incomplete information. This document is subject to change without notice. The value of the investments may fluctuate. Past performance is no guarantee of future results. If the currency in which the past performance is displayed differs from the currency of the country in which you reside, then you should be aware that due to exchange rate fluctuations the performance shown may increase or decrease if converted into your local currency. Unless otherwise stated, performances are i) net of fees based on transaction prices and ii) with dividends reinvested. Please refer to the prospectus and the Key Information Document of the funds for further details. These are available at the Robeco offices or via the www.robeco.com website. The ongoing charges mentioned in this publication express the operational costs including management fee, service fee, taxe d'abonnement, depositary fee and bank charges and is the one stated in the fund's latest annual report at closing date. The information contained in this document is solely intended for professional investors under the Dutch Act on the Financial Supervision (Wet financieel toezicht) or persons who are authorized to receive such information under any other applicable laws. Robeco Institutional Asset Management B.V. has a license as manager of UCITS and AIFs from the Netherlands Authority for the Financial Markets in Amsterdam.