

abrdn SICAV II - Global Impact Equity Fund

This is a marketing communication. Please refer to the Prospectus of the UCITS/Information document and the Key Investor Information Document (KIID) or Key Information Document (KID) as applicable before making any final investment decisions
B Acc EUR

30 November 2023

Objective

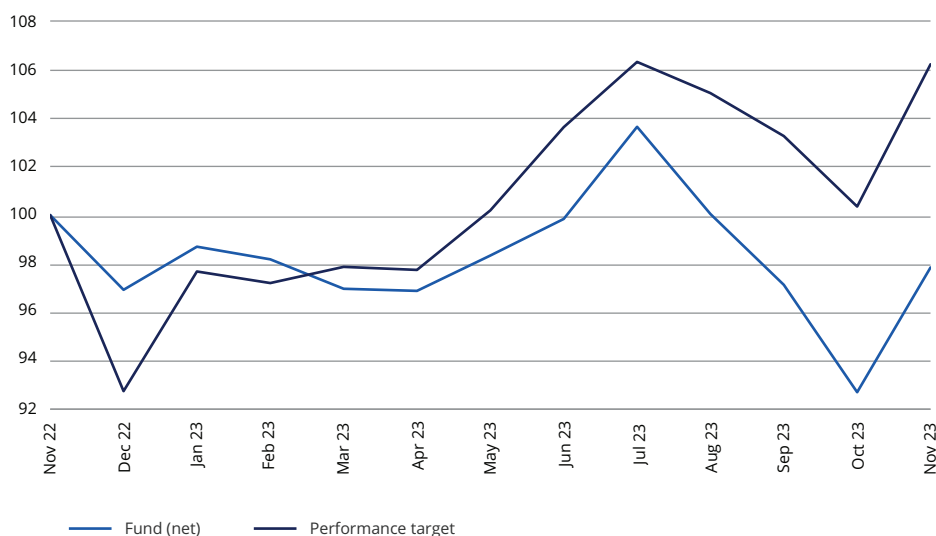
The Fund aims to provide long term growth by investing in companies listed globally that aim to create positive measurable environmental and/or social impacts.

The Fund aims to outperform MSCI AC World Index (USD) benchmark before charges.

Portfolio securities

- The Fund invests at least 90% of its assets in its investment universe which is equities and equity-related securities of companies that are under active research coverage by the Investment team and are listed on global stock exchanges including Emerging Markets.
- The Fund may invest up to 10% of its net assets in Mainland China through the Shanghai-Hong Kong and Shenzhen-Hong Kong Stock Connect programme or by any other available means.
- All equity and equity related securities will follow the abrdn Global Impact Equity Investment Approach (the "Investment Approach") which applies the UN Agenda for Sustainable Development whose current framework involves a series of Sustainable Development Goals (SDGs) and may change over time. By assessing companies' ability to deliver intentional positive outcomes for the environment and society the approach identifies companies with technologies, products or services and business models that provide solutions aligned to a range of impact pillars which include sustainable energy, circular economy, amongst others.
- The Fund may also invest up to 10% of NaV in companies that enable progress aligned to the pillars but data prevents a directly attributable impact analysis.
- A set of company exclusions include, but are not limited to, criteria related to the UN Global Compact, Tobacco Manufacturing, and Controversial Weapons.
- Details of the Investment Approach and information on the list and scope of specific criteria are published at www.abrdn.com under "Fund Centre".
- Financial derivative instruments, money-market instruments and cash may not adhere to this approach.

Performance



Cumulative and annualised performance

	1 month	6 months	Year to date	1 year	3 years (p.a.)	5 years (p.a.)	10 years (p.a.)
Fund (net) (%)	5,57	-3,44	-2,02	-5,04	n/a	n/a	n/a
Performance target (%)	5,86	6,03	14,58	6,24	n/a	n/a	n/a

Discrete annual returns - year to 30/11

	2023	2022	2021	2020	2019	2018	2017	2016	2015	2014
Fund (net) (%)	-5,04	n/a	n/a	n/a	n/a	n/a	n/a	n/a	n/a	n/a
Performance target (%)	6,24	n/a	n/a	n/a	n/a	n/a	n/a	n/a	n/a	n/a

Performance Data: Share Class B Acc EUR

Benchmark history: Performance target – MSCI AC World (EUR)

Source: abrdn. Basis: Total Return, NAV to NAV, net of annual charges, gross income reinvested, (EUR).

Costs may increase or decrease as a result of currency and exchange rate fluctuations. This may impact what you might get back. "Fund (Net)" refers to the actual unit price performance of the shareclass shown; "Fund(Gross)" adds back charges such as the annual management charge to present performance on the same basis as the performance target / performance comparator / portfolio constraining benchmark. All return data includes investment management fees, operational charges and expenses, and assumes the reinvestment of all distributions. The returns provided do not reflect the initial sales charge and, if included, the performance shown would be lower.

The fund moved investment vehicle from abrdn SICAV III to abrdn SICAV II on 22nd November 2022. Performance shall be reported on next month's factsheet.



Key facts

Fund manager(s)	Dominic Byrne & Sarah Norris
Fund launch date	24 November 2022
Share class launch date	24 November 2022
Management company	abrdn Investments Luxembourg S.A.
Fund size	USD 115,5m
Number of holdings	42
Performance target	MSCI AC World (EUR)
Entry charge (up to) ¹	5,00%
Annual management charge	0,70%
Ongoing charge figure ²	0,88%
Minimum initial investment	USD 1.000.000
Fund type	SICAV
Valuation point	13:00 (LUX time)
Base currency	USD
Share class currency	EUR
Sedol	BP69PV1
ISIN	LU2534880690
Bloomberg	ASGIBAU LX
Citicode	YYIX
Valoren	122239340
Domicile	Luxembourg

Risk and reward profile



Key risks

- The value of investments and the income from them can fall and investors may get back less than the amount invested.
- The fund invests in equity and equity related securities. These are sensitive to variations in the stock markets which can be volatile and change substantially in short periods of time.
- Interpretation of 'Impact Investing' will vary according to beliefs and values. Consequently the fund may invest in companies which do not align with the personal views of any individual investor.

Investor Service
+ 352 4640 1 0820 (International)
Fax Dealing Service + 352 2452 9056

www.abrdn.nl

Management process

- The Fund is actively managed and will be a concentrated portfolio and will not be restricted by index weightings, sector constraints, or company size.
- The Fund assesses the companies' ability to deliver intentional positive outcomes for the environment and society.
- Progress against each pillar is measured using the SDGs' relevant key performance indicators (KPIs), linking the company's ability to affect positive change in the context of these overarching global challenges.
- Through the application of the Investment Approach, the Fund has an expected minimum of 75% in Sustainable Investments.
- Engagement with company management teams is a part of our investment process and ongoing stewardship programme. Our process evaluates the ownership structures, governance and management quality of the companies.
- The benchmark is also used as a basis for setting risk constraints and don't have any sustainable factors.
- In order to achieve its objective, the Fund will take positions whose weightings diverge from the benchmark or invest in securities which are not included in the benchmark. The investments of the Fund may deviate significantly from the components and their weightings in the benchmark.
- Due to the active nature of the management process, the Fund's performance profile may deviate significantly from that of the benchmark over the longer term.

Top Ten Holdings

UnitedHealth Group Inc	5,0
Novo Nordisk A/S	4,9
Tetra Tech Inc	4,7
RELX PLC	4,0
HDFC Bank Ltd	3,9
Schneider Electric SE	3,9
AXA SA	3,7
NextEra Energy Inc	3,4
Merck & Co Inc	3,3
ASML Holding NV	3,3
Assets in top ten holdings	40,1

Country (%)

United States of America	47,8
Denmark	7,8
United Kingdom	7,6
India	5,0
France	3,6
Netherlands	3,2
Indonesia	3,0
Taiwan, Republic of China	2,9
Other	16,8
Cash	2,2

Source : abrdn 30/11/2023
Figures may not always sum to 100 due to rounding.

Sector (%)

Industrials	24,4
Health Care	20,9
Financials	17,0
Information Technology	10,2
Utilities	8,5
Real Estate	6,1
Materials	4,8
Consumer Discretionary	4,5
Other	1,5
Cash	2,2

- (d) The fund invests in emerging market equities and / or bonds. Investing in emerging markets involves a greater risk of loss than investing in more developed markets due to, among other factors, greater political, tax, economic, foreign exchange, liquidity and regulatory risks.
- (e) The fund may invest in companies with Variable Interest Entity (VIE) structures in order to gain exposure to industries with foreign ownership restrictions. There is a risk that investments in these structures may be adversely affected by changes in the legal and regulatory framework.
- (f) Investing in China A shares involves special considerations and risks, including greater price volatility, a less developed regulatory and legal framework, exchange rate risk/controls, settlement, tax, quota, liquidity and regulatory risks.
- (g) Applying ESG and sustainability criteria in the investment process may result in the exclusion of securities within the fund's benchmark or universe of potential investments. The interpretation of ESG and sustainability criteria is subjective meaning that the fund may invest in companies which similar funds do not (and thus perform differently) and which do not align with the personal views of any individual investor.
- (h) The use of derivatives carries the risk of reduced liquidity, substantial loss and increased volatility in adverse market conditions, such as a failure amongst market participants. The use of derivatives may result in the fund being leveraged (where market exposure and thus the potential for loss by the fund exceeds the amount it has invested) and in these market conditions the effect of leverage will be to magnify losses.

Derivative usage

- The Fund may utilise financial derivative instruments for hedging and/or investment purposes, or to manage foreign exchange risks. The use of derivatives for hedging and/or investment purposes is expected to be very limited, mainly in those cases where there are significant inflows into the Fund so that cash can be invested while the Fund's investments in equity and equity related securities is maintained.

A summary of investor rights can be found in English on our website - www.abrdn.com/corporate/legal. To help you understand this fund and for a full explanation of risks and the overall risk profile of this fund and the shareclasses within it, please refer to the Key Investor Information Documents available in the local language, and Prospectus available in English, which are available on our website www.abrdn.nl. The Prospectus also contains a glossary of key terms used in this document. The Fund Management company may terminate arrangements for marketing the fund under the Cross-border Distribution Directive denotification process.

This Fund concerns the acquisition of units or shares in a fund, and not in a given underlying asset such as a building or shares of a company.

¹These are the maximum charges that we might take out of your money before it is invested. In some cases, the charges may be less and you should speak to your financial advisor about this.

²The Ongoing Charge Figure (OCF) is the overall cost shown as a percentage of the value of the assets of the fund. It is made up of the Annual Management Charge (AMC) of 0.70% and other charges. It does not include any initial charges or the cost of buying and selling stocks for the fund. The Ongoing Charges figure can help you compare the annual operating expenses of different funds. There are other applicable costs. The other operating charges figure (OOC) is the total expenses paid by each share class, against its average net asset value. This includes the annual management charge, the other operating expenses and any synthetic element to incorporate the ongoing charges of any underlying qualifying investments. The OOC can fluctuate as underlying costs change. Where underlying costs have changed, the OOC disclosed in the Fund offering Documents will be updated to reflect current changes.

The fund is a Luxembourg-domiciled UCITS fund, incorporated as a Société Anonyme and organized as a Société d'Investissement à Capital Variable (a "SICAV"). The fund has been authorised for public sale in certain jurisdictions and private placement exemptions may be available in others. It is not intended for distribution or use by any person or entity that is a citizen or resident of or located in any jurisdiction where such distribution, publication or use would be prohibited.

The information contained in this marketing document is intended to be of general interest only and should not be considered as an offer, investment recommendation or solicitation to deal in the shares of any securities or financial instruments. Subscriptions for shares in the fund may only be made on the basis of the latest prospectus, relevant Key Investor Information Document (KIID) or Key Information Document (KID) as applicable, together with the latest audited annual report (and subsequent unaudited semi-annual report, if published) and and, in the case of UK investors, the Supplementary Information (SID) for the fund which provides additional information as well as the risks of investing. These may be obtained free of charge from the Fund Management company abrdn Investments Luxembourg S.A. 35a, Avenue J.F. Kennedy, L-1855 Luxembourg, on www.abrdn.com, or the local paying agents detailed below. Prospective investors should read the prospectus carefully before investing. In Switzerland these documents along with the fund's articles of association can be obtained from the fund's Representative and Paying Agent, BNP Paribas Securities Services, Paris, succursale de Zurich, Selnaustrasse 16, CH 8002 Zürich, Switzerland (Tel. 058 212 63 77).

In Spain, these documents can be obtained from Allfunds Bank S.A., c / Estafeta nº6 (La Moraleja), Plaza de la Fuente Complex -Building 3-28109, Alcobendas -Madrid- Spain. For the purposes of distribution in Spain, the Company has been registered with the Comisión Nacional del Mercado de Valores under the number 814.

In France, these documents can be obtained from the Centralising Correspondent Agent CACEIS Bank France, 3, rue d'Antin, 1/3 Place Valhubert, 75013 Paris, France.

In Italy these documents can be obtained from the Paying Agent, SocGen S.p.A Via Benigno Crespi, 19/A, 20159 Milan, Italy. These documents are also available on www.eifs.lu/abrdn, including: The articles of association; Information on how orders (subscription, repurchase and redemption) can be made and how repurchase and redemption proceeds are paid; Information and access to procedures and arrangements related to investors' rights and complaints handling.

In The United Kingdom, deemed authorised and regulated by the Financial Conduct Authority. Details of the Temporary Permissions Regime, which allows EEA-based firms to operate in the UK for a limited period while seeking full authorisation, are available on the Financial Conduct Authority's website. Under Luxembourg law, there is no compensation scheme available to UK investors in funds managed by such firms, which includes this fund.

Any data contained herein which is attributed to a third party ("Third Party Data") is the property of (a) third party supplier(s) (the "Owner") and is licensed for use by abrdn*. Third Party Data may not be copied or distributed. Third Party Data is provided "as is" and is not warranted to be accurate, complete or timely. To the extent permitted by applicable law, none of the Owner, abrdn* or any other third party (including any third party involved in providing and/or compiling Third Party Data) shall have any liability for Third Party Data or for any use made of Third Party Data. Neither the Owner nor any other third party sponsors, endorses or promotes the fund or product to which Third Party Data relates.

* abrdn means the relevant member of abrdn group, being abrdn plc together with its subsidiaries, subsidiary undertakings and associated companies (whether direct or indirect) from time to time.

The MSCI information may only be used for your internal use, may not be reproduced or disseminated in any form and may not be used as a basis for or a component of any financial instruments or products or indices. None of the MSCI information is intended to constitute investment advice or a recommendation to make (or refrain from making) any kind of investment decision and may not be relied on as such. Historical data and analysis, should not be taken as an indication or guarantee of any future performance analysis forecast or prediction. The MSCI information is provided on an "as is" basis and the user of this information assumes the entire risk of any use made of this information. MSCI, each of its affiliates and each other person involved in or related to compiling, computing or creating any MSCI information (collectively, the "MSCI" Parties) expressly disclaims all warranties (including without limitation, any warranties of originality, accuracy, completeness, timeliness, non-infringement, merchantability and fitness for a particular purpose) with respect to this information. Without limiting any of the foregoing, in no event shall any MSCI Party have any liability for any direct, indirect, special, incidental, punitive, consequential (including, without limitation, lost profits) or any other damages (www.msci.com).

United Kingdom (UK): Issued by abrdn Investments Luxembourg S.A. 35a, Avenue J.F. Kennedy, L-1855 Luxembourg, RCS No.B120637. Authorised in Luxembourg and regulated by CSSF.

Austria, Belgium, Cyprus, Denmark, Finland, France, Germany, Gibraltar, Greece, Iceland, Ireland, Italy, Luxembourg, Malta, Netherlands, Norway, Portugal, Spain, and Sweden: Issued by abrdn Investments Luxembourg S.A. 35a, Avenue J.F. Kennedy, L-1855 Luxembourg, RCS No.B120637. Authorised in Luxembourg and regulated by CSSF.

Switzerland: Issued by abrdn Investments Switzerland AG. Registered in Switzerland (CHE-114.943.983) at Schweizergasse 14, 8001 Zürich.