

EQUITY

# AXA WF Framlington Talents Global A EUR

## Key figures (in EUR)

<b>Total assets under management (in million)</b>	<b>99.76</b>	<b>Current NAV (A)</b>	<b>558.94</b>
		12 month NAV price High	663.36
		12 month NAV price Low	532.69

## Performance evolution (in EUR)

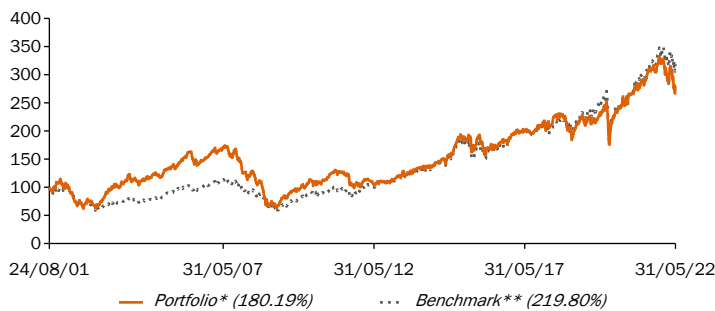
### Annualized performance

	1 Y.	3 Y.	5 Y.	10 Y.
Portfolio*	-3.14%	10.30%	7.01%	10.26%
Benchmark**	6.39%	13.18%	10.06%	12.23%
Excess return	-9.53%	-2.87%	-3.05%	-1.97%

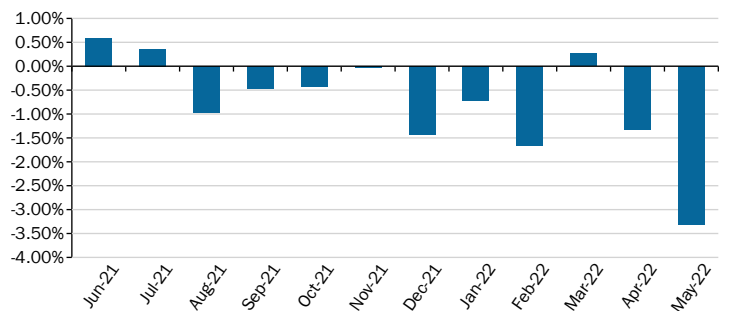
### Cumulative performance

	1 M.	3 M.	6 M.	YTD	Since launch
Portfolio*	-4.72%	-5.71%	-12.43%	-13.72%	180.19%
Benchmark**	-1.41%	-1.34%	-4.75%	-7.47%	219.80%
Excess return	-3.32%	-4.37%	-7.68%	-6.25%	-39.61%

### Performance evolution



### Monthly excess return



### Monthly performance

	Jan	Feb	Mar	Apr	May	Jun	Jul	Aug	Sep	Oct	Nov	Dec	Total
2018 Portfolio*	2.95%	-0.21%	-2.43%	1.83%	5.86%	-1.51%	0.82%	2.86%	-1.53%	-8.88%	1.33%	-9.46%	-9.14%
2018 Benchmark**	1.83%	-2.15%	-3.02%	2.84%	3.63%	-0.56%	2.80%	1.35%	0.61%	-5.17%	1.53%	-7.93%	-4.85%
2019 Portfolio*	7.45%	4.12%	2.99%	3.79%	-7.75%	5.15%	2.25%	-2.57%	1.09%	-0.51%	5.08%	1.00%	23.35%
2019 Benchmark**	7.49%	3.46%	2.69%	3.57%	-5.40%	4.26%	2.58%	-1.30%	3.14%	0.39%	3.65%	1.69%	28.93%
2020 Portfolio*	0.88%	-6.33%	-10.28%	12.26%	2.88%	2.65%	2.34%	5.28%	-0.51%	-1.25%	6.65%	0.74%	14.31%
2020 Benchmark**	0.17%	-7.26%	-13.41%	10.91%	2.75%	2.20%	0.00%	4.93%	-1.30%	-1.78%	9.38%	2.30%	6.65%
2021 Portfolio*	-0.23%	1.20%	4.90%	2.69%	-0.31%	5.05%	1.05%	1.99%	-2.84%	4.84%	0.30%	1.50%	21.73%
2021 Benchmark**	0.25%	2.41%	6.03%	1.90%	-0.01%	4.46%	0.70%	2.97%	-2.35%	5.26%	0.34%	2.94%	27.54%
2022 Portfolio*	-4.26%	-4.43%	3.41%	-4.29%	-4.72%	-	-	-	-	-	-	-	-13.72%
2022 Benchmark**	-3.54%	-2.77%	3.13%	-2.97%	-1.41%	-	-	-	-	-	-	-	-7.47%

The figures provided relate to previous months or years and past performance is not a reliable indicator as to future performance.

\* 1st NAV date: 24/08/2001

Fund AXA WF Framlington Talents benefits from the historical evolution of the performance of the French fund Talents, since its creation on the 30/04/2004, because they have the same investment objectives.

\*\* Benchmark : Please refer to the Benchmark section in the characteristics/disclaimers part of the document.

Source(s): AXA Investment Managers - MSCI as at 31/05/2022

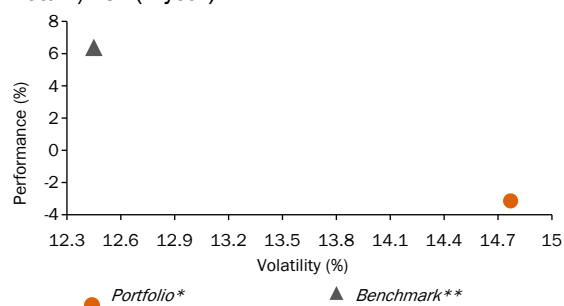
Editor: AXA Investment Managers Paris S.A.

## Risk analysis (please refer to glossary of terms on our website)

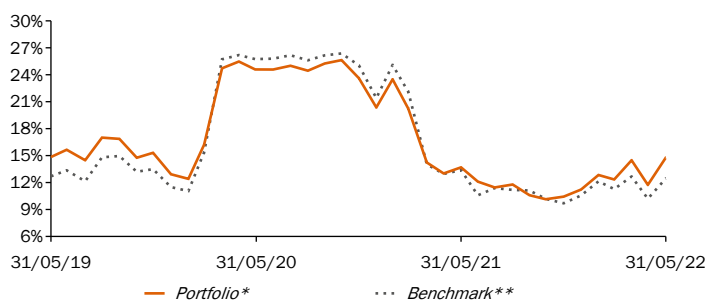
## Risk ratios

	1 Y.	3 Y.	5 Y.	10 Y.
<b>Annualized volatility</b>				
Portfolio*	14.77%	14.56%	14.50%	12.66%
Benchmark**	12.45%	14.94%	13.75%	11.95%
<b>Sharpe ratio</b>				
Portfolio*	-0.06	0.86	0.63	0.97
Benchmark**	0.55	0.91	0.76	1.04
<b>Relative risk ('Tracking Error')</b>				
	4.28%	4.59%	4.75%	4.18%
<b>Information ratio</b>				
	-1.82	-0.20	-0.24	-0.01

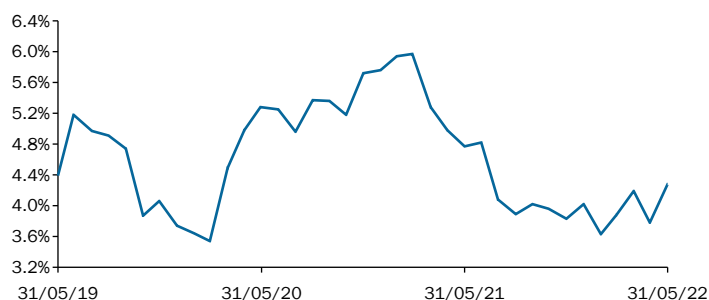
## Return/risk (1 year)



## Volatility evolution (annualized over 1 year)



## Tracking Error evolution (annualized over 1 year)



\* 1st NAV date: 24/08/2001

Fund AXA WF Framlington Talents benefits from the historical evolution of the performance of the French fund Talents, since its creation on the 30/04/2004, because they have the same investment objectives.

\*\* Benchmark : Please refer to the Benchmark section in the characteristics/disclaimers part of the document.

Source(s): AXA Investment Managers - MSCI as at 31/05/2022

## Objective and investment strategy

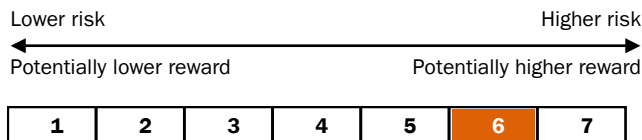
The Sub-Fund seeks to achieve long term capital growth measured in Euro by investing in equities and equity related securities issued by international companies of all capitalisations displaying entrepreneurial characteristics.

## Benchmark

Since: 01/01/2015  
100% MSCI AC World Total Return Net

## Risk characteristics

**Recommended Investment Time Horizon :** This Sub-Fund may not be suitable for investors who plan to withdraw their contribution within 5 years.



The risk category is calculated using historical performance data and may not be a reliable indicator of the Sub-Fund's future risk profile.

The risk category shown is not guaranteed and may shift over time.  
The lowest category does not mean risk free.

**Why is this Sub-Fund in this category?**

The capital of the Sub-Fund is not guaranteed. The Sub-Fund is invested in financial markets and uses techniques and instruments which may be subject to sudden and significant variation, which may result in substantial gains or losses.

### Significant risks not taken account by the risk indicator

Counterparty Risk: Risk of bankruptcy, insolvency, or payment or delivery failure of any of the Sub-Fund's counterparties, leading to a payment or delivery default. Liquidity Risk: risk of low liquidity level in certain market conditions that might lead the Sub-Fund to face difficulties valuing, purchasing or selling all/part of its assets and resulting in potential impact on its net asset value. Credit Risk: Risk that issuers of debt securities held in the Sub-Fund may default on their obligations or have their credit rating downgraded, resulting in a decrease in the Net Asset Value. Impact of any techniques such as derivatives: Certain management strategies involve specific risks, such as liquidity risk, credit risk, counterparty risk, legal risk, valuation risk, operational risk and risks related to the underlying assets. The use of such strategies may also involve leverage, which may increase the effect of market movements on the Sub-Fund and may result in significant risk of losses.

## General characteristics

Legal form	SICAV
Legal country	Luxembourg
Launch date	24/08/01
Fund currency	EUR

Shareclass currency	EUR
Valuation	Daily
Share type	Accumulation
ISIN code	LU0189847683
Maximum initial fees	5.5%
Ongoing charges	1.76%
Financial management fee*	1.5%
Maximum management fees	1.5%
Performance fee : <b>none</b>	
Management company	AXA Funds Management S.A.
(Sub) Financial delegation	AXA Investment Managers UK Limited
Delegation of account administration	State Street Bank International GmbH (Luxembourg Branch)
Custodian	State Street Bank International GmbH (Luxembourg Branch)

\*As disclosed in the most recent Annual Report, the ongoing charges calculation excludes performance fees, but includes management and applied services fees. The effective Applied Service Fee is accrued at each calculation of the Net Asset Value and included in the ongoing charges of each Share Class.

## Subscription / Redemption

The subscription, conversion or redemption orders must be received by the Registrar and Transfer Agent on any Valuation Day no later than 3 p.m. Luxembourg time. Orders will be processed at the Net Asset Value applicable to the following Valuation Day. The investor's attention is drawn to the existence of potential additional processing time due to the possible involvement of intermediaries such as Financial Advisers or distributors. The Net Asset Value of this Sub-Fund is calculated on a daily basis.

## Disclaimers

Performance calculations are net of management or distribution fees. Performance are shown as annual performance (365 days). Performance calculations are based on the reinvestment dividend.

Risk Ratios are calculated from gross performances.

In the case where the currency of investment is different from the Fund's reference currency the gains are capable of varying considerably due to the fluctuations of the exchange rate.

The fund is registered for public distribution in Luxembourg. Please check the countries of registration with the asset manager, or on the web site [www.axa-im-international.com](http://www.axa-im-international.com), where a fund registration map is available.

The tax treatment relating to the holding, acquisition or disposal of shares or units in the fund depend on each investor's tax status or treatment and may be subject to change. Any potential investor is strongly encouraged to seek advice from its own tax advisors.

Depending on the investment strategy used the information contained herein may be more detailed than the information disclosed in the prospectus. Any such information (i) does not constitute a representation or undertaking on the part of the investment manager; (ii) is subjective and (iii) may be modified at any time within the limits provided in the fund prospectus.

This document is for informational purposes only and does not constitute investment research or financial analysis relating to transactions in financial instruments as per MIF Directive (2014/65/EU), nor does it constitute on the part of AXA Investment Managers or its affiliated companies an offer to buy or sell any investments, products or services, and should not be considered as solicitation or investment, legal or tax advice, a recommendation for an investment strategy or a personalized recommendation to buy or sell securities.

The information contained herein is intended solely for the entity and/or person(s) to which it has been delivered, unless otherwise allowed under applicable agreements. AXA Investment Managers hereby disclaims any responsibility for any subsequent reproduction, redistribution or transmittal, along with any liability stemming from such activities. Due to its simplification, this document is partial and the information can be subjective. AXA Investment Managers Paris may but shall not be obligated to update or otherwise revise this document without any prior notice. All information in this document is established on the accounting information or on market data basis. All accounting information is un-audited. AXA IM and/or its affiliates may receive or pay fees or rebates in relation to the Mutual Fund or investment vehicle. AXA Investment Managers Paris disclaims any and all liability relating to a decision based on or for reliance on this document. The most recent prospectus is available to all investors and must be read prior subscription and the decision whether to invest or not must be based on the information contained in the prospectus.

AXA Investment Managers Paris, a company incorporated under the laws of France, having its registered office located at Tour Majunga, 6, Place de la Pyramide 92908 Paris - La Défense cedex – France, registered with the Nanterre Trade and Companies Register under number 353 534 506, a Portfolio Management Company, holder of COB approval no. GP 92-08, issued on 7 April 1992.

AXA Funds Management, a société anonyme organized under the laws of Luxembourg with the Luxembourg Register Number B 32 223RC, and whose registered office is located at 49, Avenue J.F. Kennedy L-1885 Luxembourg

AXA WORLD FUNDS 's registered office is 49, avenue J.F Kennedy L-1885 Luxembourg. The Company is registered under the number B. 63.116 at the "Registre de Commerce et des Sociétés" The Company is a Luxembourg SICAV UCITS IV approved by the CSSF.

#### MSCI

Neither MSCI nor any other party involved in or related to compiling, computing or creating the MSCI data makes any express or implied warranties or representations with respect to such data (or the results to be obtained by the use thereof), and all such parties hereby expressly disclaim all warranties of originality, accuracy, completeness, merchantability or fitness for a particular purpose with respect to any of such data. Without limiting any of the foregoing, in no event shall MSCI, any of its affiliates or any third party involved in or related to compiling, computing or creating the data have any liability for any direct, indirect, special, punitive, consequential or any other damages (including lost profits) even if notified of the possibility of such damages. No further distribution or dissemination of the MSCI data is permitted without MSCI's express written consent.

## For your information

#### Fin. Info.

Bloomberg AXAWFTA LX

Regulatory documents are available on demand

AXA Investment Managers Paris  
a company incorporated under the laws of France, having its registered office located at  
Tour Majunga  
6, Place de la Pyramide  
92908 Paris - La Défense cedex – France  
a Portfolio Management Company, holder of AMF approval no. GP 92-08, issued on 7 April 1992,  
A french corporation (Public Limited Company) with capital of euros 1,384,380  
RCS Nanterre 353 534 506