

E Class, Accumulation and Income Shares

For the month ending 31 July 2010

FUND INFORMATION

Fund Description: The Global High Yield Bond Fund seeks to maximise total return and limit risk with an emphasis on upper tier high yield bonds. The fund invests at least two-thirds of its assets in a diversified portfolio of global high yield bonds rated lower than Baa by Moody's or BBB by S&P with a maximum of 20% of its assets in securities rated lower than B.

Investor Benefits: This Fund offers compelling diversification benefits and the opportunity to gain exposure to different sectors of the economy.

The Fund Advantage: The Fund employs PIMCO's fundamental research process, including top-down economic views, bottom-up security selection and extensive global resources.

BASIC FACTS

	Accumulation	Income
Bloomberg Ticker	PIMGHYB	PIMGBHY
ISIN	IE00B1D7YM41	IE00B193ML14
Sedol	B1D7YM4	B193ML1
Valoren	CH2701720	CH2637854
WKN	A0LA8M	A0KDVP
Unified Management Fee	1.45%	1.45%
Inception Date	11/09/2006	31/07/2006
Fund Type	UCITS III	
Portfolio Manager	Andrew R. Jessop	
Fund Assets	1.4 (USD in Billions)	
Distribution Income Class Shares	Quarterly	

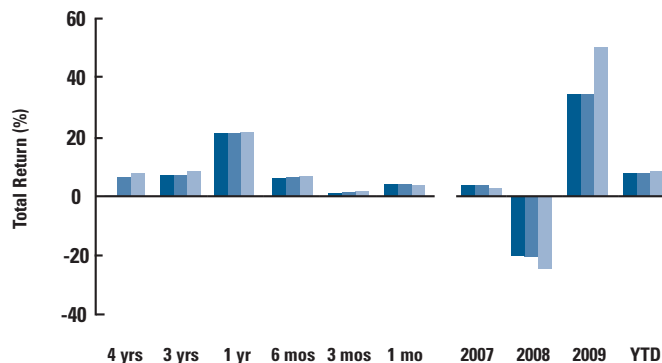
FUND STATISTICS

Effective Duration (yrs)	4.15
Benchmark Duration (yrs)	4.35
Current Yield (%)	6.98
Market Weighted Yield (%)	6.87
Average Coupon (%)	7.73
Effective Maturity (yrs)	6.09
Average Quality	BA-

For questions regarding
the PIMCO Funds:
Global Investors Series plc,
please call +44 (0) 20 7408 8955

Visit our Website for
a full menu of products
and services at
www.europe.pimco-funds.com

A company of **Allianz**
Global Investors

Global High Yield Bond Fund**PERFORMANCE - NET OF FEES**

PIMCO Fund - Accum (%)	—	7.02	21.28	6.21	1.18	3.95	3.61	-19.81	34.57	7.80
PIMCO Fund - Income (%)	6.43	6.93	21.39	6.29	1.20	3.99	3.59	-20.06	34.57	7.93
Benchmark (%)	7.83	8.33	21.56	6.70	1.57	3.56	2.69	-24.10	50.24	8.44

The benchmark is BofA Merrill Lynch Global High Yield, BB-B Rated, Constrained Index. All periods longer than one year are annualised.

MARKET COMMENTARY

- High yield bonds managed to post their best month of performance in July since last September, amid a very strong second quarter earnings period
- Market volatility fell materially, given improved clarity around financial regulatory reform, the gulf oil spill, and the European bank stress tests, serving as a boon for riskier assets
- The final three weeks of the month saw \$3 billion in inflows, representing the strongest stretch of inflows since 2003, bringing YTD flows well back into positive territory

PORTFOLIO RECAP

- The Fund outperformed its benchmark for the month
- Contributors to portfolio performance included:
 - An overweight to the finance sector, where insurance companies led the broader rally
 - Underweight building products, where materials and construction bonds lagged
 - Security selection in the utility sector, as middle-to-upper quality tiers outperformed
- Detractors from portfolio performance included:
 - Emphasis on high grade issues within finance as lower quality bonds outperformed
 - An underweight to real estate, as real estate development issues posted strong gains
 - Exposure to triple-Bs, which underperformed high yield bonds amid riskier appetites

MARKET OUTLOOK AND STRATEGY

- Technicals will likely continue to come under pressure from broader macroeconomic events, but in general should remain supportive of the high yield market
- Fundamentals should continue to improve as issuers benefit from stronger earnings, improved balance sheets, and having pushed out debt maturities
- While valuations have improved, following material spread widening linked to exogenous events and concerns over growth relapse, security selection will still be key to finding value

Credit Strategies

Diversified Income	Euro Credit	Global High Yield Bond
Global Investment Grade Credit	High Yield Bond	UK Corporate Bond
UK Long Term Corporate Bond		

MANAGER

PIMCO Global Advisors (Ireland) Limited

INVESTMENT ADVISOR

Pacific Investment Management Company LLC

CONTACT:

PIMCO Europe Ltd

(Registered in England and Wales, Company No. 2604517)

Registered Office

Nations House, 103 Wigmore Street

London, W1U 1QS, England

Tel: +44 (0) 20 7408 8955

GISFundSupport@pimco.com

PIMCO Asia Pte Ltd

501 Orchard Road #08-03, Wheelock Place

Singapore 238880

Tel: +65 6491 8000

AsiaFunds@pimco.com

Pacific Investment Management Company LLC

840 Newport Center Drive

Newport Beach, CA 92660

Tel: + 1 (949) 720 4706

GISFundSupport@pimco.com

ABOUT THE BENCHMARK

BofA Merrill Lynch Global High Yield BB-B Rated Constrained Index tracks the performance of below investment grade bonds of corporate issuers domiciled in countries having an investment grade foreign currency long term debt rating (based on a composite of Moody's, S&P, and Fitch). The Index includes bonds denominated in U.S. dollars, Canadian dollars, sterling, euro (or euro legacy currency), but excludes all multicurrency denominated bonds. Bonds must be rated below investment grade but at least B3 based on a composite of Moody's, S&P, and Fitch. Qualifying bonds are capitalization-weighted provided the total allocation to an individual issuer (defined by Bloomberg tickers) does not exceed 2%. Issuers that exceed the limit are reduced to 2% and the face value of each of their bonds is adjusted on a pro-rata basis. Similarly, the face value of bonds of all other issuers that fall below the 2% cap are increased on a pro-rata basis. It is not possible to invest directly in an unmanaged index. Prior to September 25th, 2009, the BofA Merrill Lynch Indices were known as the Merrill Lynch Indices.

TOP 5 INDUSTRIES (%)

	MARKET VALUE WEIGHTED	
	PIMCO Fund	Variance to Benchmark
Non-Captive Consumer Finance	8	3
Healthcare	7	2
Media Cable	6	1
Electric Utility	6	2
Banks	6	0

REGIONAL ALLOCATION (%)

	DURATION WEIGHTED	
	PIMCO Fund	Variance to Benchmark
North America	83	6
EMU	13	1
United Kingdom	3	0
Europe - Non-EMU	0	0
Japan	0	0
Asia Pacific ex-Japan	0	0
Emerging Markets	1	-5
Other/Net Cash	0	-2

QUALITY (%)

	MARKET VALUE WEIGHTED	
	PIMCO Fund	Variance to Benchmark
A1/P1	0	0
Below A1/P1	0	0
AAA	3	3
AA	1	1
A	5	5
BAA	9	9
BA	41	-14
B	37	-8
Below B	4	4

SECTOR DIVERSIFICATION (%)

	MARKET VALUE WEIGHTED	
	PIMCO Fund	Variance to Benchmark
Gov't Related	0	0
Mortgage	2	2
Invest. Grade Credit	11	11
High Yield Credit	80	-13
Emerging Markets	2	-5
Other	0	0
Net Cash Equivalents	5	5
Commercial Paper/STIF	0	
ST Gov't Related	0	
ST Mortgage	0	
ST Credit	2	
Money Mkt Fut/Opt	0	
Other	12	
Less: Liabilities	-9	
Total	100	

Gov't Related may include nominal and inflation-protected Treasuries, agencies, interest rate swaps, Treasury futures and options, FDIC-guaranteed and government-guaranteed corporate securities.

ABOUT PIMCO

PIMCO, founded in 1971, is a global investment solutions provider managing retirement and other assets for more than 8 million people in the U.S. and millions more around the world. Our clients include state, local and union pension and retirement plans whose beneficiaries come from all walks of life, including educators, healthcare workers and public safety employees. We also serve individual investors, working in partnership with financial intermediaries such as Registered Investment Advisors, broker/dealers, trust banks and insurance companies. We are advisors and asset managers to central banks, corporations, universities, foundations and endowments. PIMCO has offices in North America, Europe, Asia and Australia and is owned by Allianz Global Investors, a subsidiary of the Munich-based Allianz Group, a leading global insurance company.

PIMCO Asia Limited is licensed pursuant to the Securities and Futures Ordinance in Hong Kong. PIMCO Europe Ltd (Company No. 2604517), PIMCO Europe Ltd. Munich Branch (Company No. 157591) and PIMCO Europe Ltd. Amsterdam Branch (Company No. 24319743) are authorized and regulated by the Financial Services Authority (25 The North Colonnade, Canary Wharf, London E14 5HS) in the UK. PIMCO Europe Ltd. Munich Branch is additionally regulated by the BaFin in Germany in accordance with Section 53b of the German Banking Act. PIMCO Europe Ltd. Amsterdam Branch is additionally regulated by the AFM in the Netherlands. PIMCO Asia Pte Ltd (Registration No. 199804652K) is regulated by the Monetary Authority of Singapore. PIMCO Australia Pty Ltd, AFSL 246862 and ABN 54084280508, offers services to wholesale clients as defined in the Corporations Act 2001. PIMCO Japan Ltd, Financial Instruments Business Registration Number: Director of Kanto Local Finance Bureau (Financial Instruments Firm) No.382. Member of Japan Securities Investment Advisers Association and Investment Trusts Association. Investment management products and services offered by PIMCO Japan Ltd are offered only to persons within its respective jurisdiction, and are not available to persons where provision of such products or services is unauthorized. PIMCO Canada Corp provides services only to accredited investors within certain provinces or territories in accordance with applicable law. **Past performance is not a guarantee or a reliable indicator of future results.** Performance data shown is after the effect of fees. The value of shares can go up as well as down. The Fund can invest a portion of its assets in non-Euro securities, which can entail greater risks due to non-Euro economic and political developments. This risk may be enhanced when investing in Emerging Markets. Investment in a Fund that invests in high-yield, lower-rated securities, will generally involve greater volatility and risk to principal than investments in higher-rated securities. This Fund may use derivative instruments for hedging purposes or as part of its investment strategy. Use of these instruments may involve certain costs and risks. Portfolios investing in derivatives could lose more than the principal amount invested. PIMCO provides services to qualified institutions and investors who fall within the category of professional client as defined in the FSA's Handbook. Retail investors wishing to purchase PIMCO Funds shares should do so via their financial intermediary. This report is not a public offer. This information is not for use within any country or with respect to any person(s) where such use could constitute a violation of the applicable law. PIMCO Funds: Global Investors Series plc is an umbrella type open-ended investment company with variable capital and with segregated liability between Funds incorporated with limited liability under the laws of Ireland with registered number 276928. This communication must be accompanied or preceded by a PIMCO Funds: Global Investors Series plc prospectus. Copyright 2010, PIMCO.